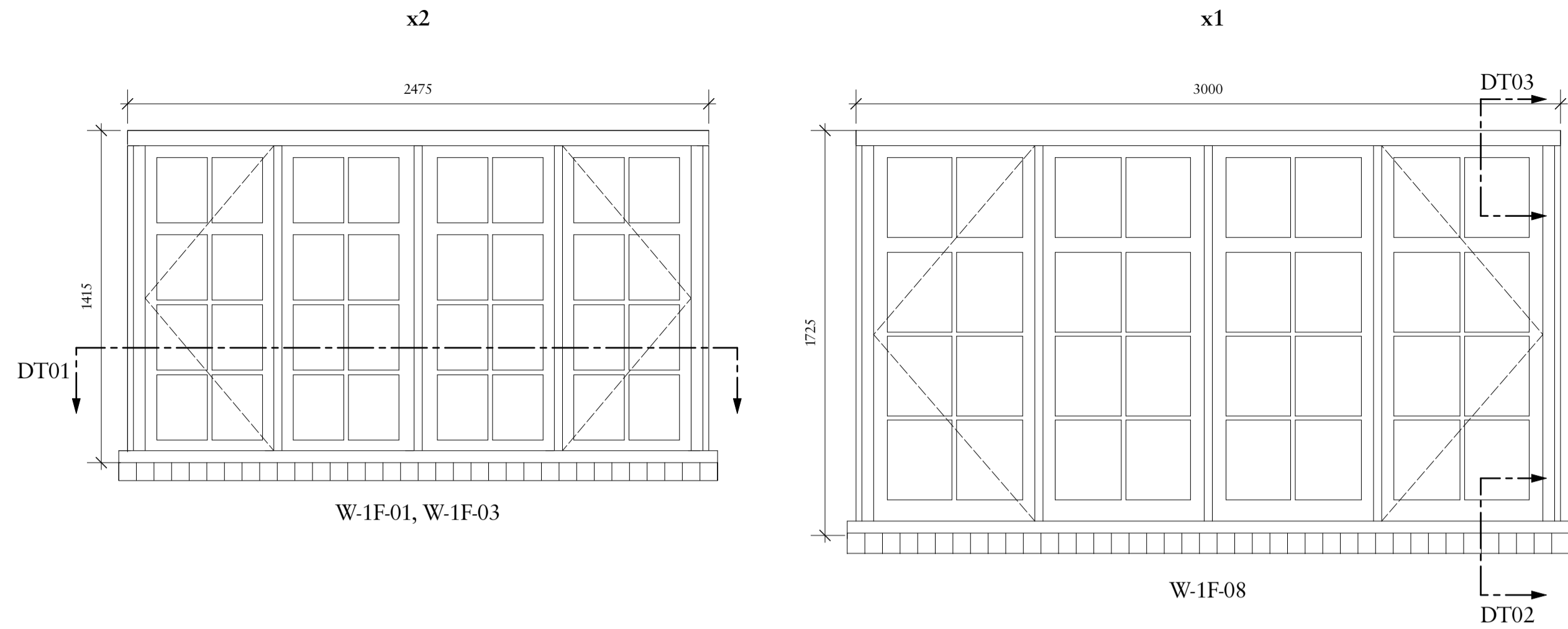


Important note

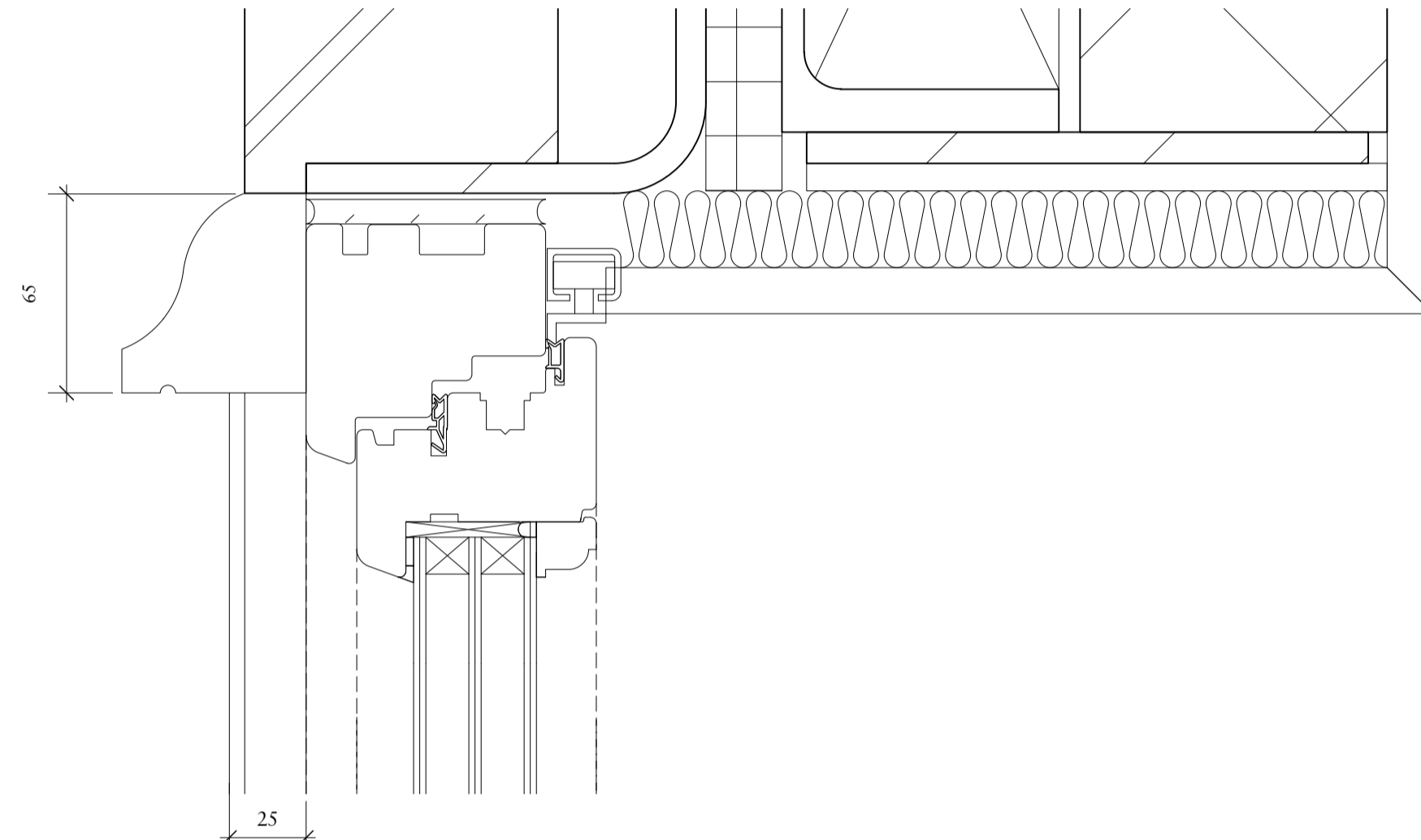
All dimensions in millimetres. Where dimensions are not given, drawings must not be scaled and the matter referred back to Charlton Brown Architects.

All dimensions and conditions are to be checked on site by the contractor prior to preparing drawings or commencing any work. The contractor is responsible for checking that there is no conflict between site dimensions and drawn dimensions.

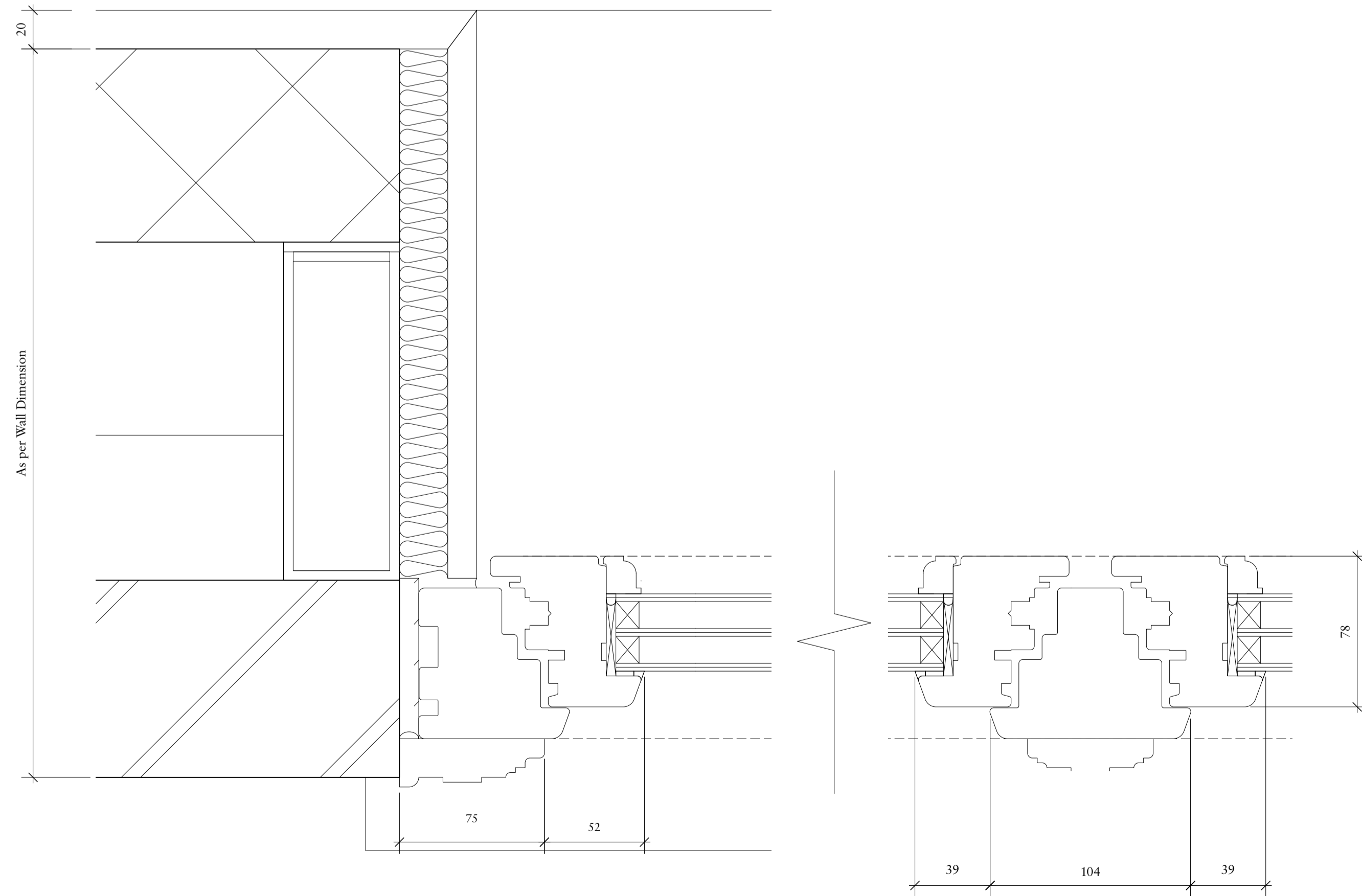
In the event of any detail or dimensional conflict between Charlton Brown Architects drawings, the matter must be referred back to Charlton Brown Architects for clarification



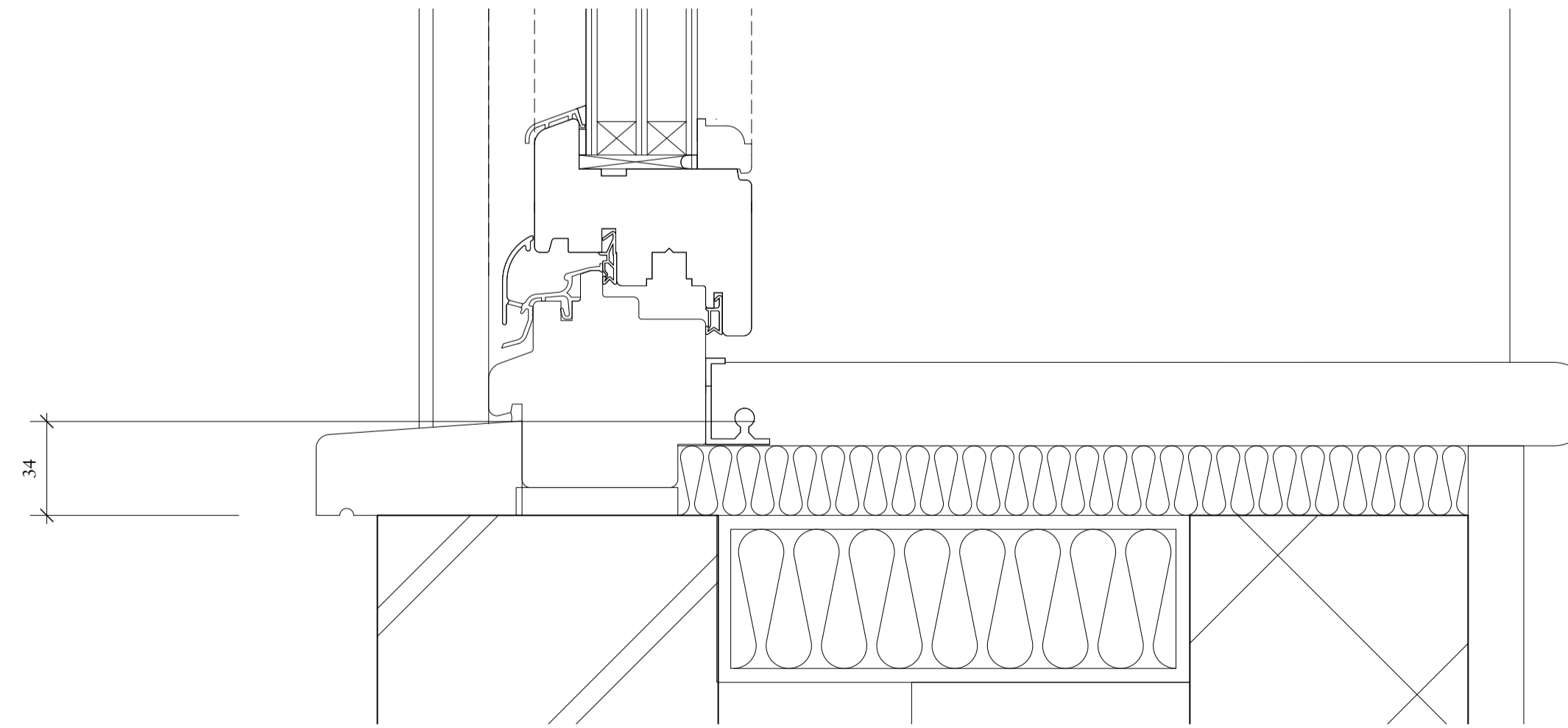
Window Type	W-T02
Window Description	Triple glazed inward opening hardwood timber casement windows
Window Numbers	W-1F-01, W-1F-03, W-1F-08
Structural Opening	See drawing
Leaf Size	N/A
Finish	Hardwood timber painted white, clear lacquer seal
Ironmongery Set	Recessed Espagnolette Bolt and hidden stays
Glass Specification	1.6 W/(msq.K)



3 Detail 03 - Section
Scale: Half Actual Size



1 Detail 01 - Plan
Scale: Half Actual Size



2 Detail 02 - Section
Scale: Half Actual Size

A	28/06/2023	Planning update	
Rev	Date	Details	By

**Charlton Brown
Architecture & Interiors**

The Belvedere, 2 Back Lane, Hampstead, London, NW3 1HL
 Telephone +44(0)20 7794 1234
 Email office@charltonbrown.com
 Website www.charltonbrown.com

Client
Mr Alex Begun

Project
38 Frognal Lane

Drawing Title
Window Type 02 - Details 1:2

Date	Drawn	Checked
28/06/2023	AN	SC

Scale
 1:2 1:20

Issue Status
For Planning

Project Number	Drawing Number	Revision
20022	T-31-111	A