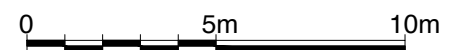
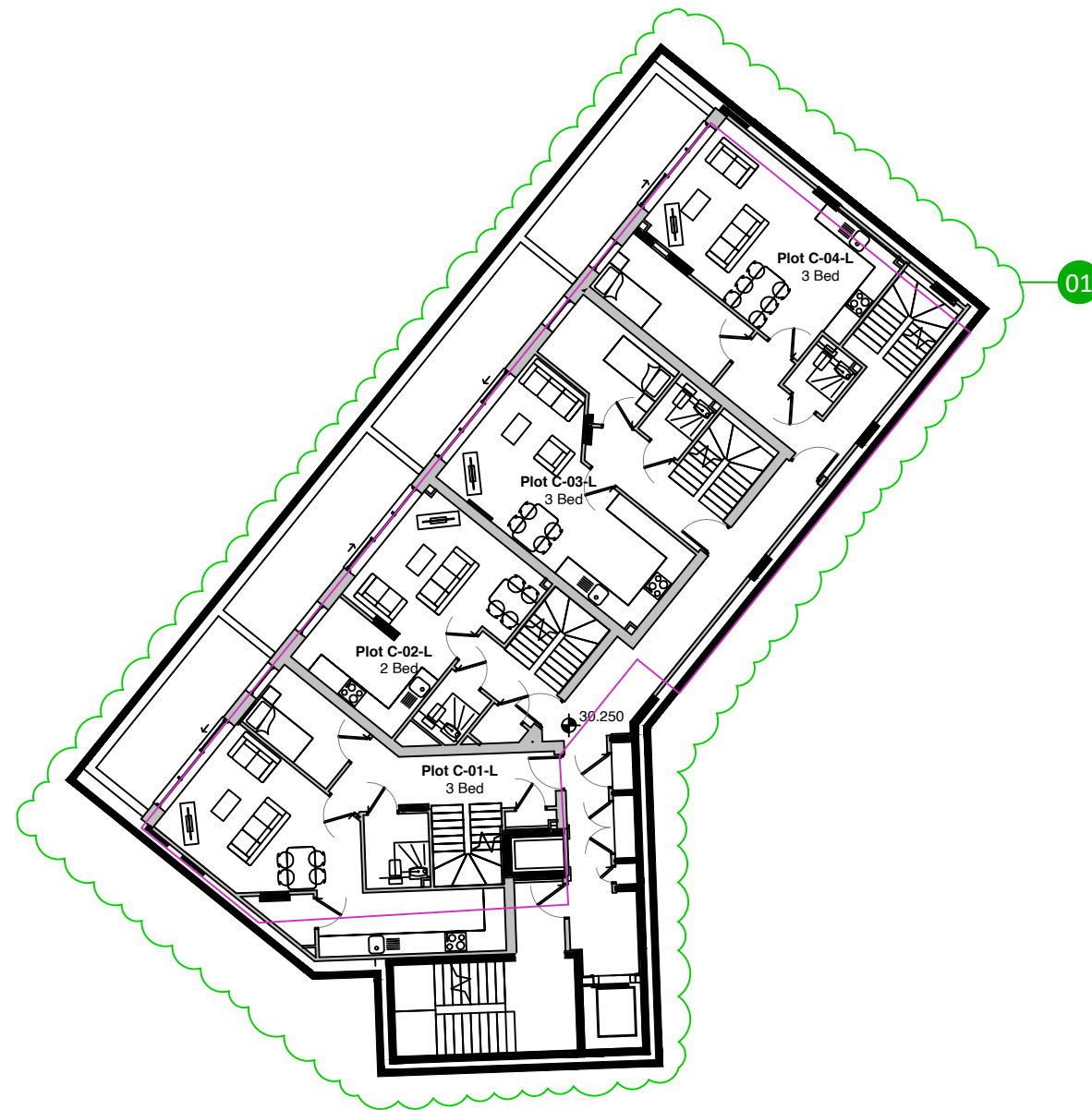


KEY

- Line of planning scheme external wall
- 1. Living Accommodation moved to Lower Ground Floor level.
 Reason - To benefit and have direct access to terraces. Upper ground floor was also too small to fit the furniture in.



P5	General Amendments	23-02-2023	PH PD
P4	General Amendments	29-11-2022	PH PD
P3	General Amendments	17-11-2022	PH PD
P2	Planning Issue	01-11-2022	PD PD
P1	Stage 3 Issue	09-09-2022	PD SP
Rev	Comments	Date	Dr Ch



©Piper Whitlock Architecture Ltd.
 2nd Floor, Anglo St. James House, 39a Southgate Street, Winchester, Hampshire, SO23 9EH
 Tel: 01962 843586, Email: enquiries@piperwhitlock.co.uk, www.piperwhitlock.co.uk

Project Name:
**Haverstock Hill,
 Camden**

Client:
OB Camden Hotel Ltd

Drawing Title:
**Planning Comparison
 Lower Ground Floor Plan**

Project Ref: Orig: Zone: Lev: Type: Role: Num: Rev:
HHCAM - PWA- 00-00 -DR- A-0109- P5

Status: Stage: Scale @ A3:
FOR INFORMATION 3 1:200