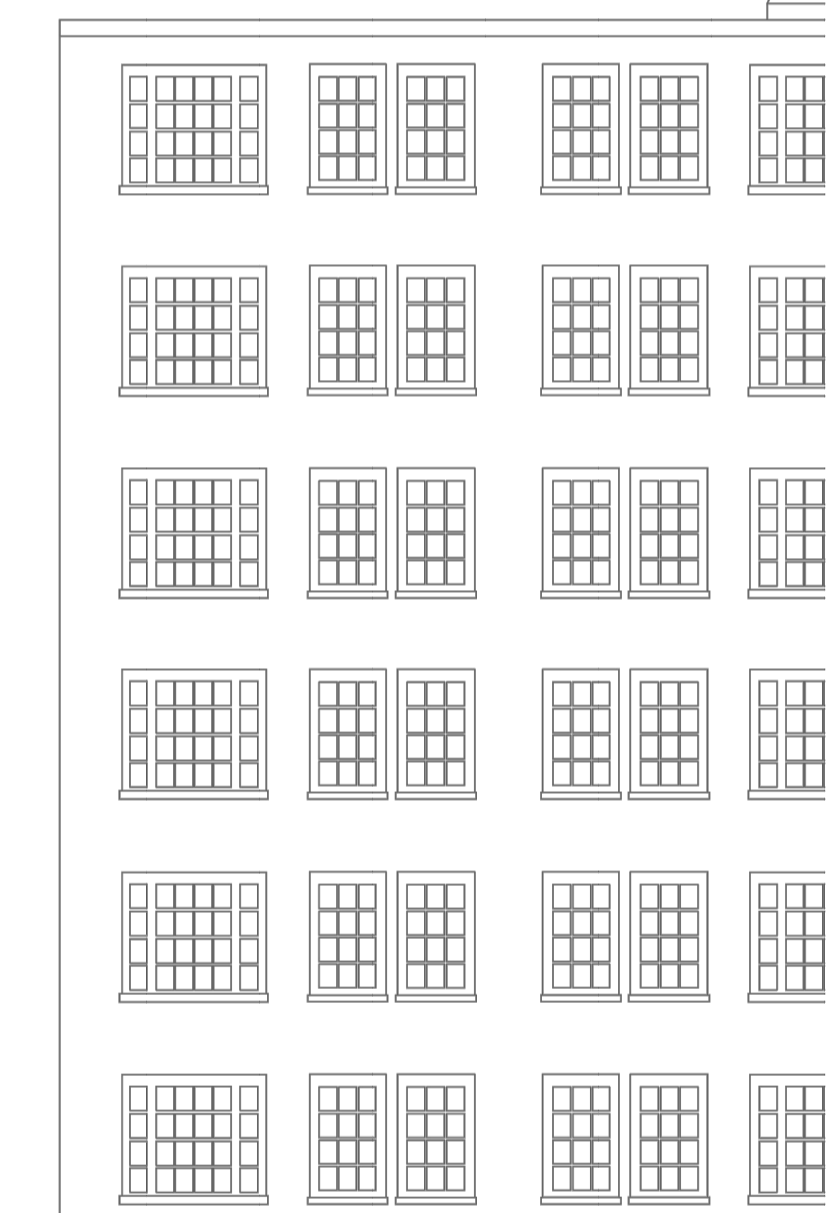


KEY AMENDMENTS

- Balcony set back from curved windows which allows clear views in and out, unobscured by balcony railings.
- Balcony width increased to improve the amenity and outlook.
- Balcony and window arrangement amended to match the architectural language at the corner on Adelaide Road. Balcony improved, corner balcony post removed, enhanced internal apartment space to the corner. Windows added to 5th and 6th floor to provide access to the balcony and allow light into the space. Ground floor window moved around the corner for more privacy.
- External covered space removed and incorporated into the apartment.



Rev	Comments	Date	Dr	Ch
G1	Planning Issue	06-12-2022	SP	PD
G2	Planning Issue	23-01-2023	SP	PD
G3	Planning Issue	22-02-2023	SP	PD
G4	Planning Issue	29-06-2023	SP	PD

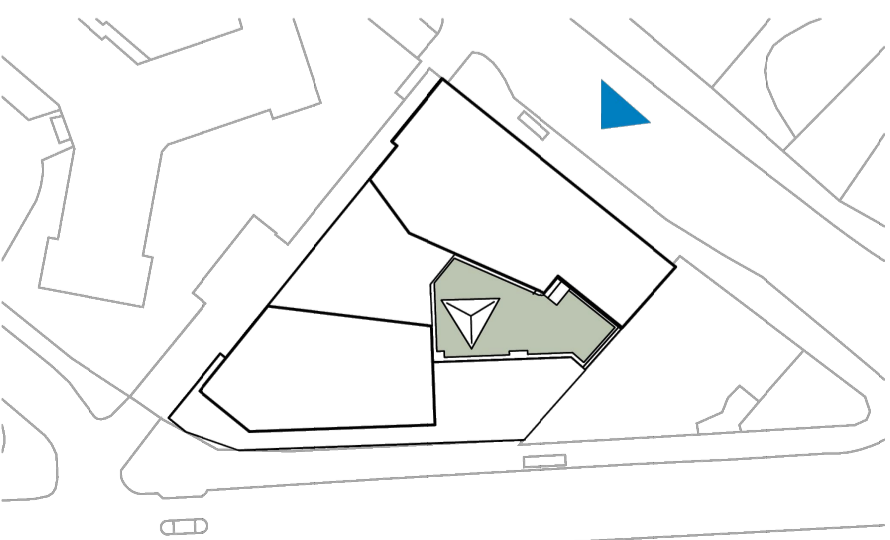
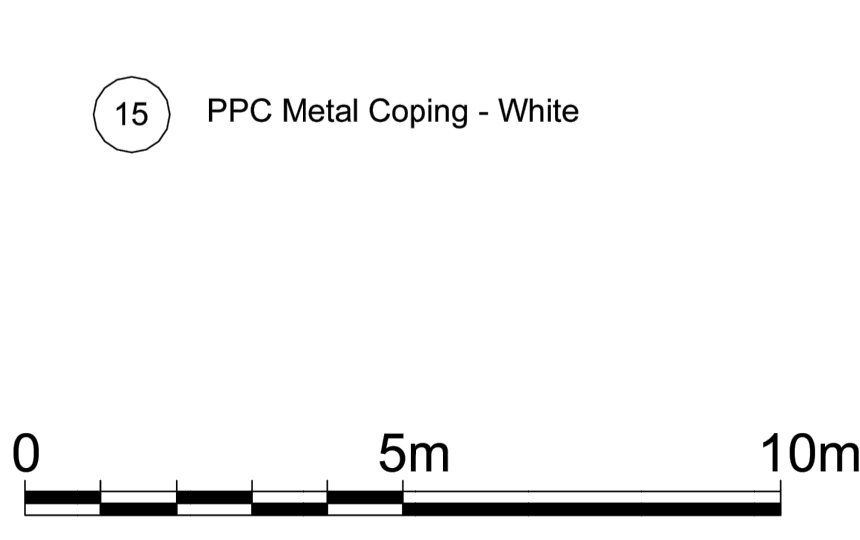
NOTE: This drawing is generated from a federated Revit model, as such the Structural, Landscape and MSE elements shown were not modelled by Piper Whitlock Architecture (PWA). PWA do not take any responsibility for the design of the other consultant information shown in PWA's drawing and all such information should be sourced/integrated from drawings/ models provided by the companies responsible for their creation.

NOTE: Use annotated dimensions only. All dimensions in millimeters unless otherwise stated. This drawing is to be read in conjunction with all other related material. Any discrepancies, conflicts or errors must be reported to Piper Whitlock Architecture before commencing work.

PWA Code: 22014

Materials Key:

01 Facing Brickwork	06 PPC Railings
02 Stone - Banding/Surrounds/Coping	07 Clear Glass
03 White Brick	08 Satin Glass
04 PPC Frames	09 Louvered Plant Screen
05 PPC Louvres	14 PPC Metal Coping - Bronze



Drawing Title:
Proposed North East Elevation (HH)

Client:
OD Camden Hotel Ltd

Project Ref: Orig: Zone: Lev: Type: Role: Num: Rev:
 HHCAM -PWA-00 - ZZ -DR-A-0221 -G4

Status: **PLANNING** Stage: 4 Scale @ A3: 1:200

Project Name:
Haverstock Hill, Camden

PW PIPER WHITLOCK

© Piper Whitlock Architecture Ltd.
 2nd Floor, Anglo St. James House, 39a Southgate Street, Winchester, Hampshire SO23 9EH
 Tel: 01962 843586, Email: enquiries@piperwhitlock.co.uk, www.piperwhitlock.co.uk