

Fascia - Plasterboard finish applied to the fascia of the staircase opening.

Balustrade - 50x12mm flat bar steel sprayed on site in semi-gloss black finish.

Half-landing balustrade - 2mm mild steel sheet sprayed on site in semi-gloss black finish.

Handrail - flat bar steel sprayed on site in semi-gloss black finish.

Torrington Place

New balustrading with full height elements.

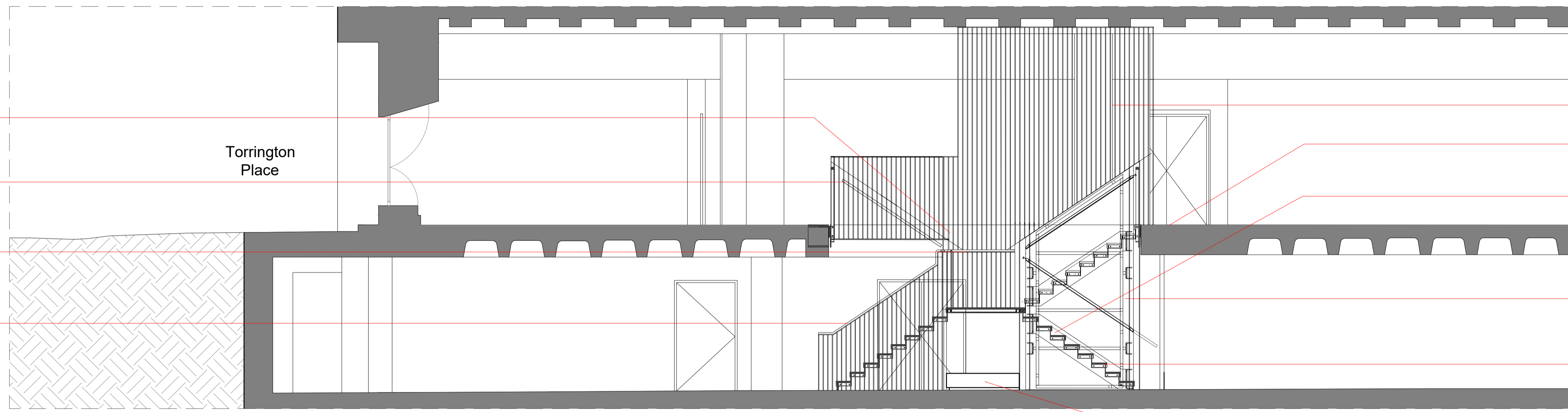
Flooring in surrounding area to be made good and to match floor finish previously consented.

Stair treads - Oak timber treads with clear lacquer finish fixed to solid steel tread and riser plates.

Stair wall - 2mm flat panels connected to steel circular hollow sections sprayed on site in semi-gloss black finish.

New staircase with double flight access.

Cane protection plinth.



**1** Section AA  
1 : 50

Fascia - Plasterboard finish applied to the fascia of the staircase opening.

Stair wall - 2mm flat panels connected to steel circular hollow sections sprayed on site in semi-gloss black finish.

Flooring in surrounding area to be made good and to match floor finish previously consented.

Stair treads - Oak timber treads with clear lacquer finish fixed to solid steel tread and riser plates.

New staircase with double flight access.

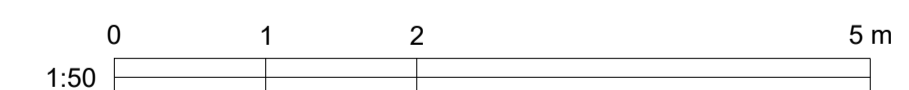
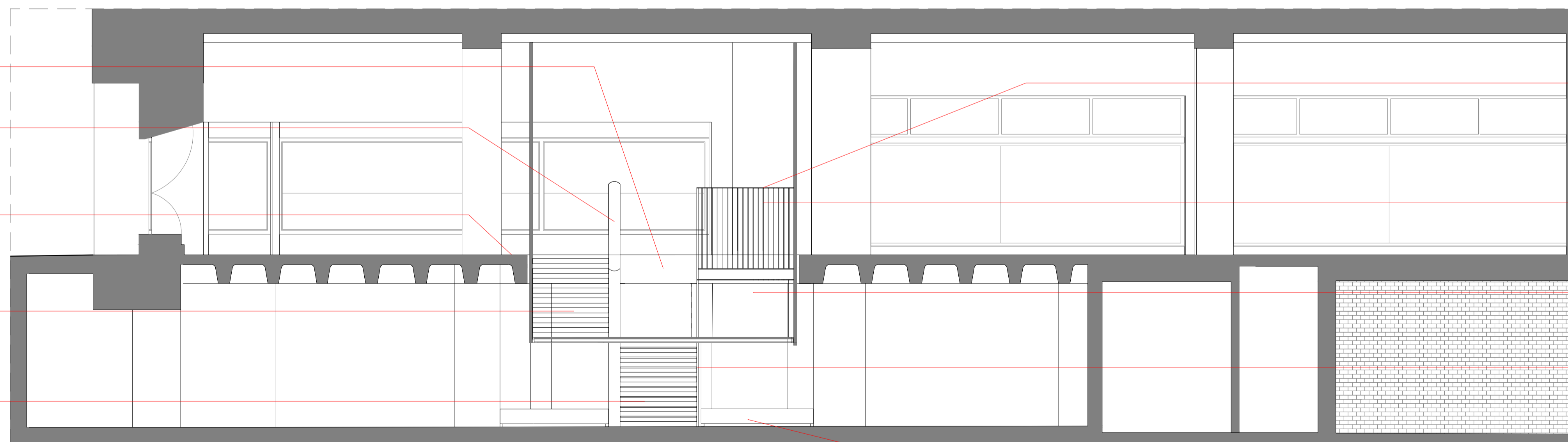
New balustrading with full height elements.

Balustrade - 50x12mm flat bar steel sprayed on site in semi-gloss black finish.

Half-landing balustrade - 2mm mild steel sheet sprayed on site in semi-gloss black finish.

Handrail - flat bar steel sprayed on site in semi-gloss black finish.

Cane protection plinth.



**2** Section BB  
1 : 50

KEY	REV	DATE	DESCRIPTION	NOTES	CLIENT: HEALS	NOTE	LOCATION	THE HEAL'S BUILDING 196 TOTTENHAM COURT LONDON W1T 7LQ	WHITE RED ARCHITECTS 45 Charlotte Road London EC2A 3PD TEL: 020 7859 4521 whitered.co.uk	
	01	23/01/2023	INITIAL ISSUE		PROJECT MANAGER & QS: COLLIER'S	1. Do not scale from this drawing. 2. All dimensions to be checked on site by the contractor and such dimensions to be their responsibility. 3. Report all drawings errors, omissions, and discrepancies to the architect. 4. This document may be issued in an uncontrolled CAD format to enable others to use it as background information to make alterations and/or additions. In that instance the file will be accompanied by a PDF version. It is for those making such alterations and additions to ensure that they make use of current background information. WRA Ltd Accepts no liability for any such alterations or additions to the background information or arising out of changes to background information which occur prior to alterations or additions being made.	NOT FOR CONSTRUCTION	The Heals Building - Tenant Works - New Staircase	PROJECT NAME: The Heals Building - Tenant Works - New Staircase	
	02	21/02/2023	PLANNING ISSUE	M.E.P ENGINEER: -						
	03	30/06/2023	UPDATED PLANNING ISSUE	STRUCTURAL ENGINEER: -						
				FIRE ENGINEER: -						
				PLANNING CONSULTANT: TURLEY						
				CDM CONSULTANT: -	DRAWN   CHECKED   SCALE @A1   STATUS					
					APPROVED INSPECTOR: -	SE   JJ   1:50   PLANNING				
						PROJECT NO.   ZONE   TYPE   SHEET NO.   REVISION				
						5455   -   -   PL_00_300   03				