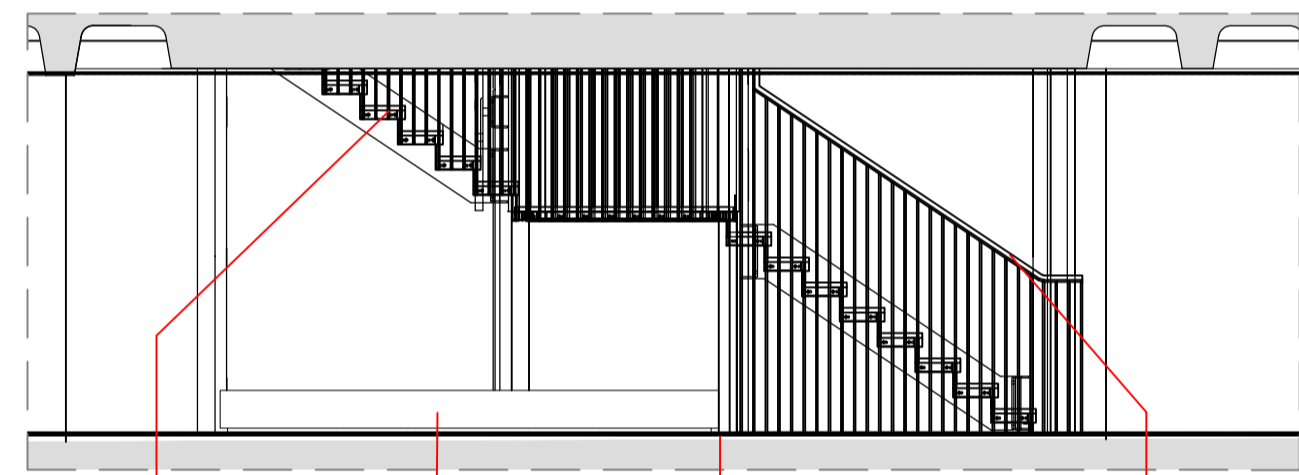
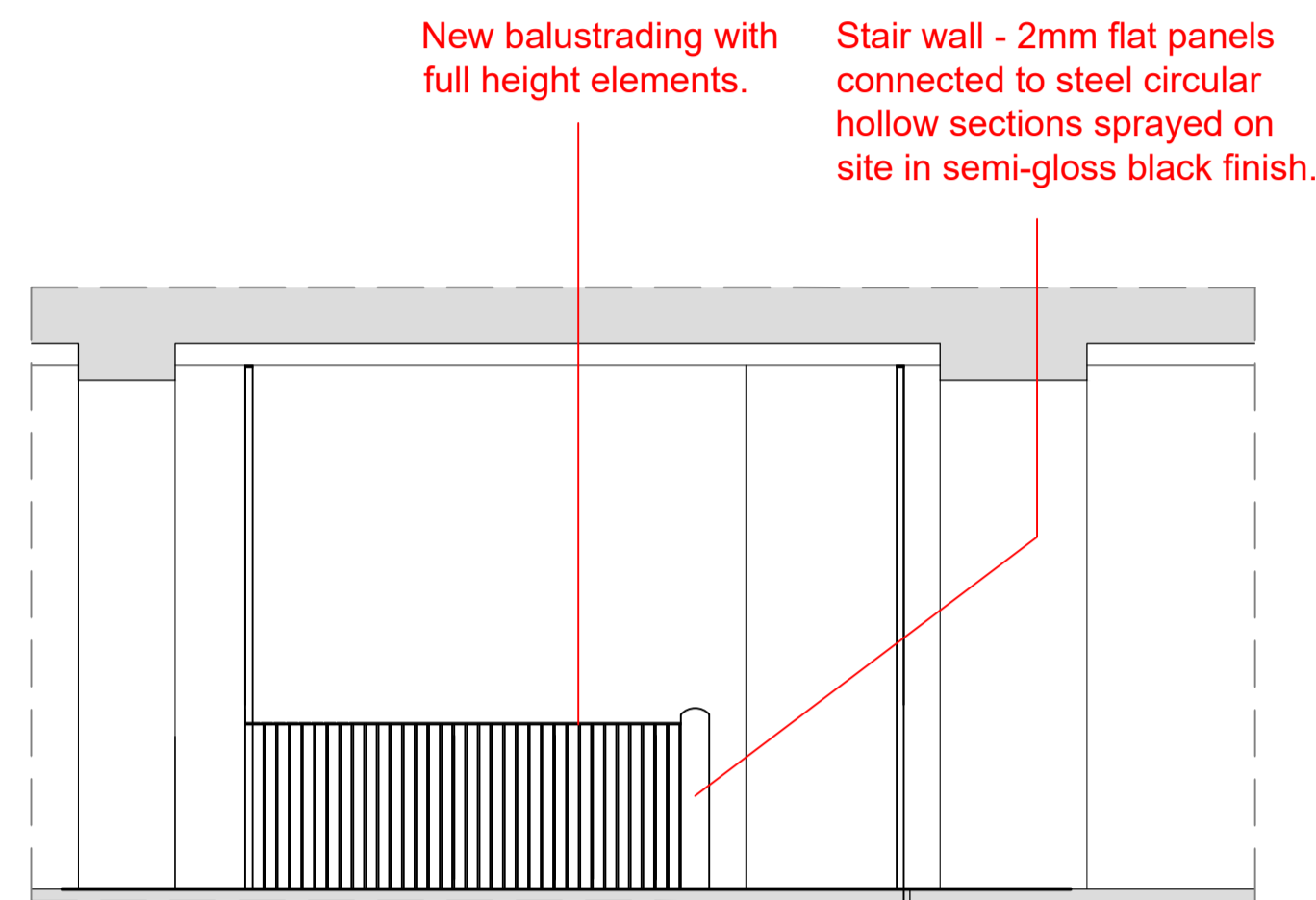


New balustrading with full height elements.  
Balustrade - 50x12mm flat bar steel sprayed on site in semi-gloss black finish.

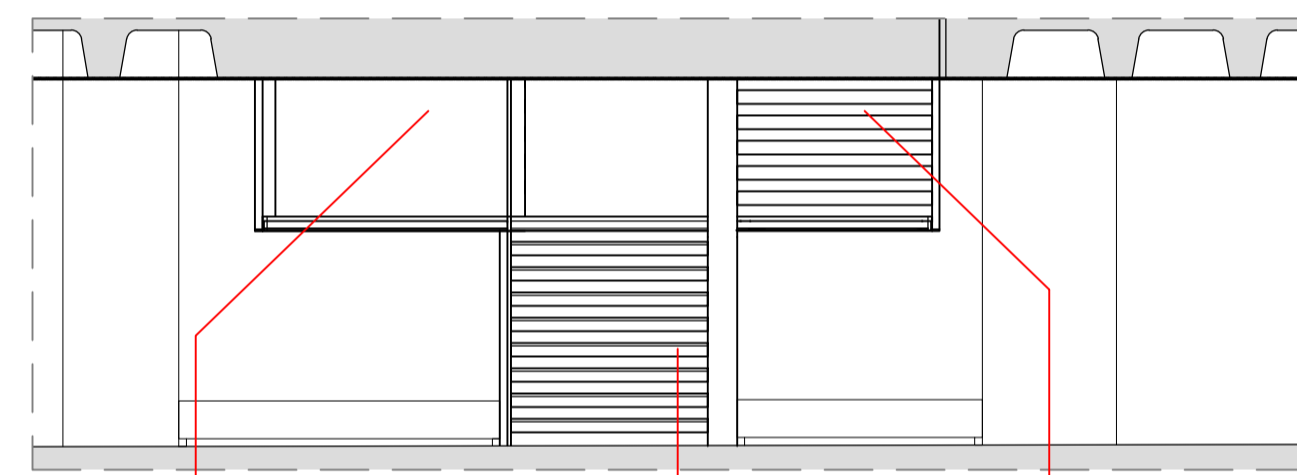


New staircase with double flight access.  
Cane protection plinth.  
Flooring in surrounding area to be made good and to match floor finish previously consented.  
Handrail - flat bar steel sprayed on site in semi-gloss black finish.

1 Elevation 1  
1 : 50

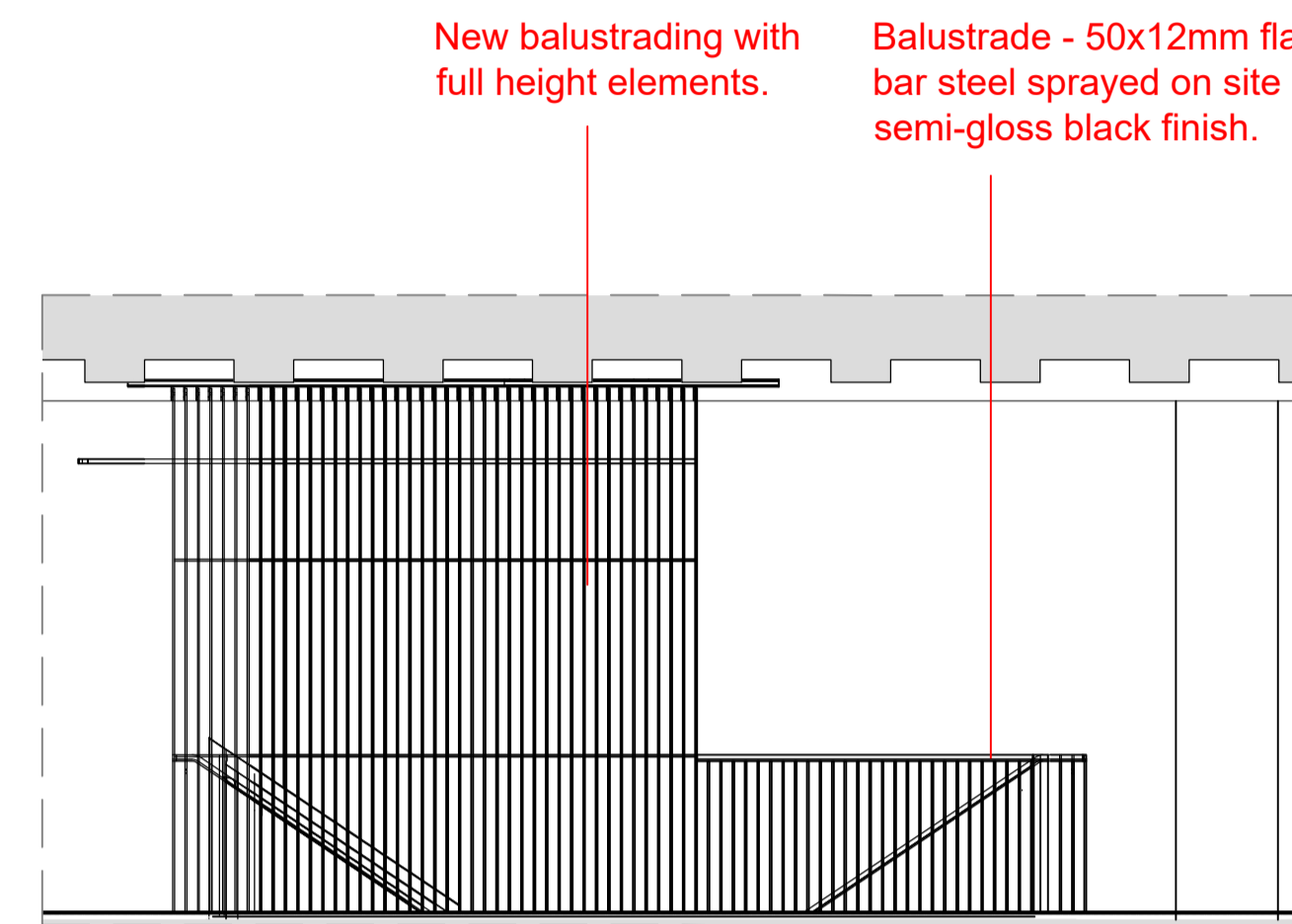


New balustrading with full height elements.  
Stair wall - 2mm flat panels connected to steel circular hollow sections sprayed on site in semi-gloss black finish.

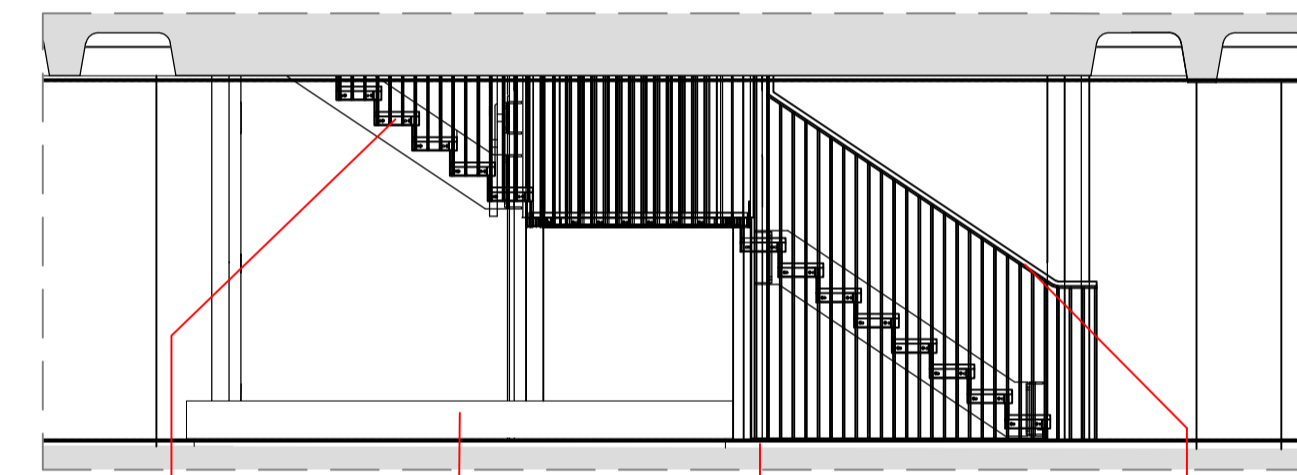


Half-landing balustrade - 2mm mild steel sheet sprayed on site in semi-gloss black finish.  
Stair treads - Oak timber treads with clear lacquer finish fixed to solid steel tread and riser plates.  
New staircase with double flight access.

2 Elevation 2  
1 : 50

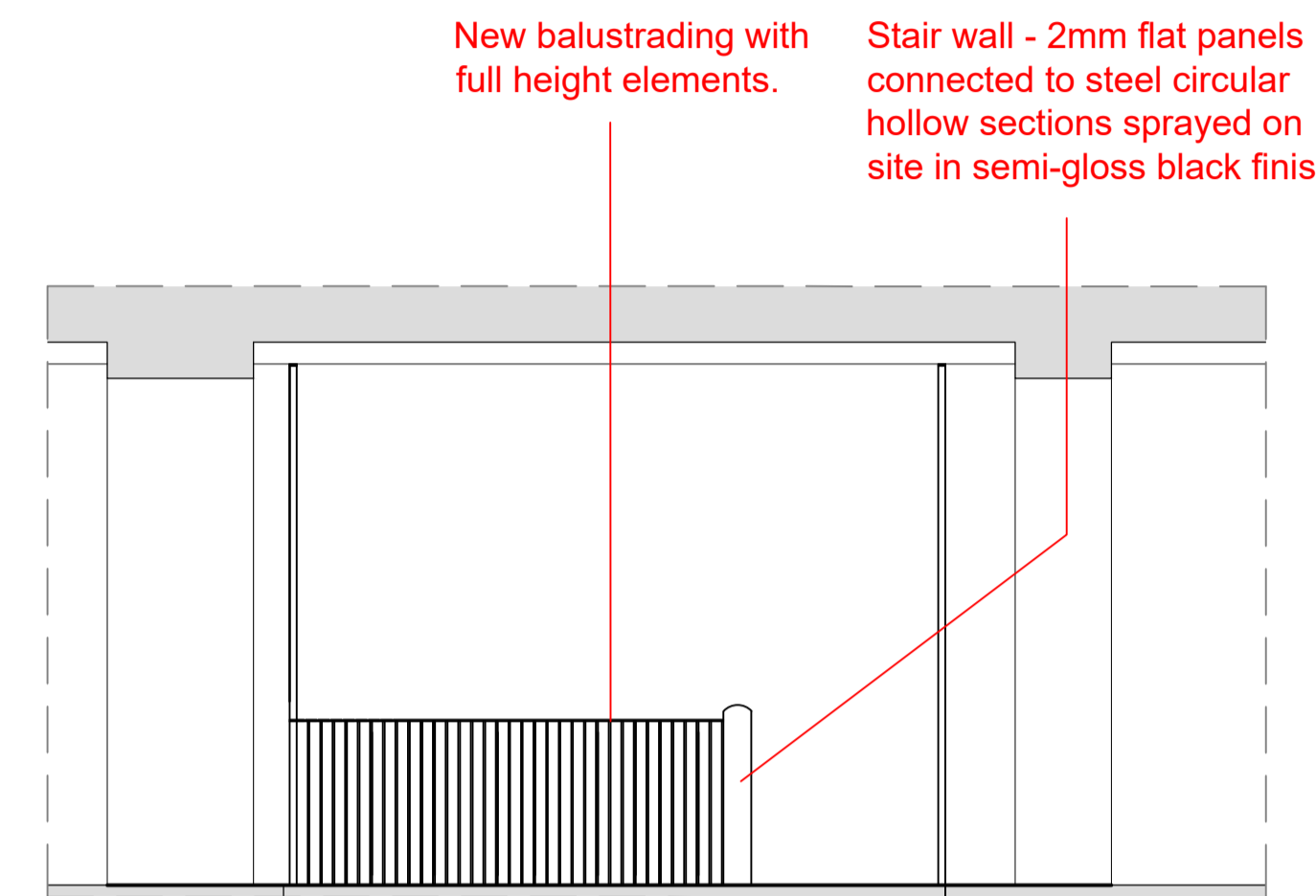


New balustrading with full height elements.  
Balustrade - 50x12mm flat bar steel sprayed on site in semi-gloss black finish.

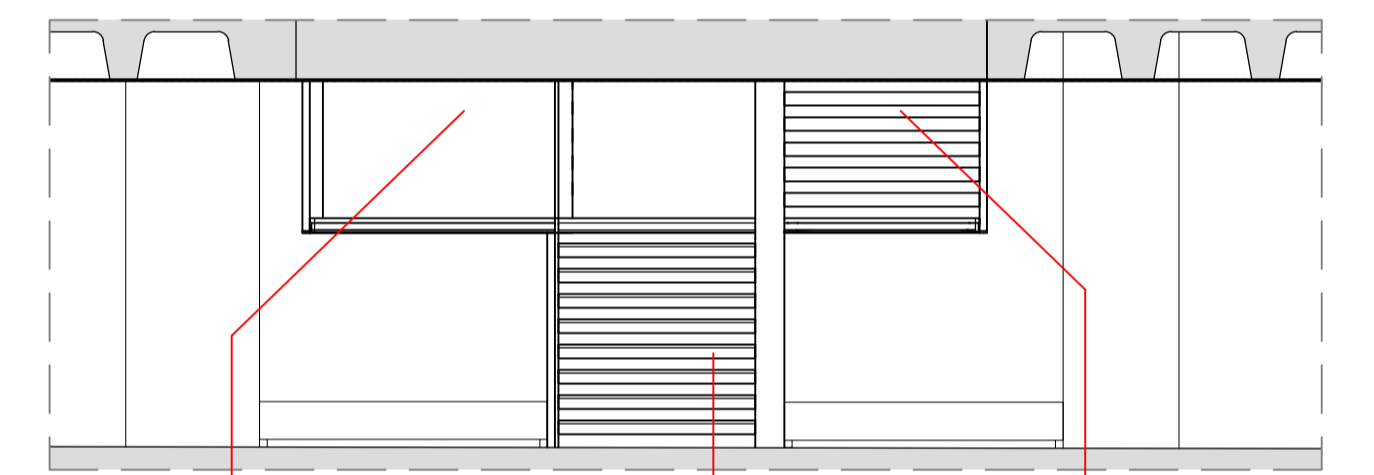


New staircase with double flight access.  
Cane protection plinth.  
Flooring in surrounding area to be made good and to match floor finish previously consented.  
Handrail - flat bar steel sprayed on site in semi-gloss black finish.

3 Elevation 3  
1 : 50

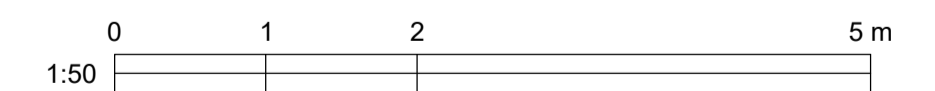


New balustrading with full height elements.  
Stair wall - 2mm flat panels connected to steel circular hollow sections sprayed on site in semi-gloss black finish.



Half-landing balustrade - 2mm mild steel sheet sprayed on site in semi-gloss black finish.  
Stair treads - Oak timber treads with clear lacquer finish fixed to solid steel tread and riser plates.  
New staircase with double flight access.

4 Elevation 4  
1 : 50



KEY	REV	DATE	DESCRIPTION	NOTES
	01	23/01/2023	INITIAL ISSUE	
	02	21/02/2023	PLANNING ISSUE	
	03	30/06/2023	UPDATED PLANNING ISSUE	

CLIENT: HEALS	NOTE 1. Do not scale form this drawing. 2. All dimensions to be checked on site by the contractor and such dimensions to be their responsibility. 3. Report all drawings errors, omissions, and discrepancies to the architect. 4. This document may be issued in an uncontrolled CAD format to enable others to use it as background information to make alterations and/or additions. In that instance the file will be accompanied by a PDF version. It is for those making such alterations and additions to ensure that they make use of current background information. WRA Ltd Accepts no liability for any such alterations or additions to the background information or arising out of changes to background information which occur prior to alterations or additions being made.
PROJECT MANAGER & QS: COLLIER'S	
M.E.P ENGINEER: -	
STRUCTURAL ENGINEER: -	
FIRE ENGINEER: -	
PLANNING CONSULTANT: TURLEY	
CDM CONSULTANT: -	
APPROVED INSPECTOR: -	

LOCATION	THE HEAL'S BUILDING 196 TOTTENHAM COURT LONDON W1T 7LQ			
PROJECT NAME:	The Heals Building - Tenant Works - New Staircase			
DRAWING TITLE:	Proposed - Elevations			
DRAWN	CHECKED	SCALE @A1	STATUS	
SE	JJ	1:50	PLANNING	
PROJECT NO.	ZONE	TYPE	SHEET NO.	REVISION
5455	-	-	PL_00_200	03

WHITE RED ARCHITECTS	45 Charlotte Road London EC2A 3PD	TEL: 020 7859 4521 whitered.co.uk		
PROJECT NAME:				
The Heals Building - Tenant Works - New Staircase				
DRAWING TITLE:				
Proposed - Elevations				
DRAWN	CHECKED	SCALE @A1	STATUS	
SE	JJ	1:50	PLANNING	
PROJECT NO.	ZONE	TYPE	SHEET NO.	REVISION
5455	-	-	PL_00_200	03

NOT FOR CONSTRUCTION