

KEY PLAN.

MATERIALS KEY - EXISTING.

MASONRY.

A1 TRADITIONAL LONDON STOCK BRICK - YELLOW.

EXISTING CLADDING / RENDER SYSTEMS.

B1 INSULATED RENDER SYSTEM - WHITE.

B2 INSULATED RENDER SYSTEM - GREY.

B3 INSULATED RENDER SYSTEM - SAND.

B4 SW TIMBER CLADDING BOARDS.

B5 SPANDREL PANELS.

MISCELLANEOUS.

C1 PRESSED ALUMINIUM PARAPET CAPPINGS.

| Rev | Date | Description | By | Chk |
|-----|------|-------------|----|-----|
|-----|------|-------------|----|-----|



**AXIOM
ARCHITECTS**

1 Brooklands Yard Southover High Street Lewes East Sussex BN7 1HU
Tel. 01273 479434 www.axiomarchitects.co.uk

Client

M.CLARKE.

Project

UNITE STUDENTS - BEAUMONT COURT
1-45 COLLEGE GROVE NW
LONDON, NW1 0RW.

Drawing

EXISTING ELEVATIONS.

External wall finishes - SHEET 2 of 2.

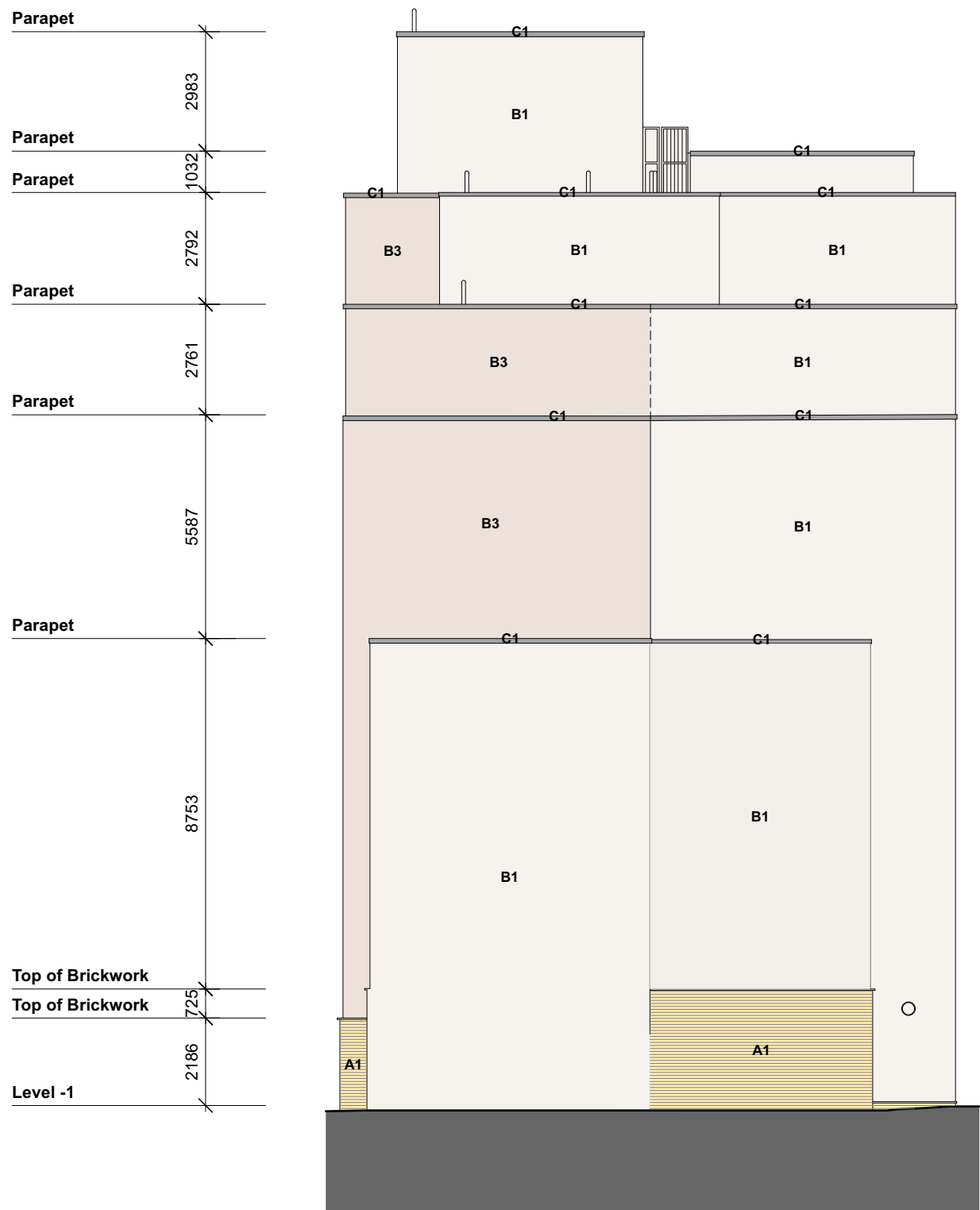
| Scale | Status | Date | Drawn | Checked |
|-------------|----------|----------|-------|---------|
| 1:150 @ A1 | PLANNING | 30.6.23 | lap | |
| Drawing No. | | Revision | | |

5977-P101



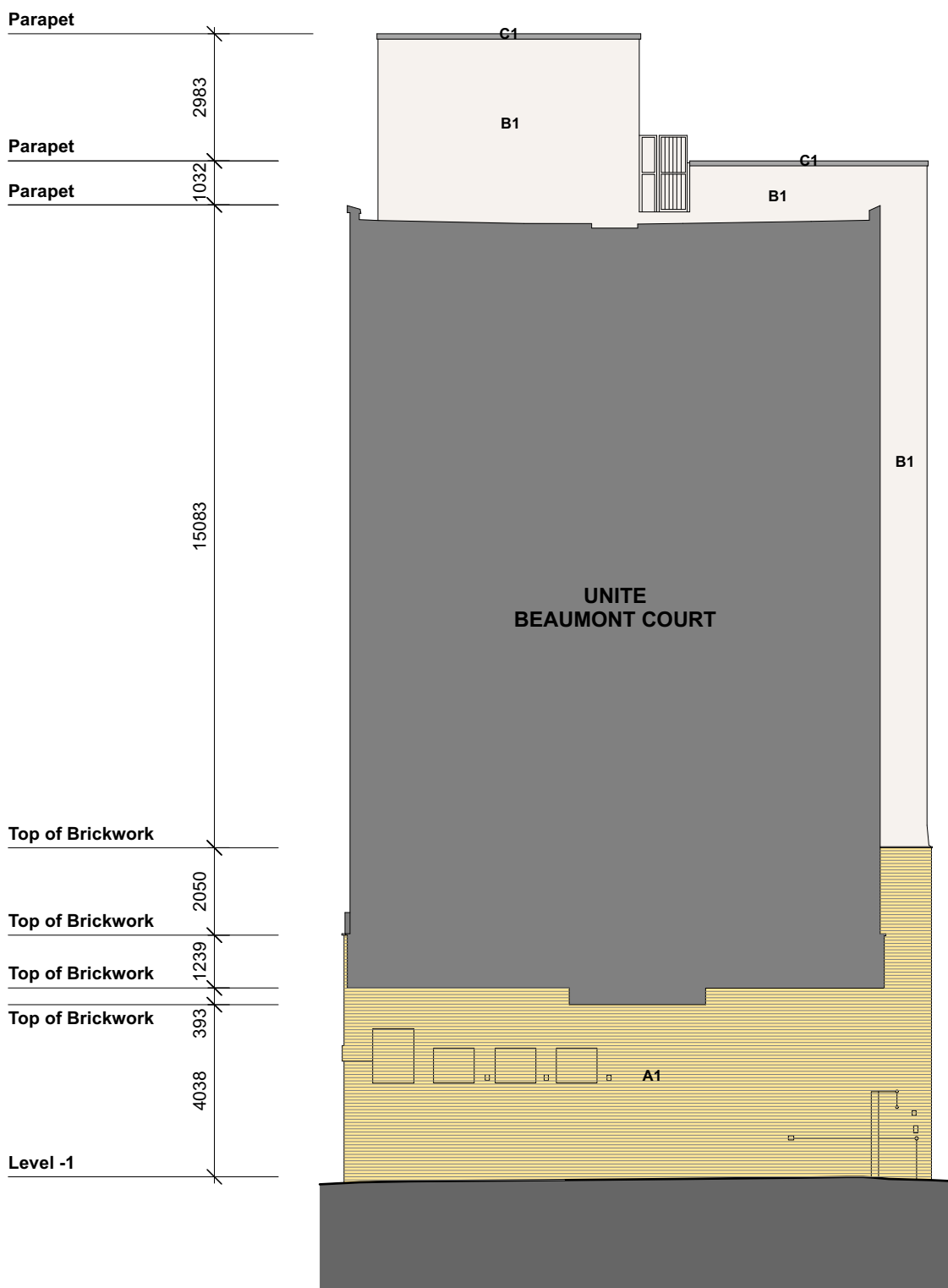
Datum - 15.00m

5 - North East Elevations.



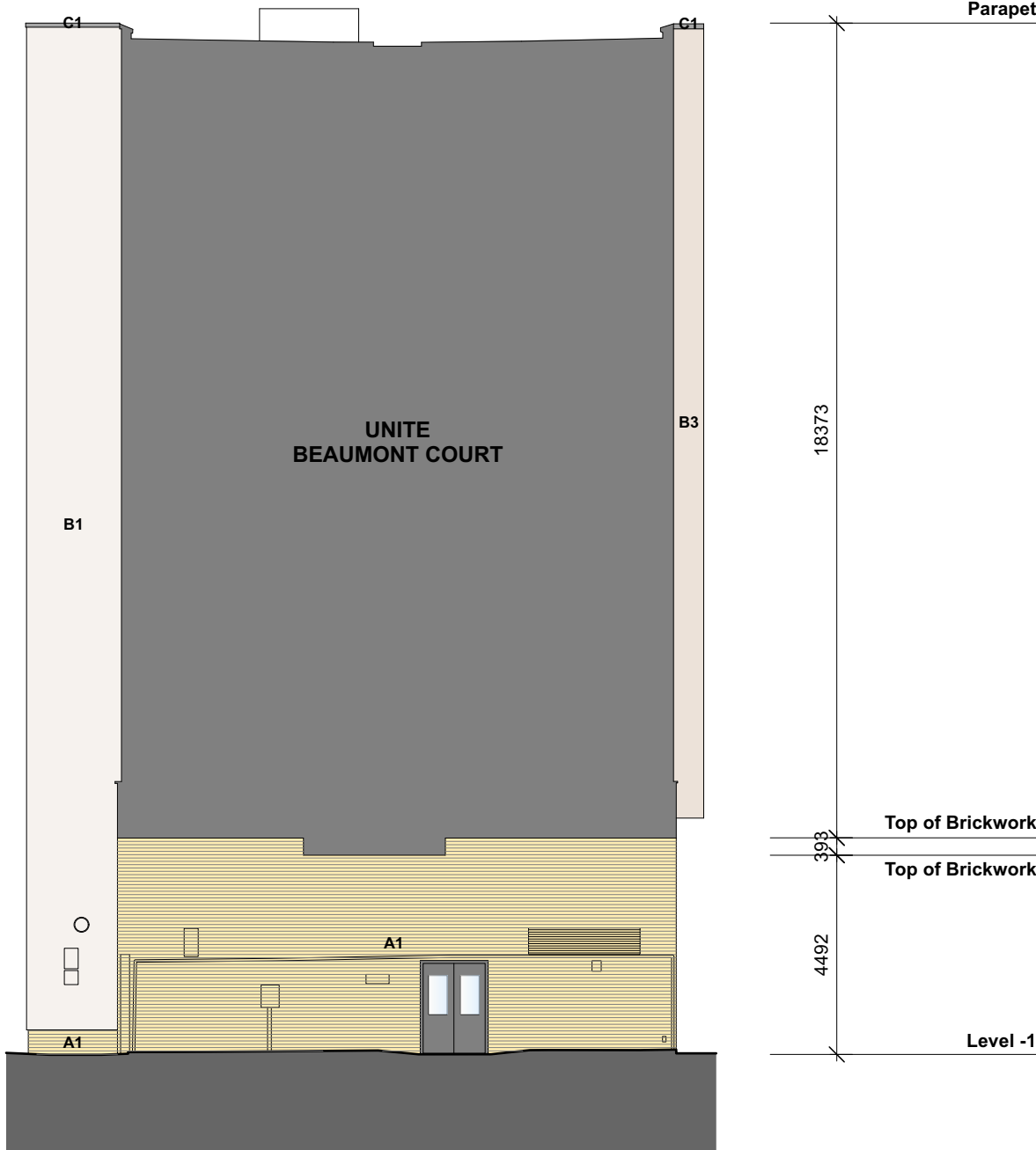
Datum - 15.00m

6 - South West Elevations.



Datum - 15.00m

7 - South West Elevations.



Datum - 15.00m

8 - North East Elevations.