

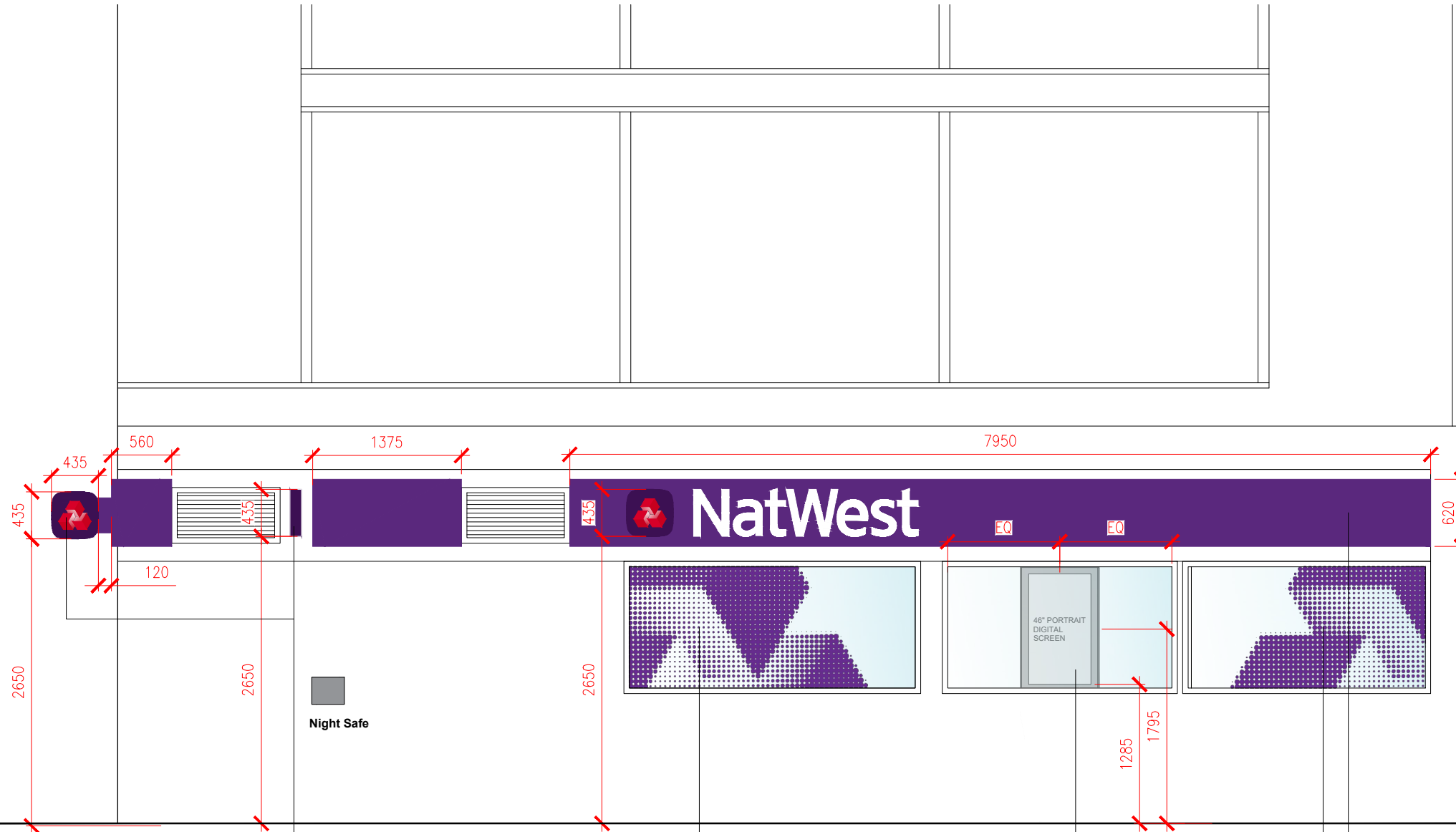


Architecture

Lewis & Hickey Ltd
1 St. Bernard's Row
Edinburgh, EH4 1HW
0131 343 6222
edinburgh@lewishickey.com

Edinburgh | Guildford | London | Manchester | Nottingham

EXTERNAL	
PROPOSED SCOPE	Deep clean shop front and make good (gutter clearing and graffiti removal etc. as required). Repair all aspects as required. Remove window posters. Remove all weeds. Remove all slip bins and make good. Maintain lighting and repair and re-lamp with LED / Energy Saving.
SPECIALIST SIGNAGE CONTRACTOR	Specialist signage contractor to check all heights and sizes on site and all statutory consents are in place prior to manufacturer of proposed signage shown.
FASCIA PANEL	REPLACE FASCIA SIGN WITH NEW BUTTON LOGO
PROJECTING SIGN	REPLACE PROJECTING SIGN WITH NEW
MANIFESTATIONS	INSTALL NEW "HALF TONE" GRAPHIC AS SHOWN
DIGITAL SCREEN	1NO. NEW 46" DIGITAL SCREEN, POLE MOUNTED



REPLACE PROJECTING SIGN WITH NEW 'BUTTON' LOGO PROJECTING SIGN. INTERNAL ILLUMINATION - RED CHEVRON ONLY

APPLY VINYL HALFTONE LOGO AT 150% TO COMPOSITION SHOWN (INTERNALLY INSTALLED) - CHAMPION PURPLE LOGO

NEW 46" DIGITAL SCREEN; POLE MOUNTED

APPLY VINYL HALFTONE LOGO AT 150% TO COMPOSITION SHOWN (INTERNALLY INSTALLED) - CHAMPION PURPLE LOGO
NEW INTERNALLY ILLUMINATED FASCIA SIGNAGE (GOLD TIER) WITH FACE ILLUMINATED LETTERS AND LOGO SIGN AND HALO ILLUMINATED BUTTON SIGN. MAIN LETTERING TO BE INTERNALLY ILLUMINATED - WHITE

rev	date	description	drawn	checked
C	11/04/23	UPDATED TO COUNCIL COMMENTS	KL	KL
B	11/03/23	UPDATED TO CP ISSUE	MD	MD
A	16/02/23	UPDATED TO RECEIVED COMMENTS	KL	KL



address
NW TOTTENHAM COURT ROAD
45 TOTTENHAM COURT ROAD
LONDON
W1T 2EA

ref no. - sortcode -

description
ELEVATION 2
AS PROPOSED
REFRESH - LARGE

status
CONTRACTOR'S PROPOSAL

IPMS1	-	sqm	-
IPMS2	-	sqm	-
IPMS3	-	sqm	-

scale 1:50 paper size A3 brand

drn date 26/01/23 chk date 27/01/23

nw drawing number E7427-GA-E2 rev. C

