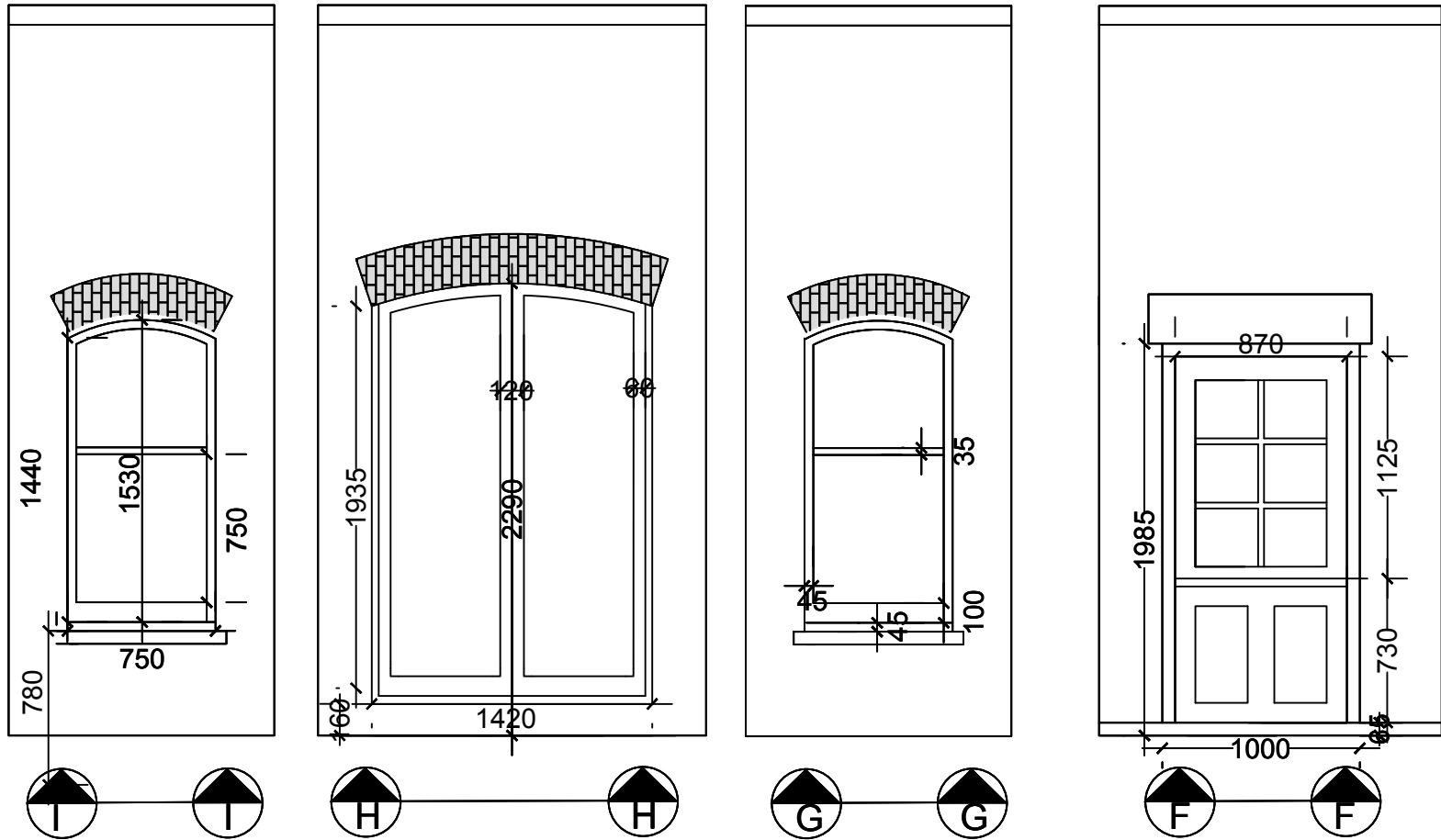


Proposed Back Elevation



Notes:

- Door F-F replaced with stable door, top half fixed lights doubled glazed, bottom half wood panel
- Sash windows I-I & G-G replaced like for like with double glazing
- Door H-H replaced with similar style, extending height of fixed lights in double glazing

2023/07/03	Flat 1, 14 Ellerdale Rd
Not to Scale.	DWG. No. TH/ER/P03