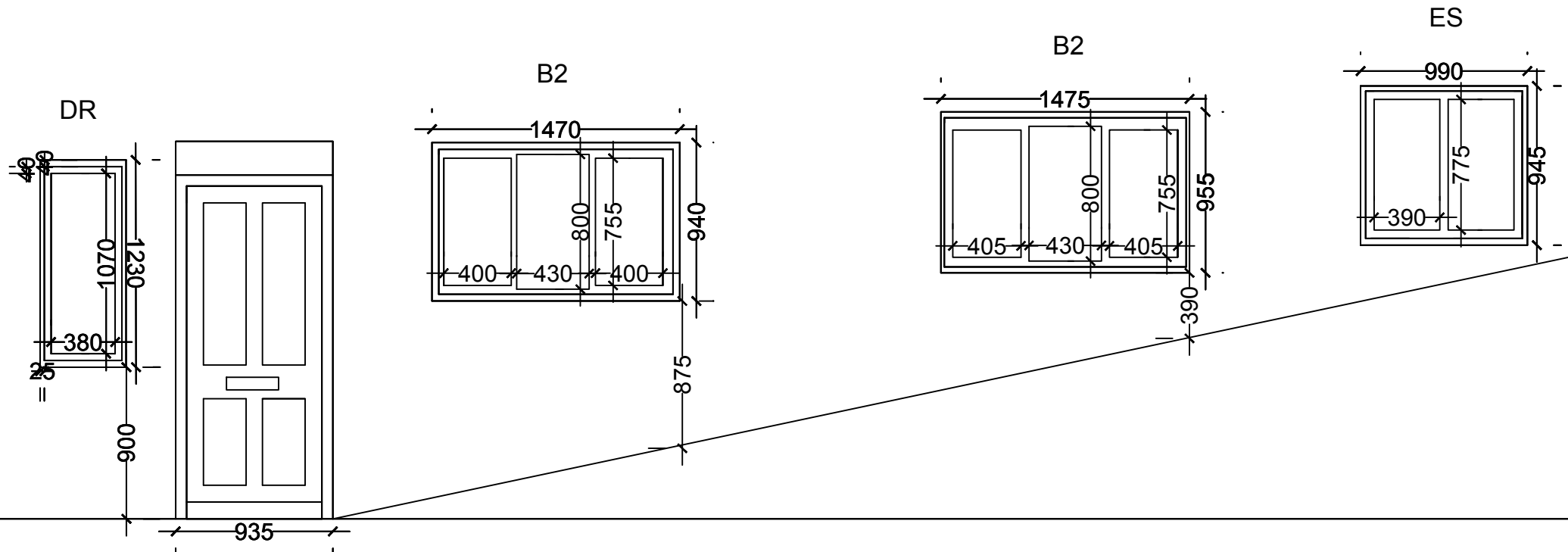


Proposed Flank Elevation



Notes (from left to right on elevation E-E):

- Dining Room (DR) casement window replaced with like for like single pane window (double glazed)
- Bedroom 2 (B2) casement windows replaced with 3 panes, sides opening, middle fixed (double glazed)
- En-suite (ES) casement window replaced with 2 panes, both opening (double glazed)



2023/07/03	Flat 1, 14 Ellerdale Rd
Not to Scale.	DWG. No. TH/ER/P02