

Position: LZ00706

Stems: 1

Species: Ulmus americana (American Elm)

Site: LZ 26 - Car Park (Pump Station)

Location: London Zoo

Grid Ref: TQ 28346 83602

Owner: The Royal Parks



20230629_110057.jpg

Tree Works: 29/06/2023

Height: 7-14 metres

Age: Semi-mature

Trunk: 230 mm

Spread: 9 to 12 meters

Features:

Conditions: Broken branch - Main leading stem split in three directions.

Priority: 4 - Low

Visited By: HOR

Failure: Potentially

Target: Very High

Impact: Small <10

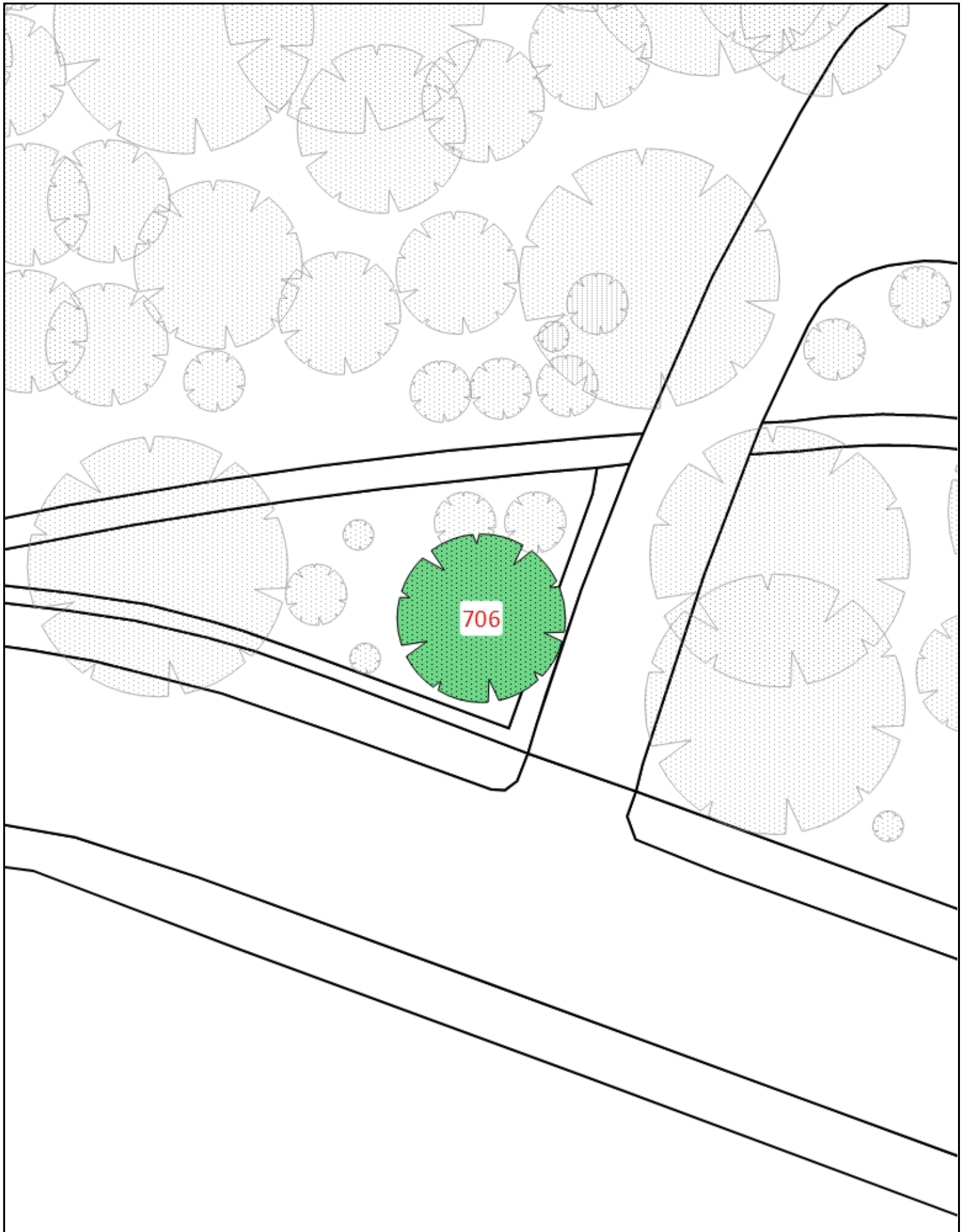
Authority: Camden

Recommendations: Crown reduction as specified - Tree made safe by removing snapped-out limbs.

Reduce leader to suitable growing point and tip prune remaining branches to form suitable tree shape (approx 3-4 metres).

Works:

Comments:



 ZSL LET'S WORK FOR WILDLIFE	LZ 26 - Car Park (Pump Station)	Scale	1: 316	
		Date	29/06/2023	