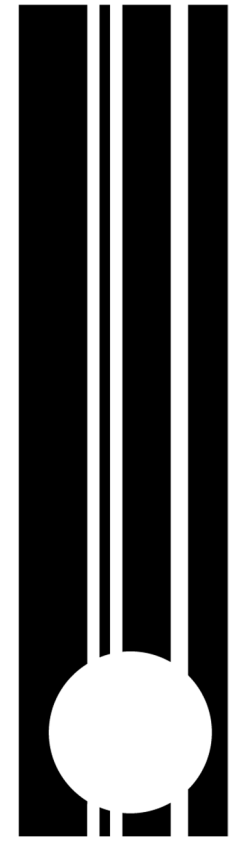
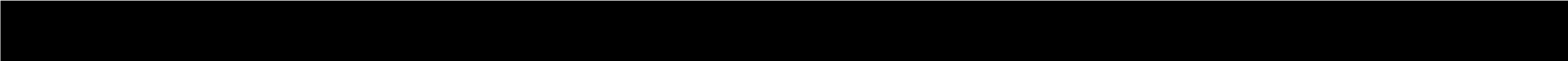



**OXFORD VICTORIA HOUSE DEVELOPMENT LTD
VICTORIA HOUSE
BLOOMSBURY SQUARE, LONDON**



KJ Tait

**LEVEL 8- LIFT PARAPET REMOVAL, SERVICE RISERS & ASSOCIATED WORKS, LEVEL 8 LIGHTING; SERVICES STRATEGY REPORT
LISTED BUILDING CONSENT
REVISION P03**







Document History

SUITABILITY	REVISION	DATE	DETAILS	BY	CHKD
S4	P01	07 June 2023	First Issue	MT	MLC
S4	P02	14 June 2023	Second Issue	MT	MLC
S4	P03	28 June 2023	Third Issue	MT	MLC



CONTENTS

1.0 INTRODUCTION

- 1.1 Project Overview
 - 1.2 Level 8 – Lift Parapet Removal
 - 1.3 Service Risers & Associated Works
 - 1.4 Electrical Containment at B1
 - 1.5 External Terrace Lighting at Level 8
-



1.0 INTRODUCTION

1.1 Project Overview

Since listed building consent was granted on 10 November 2022 there have been some minor Mechanical, Electrical and Public (not plumbing) Health changes. We have set out a summary of the changes below which are also referred to in C&W's DAS

The areas included in this application are as follows:

- Level 8 -lift parapet removal
- Service Risers & Associated Works
- Electrical Containment at B1
- Level 8 Terrace Lighting

Detailed in Appendix 1.0 are a set of drawings, which describe the final services arrangements for the following:

- Heating and cooling pipework
- Ventilation ductwork
- Electrical Services

None of these changes will impact on the energy and sustainability strategies which have already been consented.

1.2 Level 8 Lift Parapet Removal

The structural alterations to the Level 8 Lift parapet removal will not impact on the mechanical or electrical services.

The air handling units, ductwork and pipework adjacent to the lift parapet have previously been consented.

1.3 Service Risers & Associated Works

The content of the services risers and plantrooms have already been consented and are not intended to change materially from earlier drawings. However new openings need to be formed into existing risers on all levels to take services from the riser onto the floor. Openings around services will then be sealed and made good.

1.4 Electrical Containment at B1

Consent is sought for the following changes;

- A section of 800mm width electrical containment is proposed to be routed in an area of the B1 Heritage Staircase, where there is already electrical containment

see Figure 1 below;

The architectural finishes at B1 level are different to those on the upper levels.

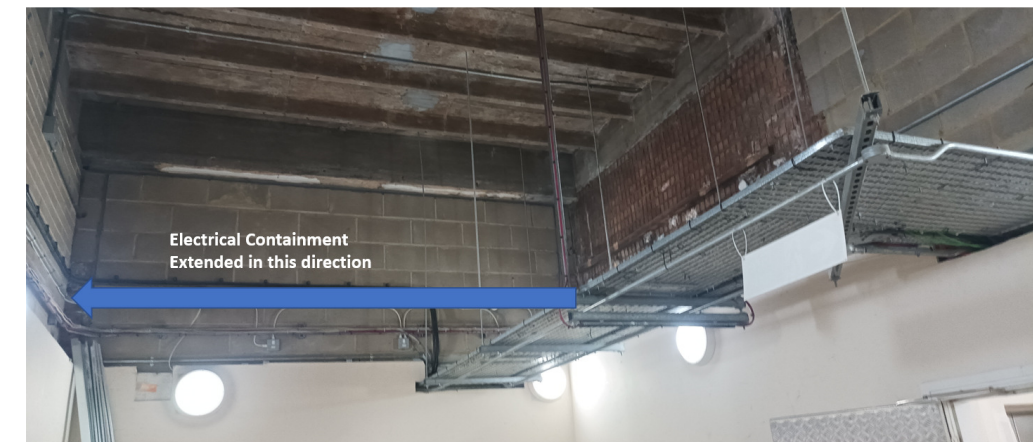


Figure 1 – B1 Heritage Staircase

1.5 External Terrace Lighting at Level 8

Consent is sought for new external lighting fittings to each Terrace at Level 8. Refer to the attached drawings; KJT-XX-08-DR-E-6301-P01

The fitting is a wall mounted conical luminaire. See Figure 2 below;



Figure 2 – Wall mounted Light Fitting for Level 8 Terrace



APPENDIX 1.0
ASSOCIATED DESIGN DRAWINGS