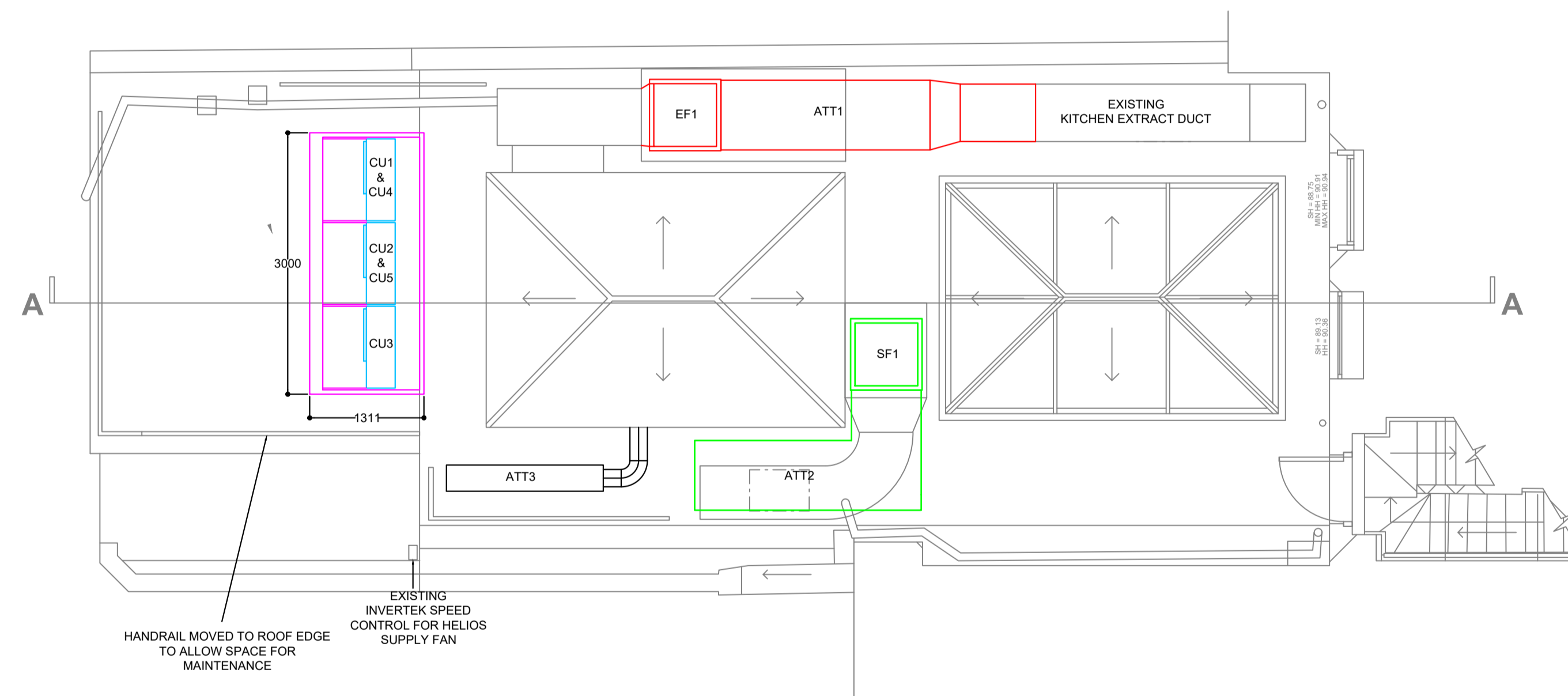


<p>CU1-CU3: SAMSUNG AC100RXADKG CONDENSERS PIPE SIZE: 5/8-3/8 WEIGHT: 74KG DIMS: 940 WIDE X 330 DEEP X 998 HIGH ELEC SUPPLY: 400V, 3PH, 50HZ, 5.45A FLC (16AMP FUSE) SOUND PRESSURE (dB(A)) - 54 @ 1METRE</p>	<p>EF1: SYSTEMAIR MUB062 560EC EXTRACT AIR FAN AIR VOLUME: 2000 L/S @ 350PA WEIGHT: 81.5KG DIMS: 820 WIDE X 820 DEEP X 820 HIGH ELEC SUPPLY: 400V, 3PH, 50HZ, 3.82A MCB SOUND PRESSURE LEVEL @ OUTLET: 68 dB(A)</p>	<p>ATT1: NOICO ATMOSPHERE SIDE ATTENUATOR AIR VOLUME: 2000 L/S @ 50PA WEIGHT: DIMS: 820 WIDE X 2400 DEEP X 820 HIGH</p>	<p>ATT3: NOICO ATMOSPHERE SIDE ATTENUATOR AIR VOLUME: 100 L/S @ 15PA WEIGHT: DIMS: Ø300 WIDE X 1800 DEEP</p>
<p>CU4: DANFOSS OP-MSBM034AJW05E CONDENSER PIPE SIZE: 1/2-1/2 WEIGHT: 62KG DIMS: 1087 WIDE X 484 DEEP X 690 HIGH ELEC SUPPLY: 400V, 3PH, 50HZ, 5.45A FLC (16AMP FUSE) SOUND PRESSURE: dB(A) - 37 @ 10 METRES</p>	<p>SF1: SYSTEMAIR MUB062 560EC SUPPLY AIR FAN AIR VOLUME: 1700 L/S @ 250PA WEIGHT: 81.5KG DIMS: 820 WIDE X 820 DEEP X 820 HIGH ELEC SUPPLY: 400V, 3PH, 50HZ, 3.82A MCB SOUND PRESSURE LEVEL @ OUTLET: 80 dB(A)</p>	<p>ATT2: NOICO ATMOSPHERE SIDE ATTENUATOR MITRE BEND AIR VOLUME: 1700 L/S @ 50PA WEIGHT: DIMS: 820 WIDE X 1200 DEEP (1) X 1200 (2) X 820 HIGH</p>	
<p>CU5: DAIKIN RZASG125MV1 CONDENSER PIPE SIZE: 5/8-3/8 WEIGHT: 70KG DIMS: 940 WIDE X 320 DEEP X 990 HIGH ELEC SUPPLY: 240V, 1PH, 50HZ, 27.8A FLC (32AMP FUSE) SOUND PRESSURE: dB(A) - 57 @ 1 METRE</p>			



**PROPOSED REAR ROOF PLAN
WITH OTTOLENGHI HVAC PLANT**

NOTES

DUCTWORK COLOUR KEY

Orange line	EXTRACT EXHAUST AIR
Red line	KITCHRN EXTRACT
Green line	FRESH AIR SUPPLY (PRIMARY)
Blue line	FRESH AIR INLET
Light blue line	AC SUPPLY AIR (SECONDARY)
Black line	TOILET EXTRACT

REV	REVISION DESCRIPTION	REV DATE



1 BRADDOCK COURT
BASINGSTOKE
HAMPSHIRE
RG21 6AS
M:07889 605592
E: CRAIG@SPIRITUSTECHNICALSERVICES.CO.UK

CLIENT:
OTTOLENGHI

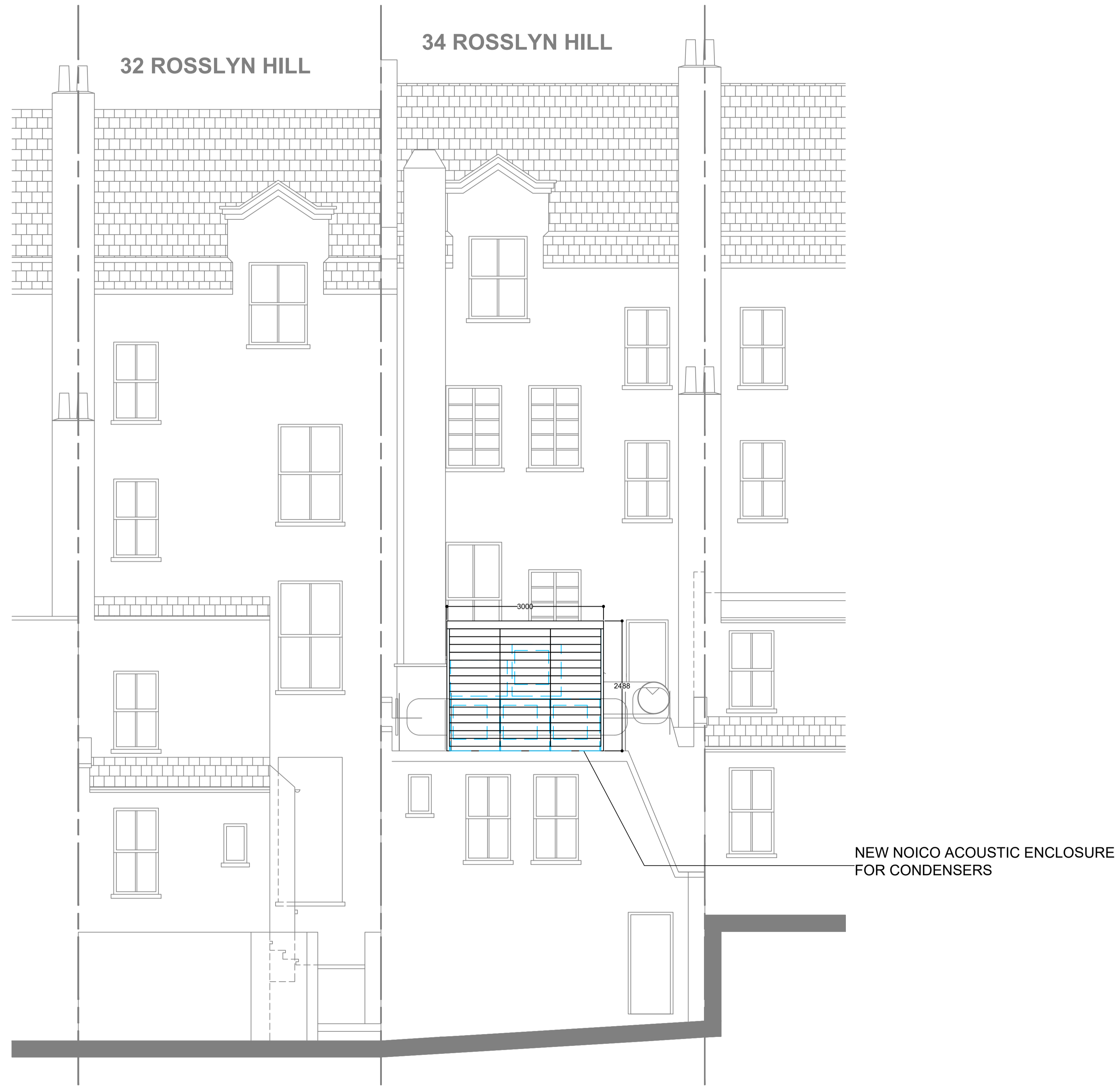
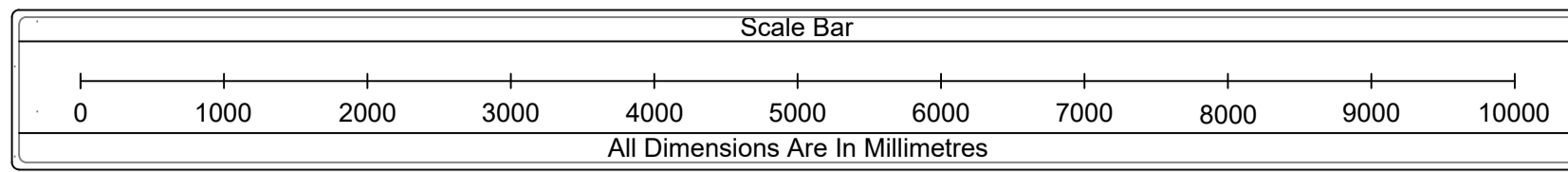
SITE:
32-34 ROSSLYN HILL
HAMPSTEAD
LONDON
NW3 1NH

DRAWING TITLE:
PROPOSED ROOF PLAN
WITH OTTOLENGHI HVAC PLANT

DRAWN BY: CB	DATE: 01.10.2022	SCALE: 1:50 @ A1
-----------------	---------------------	---------------------

DRAWING NUMBER: STS0870-M07	REVISION: -
--------------------------------	----------------

DRAWING STATUS:
FOR APPROVAL



PROPOSED REAR ELEVATION

NOTES

- DUCTWORK COLOUR KEY**
- EXTRACT EXHAUST AIR
 - KITCHEN EXTRACT
 - FRESH AIR SUPPLY (PRIMARY)
 - FRESH AIR INLET
 - AC SUPPLY AIR (SECONDARY)
 - TOILET EXTRACT

REV	REVISION DESCRIPTION	REV DATE



1 BRADDOCK COURT
BASINGSTOKE
HAMPSHIRE
RG21 6AS
M:07889 605592
E: CRAIG@SPIRITUSTECHNICALSERVICES.CO.UK

CLIENT:
OTTOLENGHI

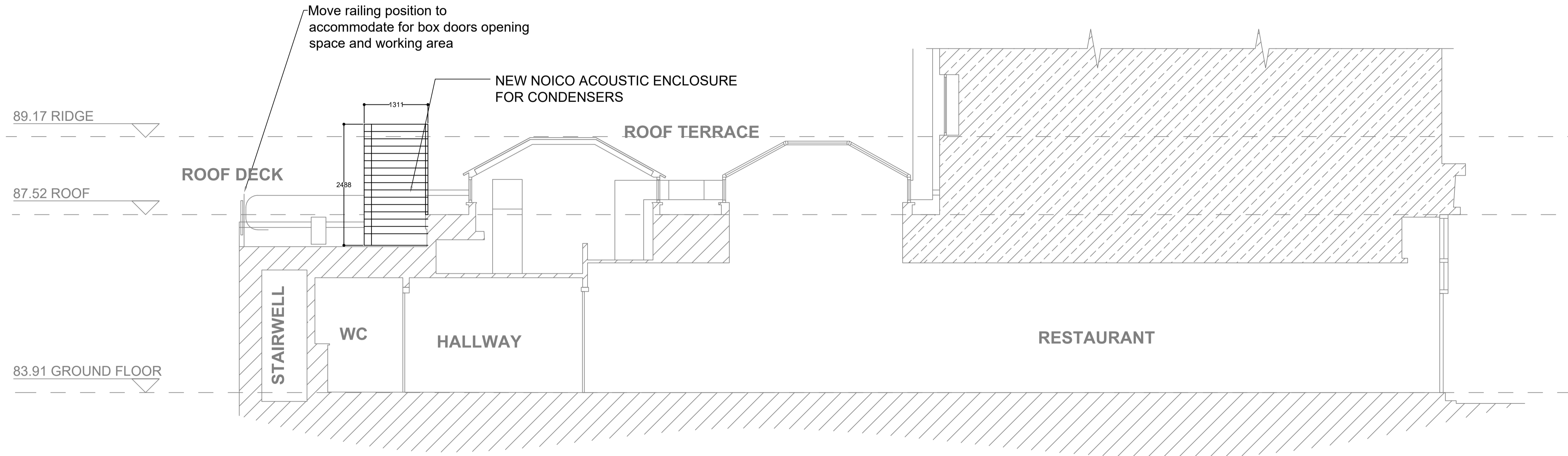
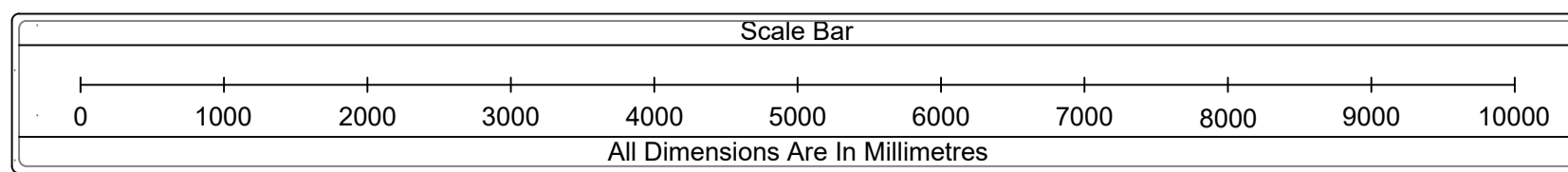
SITE:
32-34 ROSSLYN HILL
HAMPSTEAD
LONDON
NW3 1NH

DRAWING TITLE:
PROPOSED REAR ELEVATION
WITH OTTOLENGHI HVAC PLANT

DRAWN BY: CB	DATE: 01.10.2022	SCALE: 1:50 @ A1
-----------------	---------------------	---------------------

DRAWING NUMBER: STS0870-M08	REVISION: -
--------------------------------	----------------

DRAWING STATUS:
FOR APPROVAL



PROPOSED SECTION A-A

NOTES

DUCTWORK COLOUR KEY

- EXTRACT EXHAUST AIR
- KITCHEN EXTRACT
- FRESH AIR SUPPLY (PRIMARY)
- FRESH AIR INLET
- AC SUPPLY AIR (SECONDARY)
- TOILET EXTRACT

REV	REVISION DESCRIPTION	REV DATE



1 BRADDOCK COURT
BASINGSTOKE
HAMPSHIRE
RG21 6AS
M: 07889 605592
E: CRAIG@SPIRITUSTECHNICALSERVICES.CO.UK

CLIENT:
OTTOLENGHI

SITE:
32-34 ROSSLYN HILL
HAMPSHIRE
LONDON
NW3 1NH

DRAWING TITLE:
PROPOSED SECTION A-A
WITH OTTOLENGHI HVAC PLANT

DRAWN BY: CB	DATE: 01.10.2022	SCALE: 1:50 @ A1
-----------------	---------------------	---------------------

DRAWING NUMBER: STS0870-M09	REVISION: -
--------------------------------	----------------

DRAWING STATUS:
FOR APPROVAL