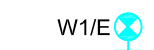


Legend

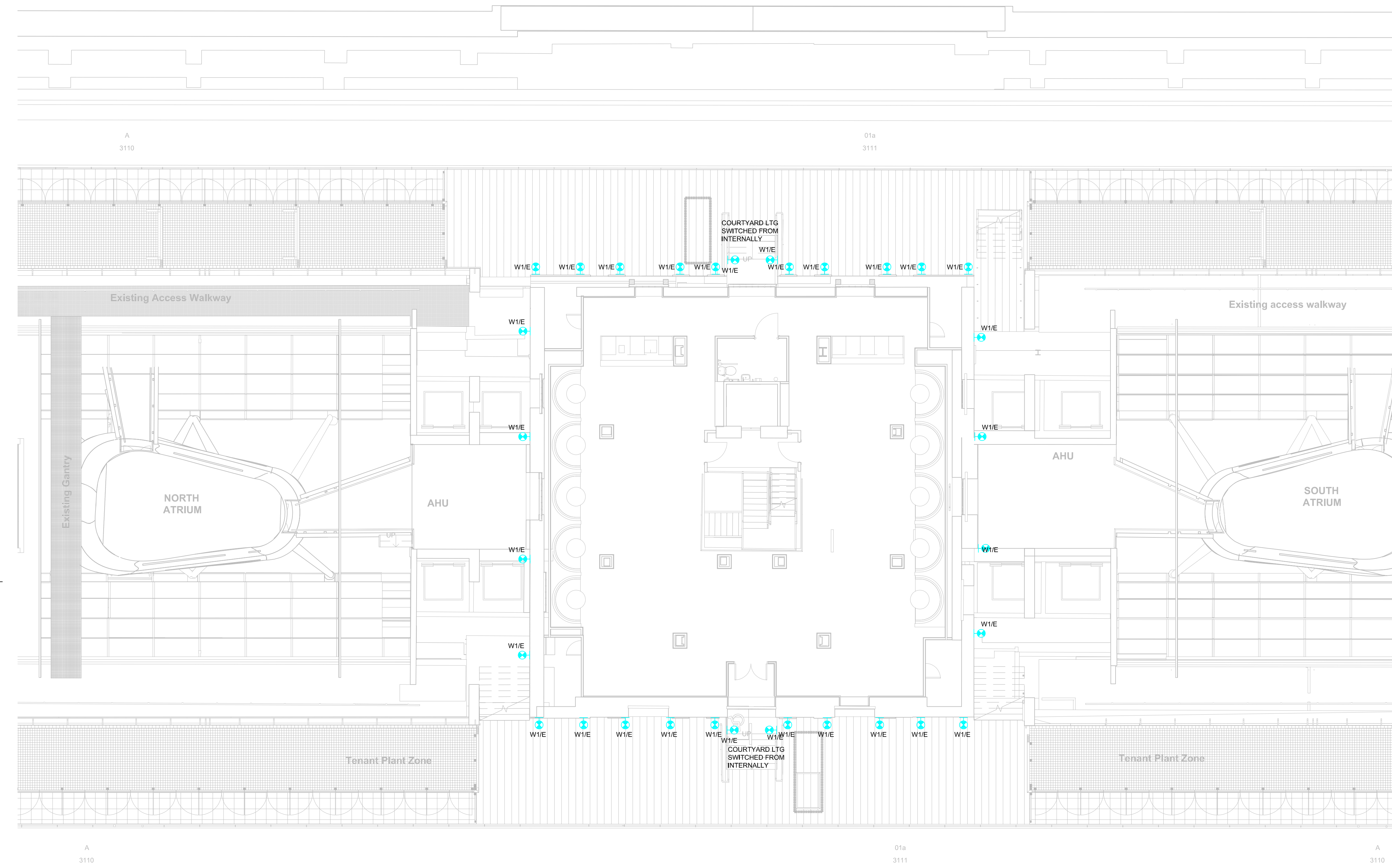


WALL MOUNTED EXTERNAL ARCHITECTURAL LUMINAIRE WITH INTEGRAL EMERGENCY. 17W 1526LM 4000K LED IP65 IK07. FORWARD THROW DOWNWARD LIGHT DISTRIBUTION FINISHED IN GREY.

NOTES:

DO NOT SCALE FROM THIS DRAWING.

- THIS DRAWING TO BE READ IN CONJUNCTION WITH KJ TAIT ELECTRICAL SPECIFICATION, MECHANICAL SERVICES DRAWINGS, ARCHITECTS AND STRUCTURAL ENGINEERS DRAWINGS.
- ELECTRICAL INSTALLATION SHALL COMPLY FULLY WITH BS 7671: 2018 AND ALL CURRENT AMENDMENTS KJ TAIT ENGINEER'S SPECIFICATION AND THE EMPLOYER'S REQUIREMENTS.
- THE EMERGENCY LIGHTING INSTALLATION SHALL FULLY COMPLY WITH BS5266: PART 1 2016 AND BSEN1838: 2013.
- THE GENERAL ARTIFICIAL LIGHTING SCHEME SHALL BE DESIGNED TO COMPLY WITH THE APPROPRIATE BUILDING STANDARDS BY FOLLOWING THE ADVICE AND GUIDANCE GIVEN IN THE SOCIETY OF LIGHT AND LIGHTING (CSLS) CODE FOR LIGHTING.
- ENERGY EFFICIENT LED SOURCES DRIVERS, REFLECTORS AND CONTROLS SHALL BE USED THROUGHOUT. ALL LUMINAIRES UTILISING LED SOURCES LAMPS SHALL HAVE HIGH FREQUENCY DRIVERS
- ALL TENANT OFFICE, LAB & WRITE UP AREAS SHALL HAVE AN AUTOMATIC LIGHTING CONTROL SYSTEM OPERATED BY TIMED, OCCUPANCY AND AMBIENT LIGHT INPUTS, MANUAL OVERRIDE PROCESS HAS ALSO BEEN DESIGNED.
- ALL CABLING SHALL BE XLPE/LSF DRAWN INTO HDG CONDUIT AND TRUNKING
- ALL EMERGENCY CHARGE LED'S SHALL BE VISIBLE FROM BELOW THE LUMINAIRE.
- ALL LUMINAIRES INSTALLED WITHIN A DROPPED CEILING OR SUSPENDED CEILING GRID SHALL BE AFFORDED 1No. SECONDARY SUSPENSION USING GRIPPLE WIRE FROM THE CONCRETE SOFFIT.
- ALL CABLING AND ACCESSORIES TO BE CONCEALED FLUSH FIXED WITH EXCEPTION OF PLANTROOMS AND CEILING VOIDS
- ALL LED SOURCE COLOURS SHALL BE 4000K
- ALL EMERGENCY SIGN LUMINAIRES TO BE SUPPLIED WITH CORRECT LEGEND.
- A FULLY AUTOMATIC EMERGENCY LIGHTING MONITORING AND TESTING SYSTEM SHALL BE INSTALLED. EMERGENCY TEST FACILITIES VIA KEY SWITCH TO LIGHTING CONTROL SYSTEM TEST KEYSWITCHES SHALL BE LOCATED WITHIN RISER ADJACENT TO ACU'S AND DISTRIBUTION BOARDS.
- ALL TEST KEY SWITCHES TO BE LABELLED ACCORDINGLY.
- ALL LIGHT SWITCHES TO BE GRID TYPE. ALL LIGHTING SWITCHES LINKED TO LCMS & HWLCMS OR DALI NETWORK SHALL BE 2WAY CENTRE RETRACTIVE TYPE.
- LIGHT SWITCHES TO BE INSTALLED AT 1200mm FROM FINISHED FLOOR LEVEL.
- ACCESSORIES SHALL BE AS FOLLOWS:  
MK LOGIC PLUS - GENERALLY THROUGHOUT  
MK METALCLAD - FLOOR/CEILING VOIDS
- ALL LIGHTING CIRCUITS TO BE PROTECTED BY TYPE C MCB'S. THESE SHALL GENERALLY BE 10AMP RATED WITH 2.5SQ.MM XLPE/LSF CIRCUITS.



SUIT-REV	DATE	DESCRIPTION	LBC INFORMATION	ISSUE	KR	SH
S2-P01	25/05/2023					
STATUS						

FOR INFORMATION

THIS DRAWING IS COPYRIGHT. DO NOT SCALE FROM DRAWING. THE CONTRACTOR AND THEIR SUB-CONTRACTORS ARE TO VERIFY ALL DIMENSIONS ON SITE BEFORE MAKING SHOP DRAWINGS OR COMMENCING MANUFACTURE.

**KJ TAIT**  
ENGINEERS

1 Fitzroy Square  
London W1T 5HF  
T +44 (0) 207 388 0952  
E london@kjtait.com  
W www.kjtait.com

PROJECT INFORMATION

CLIENT OXFORD VICTORIA HOUSE  
PROJECT DEVELOPMENT LTD  
LONDON, WC1B 4DA

DRAWING INFORMATION

DRAWING TITLE ELECTRICAL SERVICES  
8TH FLOOR EXTERNAL  
LIGHTING LAYOUT

DESIGNED BY KR DATE MAY 2023

DRAWN BY MZ KJT JOB No.

SCALE 1:100 @ A1 L3221

JOB CODE ORIGIN-VOL-LEVEL-TYPE-ROLE-CLASS NUMBER SUIT-REV  
L3221 KJT-XX-08-DR-E-6301 S2-P01