

Agar Grove Phase 1c

Air Source Heat Pump Design - Comparison

Hawkins\
Brown

Air Source Heat Pump Design - Comparison

Revisions

06/10/22	-	Initial Issue
07/11/22	A	Updated to show street views
06/12/22	B	Updated to show alternative enclosure cladding
22/02/23	C	Updated for public consultation
02/03/23	D	Notation added to elevations
27/07/23	E	ASHP RAL Justification

Air Source Heat Pump Design - Comparison

Phase 1c - Approved and Minor Material Ammendment

- The changes affect both Blocks I and JKL.

- Air Source Heat Pump (ASHP) have been added following development of the blocks from detailed planning (consented August 2014) and included in the detailed design (consented October 2020) Enclosures are needed for noise mitigation and there is a perimeter within these for maintenance access. This noise mitigation is also required as part of the planning conditions.

- Since the October 2020 approval, the design has moved from one large ASHP to two small ASHPs per core.

- The manufacturer, Daikin require a minimum of two ASHP machines on communal systems, for “better low load turn down, riding the defrost cycle, and (partial) coverage through maintenance periods.”

- This came about due to design development and this evolving technology as per the evolving requirements from Daikin (manufacturers).

- The approved drawings from October 2020 didn’t show dimensions for the units.

- These will be set back from facade edge to minimise visibility and after testing other colour options in discussion with planners, we feel that grey is the most suitable colour. This will tone with the brickwork to the top floor of Block JKL where there is a partial height brick parapet, and a metal balustrade above to enable safe maintenance of the roof.

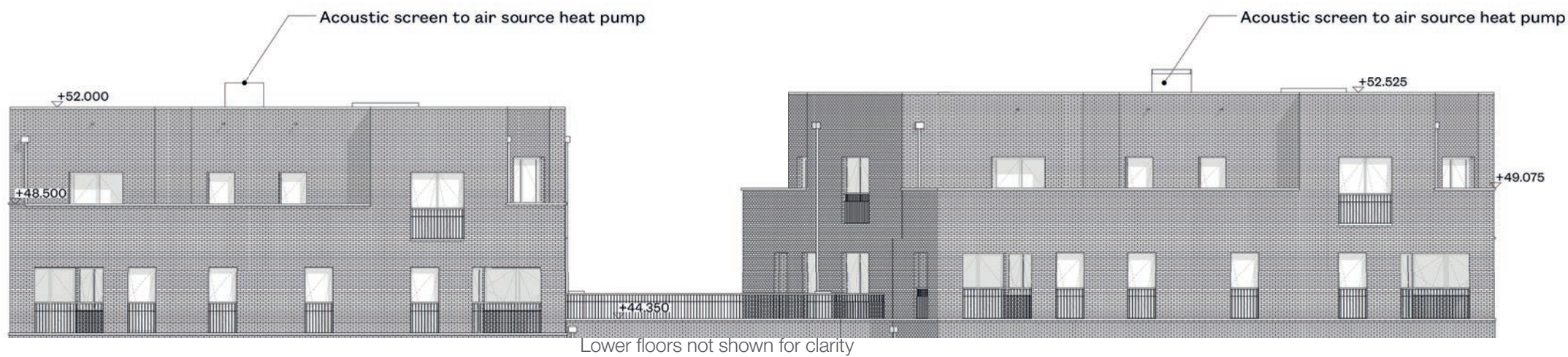
- The louvred element of the enclosure is from roof to waist height, so should not be visible from the street at all.

- Due to the full height brick parapet and set back nature of the ASHP, on Block I these are not visible in any of the street views we have produced.

- We note that due to perspective, the heights shown in elevation appear more dramatic than the units will appear from street level.

Air Source Heat Pump Design - Comparison

Block I - East Elevation



ASHPs and enclosure - Approved October 2020
East Elevation

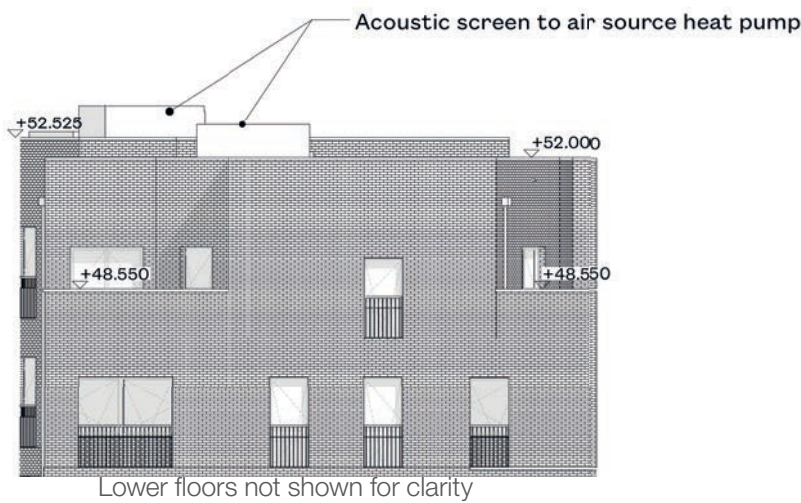


ASHPs and enclosure - Proposed Minor Material Amendment February 2023
East Elevation

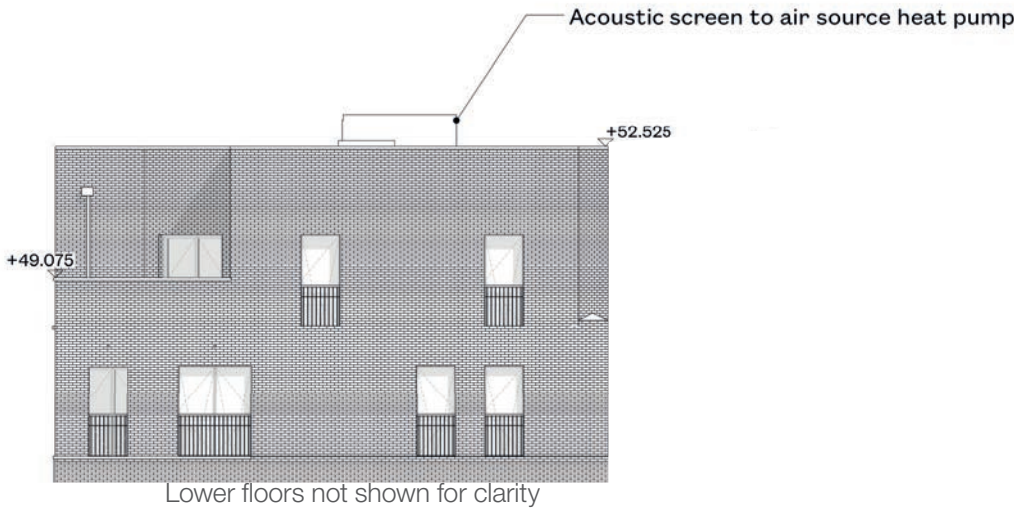
Note: Brick remains unchanged. Graphic differences due to drawing production by MAE and HB varying in styles.

Air Source Heat Pump Design - Comparison

Block I - North/South Elevations



ASHPs and enclosure - Approved October 2020
South Elevation



ASHPs and enclosure - Approved October 2020
North Elevation



ASHPs and enclosure - Proposed Minor Material Amendment February 2023
South Elevation

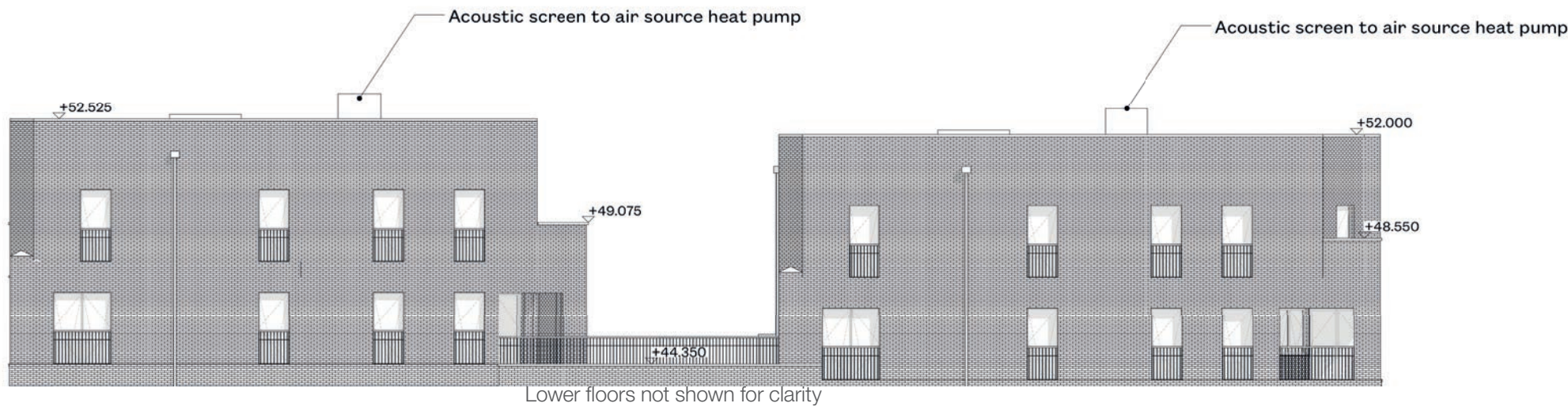


ASHPs and enclosure - Proposed Minor Material Amendment February 2023
South Elevation

Note: Brick remains unchanged. Graphic differences due to drawing production by MAE and HB varying in styles.

Air Source Heat Pump Design - Comparison

Block I - West Elevation



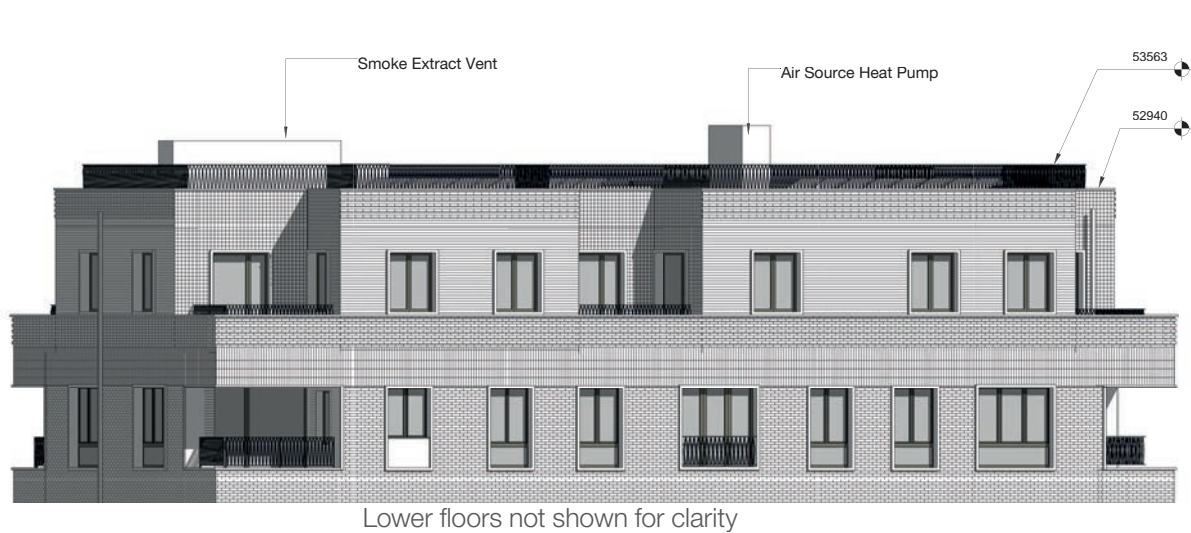
ASHPs and enclosure - Approved October 2020
West Elevation



ASHPs and enclosure - Proposed Minor Material Amendment February 2023
West Elevation

Note: Brick remains unchanged. Graphic differences due to drawing production by MAE and HB varying in styles.

Air Source Heat Pump Design - Comparison
Block JKL - East/North Elevations



ASHPs and enclosure - Approved October 2020
East Elevation



ASHPs and enclosure - Approved October 2020
North Elevation



ASHPs and enclosure - Proposed Minor Material Amendment February 2023
East Elevation

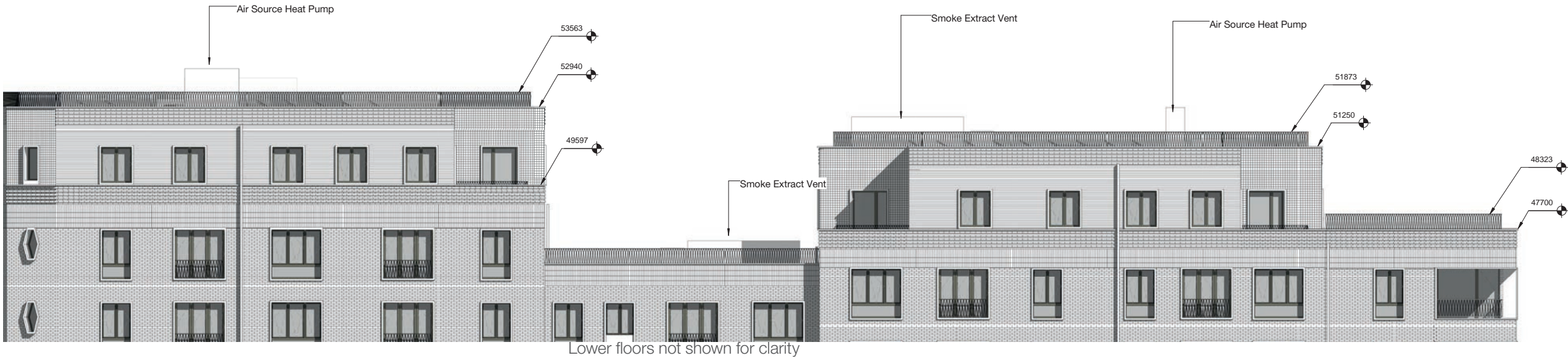


ASHPs and enclosure - Proposed Minor Material Amendment February 2023
North Elevation

Note: Brick remains unchanged. Graphic differences due to drawing production by MAE and HB varying in styles.

Air Source Heat Pump Design - Comparison

Block JKL - West Elevation



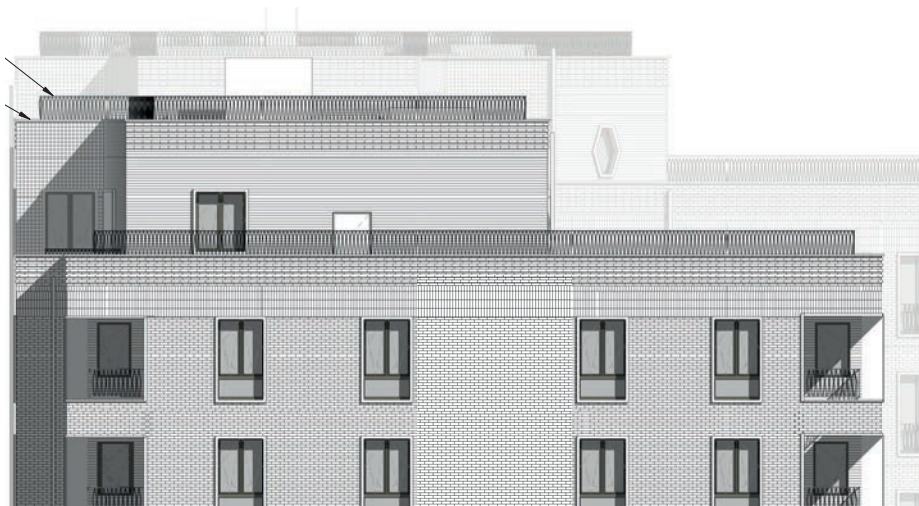
ASHPs and enclosure - Approved October 2020
West Elevation



ASHPs and enclosure - Proposed Minor Material Amendment February 2023
West Elevation

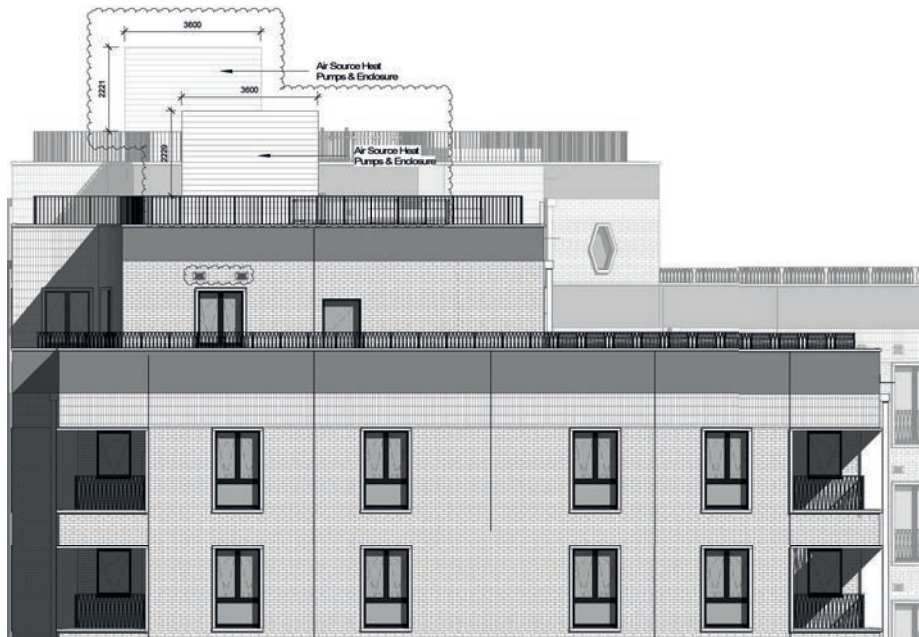
Note: Brick remains unchanged. Graphic differences due to drawing production by MAE and HB varying in styles.

Air Source Heat Pump Design - Comparison
Block JKL - South Elevation



Lower floors not shown for clarity

ASHPs and enclosure - Approved October 2020
South Elevation



Lower floors not shown for clarity

ASHPs and enclosure - Proposed Minor Material Amendment February 2023
South Elevation

Note: Brick remains unchanged. Graphic differences due to drawing production by MAE and HB varying in styles.

Air Source Heat Pump Design - Comparison

Milburn Lane facing South



Approved October 2020



Proposed Minor Material Amendment February 2023

Air Source Heat Pump Design - Comparison

Agar Grove facing West



Approved October 2020

ASHP Enclosure
RAL 7032 Pebble Grey

Balustrade
RAL 7003 Moss Grey
Shown in elevations only as part of
2020 approved scheme - not previously
shown in CGIs



Proposed Minor Material Amendment February 2023

Air Source Heat Pump Design
Agar Grove facing West - Detail view



Street View Along Agar Grove - Proposed Minor Material Amendment February 2023



Cropped view of ASHP enclosure - Proposed Minor Material Amendment February 2023

Air Source Heat Pump Design - Comparison

Milburn Lane facing North



Approved October 2020 [No view showing JKL from this angle in October 2020 Approval]

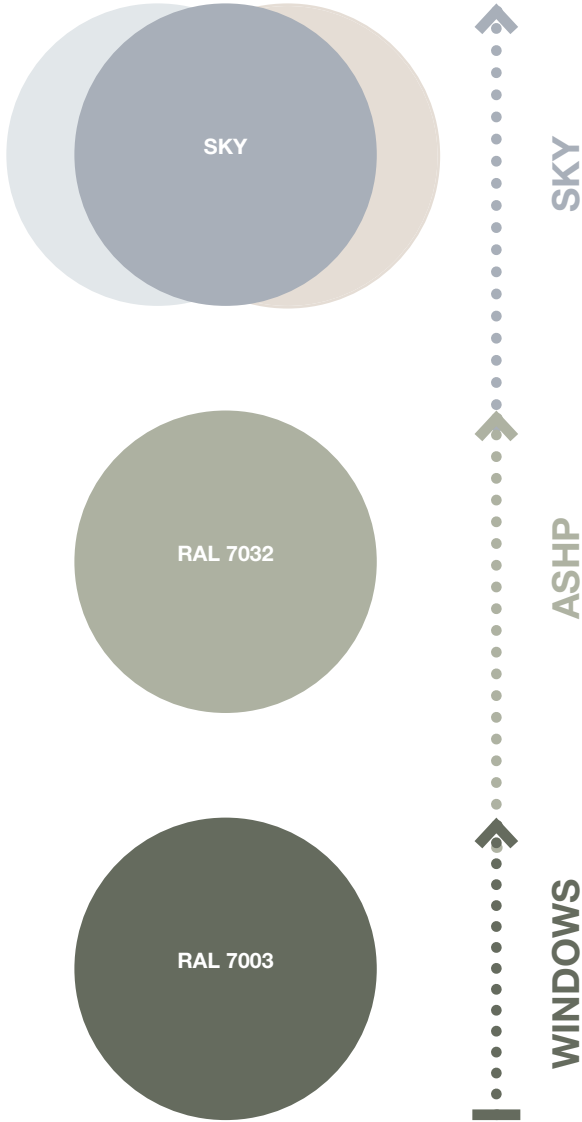


Proposed Minor Material Amendment February 2023

Air Source Heat Pump Design
Block JKL - RAL Colours



Street View Along Agar Grove - Proposed Minor Material Amendment February 2023



The ASHP will be clad in a metal finish to the colour of RAL 7032.

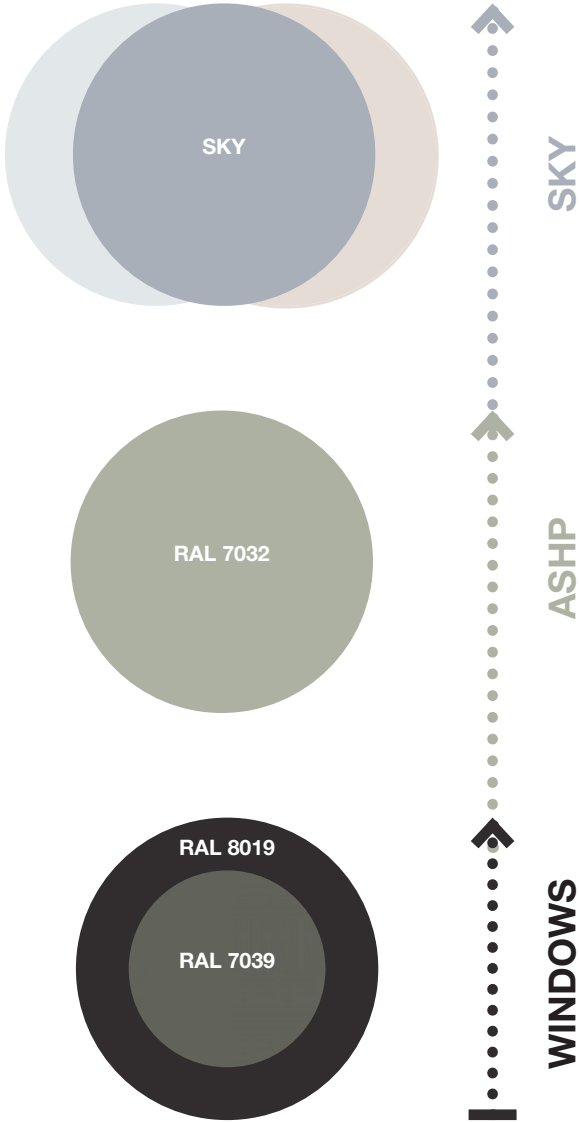
On Block JKL which has a window frame & sash colour of RAL 7003, the RAL 7032 of the ASHP is a softer tone which conforms to the varying neutral blues and greys of the sky.

There were options to use the RAL colour of the windows on the ASHP, however this made the ASHP stand out more vividly in test renders, whilst the RAL 7032 was a softer green tone and created a natural vertical fade up the elevation.

Air Source Heat Pump Design
Block I - RAL Colours



Proposed Minor Material Amendment February 2023



The ASHP will be clad in a metal finish to the colour of RAL 7032.

On Block I which has a window frame colour of RAL 8019 & a sash colour of 7039, the RAL 7032 of the ASHP is a softer tone which conforms with the varying neutral blues and greys of the sky.

Contact

London\
Edinburgh\
Manchester\
Los Angeles\

hawkinsbrown.com