

Agar Grove Phase 1c

Air Source Heat Pump Design - Comparison

Hawkins\
Brown

Air Source Heat Pump Design - Comparison

Phase 1c - Approved and Minor Material Amendment

- The changes affect both Blocks I and JKL.
- Air source heat pumps (ASHPs) have been added following development of the blocks from detailed planning (consented August 2014) and included in the detailed design (consented October 2020). Enclosures are needed for noise mitigation and there is a perimeter within these for maintenance access. This noise mitigation is also required as part of the planning conditions.
- Block I is split into two cores and Block JKL into three. Each core has a lift and staircase.
- Since the October 2020 approval, the design has moved from one large ASHP to two small ASHPs per core, both housed in one enclosure.
- The manufacturer, Daikin, requires a minimum of two ASHP machines on communal systems, for “better low load turn down, riding the defrost cycle, and (partial) coverage through maintenance periods.”
- This came about due to design development and this evolving technology as per the evolving requirements from Daikin.
- The approved drawings from October 2020 didn't show dimensions for the units.
- These will be set back from the facade edge to minimise visibility and, after testing other colour options in discussion with planners, we feel that grey is the most suitable colour. This will tone with the brickwork to the top floor of Block JKL where there is a partial height brick parapet, and a metal balustrade above to enable safe maintenance of the roof.
- The louvred element of the enclosure is from roof to waist height, so should not be visible from the street at all.
- Due to the full height brick parapet and set back nature of the ASHP, on Block I these are not visible in any of the street views we have produced.
- We note that due to perspective, the heights shown in elevation appear more dramatic than the units will appear from street level.

Air Source Heat Pump Design - Comparison

Block I - East Elevation



ASHPs and enclosure - Approved October 2020
East Elevation

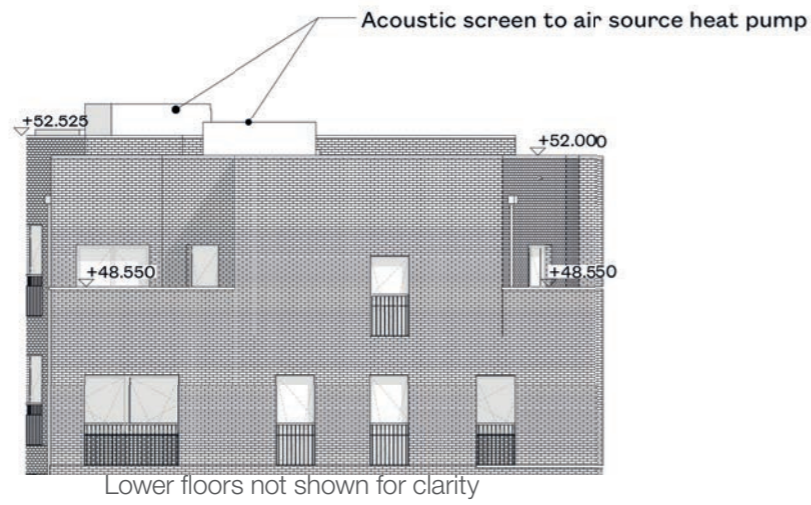


ASHPs and enclosure - Proposed Minor Material Amendment February 2023
East Elevation

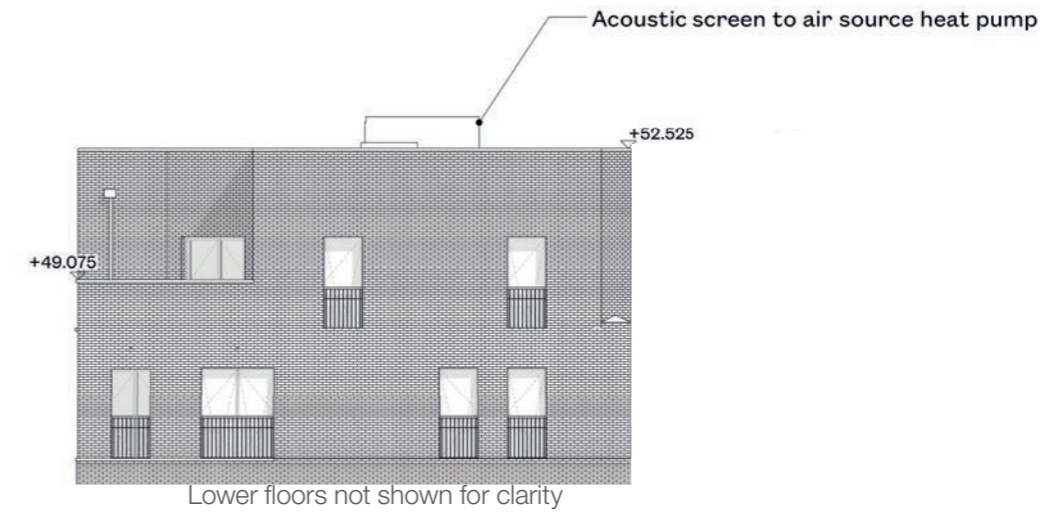
Note: Brick remains unchanged. Graphic differences due to drawing production by MAE Architects and Hawkins\Brown Architects varying in styles.

Air Source Heat Pump Design - Comparison

Block I - North/South Elevations



ASHPs and enclosure - Approved October 2020
South Elevation



ASHPs and enclosure - Approved October 2020
North Elevation



ASHPs and enclosure - Proposed Minor Material Amendment February 2023
South Elevation

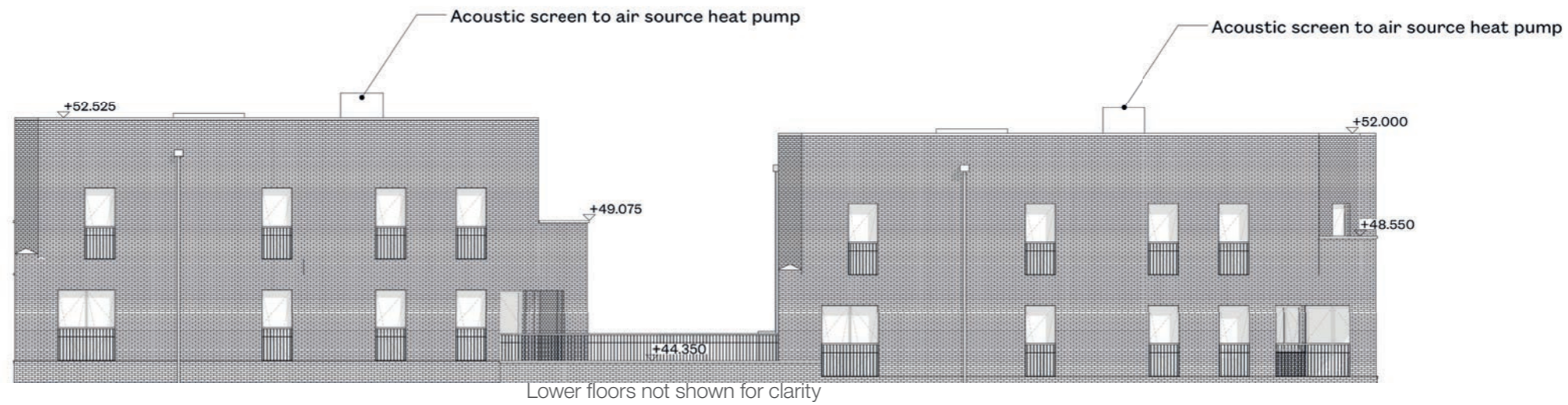


ASHPs and enclosure - Proposed Minor Material Amendment February 2023
South Elevation

Note: Brick remains unchanged. Graphic differences due to drawing production by MAE Architects and Hawkins\Brown Architects varying in styles.

Air Source Heat Pump Design - Comparison

Block I - West Elevation



ASHPs and enclosure - Approved October 2020
West Elevation

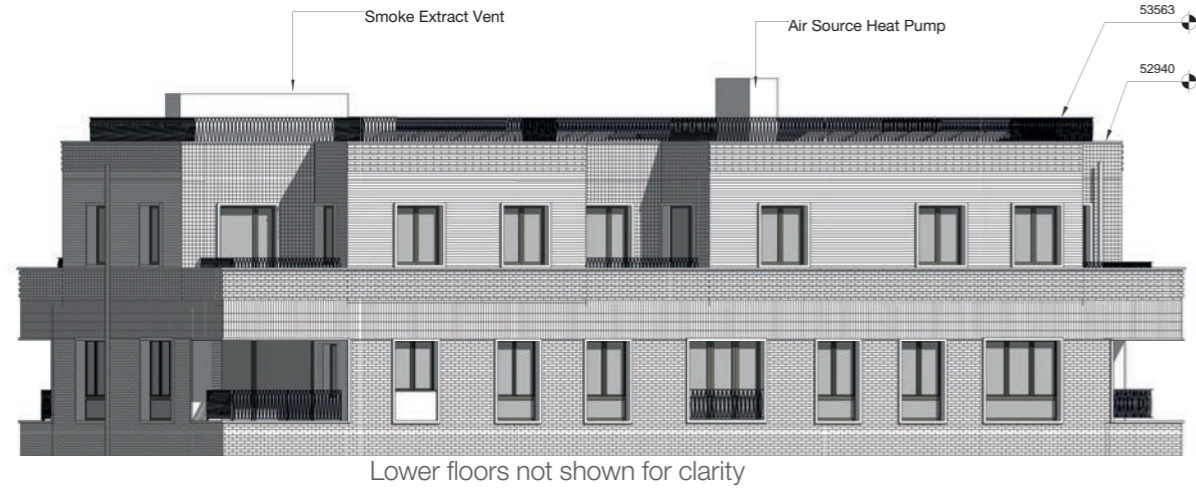


ASHPs and enclosure - Proposed Minor Material Amendment February 2023
West Elevation

Note: Brick remains unchanged. Graphic differences due to drawing production by MAE Architects and Hawkins\Brown Architects varying in styles.

Air Source Heat Pump Design - Comparison

Block JKL - East/North Elevations



ASHPs and enclosure - Approved October 2020
East Elevation



ASHPs and enclosure - Approved October 2020
North Elevation



ASHPs and enclosure - Proposed Minor Material Amendment February 2023
East Elevation

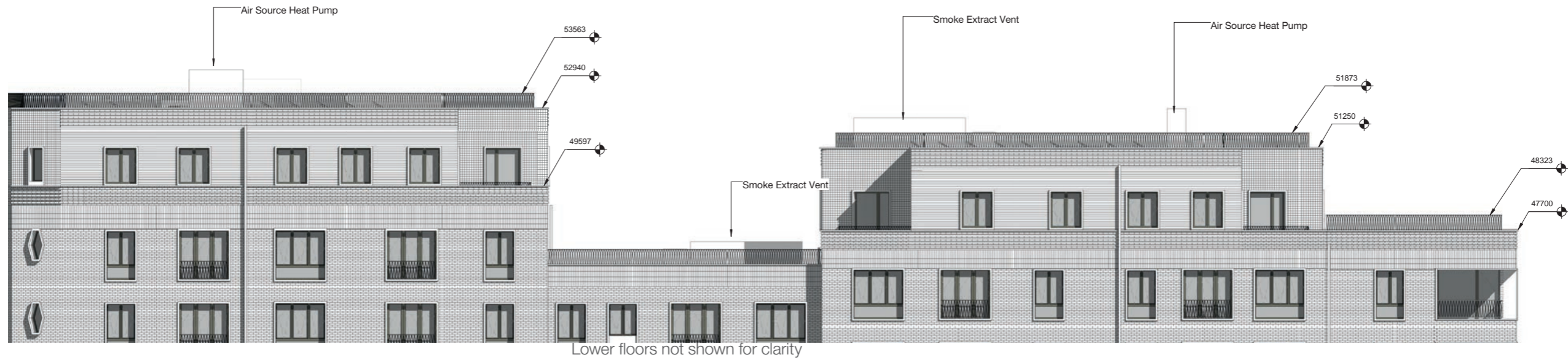


ASHPs and enclosure - Proposed Minor Material Amendment February 2023
North Elevation

Note: Brick remains unchanged. Graphic differences due to drawing production by MAE Architects and Hawkins\Brown Architects varying in styles.

Air Source Heat Pump Design - Comparison

Block JKL - West Elevation



ASHPs and enclosure - Approved October 2020
West Elevation



ASHPs and enclosure - Proposed Minor Material Amendment February 2023
West Elevation

Note: Brick remains unchanged. Graphic differences due to drawing production by MAE Architects and Hawkins\Brown Architects varying in styles.