 Swanton CONSULTING	Swanton Consulting Ltd Erith House Queen Street Erith Kent DA8 1RP	Ref: 2354-DB01-P00	Page: 40
		Project: 1 Museum Street	
		By: JL	Date: 17/11/2020
Title: Trial Pit Log			

TP13

TBC

	Swanton Consulting Ltd Erith House Queen Street Erith Kent DA8 1RP	Ref: 2354-DB01-P00	Page: 41
		Project: 1 Museum Street	
		By: JL	Date: 17/11/2020
Title: Trial Pit Log			

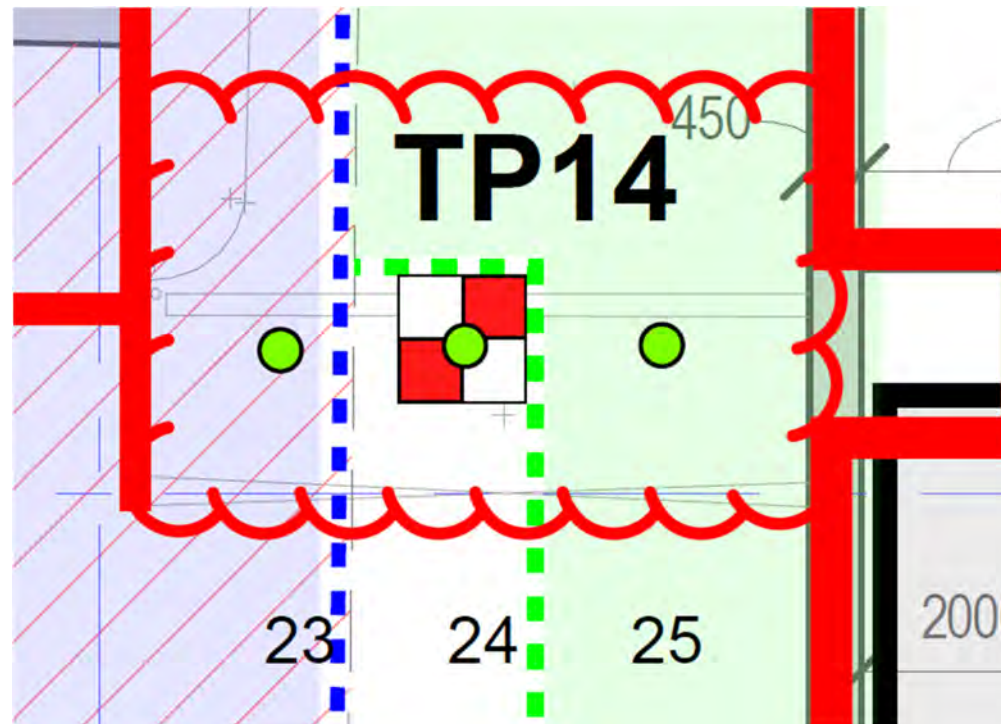
TP14 Plan View

TP14 was broken out to a depth of 200-300 mm to determine the reinforcement. Any further was too laborious through solid concrete so cores were instead carried out. Cores carried out encountered 1050mm – 1350mm thick concrete. Reinforcement comprised B25@300mmc/c, 100mm cover.



Title: Trial Pit Log

TP14 Core Hole Locations



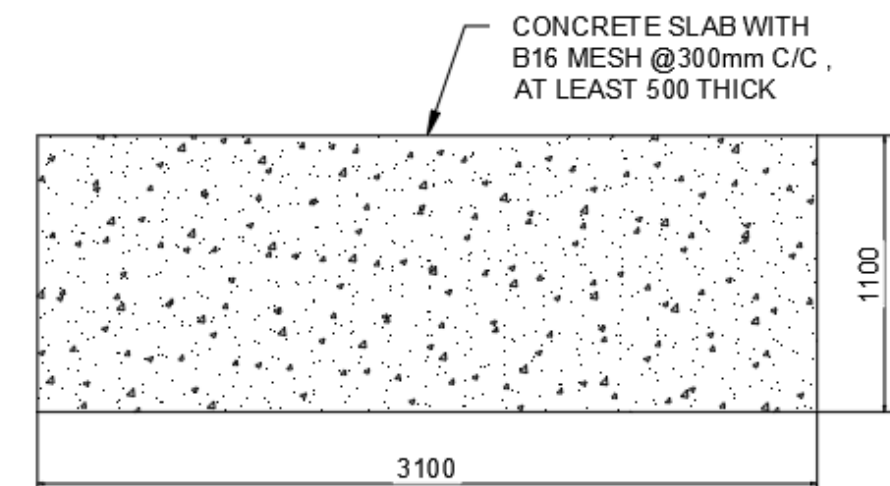
TP14 Core depths

Ref	Depth	Comments
23	1350	To base of concrete
24	1350	To base of concrete
25	1350	To base of concrete

Title: Trial Pit Log

TP15 Plan view

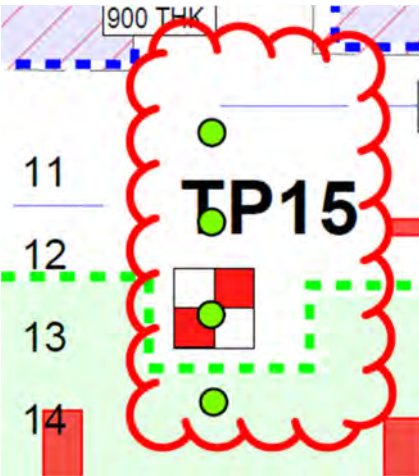
TP15 was broken out to a depth of 500 mm to determine the reinforcement. Any further was too laborious through solid concrete so cores were instead carried out. Cores carried out encountered 680mm – 780mm thick concrete. Reinforcement comprised B16@300mm/c, 100mm cover.



TP15 Photo



TP15 Trial Hole Locations



TP15 Core depths

Ref	Depth	Comments
11	780	To base of concrete
12	680	To base of concrete
13	700	To base of concrete
14	700	To base of concrete



Swanton Consulting Ltd
Erith House
Queen Street
Erith
Kent
DA8 1RP

Ref: 2354-DB01-P00

Page: 46

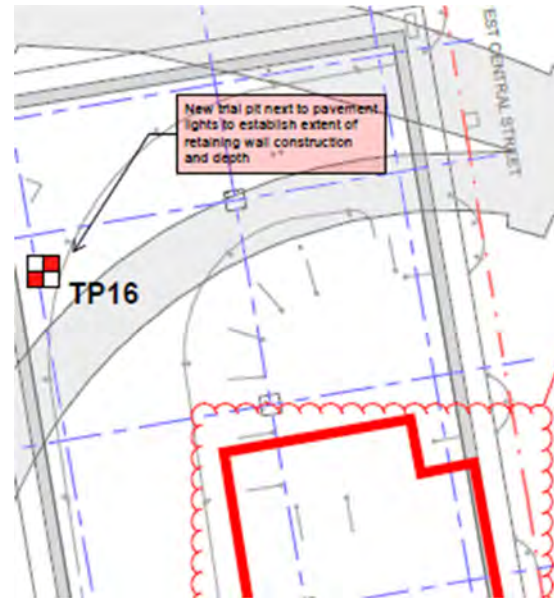
Project: 1 Museum Street

By: JL

Date: 17/11/2020

Title: Trial Pit Log

TP16 Location



Swanton Consulting Ltd
Erith House
Queen Street
Erith
Kent
DA8 1RP

Ref: 2354-DB01-P00

Page: 47

Project: 1 Museum Street

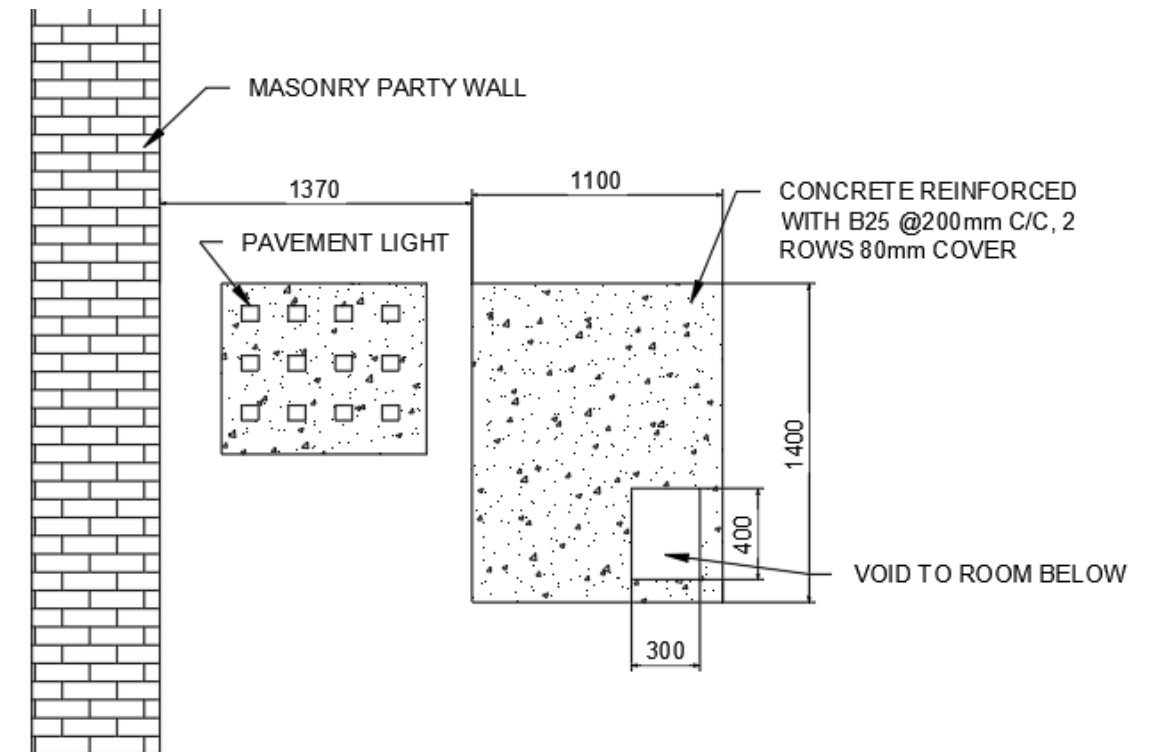
By: JL

Date: 17/11/2020

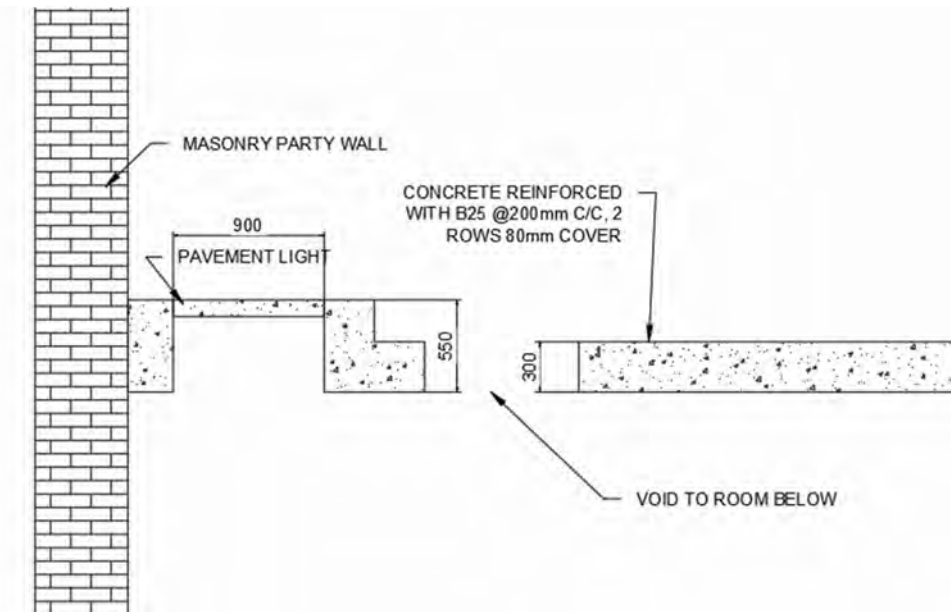
Title: Trial Pit Log

TP16 Plan view

TP16 was added to determine whether a room existed beneath the skylights in the corner of site. Further information will be added at a later date following further investigation.



TP16 Section



TP16 Photo





Swanton Consulting Ltd
Erith House
Queen Street
Erith
Kent
DA8 1RP

Ref: 2354-DB01-P00

Page: 50

Project: 1 Museum Street

By: JL

Date: 17/11/2020

Title: Trial Pit Log

