

Survey drawings are kindly provided by Mottorn Hughes Land Surveys Ltd and are assumed to accurately describe the existing buildings, services and external spaces.

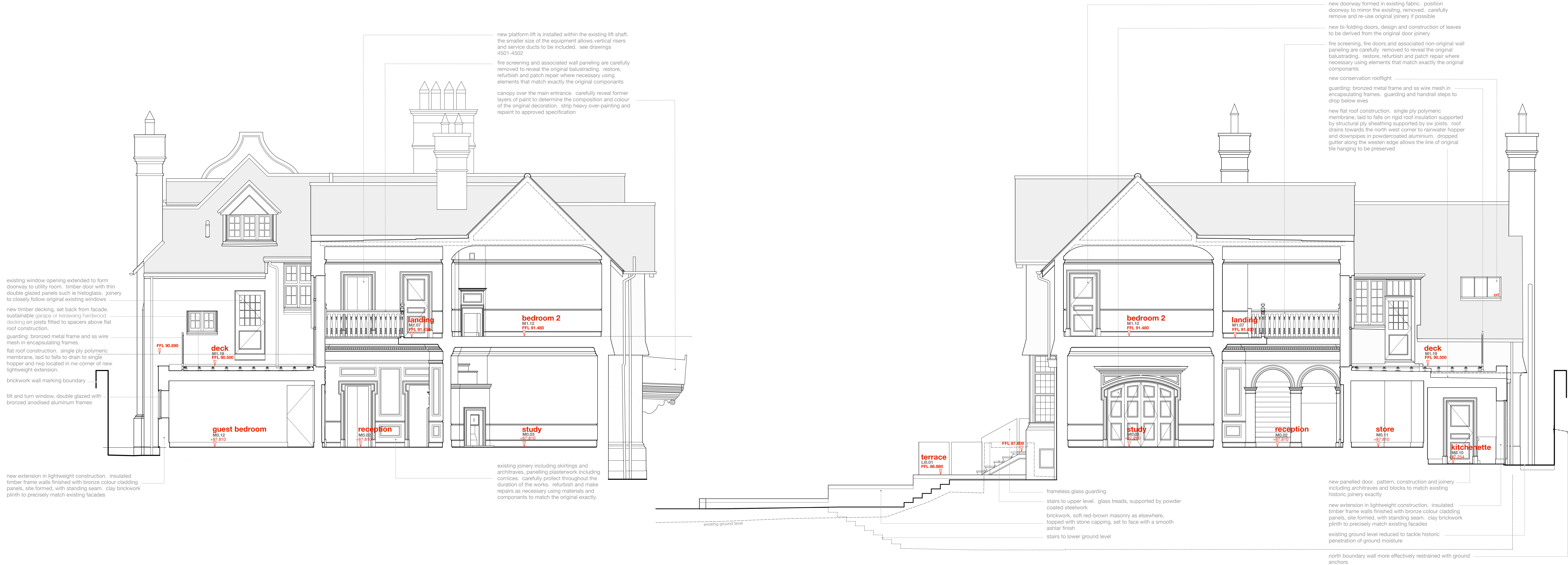
KEY

Areas to be demolished and removed.

Features

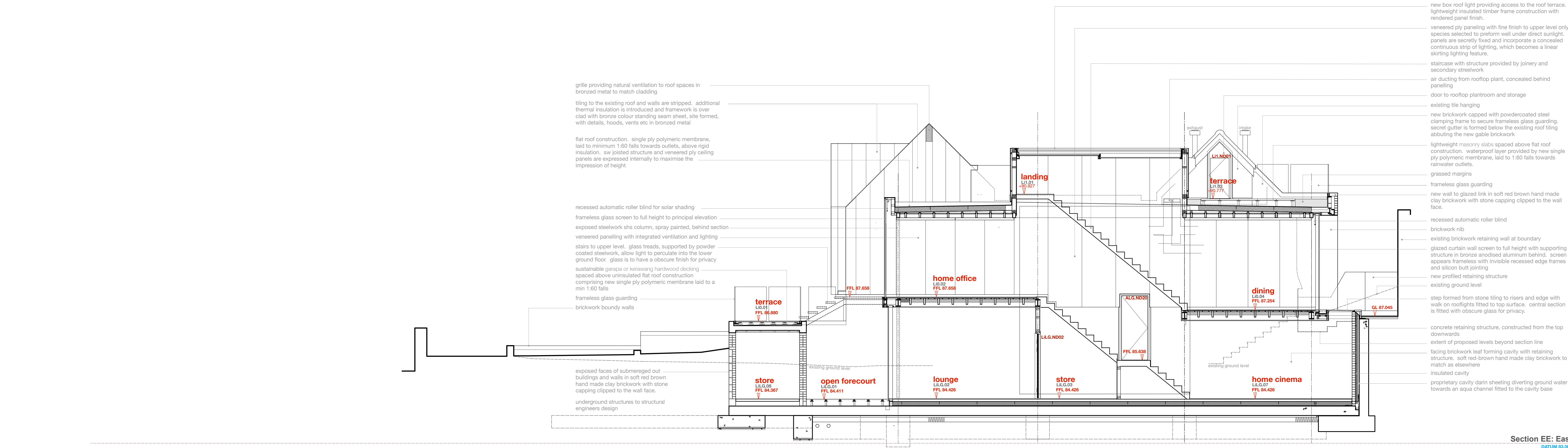
Windows

- bhc bottom hung timber casement window
- thc top hung timber casement window
- shc side hung casement
- vss vertical sliding sash timber window
- tt tilt and turn window
- fl fixed light timber window
- trl roof light (flat roof)
- vrl velux style roof light (pitched roof)
- ort conservation style roof light (gabled roof)
- h ceiling hatch
- sd sliding door
- pd pivot door
- r wall / roof mounted flue to gas boiler / gas fire, terminal colour is black
- abx extract terminal as air brick, such as rylons external, colour coded to suit brickwork
- frx mushroom extract terminal for flat roof
- prx fabricated lead pitched roof vent as extract terminal, such as provided by o'brien sheet lead (transoms kit)



Section CC: West

Section DD: East
DATUM BS.000



Section EE: East
DATUM BS.000

REV 18 14 Apr 2023 GSKC
Planning Approved Drawing marked with modifications to remove steel price and replace with ground anchors inserted to provide a more reliable method of stabilising the boundary wall structure. anchors are inserted from within the existing building owing to the very restricted working space in the alleyway.

REV A 05 Dec 2019 GSKC
Original Planning Application marked at Revision A

(REV) (DATE) (DRN) (CHKD)

PROJECT
The Hoo, Scheme 2
17 Lyndhurst Gardens,
Hampstead, London
Returning a Grand Victorian House to Private Domestic Accommodation NW3 SNU

CLIENT
Mr and Mrs Yu
REPRESENTED BY
JAGA Developments (London)

DRAWING
Sections CC-EE
as Approved

SCALE SHEET SIZE DRAWN CHECKED DATE
1:50 A0 GSKC GSKC Mar 2022

BOWKER SADLER ARCHITECTURE
A: Hatherlow House, Hatherlow, Romley, Stockport SK6 3DY
T: 0161 406 7333
E: info@bowker-sadler.co.uk
W: www.bowker-sadler.co.uk

JOB No. **19013** DRAWING No. **1451** REVISION **B**
STATUS
FOR PLANNING