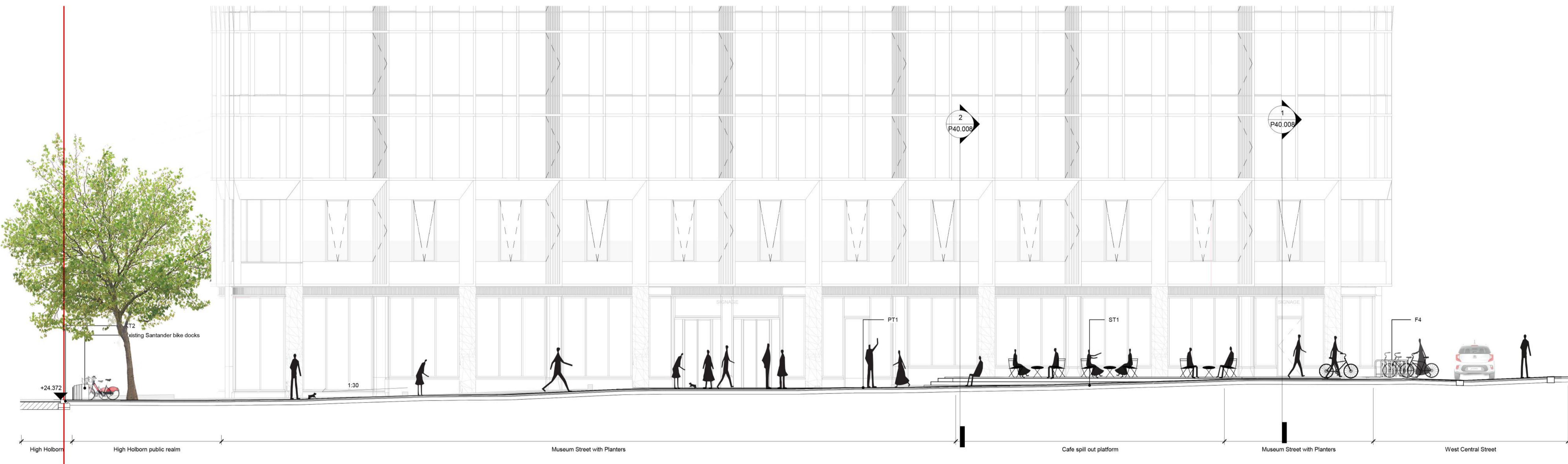




Public Realm - Proposed Site Section AA

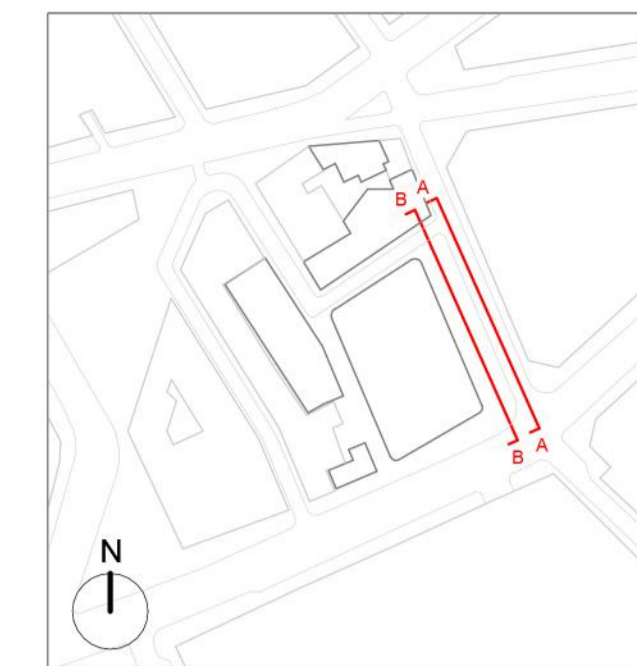
1 : 100



Public Realm - Proposed Site Section BB

1 : 100

NOTES



GENERAL NOTES:
 Areas are approximate and subject to change throughout planning, design and development of the proposals.
 Area measurement definitions have been taken from IPMS but area interpretations should be measured and verified by Quantity Surveyor
 - Planning Boundary shown is intended to align with proposed West End Project Kerb extents along High Holborn. Post-submission amendment to as-built kerb line may be required.
 - Museum Street landscape proposals are indicative only.
 - Existing public realm elements based on survey.
 - All dimensions to be verified on site before proceeding.
 - Plant layouts are indicative only.
 - All materials shown or highlighted are indicative only and may be subject to changes made during detailed design development.
 - Planning Boundary shown is intended to align with proposed West End Project Kerb extents along High Holborn, and is based on available information as submitted.

- PLANNING BOUNDARY
 - Furniture Types
 - F1 Bespoke Granite Benches to Museum Street
 - F1A Bespoke Granite Benches With Backrest
 - F1B Bespoke Granite Benches With Arm Rest And Backrest
 - F2 Plant pots OE60
 - F3 Plant pots OE90
 - F4 Short Stay Cycle Racks, Base plate fixed
 - F5 Santander Cycle Racks
 - F6 Tree Grille
 - F7 Bespoke Timber Benches to Vise Lane (450mm)
 - F8 Tree root cell
 - Indicative location for gates if required at late date
 - Existing trees to remain
 - Proposed trees
 - Soft Landscape planting - refer to BHSLA's drawing
- Refer to
 - Drawing P20.006 for Landscape GA Plan
 - Drawing P20.010 for Landscape Kerb type Plan
 - Drawing P20.011 for Landscape Levels and Drainage Plan
 - Drawing P20.012 for Landscape Furniture Plan
 Refer to Speirs and Major drawings and reports for lighting proposal

C	24.05.23	IM	Issued for Planning
B	01.02.23	IM	Issued for Planning Addendum
A	01.06.22	IM	Issued for Planning Addendum
-	22.03.21	CG	Issued for Planning

PLANNING

rev	date	author / check	comments
DSDHA			
357 Kennington Lane London SE11 5QY			
T 020 7703 3555			
F 020 7703 3890			
E info@dshda.co.uk			
W www.dshda.co.uk			

project
Museum Street and West Central Street
 London, WC1A 1JR
 drawing title

Proposed Site Sections AA / BB

drawn	size	date	scale
FSS	A1	22/03/21	As indicated
drawing number	revision		
295_P40.005	C		

REPORT DISCREPANCIES DO NOT SCALE FROM THIS DRAWING
 USE LATEST REVISION CHECK DIMENSIONS ON SITE
 COPYRIGHT DSDHA

