

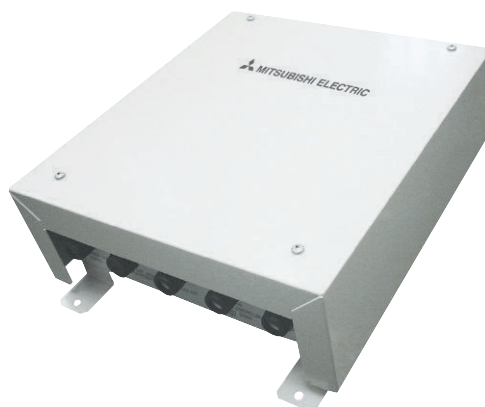
Air Conditioning

Making a
World of
Difference

Mr.SUM™

PAC-IF013B-E R32

Air Handling Unit Controller



Air Conditioning | Heating
Ventilation | Controls

R32





PUZ-ZM - OUTDOOR UNITS		PUZ-ZM35VKA2	PUZ-ZM50VKA2	PUZ-ZM60VHA2	PUZ-ZM71VHA2	PUZ-ZM100VKA2	PUZ-ZM125VKA2	PUZ-ZM140VKA2
SOUND PRESSURE LEVEL (dBA)	Heating/Cooling	46 / 44	46 / 44	49 / 47	49 / 47	51 / 49	52 / 50	52 / 50
SOUND POWER LEVEL (dBA)	Cooling	65	65	67	67	69	70	70
WEIGHT (kg)		46	46	70	70	116	116	118
DIMENSIONS (mm)	Width x Depth x Height	809 x 300 x 630	809 x 300 x 630	950 x 330 + 25 x 943	950 x 330 + 25 x 943	1050 x 330 + 40 x 1338	1050 x 330 + 40 x 1338	1050 x 330 + 40 x 1338
ELECTRICAL SUPPLY		220-240v, 50Hz	220-240v, 50Hz	220-240v, 50Hz	220-240v, 50Hz	220-240v, 50Hz	220-240v, 50Hz	220-240v, 50Hz
PHASE		Single	Single	Single	Single	Single	Single	Single
SYSTEM POWER INPUT (kW)	Heating/Cooling (nominal)	0.820 / 0.705	1.363 / 1.106	1.707 / 1.452	1.818 / 1.651	2.804 / 2.065	3.674 / 3.378	4.312 / 3.772
	Heating/Cooling (UK)	0.73 / 0.59	1.21 / 0.94	1.43 / 1.15	1.61 / 1.39	2.09 / 1.77	3.27 / 2.87	3.89 / 3.15
STARTING CURRENT (A)		4.3	4.3	5.3	5.3	10.7	13.2	13.2
SYSTEM RUNNING CURRENT (A)	Heating/Cooling [MAX]	3.89 / 3.51 [13.2]	6.05 / 5.00 [13.2]	7.39 / 6.31 [19.2]	7.79 / 7.06 [19.3]	11.25 / 6.97 [27.0]	15.77 / 14.53 [27.0]	18.41 / 15.88 [28.7]
FUSE RATING (BS88) - HRC (A)		16	16	25	25	32	32	40
MAINS CABLE NO. CORES		3	3	3	3	3	3	3
MAX PIPE LENGTH (m)		50	50	55	55	100	100	100
MAX HEIGHT DIFFERENCE (m)		30	30	30	30	30	30	30
CHARGE REFRIGERANT (kg) / CO ₂ EQUIVALENT (t)	R32 (GWP 675)	2.00 / 1.35 (30m)	2.00 / 1.35 (30m)	2.80 / 1.89 (30m)	2.80 / 1.89 (30m)	3.60 / 2.43 (40m)	3.60 / 2.43 (40m)	3.60 / 2.43 (40m)
MAX ADDITIONAL REFRIGERANT (kg) / CO ₂ EQUIVALENT (t)	R32 (GWP 675)	0.30 / 0.20	0.30 / 0.20	0.80 / 0.54	0.80 / 0.54	2.40 / 1.62	2.40 / 1.62	2.40 / 1.62

GF unit



Telephone: 01707 282880

email: air.conditioning@meuk.mee.com

web: airconditioning.mitsubishielectric.co.uk microsite: timeforR32.co.uk

UNITED KINGDOM Mitsubishi Electric Europe Living Environment Systems Division

Travellers Lane, Hatfield, Hertfordshire, AL10 8XB, England General Enquiries Telephone: 01707 282880 Fax: 01707 278881

IRELAND Mitsubishi Electric Europe Westgate Business Park, Ballymount, Dublin 24, Ireland

Telephone: Dublin (01) 419 8800 Fax: Dublin (01) 419 8890 International code: (003531)

Courtesy of origin: United Kingdom - Japan - Thailand - Malaysia. ©Mitsubishi Electric Europe 2017. Mitsubishi and Mitsubishi Electric are trademarks of Mitsubishi Electric Europe B.V. The company reserves the right to make any variation in technical specification to the equipment described, or to withdraw or replace products without prior notification or public announcement. Mitsubishi Electric is constantly developing and improving its products. All descriptions, illustrations, drawings and specifications in this publication present only general particulars and shall not form part of any contract. All goods are supplied subject to the Company's General Conditions of Sale, a copy of which is available on request. Third-party product and brand names may be trademarks or registered trademarks of their respective owners.

Note: The fuse rating is for guidance only. Please refer to the relevant databook for detailed specification. It is the responsibility of a qualified electrician/electrical engineer to select the correct cable size and fuse rating based on current regulation and site specific conditions. Mitsubishi Electric's air conditioning equipment and heat pump systems contain a fluorinated greenhouse gas, R410A (GWP:2088), R32 (GWP:675), R407C (GWP:1774) or R134a (GWP:1430). *These GWP values are based on Regulation(EU) No 517/2014 from IPCC 4th edition. In case of Regulation(EU) No.626/2011 from IPCC 3rd edition, these are as follows. R410A (GWP:1975), R32 (GWP: 550), R407C (GWP:1650) or R134a (GWP:1300).



www.greengateway.mitsubishielectric.co.uk

Mitsubishi Electric UK's commitment to the environment



Follow us @meuk_Jes
Follow us @green_gateway



Mitsubishi Electric
Living Environmental Systems UK



[mitsubishielectric2](https://www.youtube.com/mitsubishielectric2)

Effective as of May 2017

