

Rev	Description	Drawn	Checked	Approved	Con App	Scale with caution as distortion can occur.
P1.1	Initial Issue	GR	JSN	APB		
P1.2	Site location amended Cycle parking relocated Scale bar and North added to legend.	GR	JSN	APB		
C01	Contract Issue	GR	JSN	APB		
C02	Cycle store removed	GR	JSN	APB		

Legends/Notes:

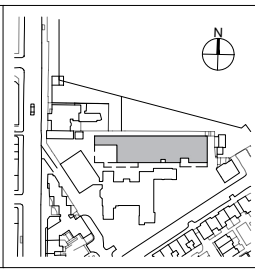
- New boundary fences
- ||||| Existing boundary
- Hoarding / Construction site varies over phase/ time

© Crown Copyright and database right 2020. All rights reserved.
Ordnance Survey Licence number 100049190

© Crown Copyright material is reproduced with the permission of Land Registry under delegated authority from the Controller of HMSO.

This material was last updated on 2020 and may not be copied, distributed, sold or published without the formal permission of Land Registry. Only an official copy of a title plan or register obtained from the Land Registry may be used for legal or other official purposes.

HS2 accepts no responsibility for any circumstances which arise from the reproduction of this document after alteration, amendment or abbreviation or if it is issued in part or issued incompletely in any way.



HS2

OFFICIAL

Registered in England
Registration No. 06791686
Registered office:
2 Snow Hill, Queensway,
Birmingham, B4 6GA

Project/Contract		Creator/Originator		Sub-Originator	
Proposed Maria Fidelis CSC & Site Accommodation, London, NW1 2HR 1CP01		MDS		FBM	
Zone	Work Package Description	Discipline/Function		System Description	
SS08	SL23	AR		DSP	
Drawing Title		Drawn by	Checked by	Approved by	Date
Proposed Site Plan		GR	JSN	APB	27/07/2022
Scale	Size	Stage	Suitability		
1:500	A3	3	C		
Drawing No.					Rev.
1CP01-MDS_FBM-AR-DSP-SS08_SL23_GF-000004					C02