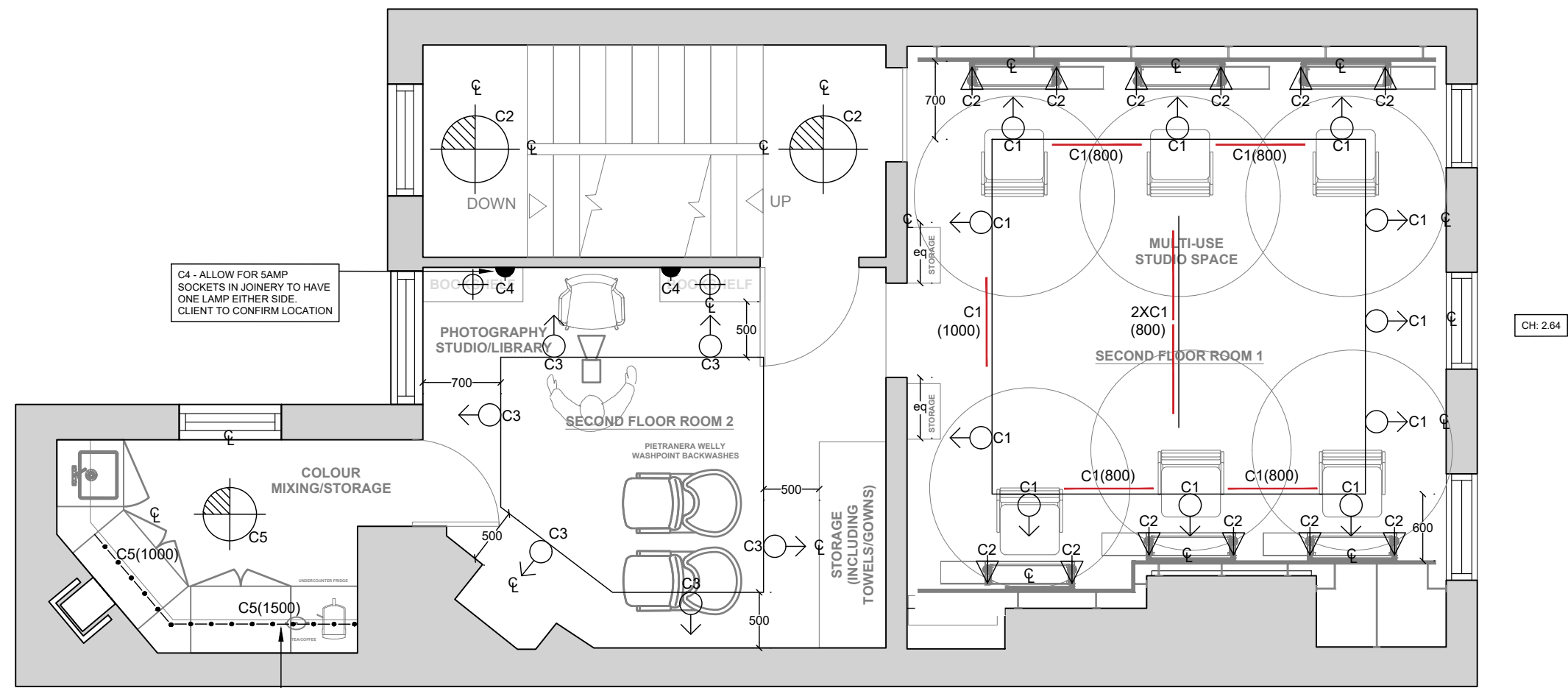
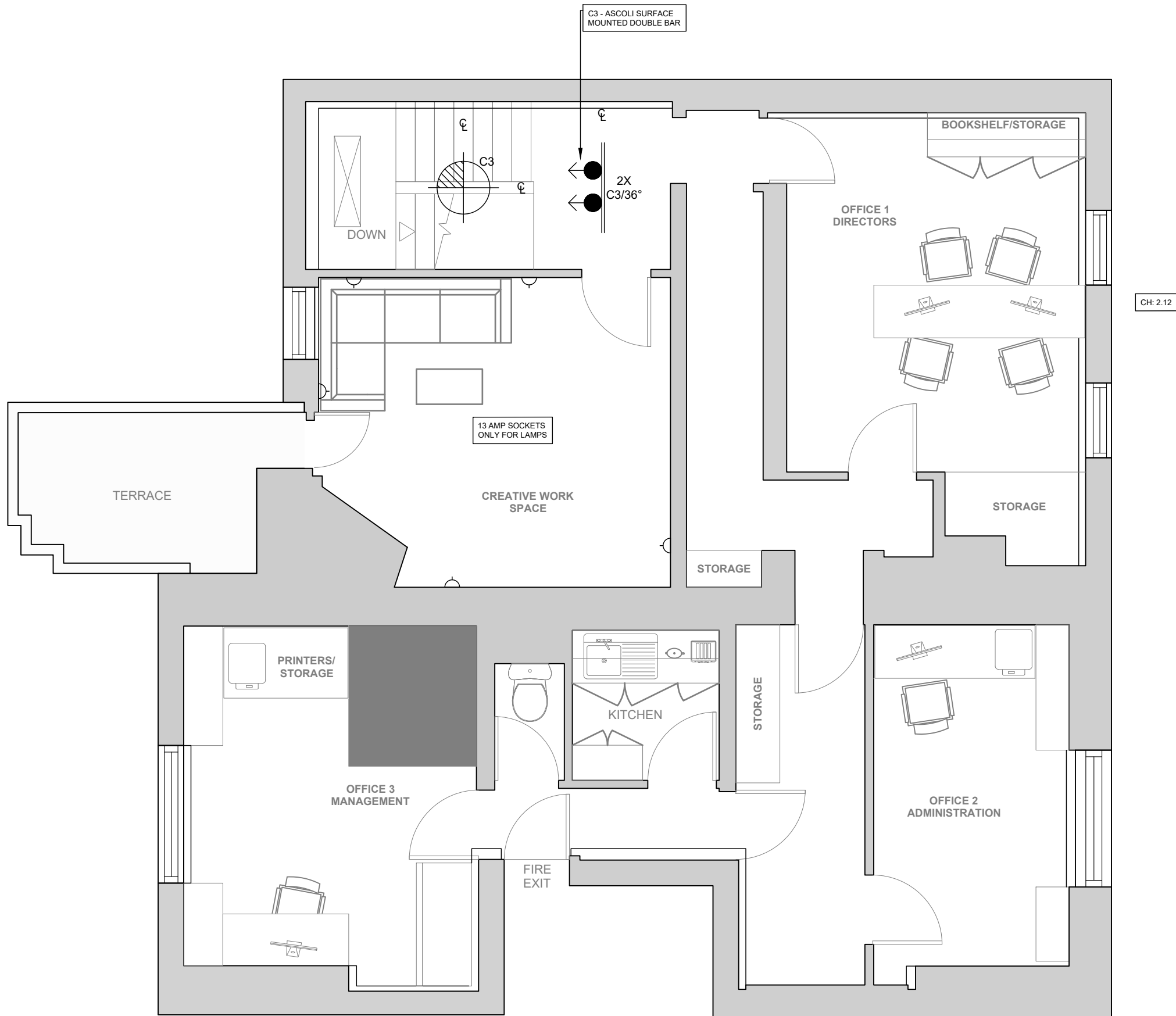


FIRST FLOOR



SECOND FLOOR



THIRD FLOOR

KEY

- Ceiling recessed**
9.5w 230v GU10 Corona Pro Max 5186 (set at full tilt) with fire hood ring- (for use with Soraa Vivid lamps) white Superlites
- 9.5w 230v GU10 E026 Fire Contract Spot (for use with 2700K Osram lamp)
- As above as a downlight
- Surface mounted track + track fittings**
12.4w 48VDC Spy 52 spot 92745 MDLB Black/White 2700K Delta Light
- (800) 11.6w 48vDC M-Inform L892762 MDLB Black/White 2700K (800mm) Delta Light
- (1000) 16.6w 48vDC M-Inform L11 92767 MDLB Black/White 2700K (1114mm) Delta Light
- Track SLM 26H Profile in Black/White Delta Light
- Surface mounted**
9.5w 230v GU10 Ascoli single surface mounted spot (for use with Soraa lamp or Osram lamp for basement) 1286001 white Astro Lighting
- 2 x 9.5w 230v GU10 Ascoli Twin on bar surface mounted fitting (for use with Soraa lamp) 1286034 white Astro Lighting
- Linear LED**
10w 24v Linear LED 2700K set in extrusion 'A' with frosted cover TP FL 10W BA 27K 24V Superlites
- Exterior Lighting**
10w 230v Skyline Vista LED Floodlight 2700K IP65 black Bell Lighting
- Decorative**
7w 230v Sphere III Tala Bulb Pendant (for workstations) B&B to confirm flex and cap required
- 4w 230v Wall Light
- 60w-100w 230v Pendant
- 3 x 12w 230v Salina 550 surface mounted fitting with putty shade Astro Lighting
- 40w 230v Table Lamp
- 60w 230v Floor Lamp
- Misc**
40w 230b Bulkhead - **by contractor**
- Control**
All control by electrical contractor on PIR on/off only
- Small power**
5 amp socket for lamps
- Setting out**
Distance off
Equal distance
Centre line
Circuit number

Lamps
Soraa Vivid GU10 9.5w 230v 2700K 36 degree - 01977
Soraa Vivid GU10 9.5w 230v 2700K 60 degree - 01985
Osram Parathom GU10 9.5w 230v 2700K 36 degrees - Ppro Par16 80 36 9.5w/2700K

Notes
DO NOT SCALE.
Any changes to be notified to LIGHT FANTASTIC.
All recessed lights (Corona Pro Max) **to be left at full tilt in the direction as shown on plan.**
Chamfering may be required.
Where fittings relevant to furniture layout, client/architect to confirm location.
Client to confirm the location of all small power sockets.
All control by electrical contractor.
All emergency lighting by electrical contractor.

LIGHT FANTASTIC

46 DYMOCK STREET | LONDON | SW6 3HA
07768 006 690 | LUCY.MARTIN@LIGHTNOW.IN

Client: Brooks & Brooks
Project: 28/29 Great Queen Street, London, WC2B 5BB
Drawing: FIRST, SECOND, & THIRD FLOOR LIGHTING PLANS

Designer: Lucy Martin
First Issue: 28th April 2023
Revision:
Scale: 1:50@A1 - DO NOT SCALE