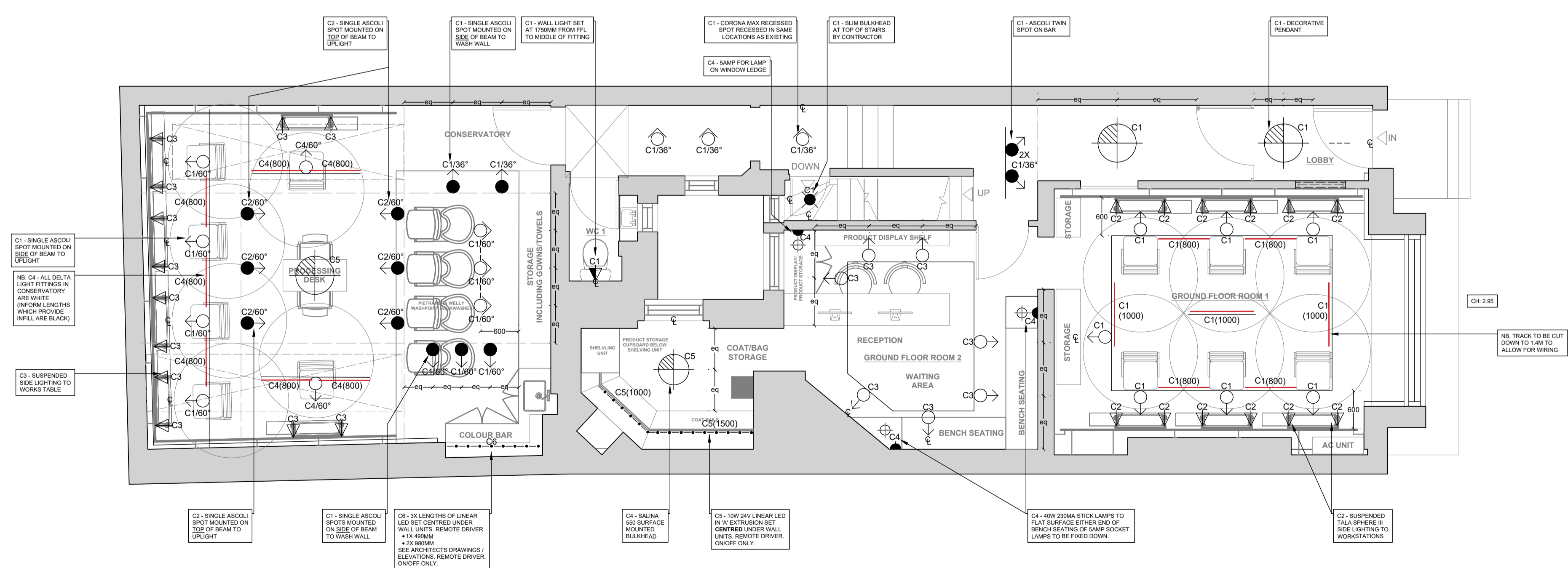


BASEMENT



GROUND FLOOR

- KEY**
- Ceiling recessed**
9.5w 230v GU10 Corona Pro Max 5186 (set at full tilt) with fire hood ring- (for use with Soraa Vivid lamps) white Superlites
 - 9.5w 230v GU10 E026 Fire Contract Spot (for use with 2700K Osram lamp)
 - As above as a downlight
 - Surface mounted track + track fittings**
12.4w 48VDC Spy 52 spot 92745 MDLB Black/White 2700K Delta Light
 - (800) 11.6w 48vDC M-Inform L892762 MDLB Black/White 2700K (800mm) Delta Light
 - (1000) 16.6w 48vDC M-Inform L11 92767 MDLB Black/White 2700K (1114mm) Delta Light
 - Track SLM 26H Profile in Black/White Delta Light
 - Surface mounted**
9.5w 230v GU10 Ascoli single surface mounted spot (for use with Soraa lamp or Osram lamp for basement) 1286001 white Astro Lighting
 - 2 x 9.5w 230v GU10 Ascoli Twin on bar surface mounted fitting (for use with Soraa lamp) 1286034 white Astro Lighting
 - Linear LED**
10w 24v Linear LED 2700K set in extrusion 'A' with frosted cover TP FL 10W BA 27K 24V Superlites
 - Exterior Lighting**
10w 230v Skyline Vista LED Floodlight 2700K IP65 black Bell Lighting
 - Decorative**
7w 230v Sphere III Tala Bulb Pendant (for workstations) B&B to confirm flex and cap required
 - 4w 230v Wall Light
 - 60w-100w 230v Pendant
 - 3 x 12w 230v Salina 550 surface mounted fitting with putty shade Astro Lighting
 - 40w 230v Table Lamp
 - 60w 230v Floor Lamp
 - Misc**
40w 230b Bulkhead - by contractor
 - Control**
All control by electrical contractor on PIR on/off only
 - Small power**
5 amp socket for lamps
 - Setting out**
Distance off
Equal distance
Centre line
Circuit number
 - Lamps**
Soraa Vivid GU10 9.5w 230v 2700K 36 degree - 01977
Soraa Vivid GU10 9.5w 230v 2700K 60 degree - 01985
Osram Parathom GU10 9.5w 230v 2700K 36 degrees - Ppro Par16 80 36 9.5w/2700K

Notes
DO NOT SCALE.
Any changes to be notified to LIGHT FANTASTIC.
All recessed lights (Corona Pro Max) to be left at full tilt in the direction as shown on plan. Chamfering may be required.
Where fittings relevant to furniture layout, client/architect to confirm location.
Client to confirm the location of all small power sockets.
All control by electrical contractor.
All emergency lighting by electrical contractor.

LIGHT FANTASTIC
46 DYMOCK STREET | LONDON | SW6 3HA
07768 006 690 | LUCY.MARTIN@LIGHTNOW.IN

Client: Brooks & Brooks
Project: 28/29 Great Queen Street, London, WC2B 5BB
Drawing: BASEMENT & GROUND FLOOR LIGHTING PLANS

Designer: Lucy Martin
First Issue: 28th April 2023
Revision:
Scale: 1:50@A1 - DO NOT SCALE