

APT_Type_AV-A (2 BED 4 PERSON)				
Number	Level	Name	Min Req.	Area

Aspen Villas 00 Ground Floor

AV_005_001	Aspen Villas 00 Ground Floor	Corridor		10.8 m ²
AV_005_002	Aspen Villas 00 Ground Floor	Bathroom		5.5 m ²
AV_005_003	Aspen Villas 00 Ground Floor	Bedroom 1 (Principal)	13.5 m ²	14.2 m ²
AV_005_004	Aspen Villas 00 Ground Floor	Kitchen/Living/Dining	29.0 m ²	29.0 m ²
AV_005_005	Aspen Villas 00 Ground Floor	Bedroom 2 (Twin)	12.5 m ²	13.1 m ²
AV_005_006	Aspen Villas 00 Ground Floor	Utility		1.3 m ²

Aspen Villas 01 First Floor

AV_106_001	Aspen Villas 01 First Floor	Corridor		10.8 m ²
AV_106_002	Aspen Villas 01 First Floor	Bathroom		5.5 m ²
AV_106_003	Aspen Villas 01 First Floor	Bedroom 1 (Principal)	13.5 m ²	14.2 m ²
AV_106_004	Aspen Villas 01 First Floor	Kitchen/Living/Dining	29.0 m ²	29.0 m ²
AV_106_005	Aspen Villas 01 First Floor	Bedroom 2 (Twin)	12.5 m ²	13.1 m ²
AV_106_006	Aspen Villas 01 First Floor	Utility		1.3 m ²

APT_Type_AV-A_H (2 BED 4 PERSON)				
Number	Level	Name	Min Req.	Area

Aspen Villas 00 Ground Floor

AV_001_001	Aspen Villas 00 Ground Floor	Hall		10.8 m ²
AV_001_002	Aspen Villas 00 Ground Floor	Utility		1.3 m ²
AV_001_003	Aspen Villas 00 Ground Floor	Bedroom 2 (Twin)	12.5 m ²	13.1 m ²
AV_001_004	Aspen Villas 00 Ground Floor	Kitchen/Living/Dining	29.0 m ²	29.1 m ²
AV_001_005	Aspen Villas 00 Ground Floor	Bedroom 1 (Principal)	13.5 m ²	14.3 m ²
AV_001_006	Aspen Villas 00 Ground Floor	Bathroom		5.5 m ²

Aspen Villas 01 First Floor

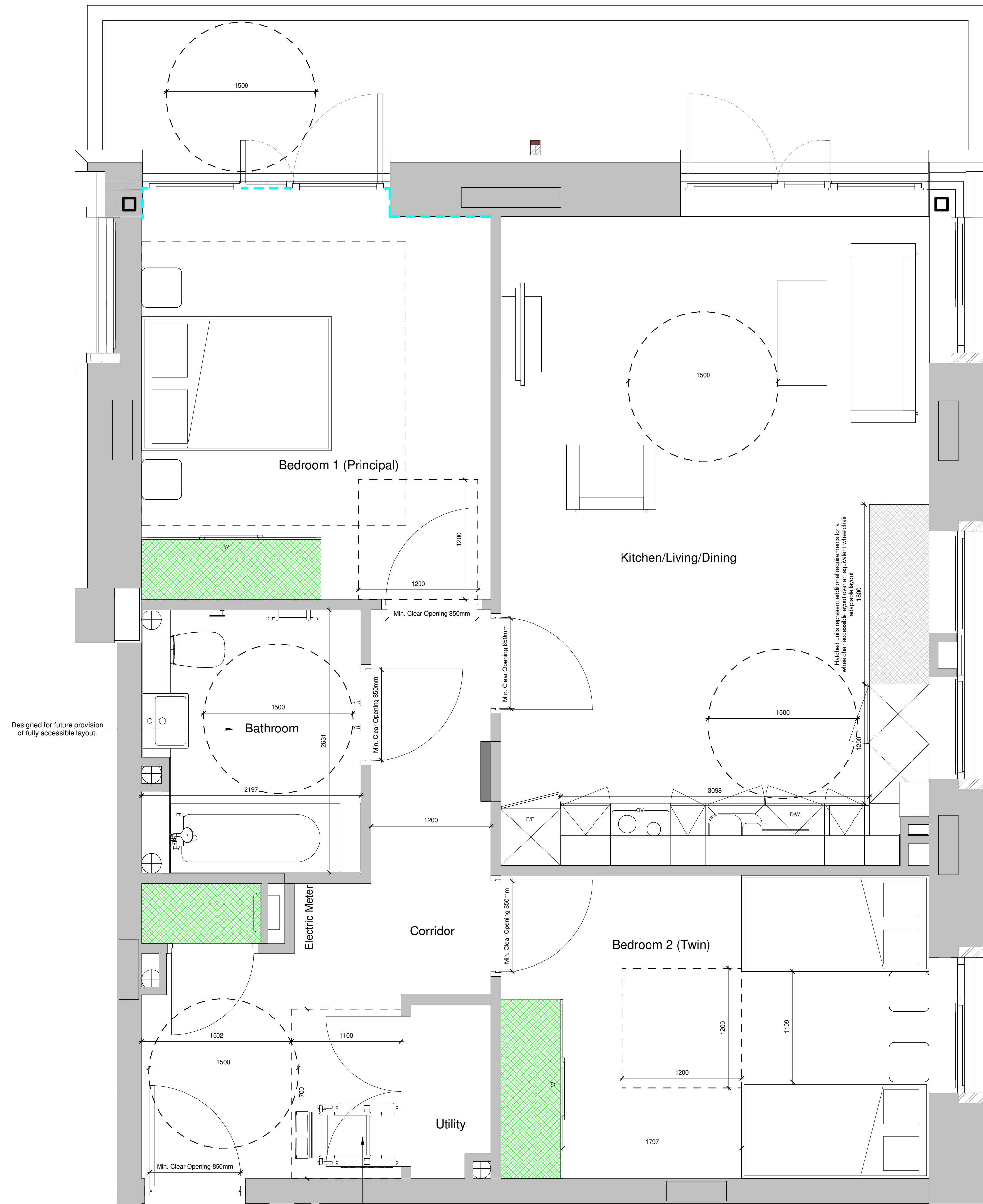
AV_101_001	Aspen Villas 01 First Floor	Corridor		10.8 m ²
AV_101_002	Aspen Villas 01 First Floor	Utility		1.3 m ²
AV_101_003	Aspen Villas 01 First Floor	Bedroom 2 (Twin)	12.5 m ²	13.1 m ²
AV_101_004	Aspen Villas 01 First Floor	Kitchen/Living/Dining	29.0 m ²	29.0 m ²
AV_101_005	Aspen Villas 01 First Floor	Bedroom 1 (Principal)	13.5 m ²	14.2 m ²
AV_101_006	Aspen Villas 01 First Floor	Bathroom		5.5 m ²

Built in Storage:
 Minimum requirement: 2.0m²
 Area: 2.9m²

Notes on Approved Document M
 Wheelchair adaptable flats designed in accordance with Approved Document M: access to and use of buildings, volume 1: dwellings

Wheelchair adaptable.
 Category 3 dwelling constructed with the potential to be adapted for occupation by a wheelchair user where optional requirement M4(3)(2)(a) applies.

- Kitchen layout designed in accordance with 3.32 - 3.34
- Sanitary facilities designed in accordance with 3.36 - 3.43
- Structural floors throughout the flats are concrete slab, suitable to support the provision of 3.35 c. & 3.36 e. to allow for the fitting of an overhead hoist capable of carrying a load of 200kg
- All internal and external doors to have a level threshold



1 APT_Type_AV-A
 1 : 25

Future location of wheelchair storage and transfer space. Power socket is within this space

STATUS	REV	DATE	DESCRIPTION	DSG	DRW	CHK	APP
S4	C03	24/05/23	S4 - For Stage Approval	EC			AB
S4	C02	15/10/21	S4 - For Stage Approval	EC			AB
S4	C01	22/04/21	S4 - For Stage Approval	EC			AB
S3	P02	09/10/20	S3 - For Review and Comments	EC			AB
S3	P01	28/05/20	S3 - For Review & Comments	EC			AB

MAIN CONTRACTOR

Bouygues UK
 Becket House
 1 Lambeth Palace Rd
 Lambeth, London SE1 7EU
 Tel: 020 7401 0020

CLIENT LOGO

KEY PLAN

ORIGINATOR

Westworks, Golden Square
 100 Broad Street, London W1P 3LP
 020 7593 4000
 www.westworks.co.uk

PROJECT NAME: Maitland Park Redevelopment

DRAWING TITLE: Aspen Villas - Apartment Types - APT_Type_AV-A

PROJECT	ORIGINATOR	VOLUME	LEVEL	TYPE	ROLE	NUMBER	REV
MPR	ECE	AV	ZZ	GA	A	002050	C03