

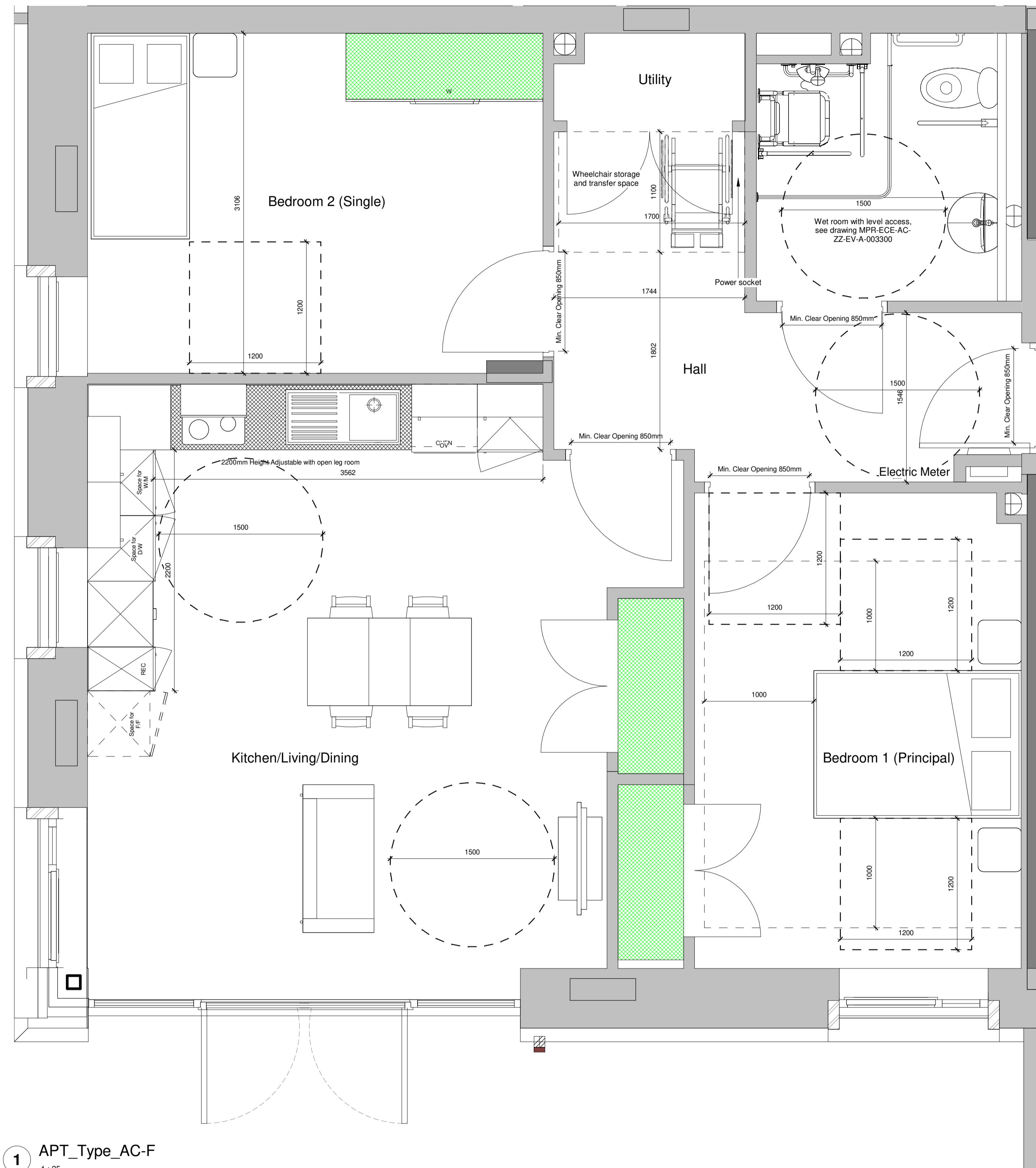
APT_Type_AC-F (2 BED 3 PERSON)					
Number	Level	Name	Min Req.	Area	
Aspen Court 00 Ground Floor					
AC_004_001	Aspen Court 00 Ground Floor	Hall		9.0 m ²	
AC_004_002	Aspen Court 00 Ground Floor	Bedroom 1 (Principal)	13.5 m ²	14.2 m ²	
AC_004_003	Aspen Court 00 Ground Floor	Kitchen/Living/Dining	27.0 m ²	27.0 m ²	
AC_004_004	Aspen Court 00 Ground Floor	Bedroom 2 (Single)	8.5 m ²	13.0 m ²	
AC_004_005	Aspen Court 00 Ground Floor	Utility		1.3 m ²	
AC_004_006	Aspen Court 00 Ground Floor	Bathroom		5.1 m ²	

Built in Storage:
 Minimum requirement: 2.0m²
 Area: 3.0m²

Notes on Approved Document M
 Wheelchair accessible flats designed in accordance with Approved Document M: access to and use of buildings, volume 1: dwellings

Wheelchair accessible.
 Category 3 dwelling constructed to be suitable for immediate occupation by a wheelchair user where the planning authority specifies that optional requirement M4(3)(2)(b) applies.

- Kitchen layout designed in accordance with 3.32 - 3.34
- Sanitary facilities designed in accordance with 3.36 - 3.43
- Structural floors throughout the flats are concrete slab, suitable to support the provision of 3.35 c. & 3.36 e. to allow for the fitting of an overhead hoist capable of carrying a load of 200kg
- All internal and external doors to have a level threshold




1 APT_Type_AC-F
 1:25

STATUS	REV	DATE	DESCRIPTION	DSG	DRW	CHK	APP
S4	C03	24/05/23	S4 - For Stage Approval	EC			AB
S4	C02	15/10/21	S4 - For Stage Approval	EC			AB
S4	C01	22/04/21	S4 - For Stage Approval	EC			AB
S3	P02	08/10/20	S3 - For Review and Comments	EC			AB
S3	P01	28/05/20	S3 - For Review and Comments	EC			AB

ALL REVISIONS	STATUS	REV	DATE	DESCRIPTION	DSG	DRW	CHK	APP
S4	C03	24/05/23	S4 - For Stage Approval	EC				AB
S4	C02	15/10/21	S4 - For Stage Approval	EC				AB
S4	C01	22/04/21	S4 - For Stage Approval	EC				AB
S3	P02	08/10/20	S3 - For Review and Comments	EC				AB
S3	P01	28/05/20	S3 - For Review and Comments	EC				AB

MAIN CONTRACTOR

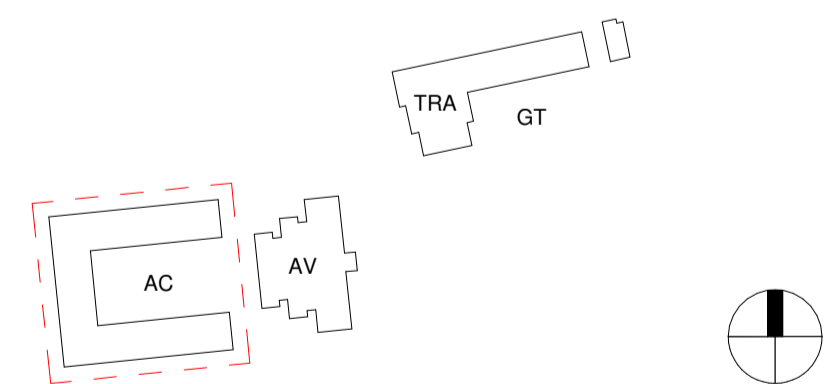


Bouygues UK
 Becket House
 1 Lambeth Palace Rd
 Lambeth, London SE1 7EU
 Tel: 020 7401 0020

CLIENT LOGO



KEY PLAN



ORIGINATOR



Westworks, Golden Square
 100 Victoria Street, London W1J 0BJ
 020 7598 7000
 www.westworks.co.uk

PROJECT NAME: Maitland Park Redevelopment

DRAWING TITLE: Aspen Court - Apartment Types - APT_Type_AC-F

SCALE @ A1	MODEL FILE NAME - REVISION	
As indicated	MPR-ECE-AC-ZZ-M3-A-000101 - P68	
FIRST ISSUE DATE	PROJECT STAGE	STATUS CODE
28/05/20	Stage 5	S4 - For Stage Approval

PROJECT	ORIGINATOR	VOLUME	LEVEL	TYPE	ROLE	NUMBER	REV
MPR	ECE	AC	ZZ	GA	A	002055	C03