

Condition 8: Waste & Recycling

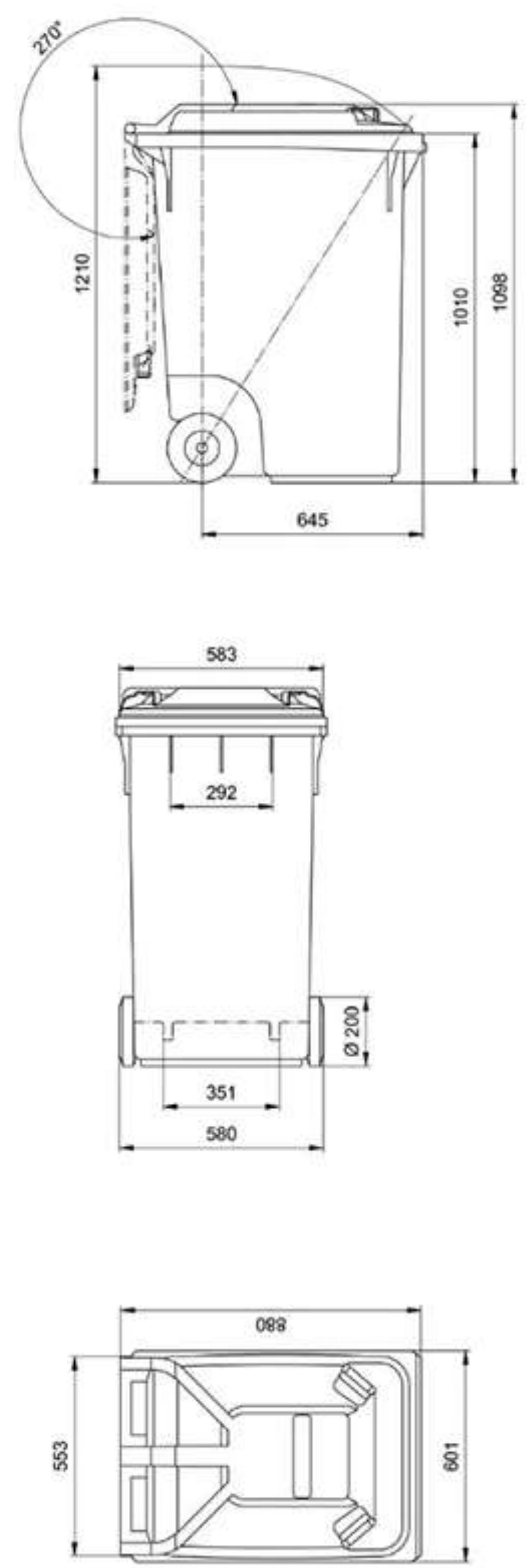
Bin Provision:
3no bins will be stored in the East garden area.

General Waste: (1)
Black Bin: General waste

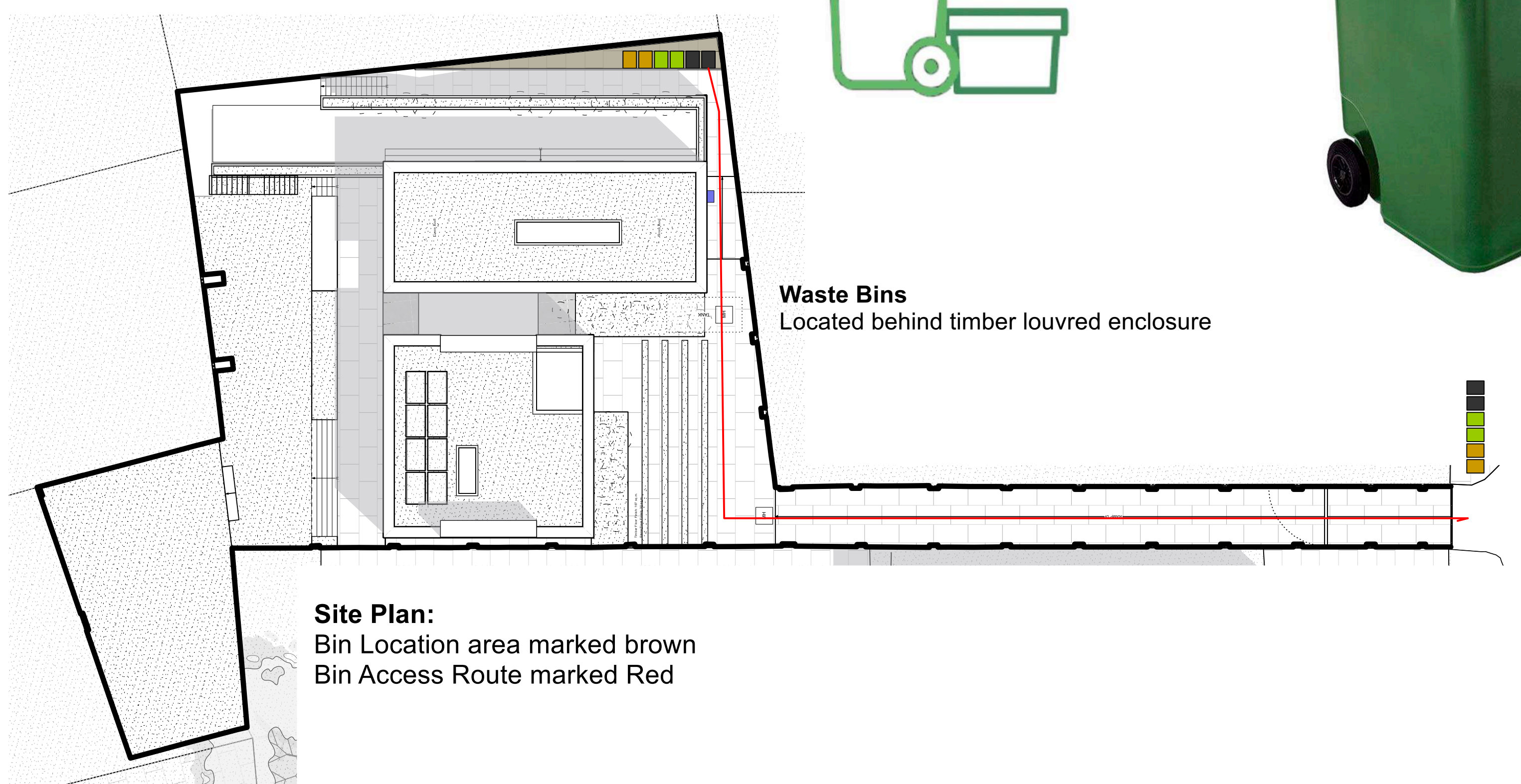
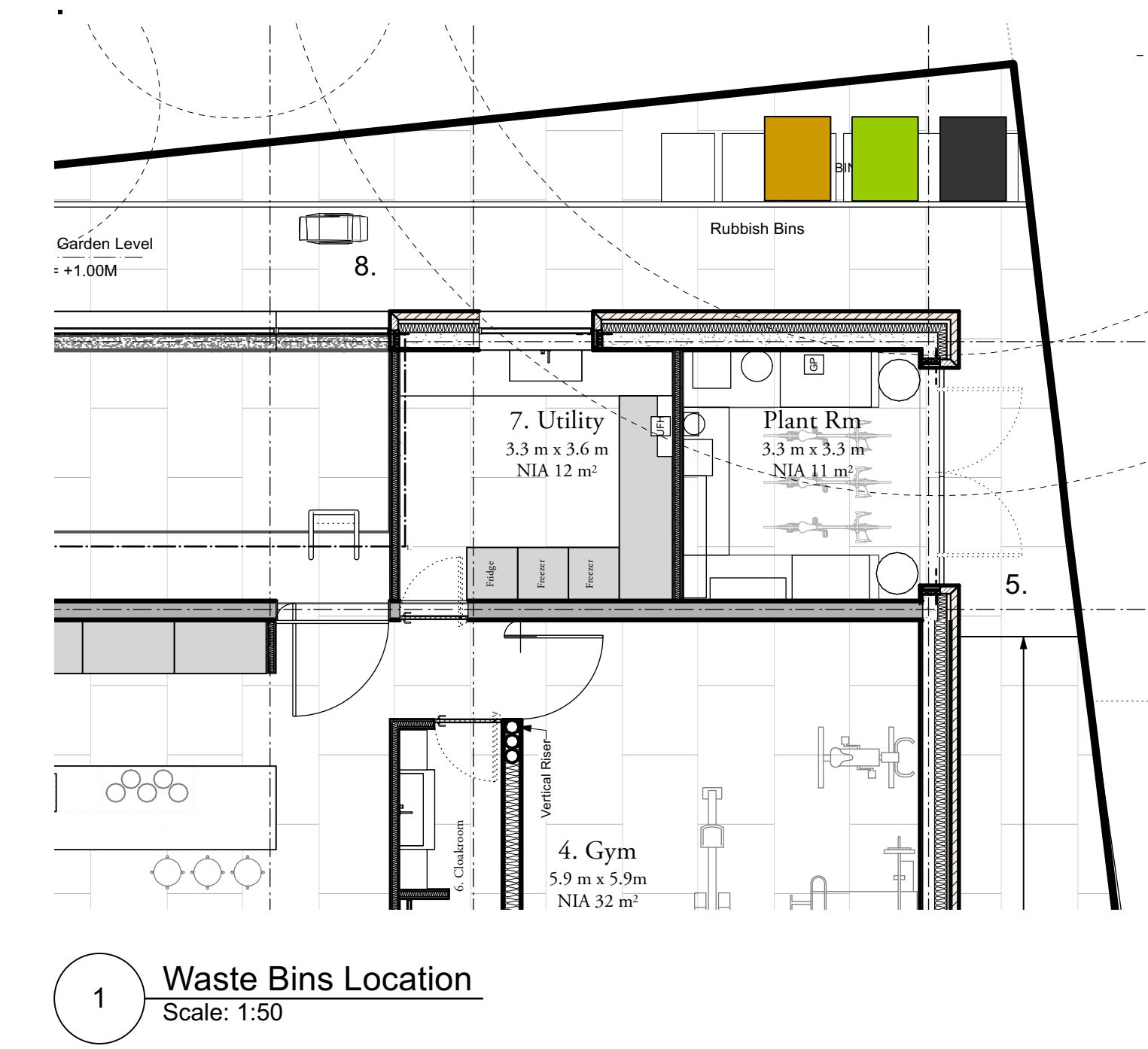
Recycling: (2)
Green Bin: Recycling
Plastic– including bottles, pots, tubs, cartons and carrier bags (empty and untied)
Paper – including newspapers, magazines and letters
Cardboard – including cereal and egg boxes
Metal – including tins, cans, aerosols, aluminium foil and bottle tops
Glass – including bottles and jars

Food Waste: (3)
Brown Bin, Food waste.
Fruit, vegetables, meat, fish, bones, tea bags, coffee grounds, bread, pastries, dairy products, rice, pasta, beans, eggs, eggshells, cooked food, leftover food & otehr genral Food Waste

Collection:
The bins will be taken to the kerb side pick up point every Monday morning ready for collection.
Red line indicates the route from storage area to the kerb side location ready for collection



Bin Storage:
Bins within timber enclosure



Site Plan:
Bin Location area marked brown
Bin Access Route marked Red

Waste & Recycling Details