



Fig. 2.9 - Consented View - Along Charlotte Street

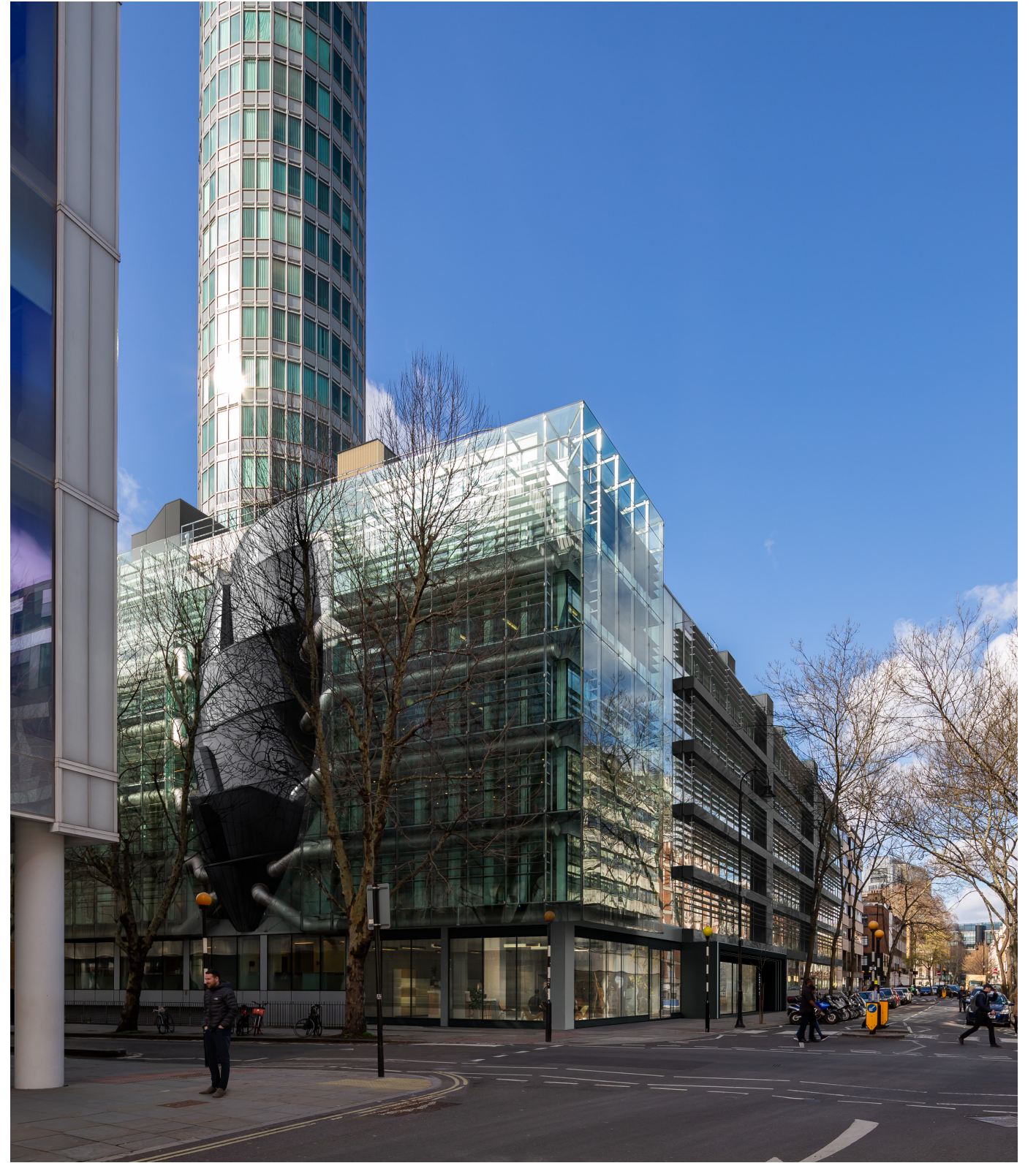


Fig. 2.10 - Proposed View - Along Charlotte Street

4.0 Clarifications

4.1 Clarification on the content of this submission

This section has been added to clarify any queries that may be raised following a review of this submission.

There is a minor inconsistency between the consented and proposed elevations, how the stainless steel ventilation ductworks are shown on the facade (for reference see Fig 4.1, 4.2 and 4.3). This minor inconsistency is due to a lack of detailed survey information available at the time of drawing the existing and consented elevations. During the design development, a tri-dimensional survey was commissioned by the client. Once we were provided with this detailed survey information, we were in position to more accurately design the shape and location of the stainless steel ventilation ductwork on the facade.

As stated on the paragraph 2.4, the design intention has always been to re-use and re-connect the existing stainless steel facade ventilation ductwork to the new “bug”.

To clearly demonstrate that, the following page incorporates the existing, consented and proposed elevations, which highlight the relevant ductwork in question. The next page also incorporates comparison between the existing photograph along Charlotte Street (Fig. 4.4), consented view (Fig. 4.5) and proposed view (Fig. 4.6) showing that the ductwork is kept as per existing.

Existing stainless steel ventilation ductworks,
showed as per existing survey available.

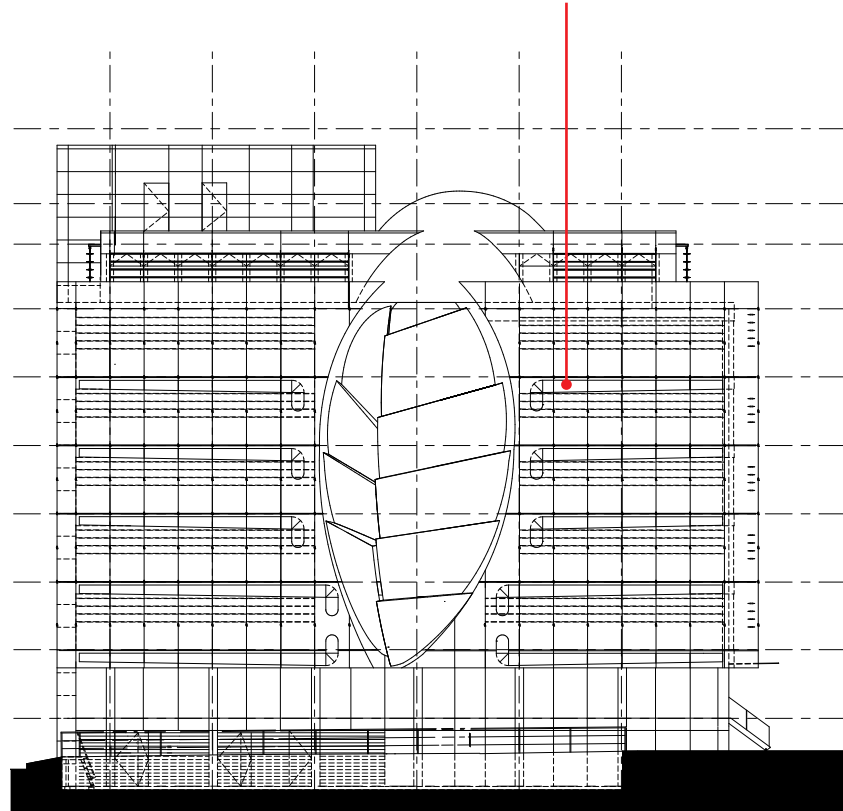


Fig. 4.1 - Existing South Elevation

Existing stainless steel ventilation ductworks,
showed as per existing survey available.

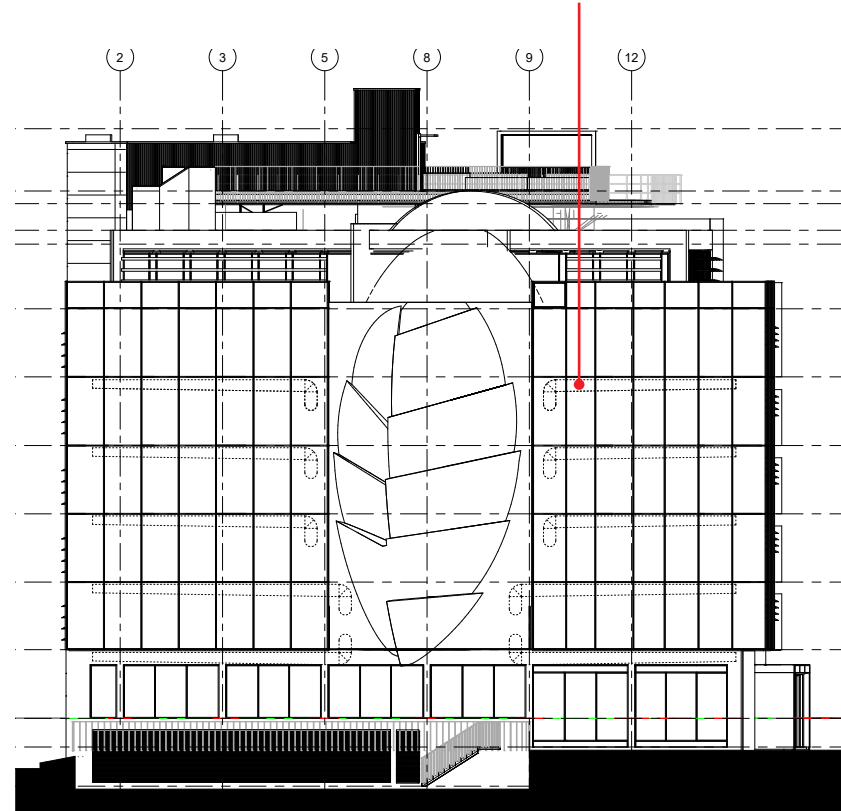


Fig. 4.2 - Consented South Elevation

Existing stainless steel ventilation ductworks
showing more details following the new
detailed survey information received.

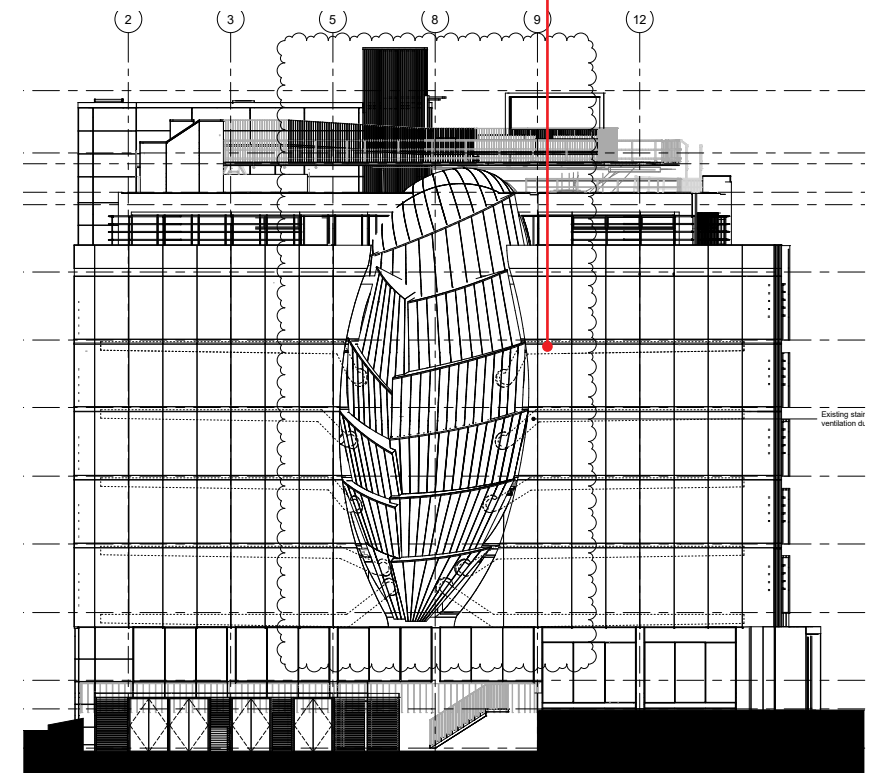


Fig. 4.3 - Proposed South Elevation

Existing stainless steel
ventilation ductworks



Fig. 4.4 - Existing View - Along Charlotte Street

Existing stainless steel
ventilation ductworks

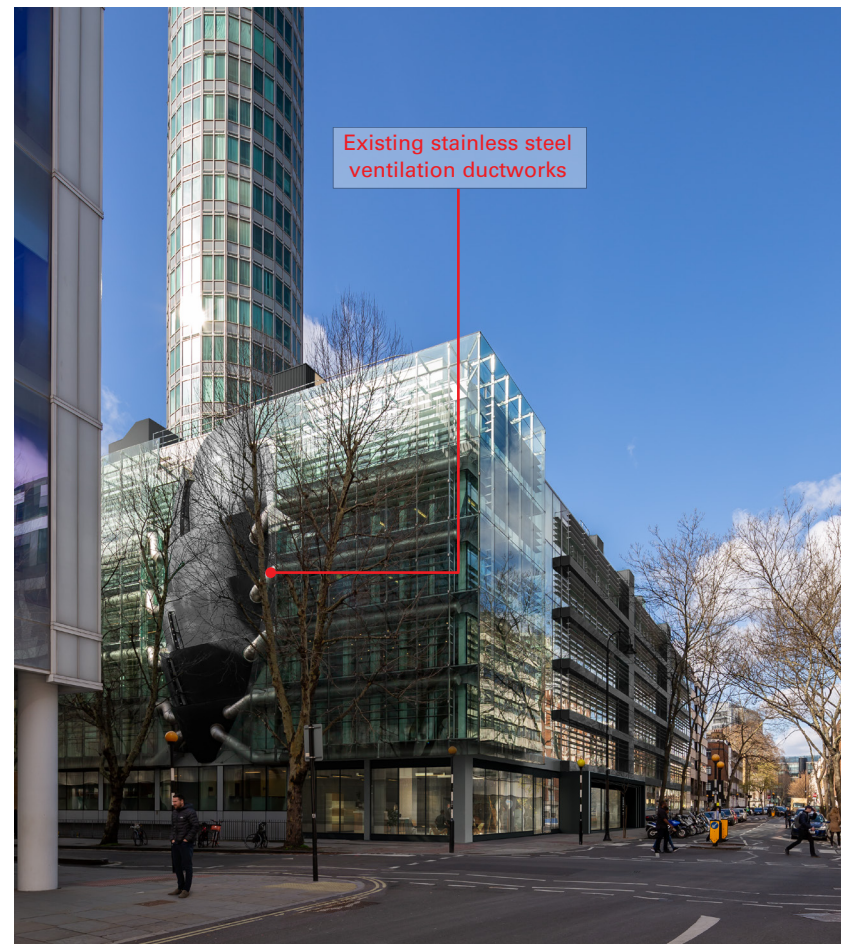


Fig. 4.5 - Consented View - Along Charlotte Street

Existing stainless steel
ventilation ductworks

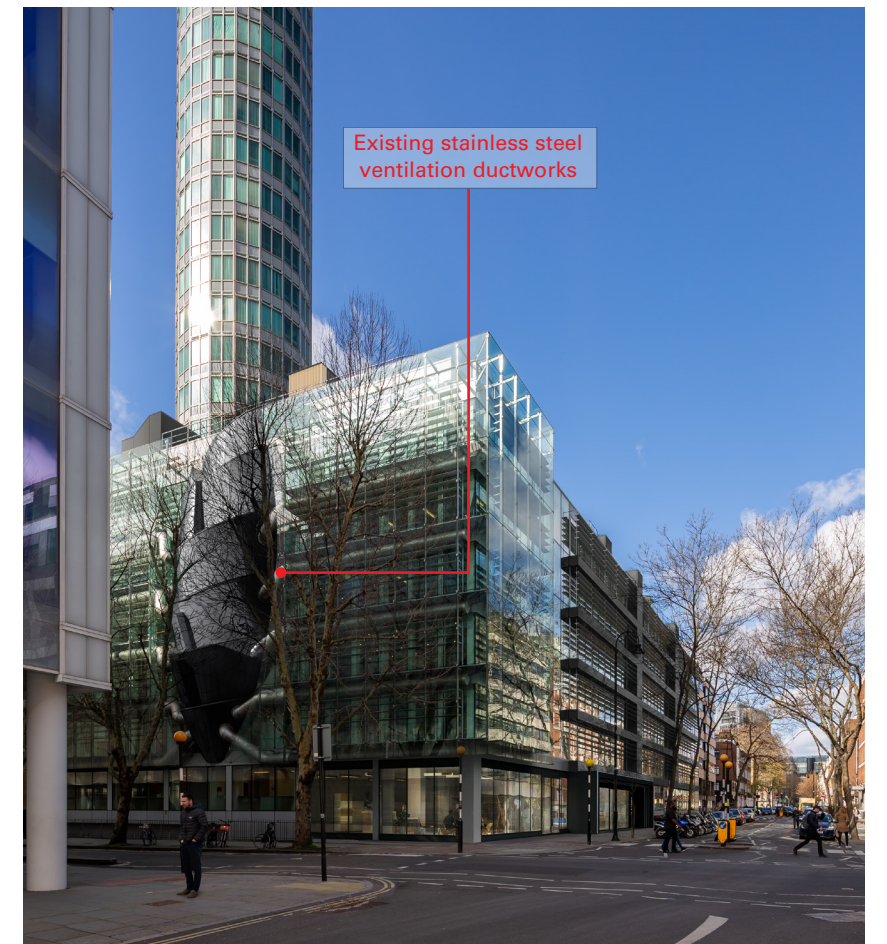


Fig. 4.6 - Proposed View - Along Charlotte Street

