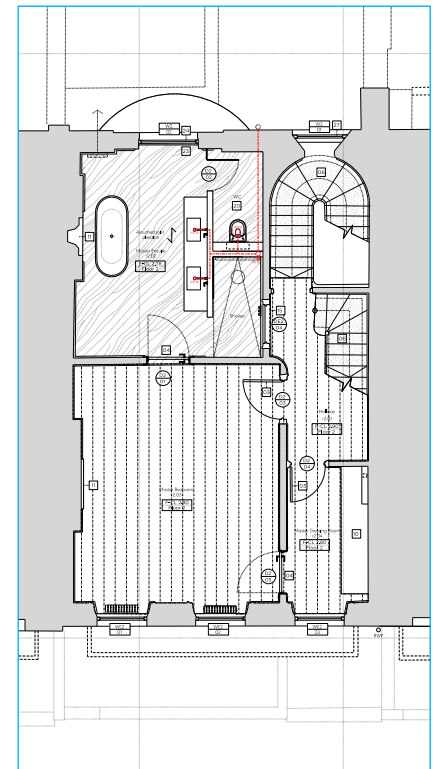
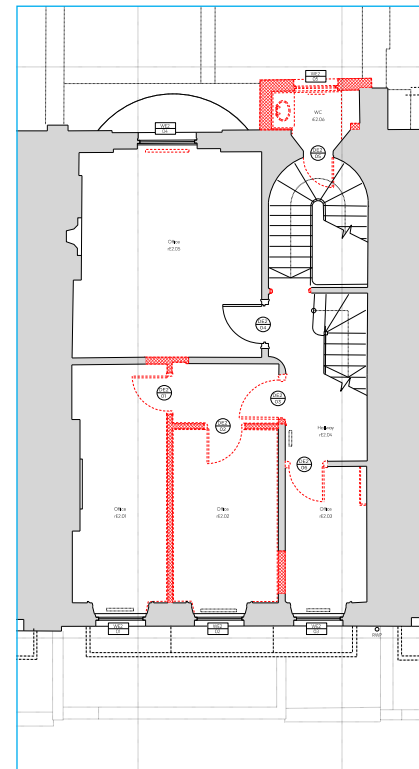


## The Proposal: Plan Form & Massing

### Plan Form

The design strategy of the proposed spatial layout is to reinstate a plan form that is characteristic of a Georgian house of this age by removing modern partitions that have been installed during its use as an office. The demolition and proposed second floor plan on the right is a good example of this, and illustrate how more appropriate proportions are reinstated as part of the proposals.



Demolition & Proposed Second Floor Plan, illustrating how the design proposals seek to reinstate the original Georgian proportions