

KEY PLAN

NOTES
 THIS DRAWING MUST NOT BE SCALED.
 ALL DIMENSIONS ARE TO BE VERIFIED AND CHECKED ON SITE. ANY DISCREPANCIES THAT ARE, OR BECOME APPARENT SHOULD BE REPORTED TO CHAPMAN TAYLOR.
 AREAS INDICATED ARE APPROXIMATE GROSS INTERNAL AREA. THEY RELATE TO THE LIKELY AREA OF THE BUILDING AT THE CURRENT STAGE OF DESIGN. ANY DECISIONS TO BE MADE ON THE BASIS OF THESE PREDICTIONS, WHETHER AS TO PROJECT VIABILITY, PRE-LETTING, LEASE AGREEMENTS, OR THE LIKE, SHOULD INCLUDE DUE ALLOWANCE FOR THE INCREASES AND DECREASES INHERENT IN THE DESIGN DEVELOPMENT AND BUILDING PROCESS.

© COPYRIGHT CHAPMAN TAYLOR 2020

CT Drawing Reference

CT Series 25 - Details
 - For external wall build up
 - Additional roof details

CT Series 27 - Roof Drawings
 - For Roof Type Scope Plans
 - For Roof Types
 - For Parapet

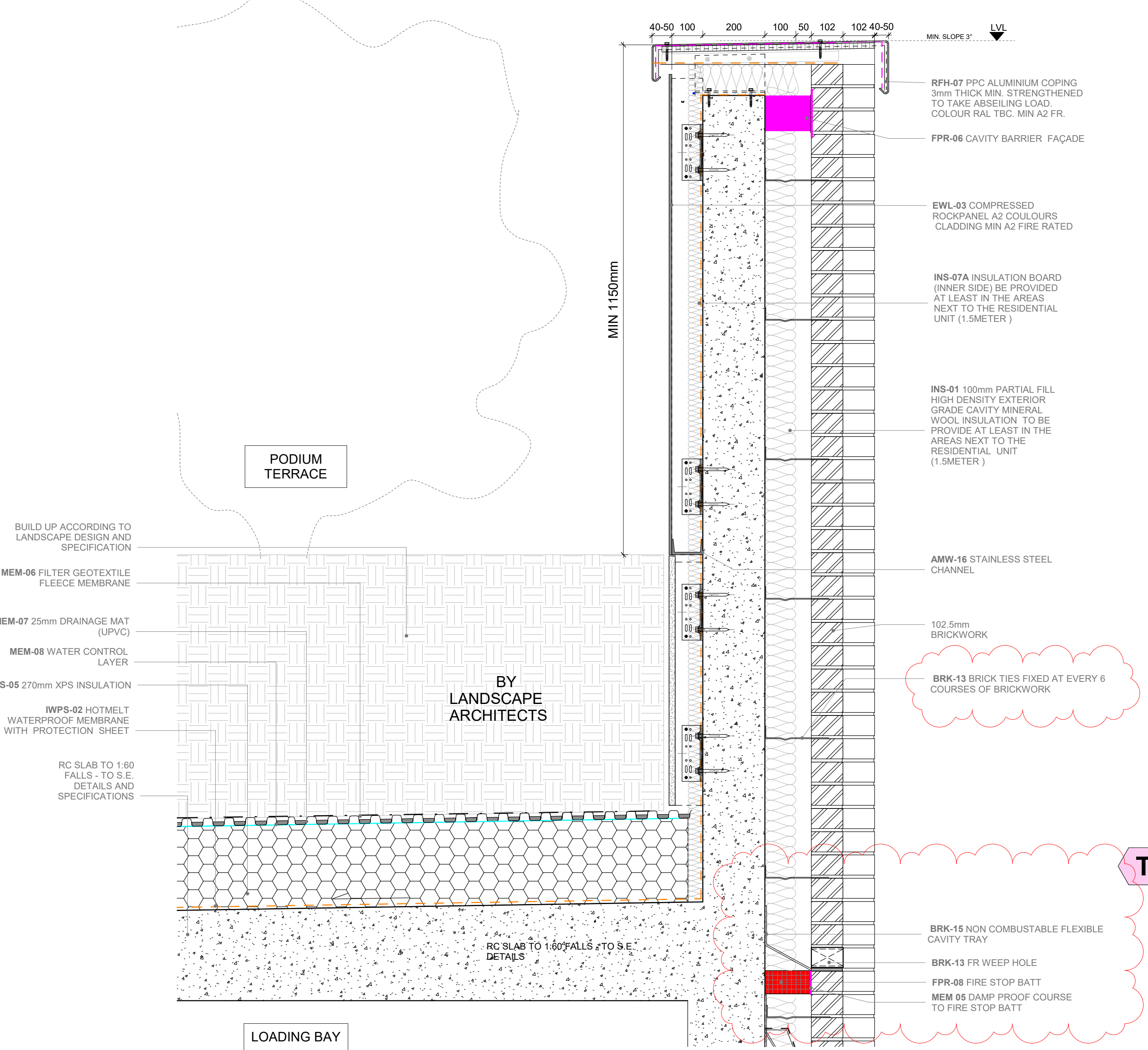
CT Series 30 - Internal walls
 - For internal wall build ups

CT Series DES-007 - NBS Specifications

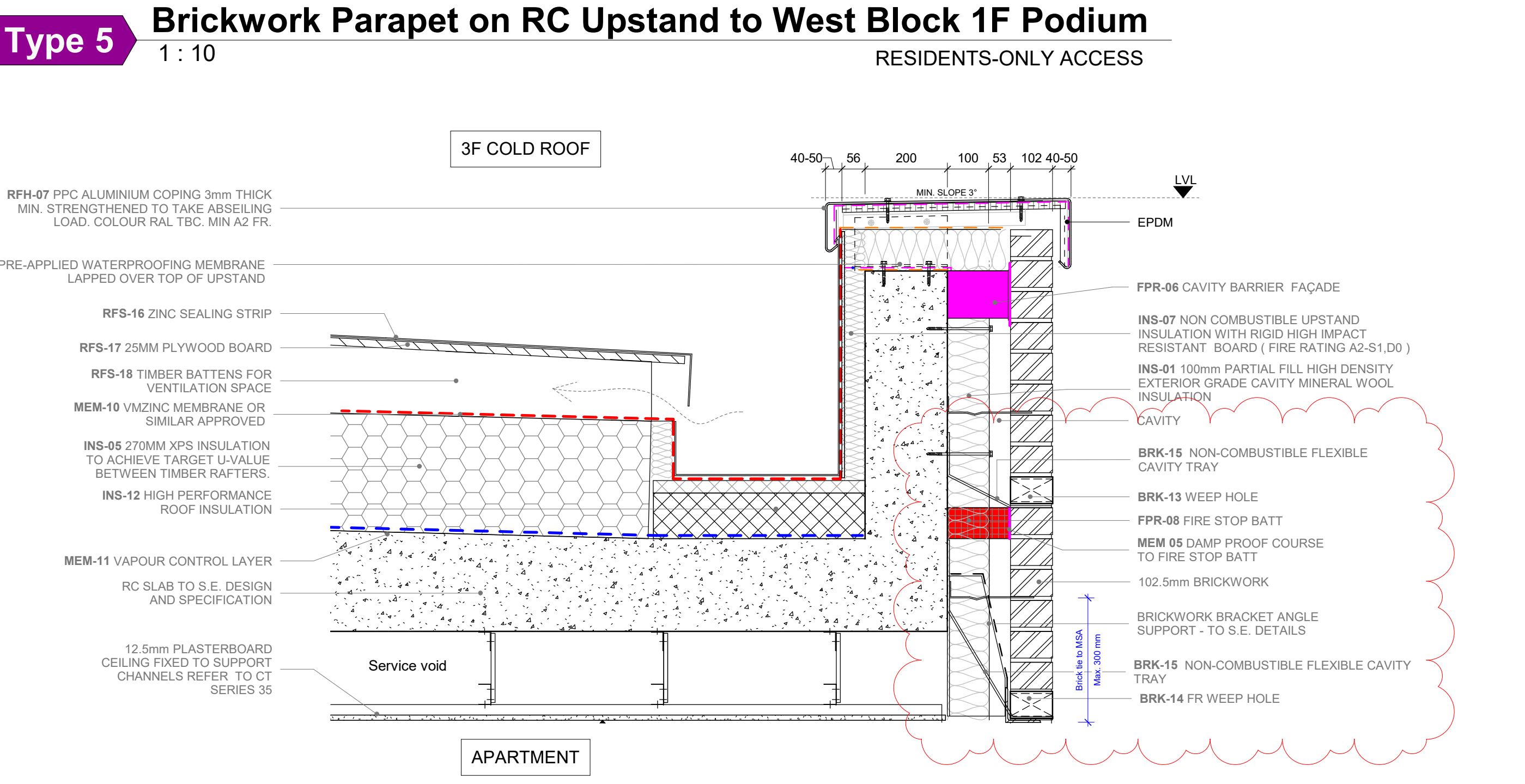
CTA-DES-006-0006 - Technical Reference Sheet

Please refer to drawing numbers:
 001-A-CTA-DRG-27-ZZ-0006 For parapet types
 001-A-CTA-DRG-27-ZZ-0010's For roof types

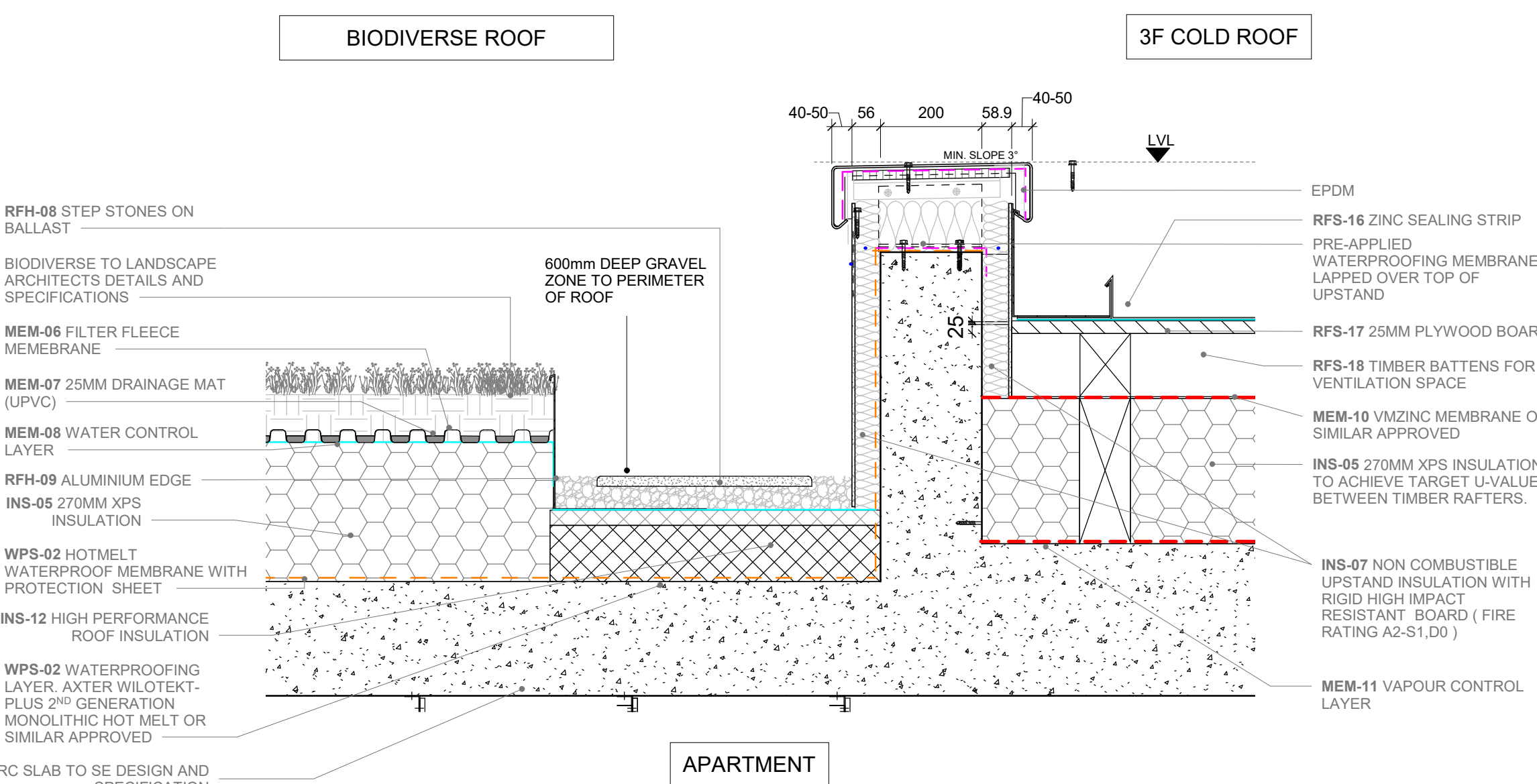
- MEM-01 Non-combustible vapour control layer
- MEM-02 Non-combustible EPDM
- MEM-03 Non-combustible breather membrane
- MEM-05 Non-combustible damp proof course
- MEM-08 Water control layer
- Concrete Slab Edge
- WPS-02 Waterproofing Layer System, hotmelt or similarly approved



Type 7 Zinc Cladding Parapet on RC Upstand to East Block 3F Private Terrace. 1:10 RESIDENTS-ONLY ACCESS



Type 5 Brickwork Parapet on RC Upstand to West Block 1F Podium 1:10 RESIDENTS-ONLY ACCESS



Type 8 NON COMBUSTIBLE INSULATION ON RC UPSTAND 1:10 NB. FALL PROTECTION BY FALL RESTRAINT SYSTEM MAINTENANCE ACCESS ONLY

Type 6 Brickwork Parapet on RC Upstand to East Block 3F Cold Roof 1:10 NB. FALL PROTECTION BY FALL RESTRAINT SYSTEM MAINTENANCE ACCESS ONLY

REV	DATE	BY	DESCRIPTION	CHKD
C03	13.10.22	AS	(SW-48) Insulation thickness revised, fire rating and fire barriers updated	FL
C02	20.09.22	AS	(WB-047) Slab edge details insert	FL
C01	17.03.22	SP	(SW-024) REVISED ROOF DETAILS	BE
P02	27.10.21	JC	(SW-017) PLANNING CONDITIONS SUBMISSION	SS
P01	23.09.21	JC	(SW-009) STAGE 4 ISSUE	SS

CLIENT



PROJECT
156 WEST END LANE



STRUCTURAL ENGINEER



SERVICES ENGINEER



DRAWING TITLE
Roof Parapet Details (Sheet 2)

Scale 1:100 @ A1

PROJECT NUMBER	ROLE	ORIGINATOR	TYPE	SERIES	LEVEL	SERIAL	REVISION
0001	A	CTA	DRG	27	ZZ	0005	C03