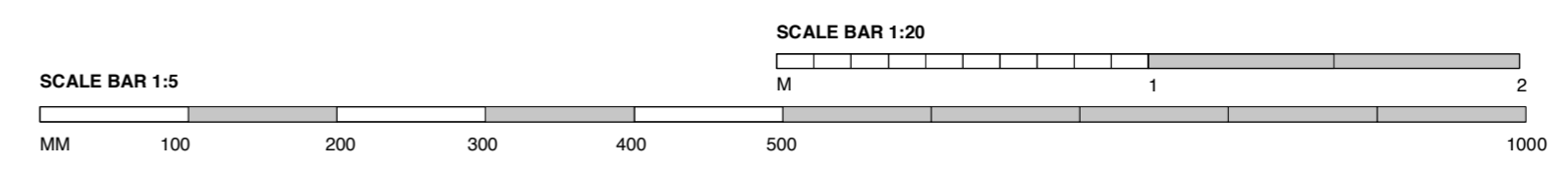
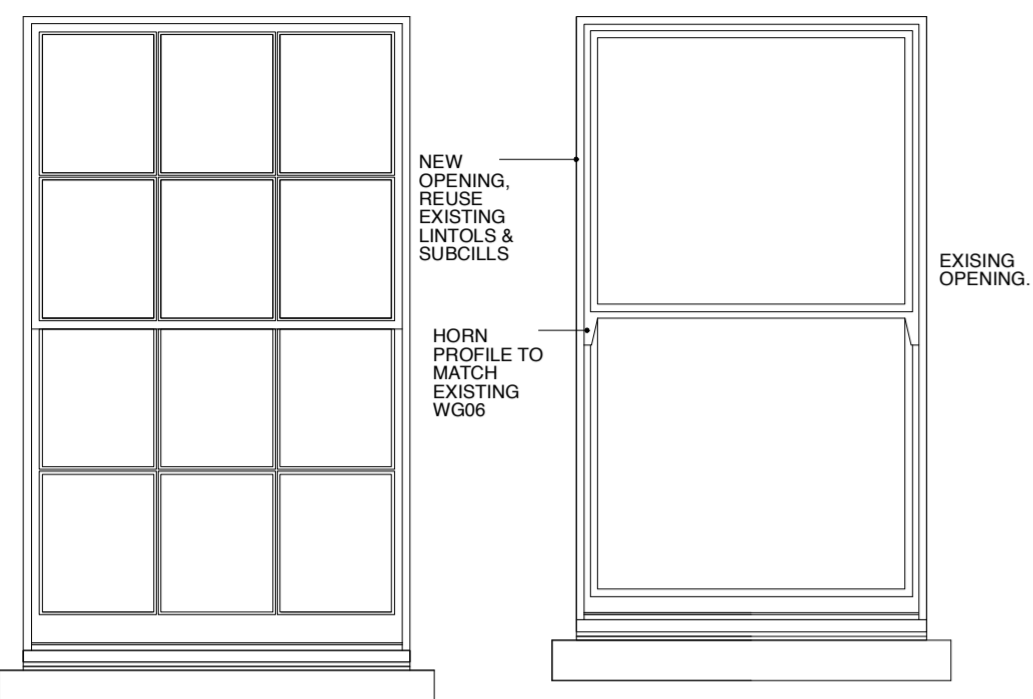


EXTERNAL ELEVATIONS OF NEW WINDOWS

1:20 @ A2



BASEMENT



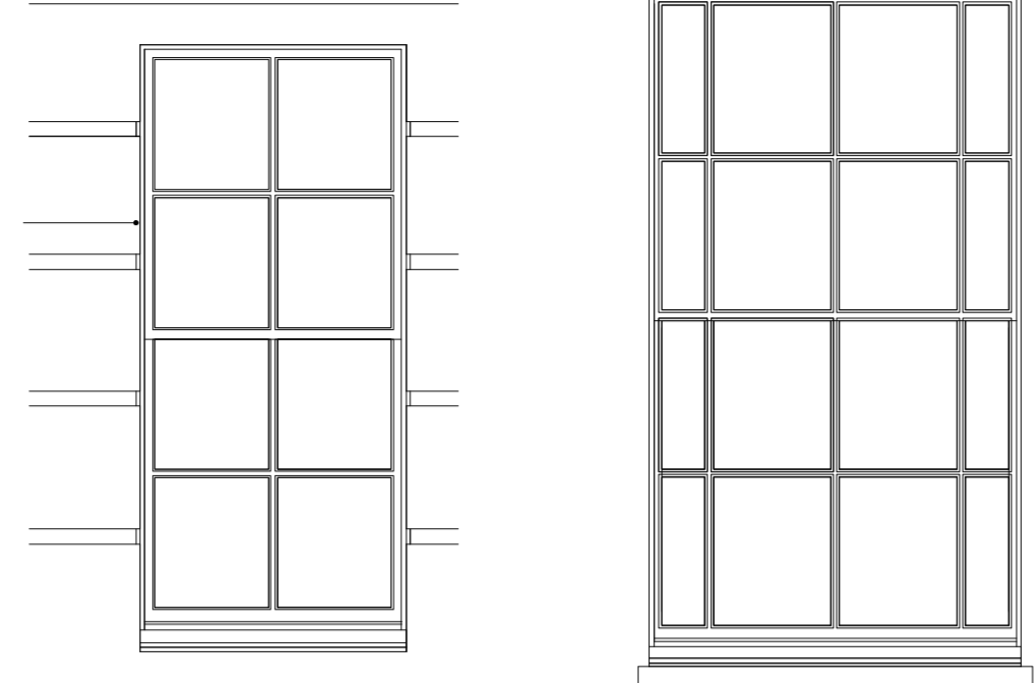
**WB08
WB07**
FRONT ELEVATION
GUEST KITCHEN LIVING DINING

6/6 SLIDING SASH
SINGLE GLAZING
WITH INTERNAL SHUTTERS

**WB04
WB05**
REAR ELEVATION
DEN

1/1 SLIDING SASH
SINGLE GLAZING
NO SHUTTERS

GROUND FLOOR



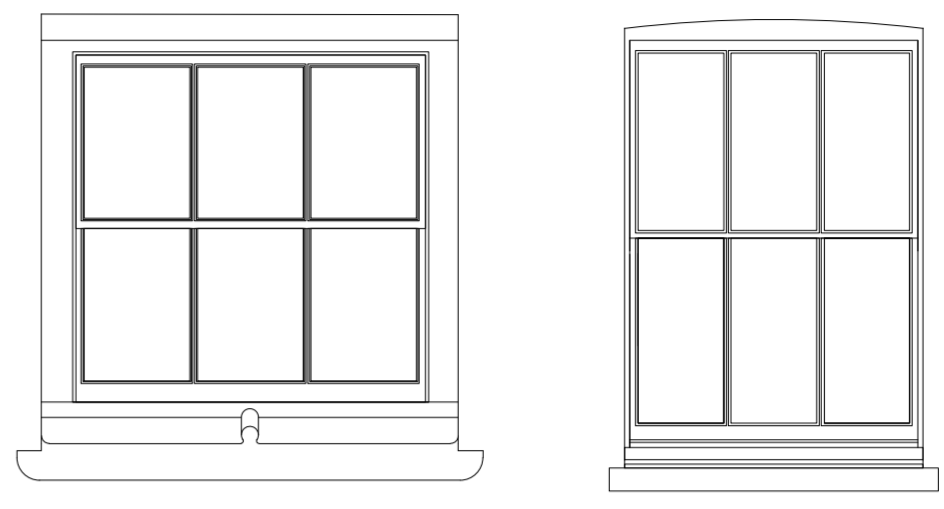
**WG01
WG02**
FRONT ELEVATION
PORCH

4/4 SLIDING SASH
SINGLE GLAZING

WG05
REAR ELEVATION
BOOT ROOM

8/8 SLIDING SASH
WITH MARGIN LIGHTS
SINGLE GLAZING

THIRD FLOOR



**W301
W302
W305
W306**
FRONT & REAR ELEVATIONS
OFFICE & BEDROOMS

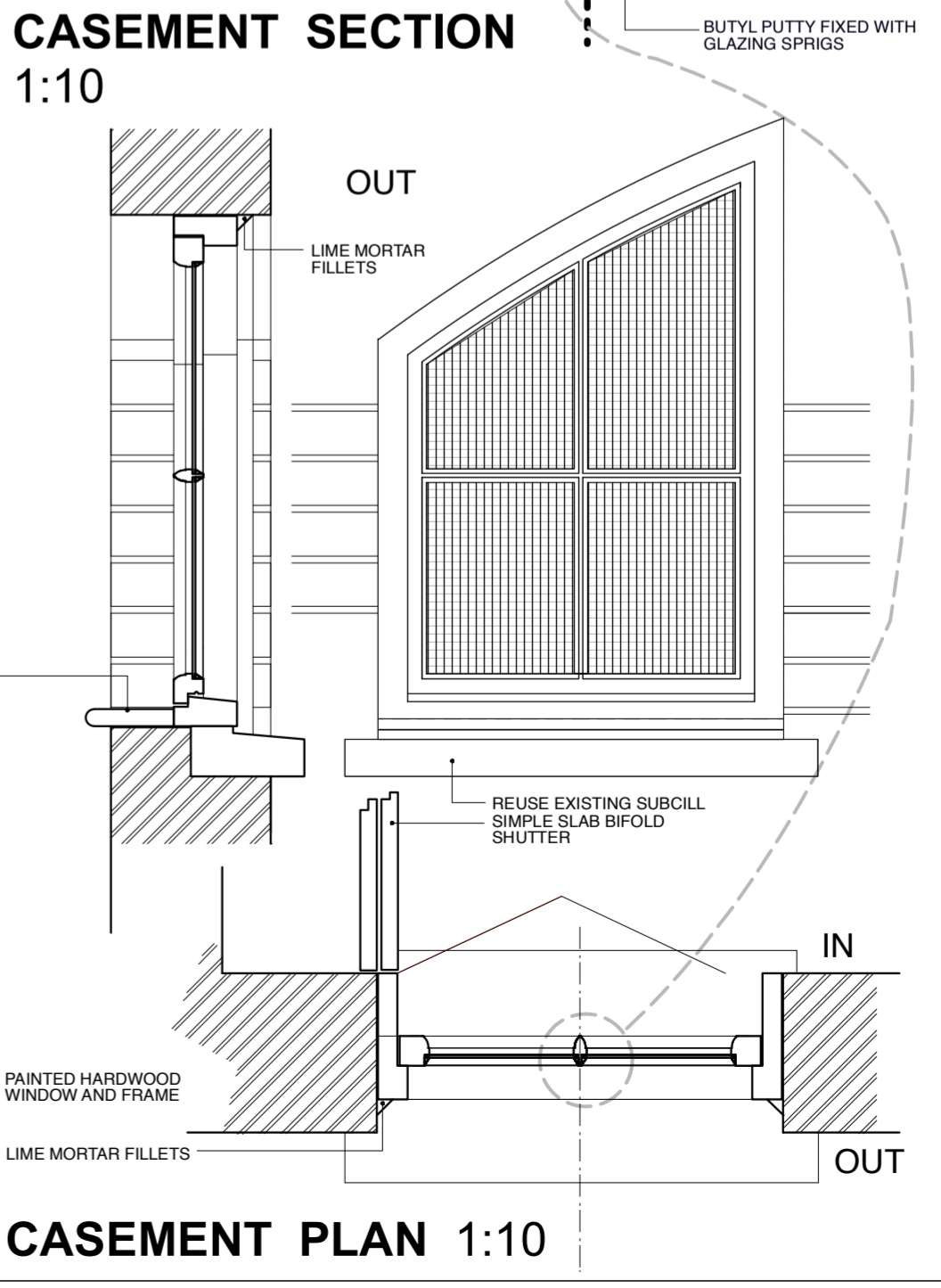
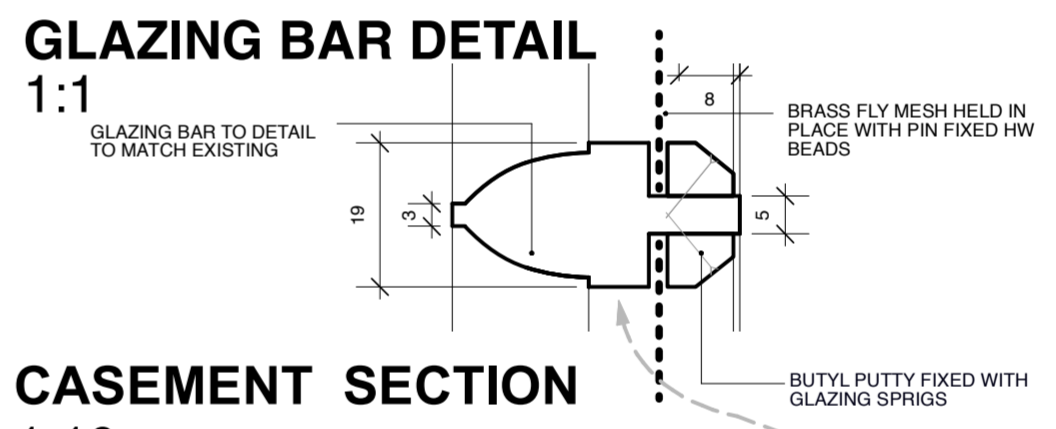
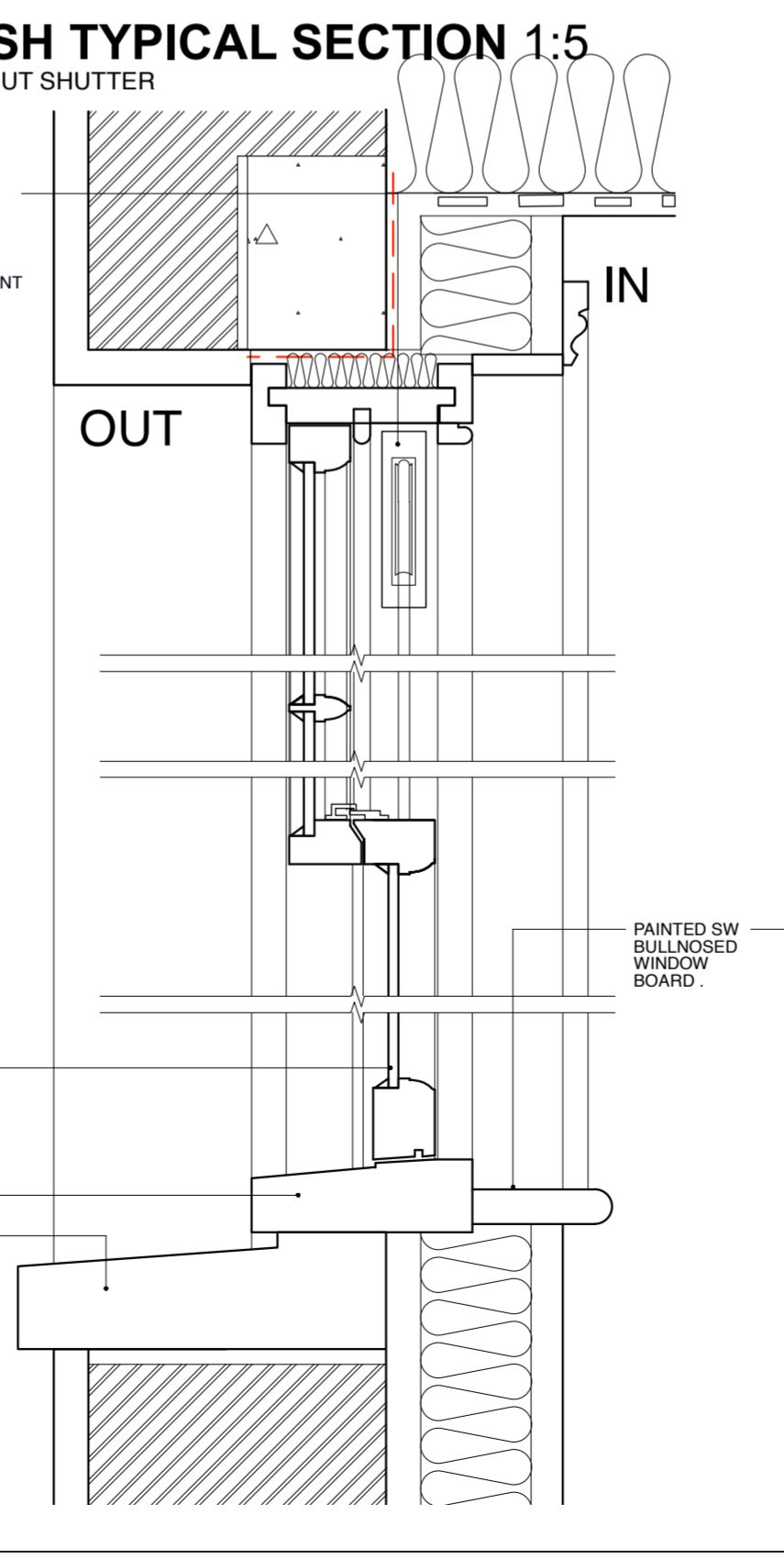
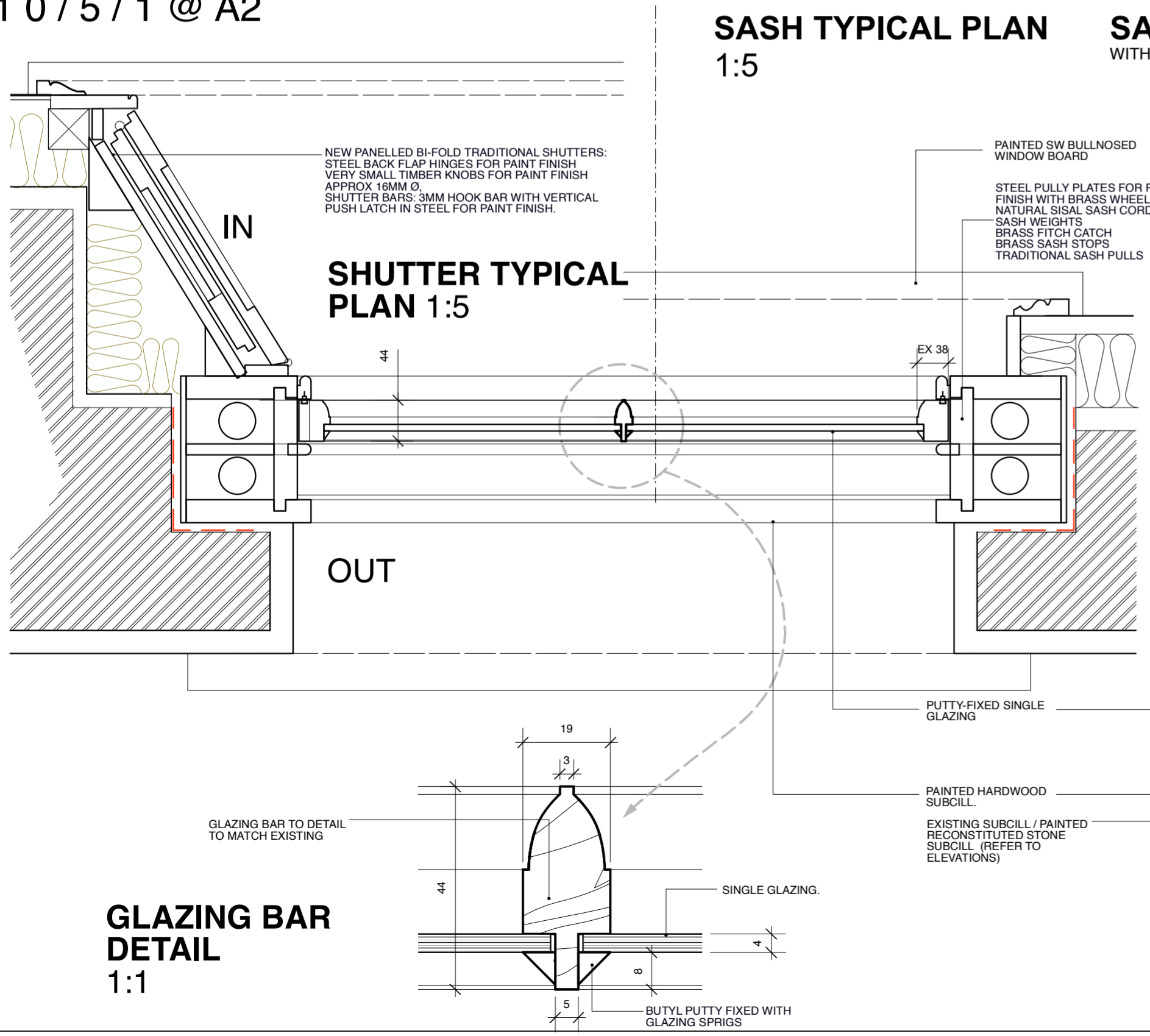
3/3 SLIDING SASH IN INVERTED
DORMER
SINGLE GLAZING

W304
SIDE ELEVATION
BEDROOM 5

3/3 SLIDING SASH
SINGLE GLAZING

TYPICAL DETAILS OF NEW WINDOWS

1:1 0/5/1 @ A2



Lisa Shell architects
 EG20 Norway Wood, 281 Harford Road, NH 50T
 T. 020 7275 2232 E. info@lisashellarchitects.co.uk
 www.lisashellarchitects.co.uk

7 THE GROVE, HIGHGATE, LONDON N6 6JU

NEW WINDOWS & SHUTTERS

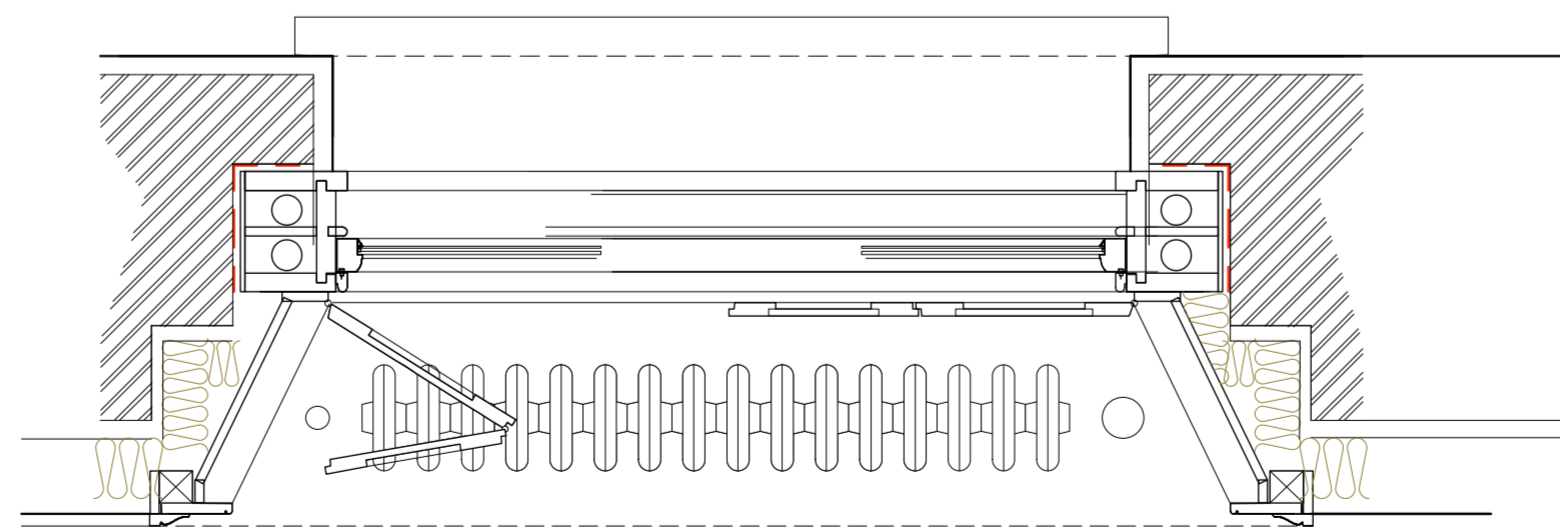
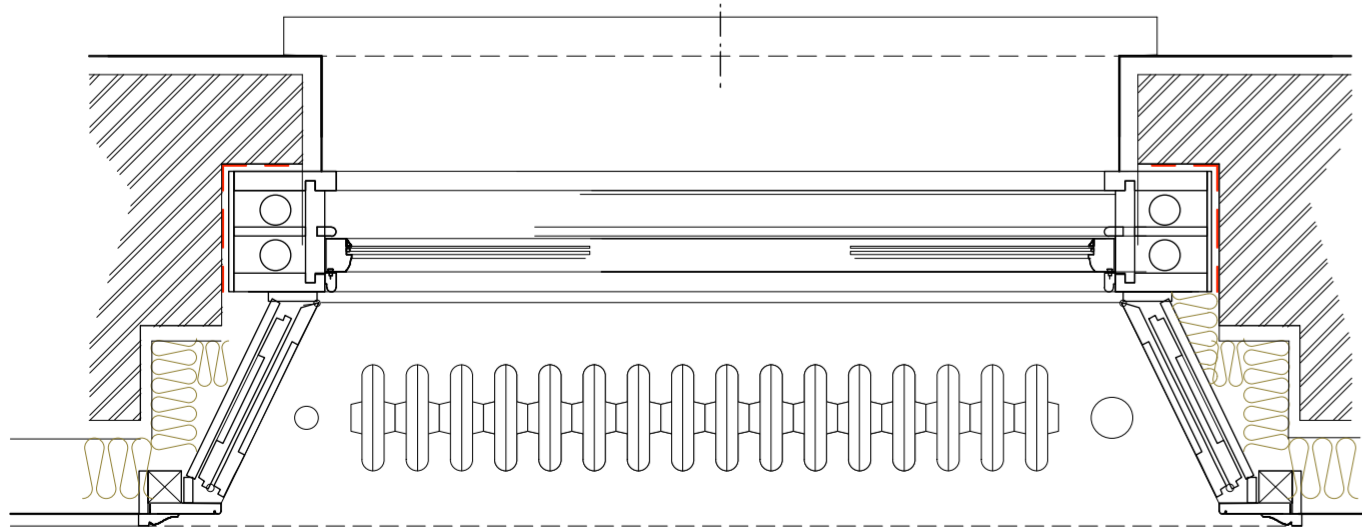
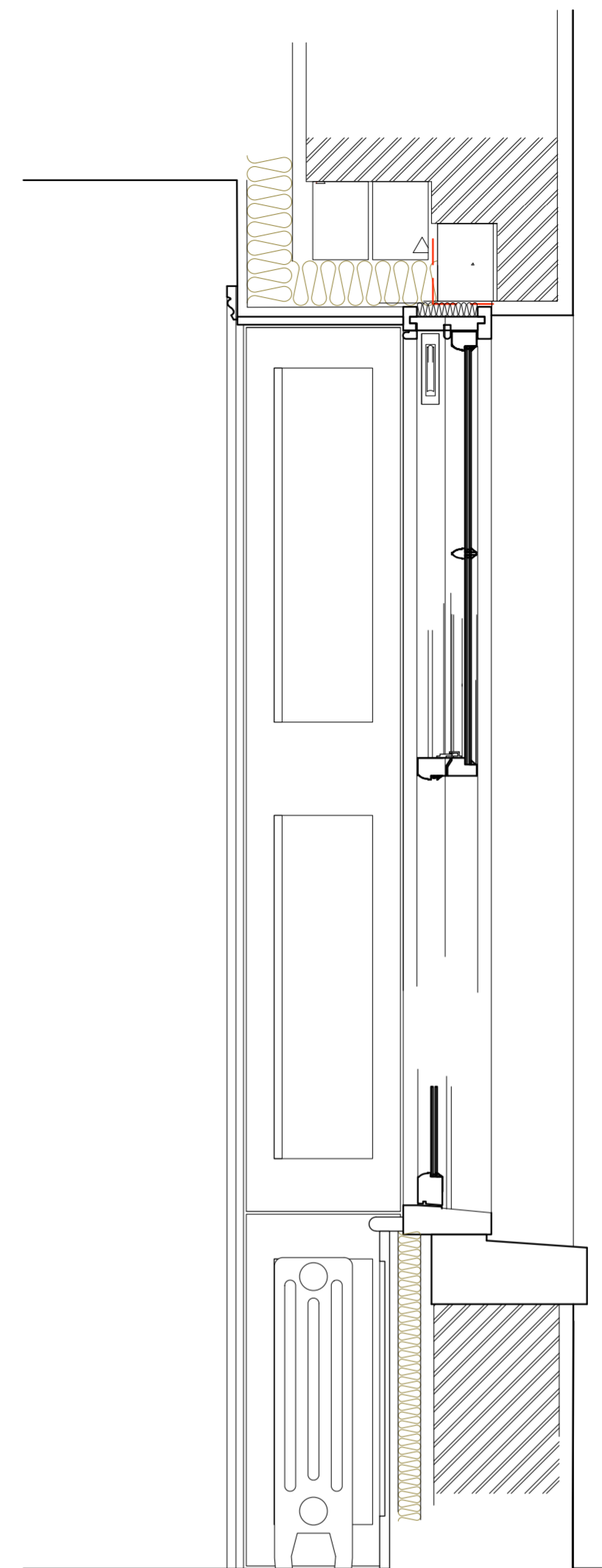
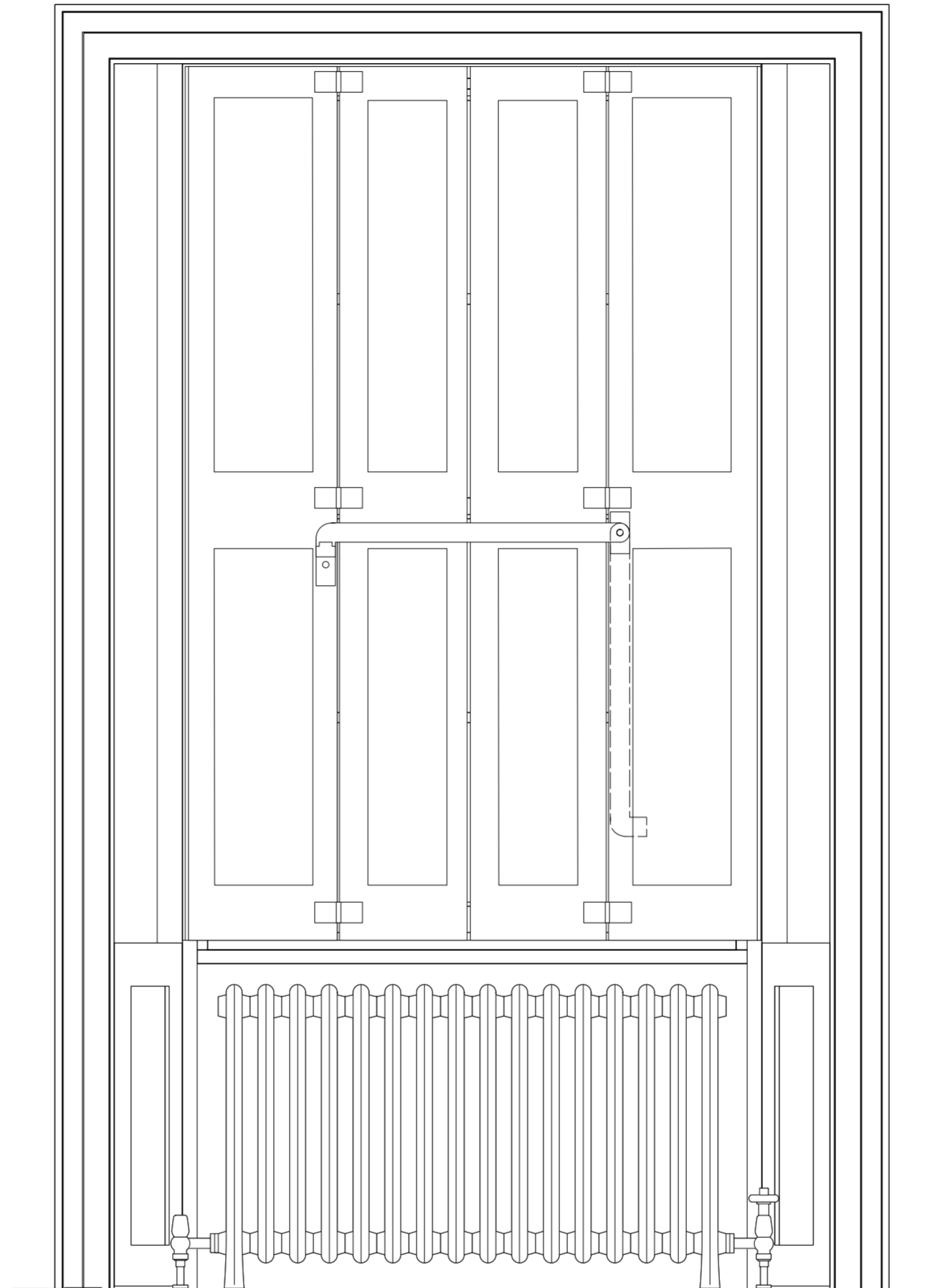
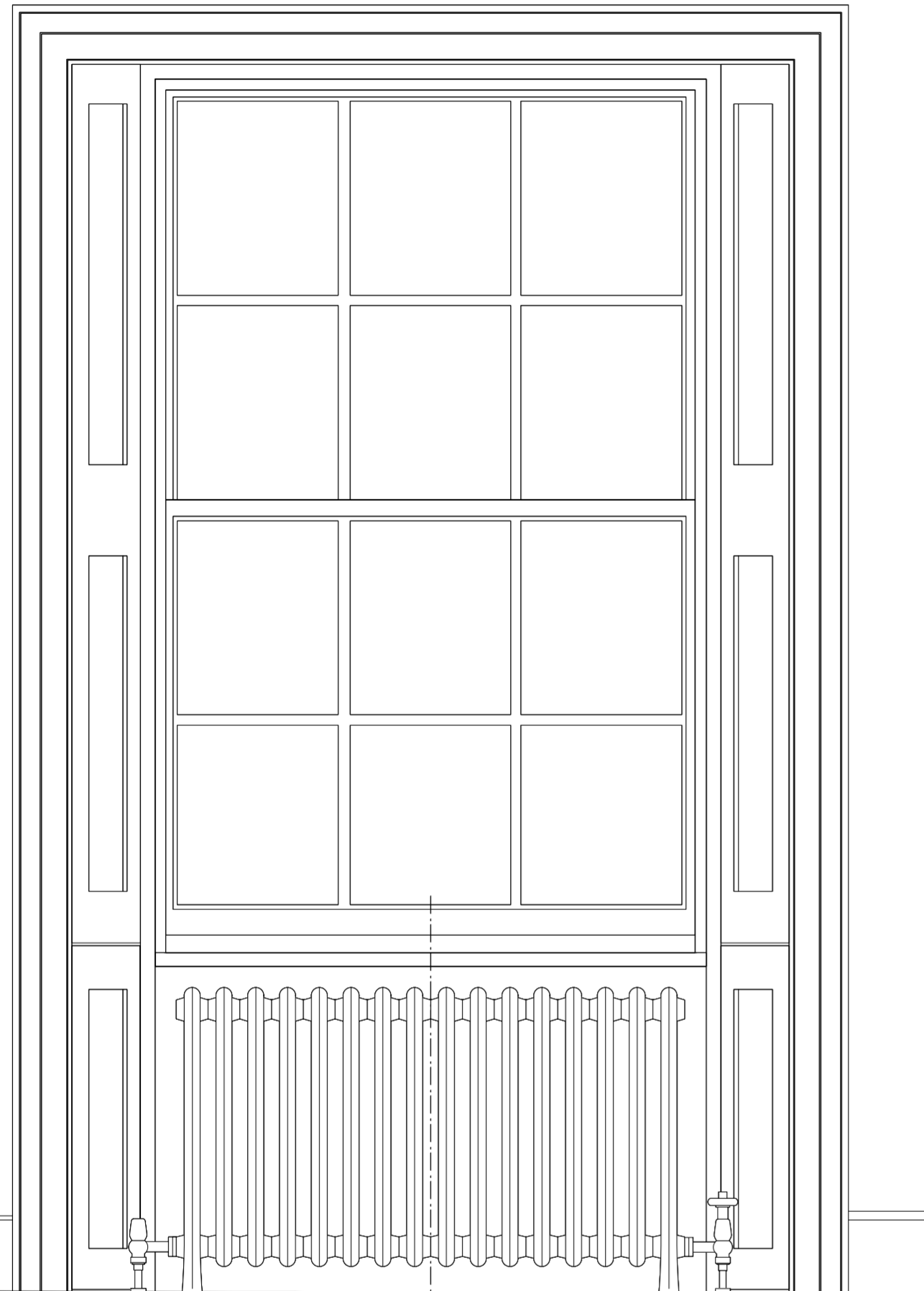
GRO7 / COP / 301
 1:1/5/20 @ A2
 REFER ALL DISCREPANCIES TO ARCHITECT

REVISIONS/ ISSUE

01/06/2023
 ISSUE TO PLANNING
 FOR DOCS: DETAIL

**SASH & SHUTTER
TYPICAL ELEVATIONS & PLANS**

1:10



**SASH & SHUTTER
TYPICAL SECTION**
1:10

LOCATIONS

**WB08
WB07**
GUEST KITCHEN LIVING DINING
NEW SASHES WITH SHUTTERS

WG03
STUDY
EXISTING SASHES WITH NEW
SHUTTERS

**W101
W102**
DRESSING ROOM & BATHROOM
EXISTING FRENCH WINDOWS AND
SHUTTER BOXES WITH
REPLACEMENT SHUTTERS

SCALE BAR 1:10



ALL IN SW FOR PAINT FINISH; DETAIL TO MATCH ORIGINAL
PAINTED STEEL SHUTTER HINGES AND SHUTTER BAR

**Lisa Shell
architects**

EG22 Norway Wharf, 28 Hartford Road, N1 5GT
T: 020 7265 7272 E: info@lisashellarchitects.co.uk

www.lisashellarchitects.co.uk

Chartered Architect RIBA, Registered & Incorporated in England
Registration No: 20843263, 20843263, 20843263, 20843263, 20843263

7 THE GROVE, HIGHGATE,
LONDON N6 6JU

TYPICAL SHUTTER DETAILS

GRO7 / COP / 303

1:10 @ A2
REFER ALL DISCREPANCIES TO ARCHITECT

REVISIONS/ ISSUE

01/06/2023
ISSUE TO PLANNING
FOR DOCS: DETAIL