

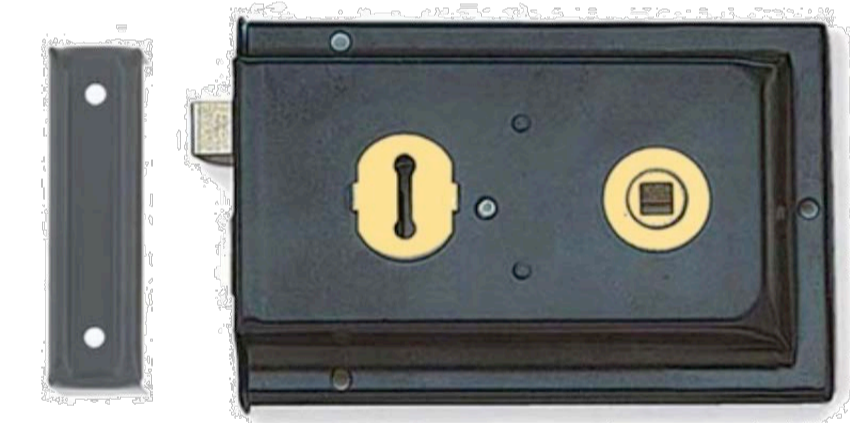
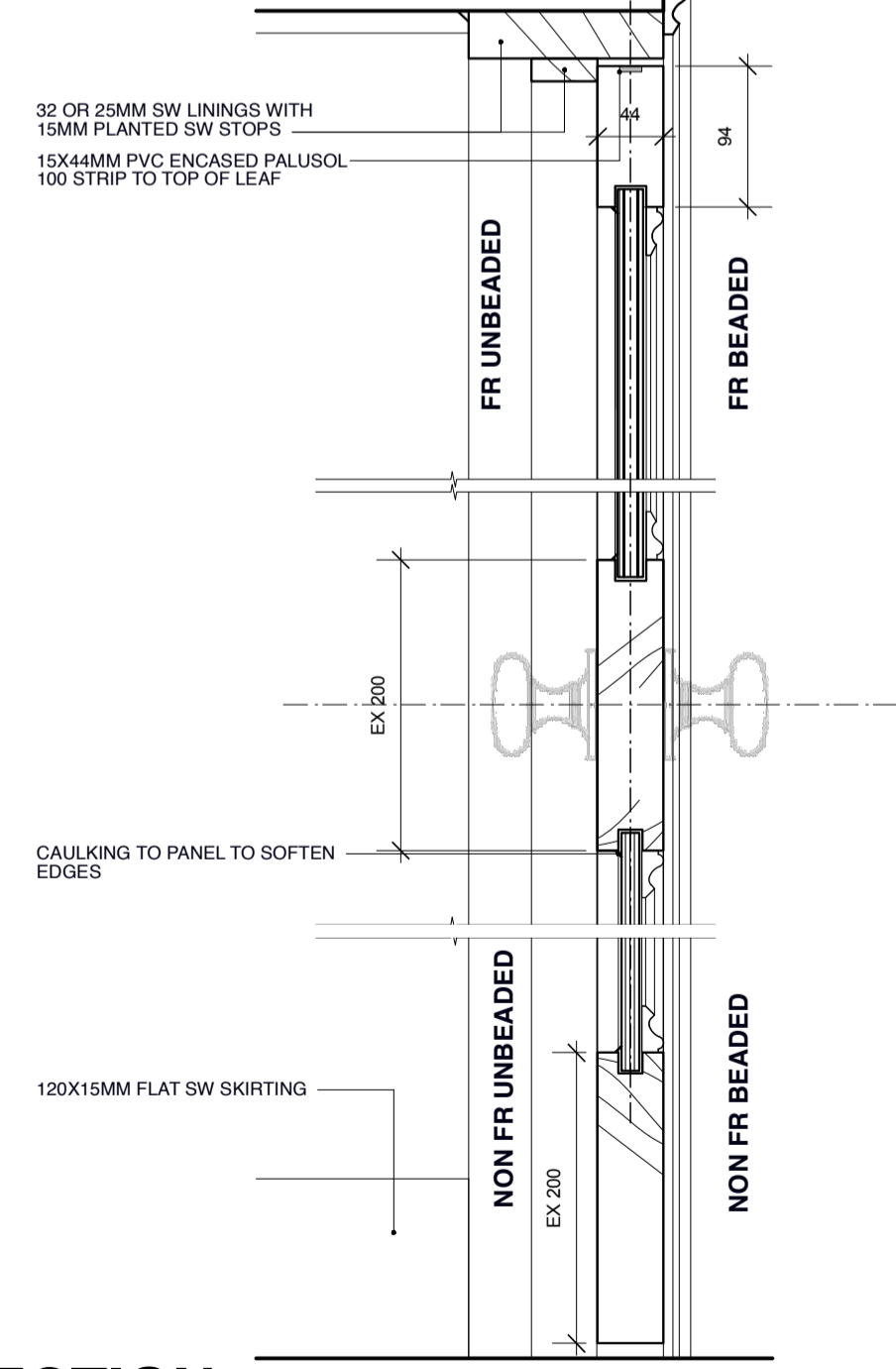
NEW & ALTERED INTERNAL BASEMENT DOORS

	DB02	DB03	DB04	DB05	DB06	DB07
ELEVATION	<p>GUEST KITCHEN/ LIVING/ DINING</p> <p>ADAPT EXISTING DOOR LEAF IN ALTERED OPENING UPGRADE TO FD30 NEW IRONMONGERY PAINT FINISH</p>	<p>CLOAK ROOM</p> <p>NEW 2-PANELLED DOOR LEAF IN ALTERED OPENING BEADS TO MATCH DB02 NEW LININGS, STOPS AND OGEE ARCHITRAVES NEW IRONMONGERY PAINT FINISH</p>	<p>LOBBY</p> <p>ADAPT EXISTING DOOR LEAF IN ALTERED OPENING UPGRADE TO FD30 NEW IRONMONGERY PAINT FINISH</p>	<p>REUSE 4-PANELLED DOOR LEAF FROM BATHROOM NEW IRONMONGERY PAINT FINISH</p>	<p>GUEST BEDROOM/ TV ROOM</p> <p>NEW 4-PANELLED DOOR LEAF WITHOUT BEADS WITH SUPALUX SANDWICH TO PANELS TO ACHIEVE FD30 NEW IRONMONGERY PAINT FINISH</p>	<p>GUEST BATHROOM</p> <p>NEW SW PANELLED 44MM THICK DOOR LEAF IN NEW OPENING BEADS TO MATCH DB04 NEW IRONMONGERY PAINT FINISH</p>
PLAN	<p>GUEST KITCHEN/ LIVING/ DINING</p> <p>SMALL OGEE ARCHITRAVES AND STAFF BEAD SKIRTING</p>	<p>ENTRANCE HALL</p> <p>SMALL OGEE ARCHITRAVES AND FLAT SKIRTING</p>	<p>ENTRANCE HALL</p> <p>SMALL OGEE ARCHITRAVES AND FLAT SKIRTING</p>	<p>LOBBY</p>	<p>TV ROOM/ GUEST BEDROOM</p>	<p>GUEST BATHROOM</p>

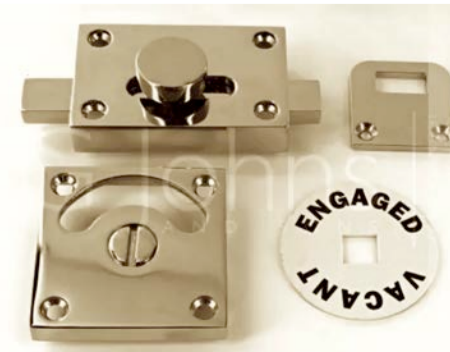
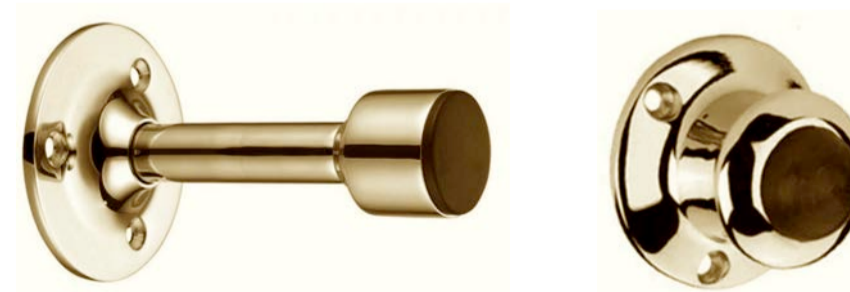
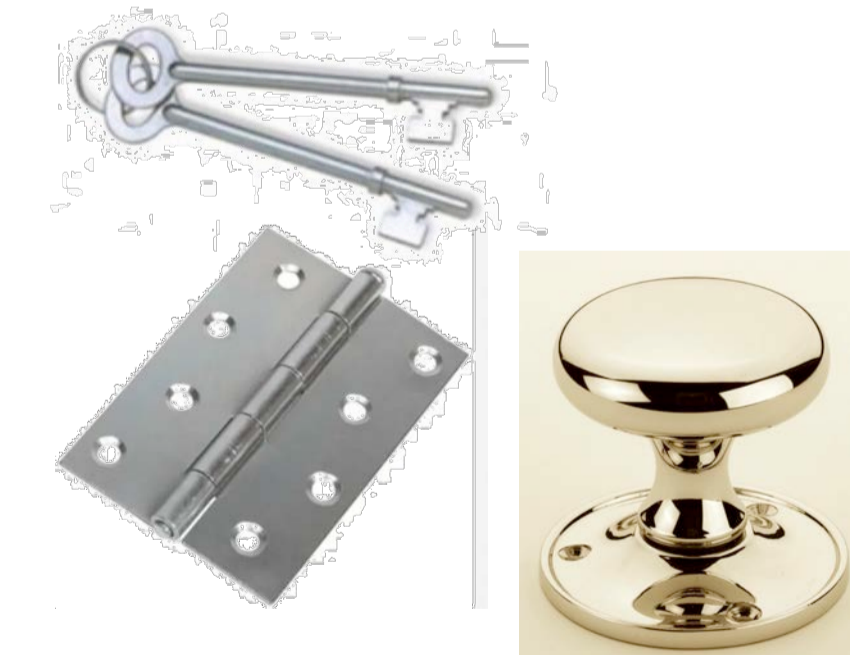
NEW INTERNAL BASEMENT DOORS TYPICAL DETAILS

PANELLED DOOR & MOULDINGS

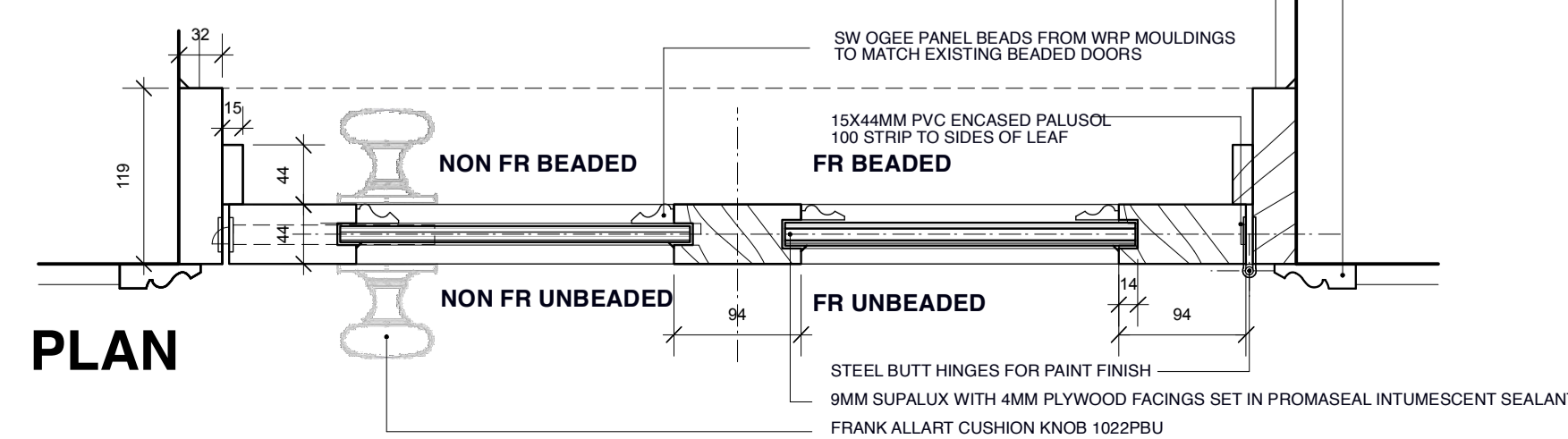
1:5 @ A2



IRONMONGERY
NTS



SECTION



PLAN

PHOTOGRAPHS EXISTING DOORS

FOR RETENTION/ RE-USE



DB02
TYPICAL DOOR FOR RE-USE



DB09
BACK STAIR



DB11
WINE CELLAR



DB12
PASSAGE

Lisa Shell
architects

7 THE GROVE, HIGHGATE, LONDON N6 6JU
www.lisashellarchitects.co.uk

NEW & ALTERED INTERNAL BASEMENT DOORS SHEET 1
GRO7 / CO-P / 201

1:20/5 @ A1; 1:10/2.5 @ DE
DO NOT SCALE FROM THIS DRAWING
PREFER ALL DISCREPANCIES TO ARCHITECT

REVISIONS/ ISSUE
01/06/2023
ISSUE TO PLANNING
FOR DOC3: DETAIL

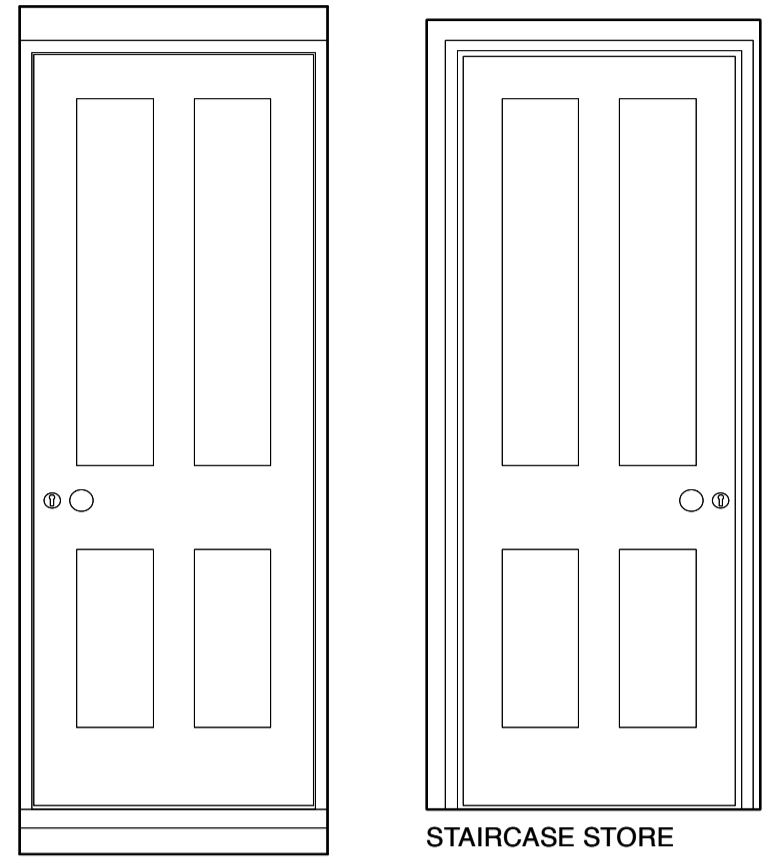
NEW & ALTERED INTERNAL BASEMENT DOORS

ELEVATION

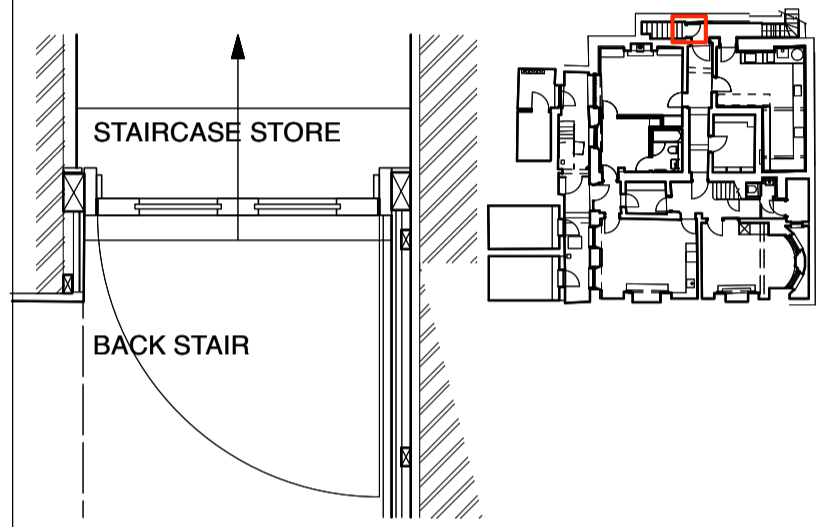
PLAN LOCATION

DB08

STAIRCASE STORE
NEW 4-PANELLED DOOR LEAF WITHOUT BEADS WITH SUPALUX SANDWICH TO PANELS TO ACHIEVE FD30 IN EXISTING OPENING
RENEW LININGS AND STOPS
NEW IRONMONGERY
PAINT FINISH

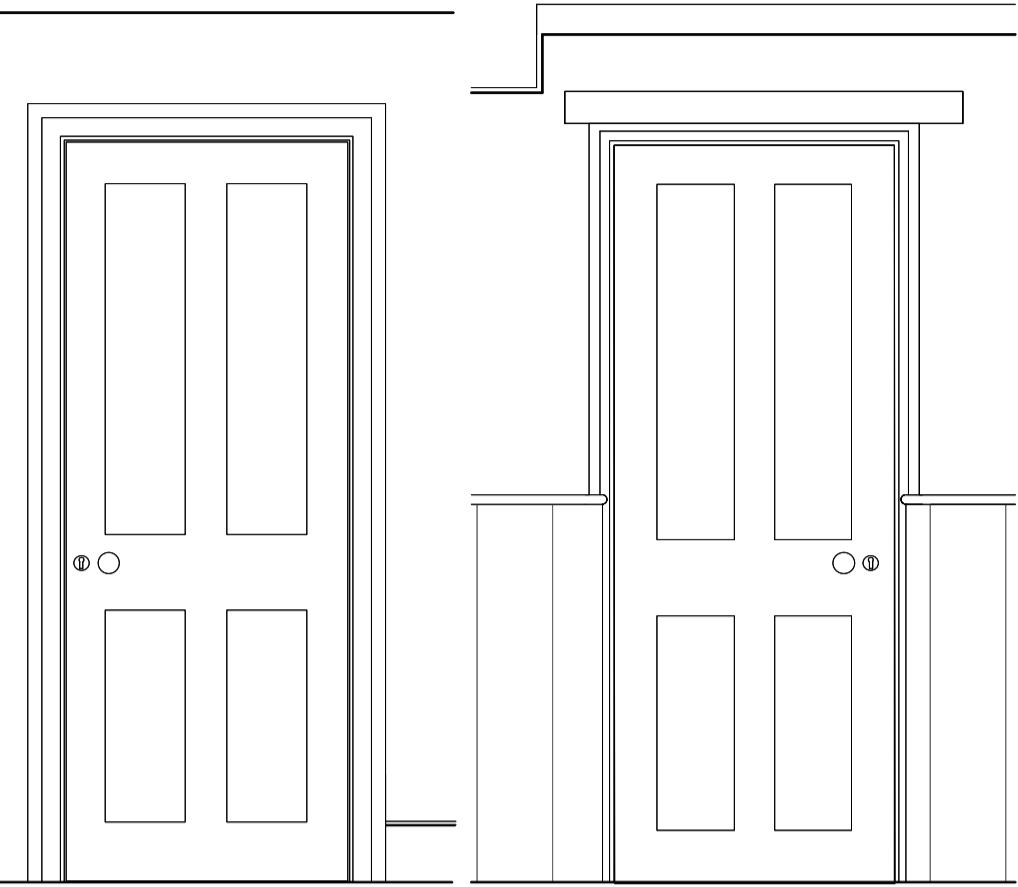


BACK STAIR STAIRCASE STORE

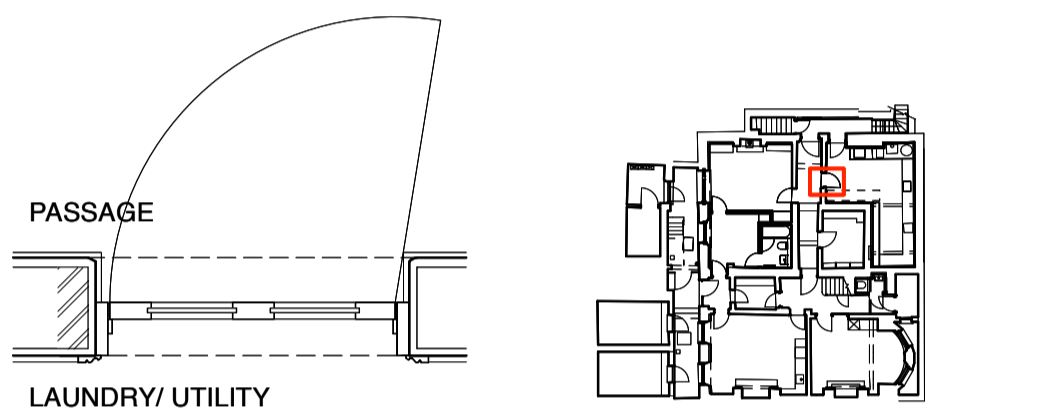


DB10

LAUNDRY/ UTILITY
NEW 4-PANELLED DOOR LEAF WITHOUT BEADS WITH SUPALUX SANDWICH TO PANELS TO ACHIEVE FD30 IN EXISTING OPENING
RENEW LININGS AND STOPS
NEW IRONMONGERY
PAINT FINISH

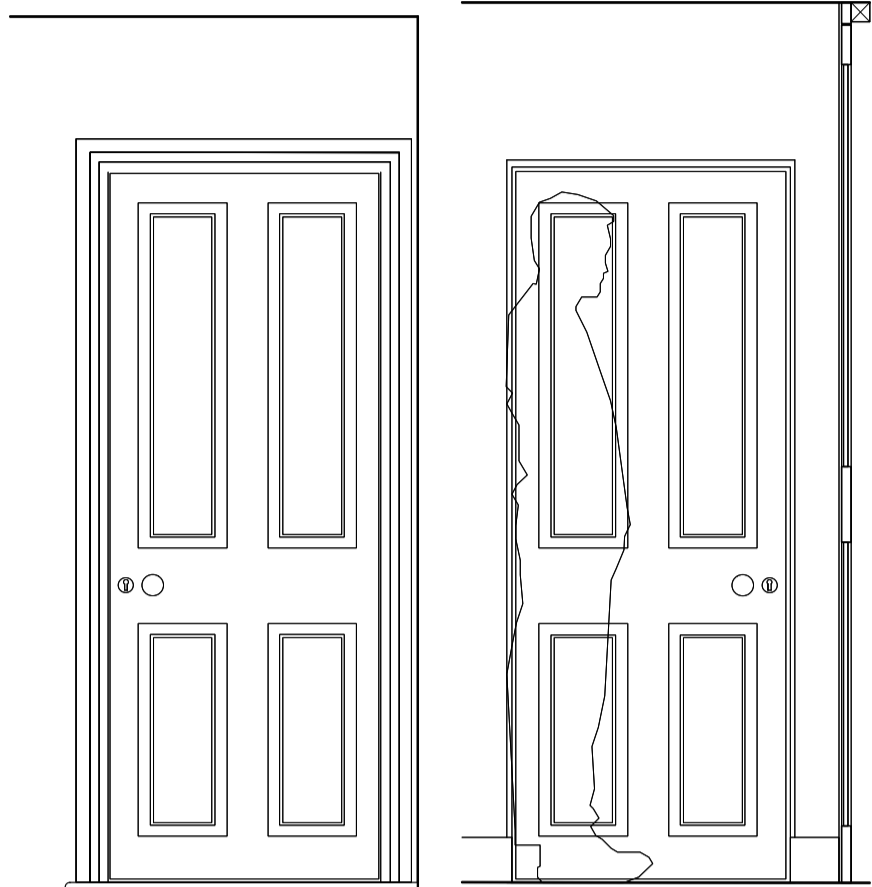


LAUNDRY/ UTILITY PASSAGE

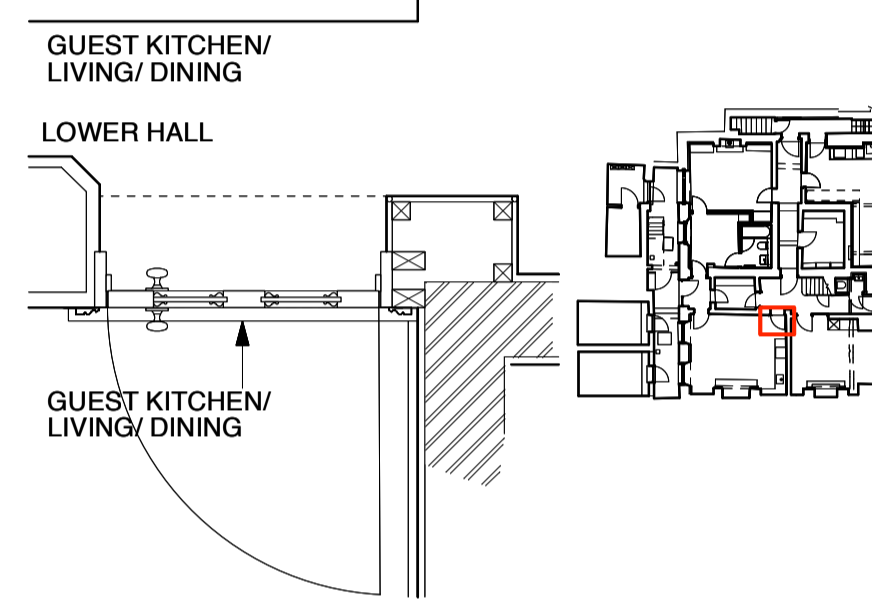


DB14

GUEST KITCHEN/ LIVING/ DINING
ADAPT EXISTING DOOR LEAF IN ALTERED OPENING
UPGRADE TO FD30
NEW IRONMONGERY
PAINT FINISH

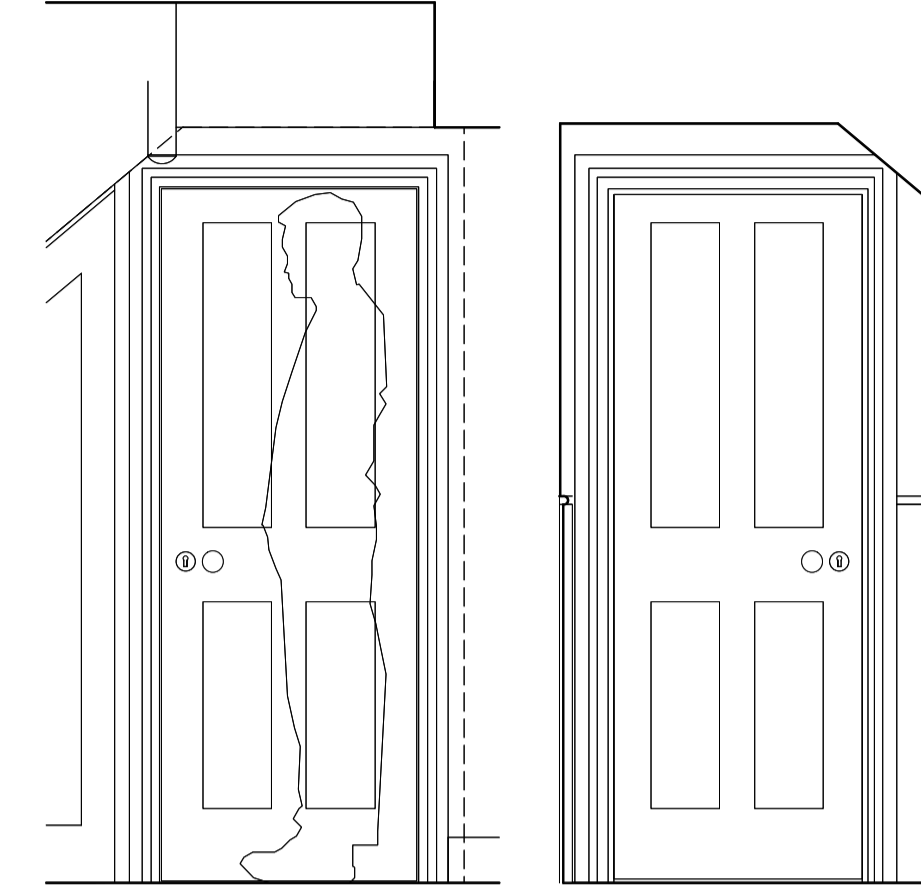


GUEST KITCHEN/ LIVING/ DINING LOWER HALL

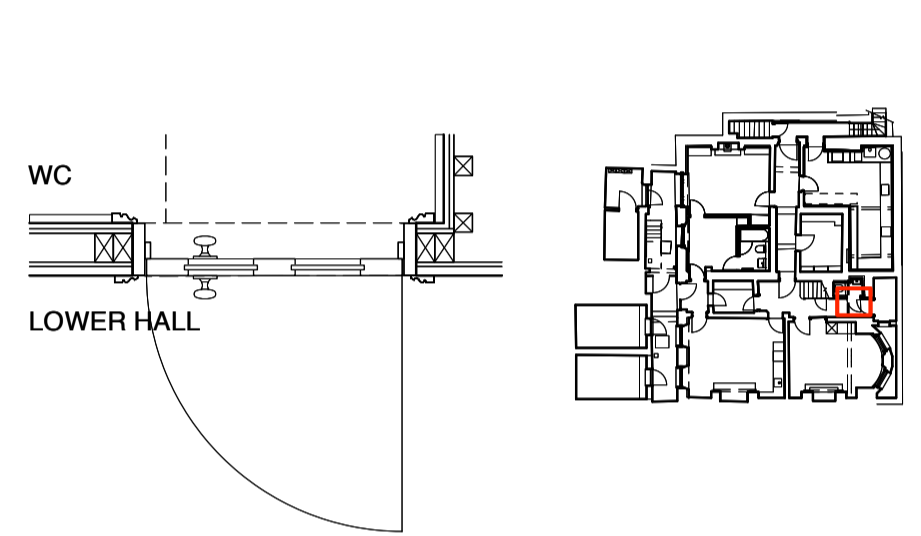


DB16

WC
NEW 4-PANELLED DOOR LEAF WITHOUT BEADS
NEW IRONMONGERY
PAINT FINISH

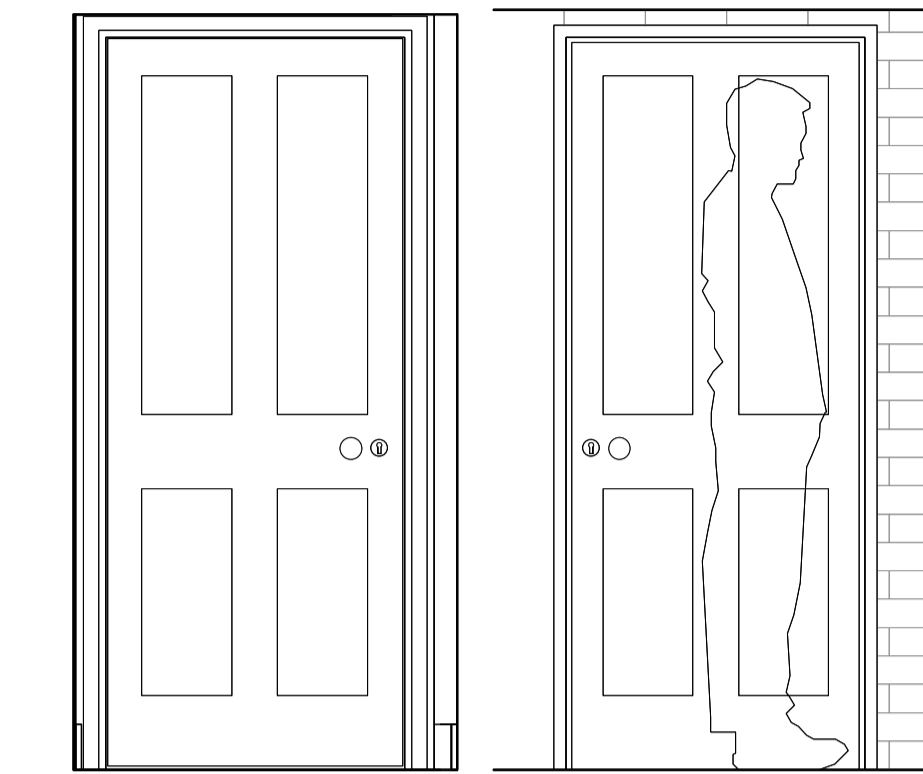


LOWER HALL WC

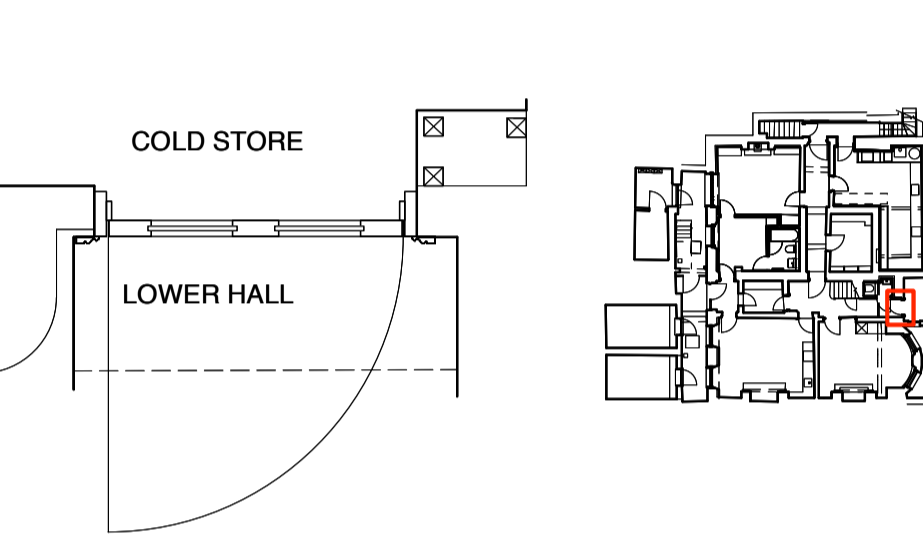


DB17

COLD STORE
NEW 4-PANELLED DOOR LEAF WITHOUT BEADS TO MATCH ORIGINAL
ASBESTOS PANELLED DOOR WITH SUPALUX SANDWICH TO PANELS TO ACHIEVE FD30
NEW IRONMONGERY
PAINT FINISH



LOWER HALL COLD STORE

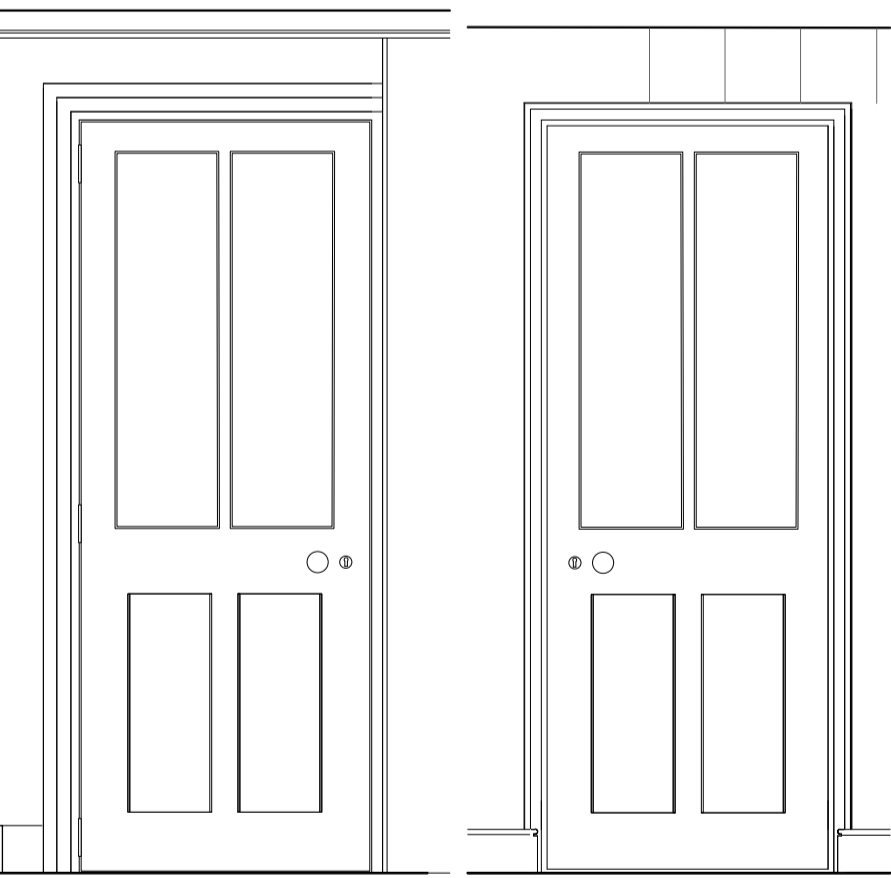


ELEVATION

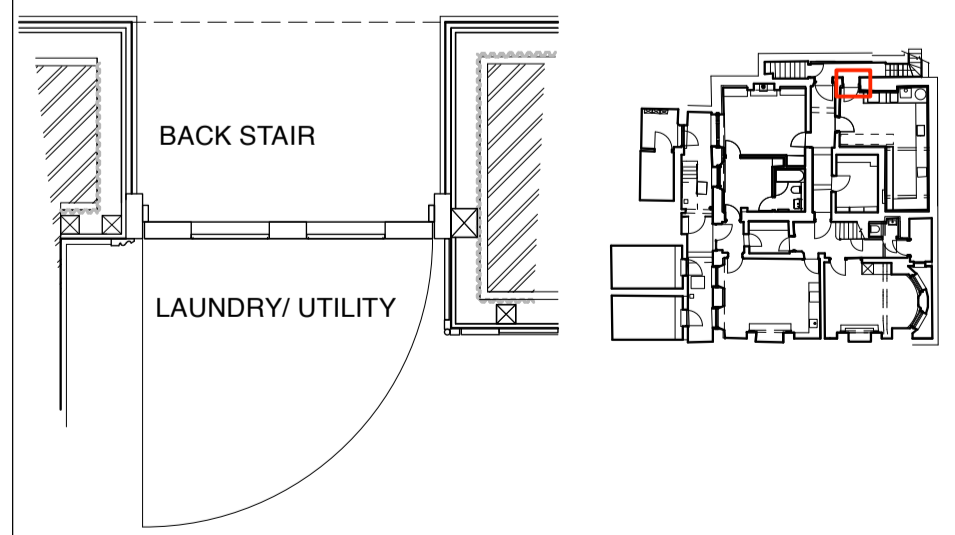
PLAN LOCATION

DB27

BACK STAIR/ LAUNDRY
SALVAGED HALF GLAZED LEAF IN NEW LININGS AND STOPS
NEW IRONMONGERY
PAINT FINISH

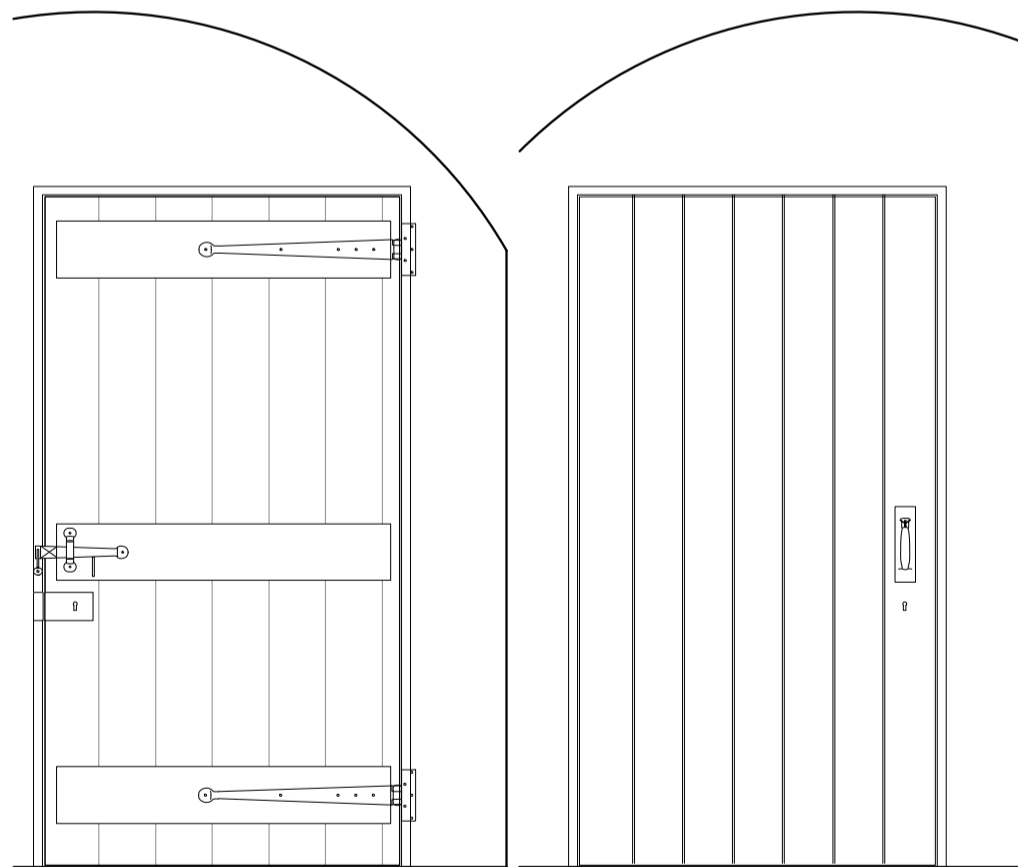


LAUNDRY/ UTILITY BACK STAIR

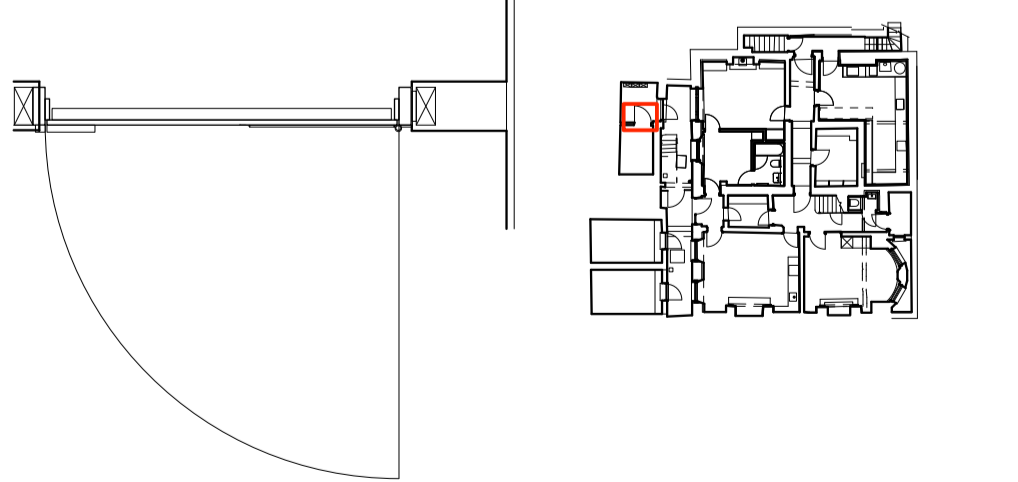


DB28

METER VAULT/ SOUTH STORE
NEW SW EDGED AND BATTENED DOOR
NEW LININGS AND STOPS
NEW IRONMONGERY INCLUDING STRAP HINGES, SUFFOLK LATCH AND RIM LOCK
PAINT FINISH

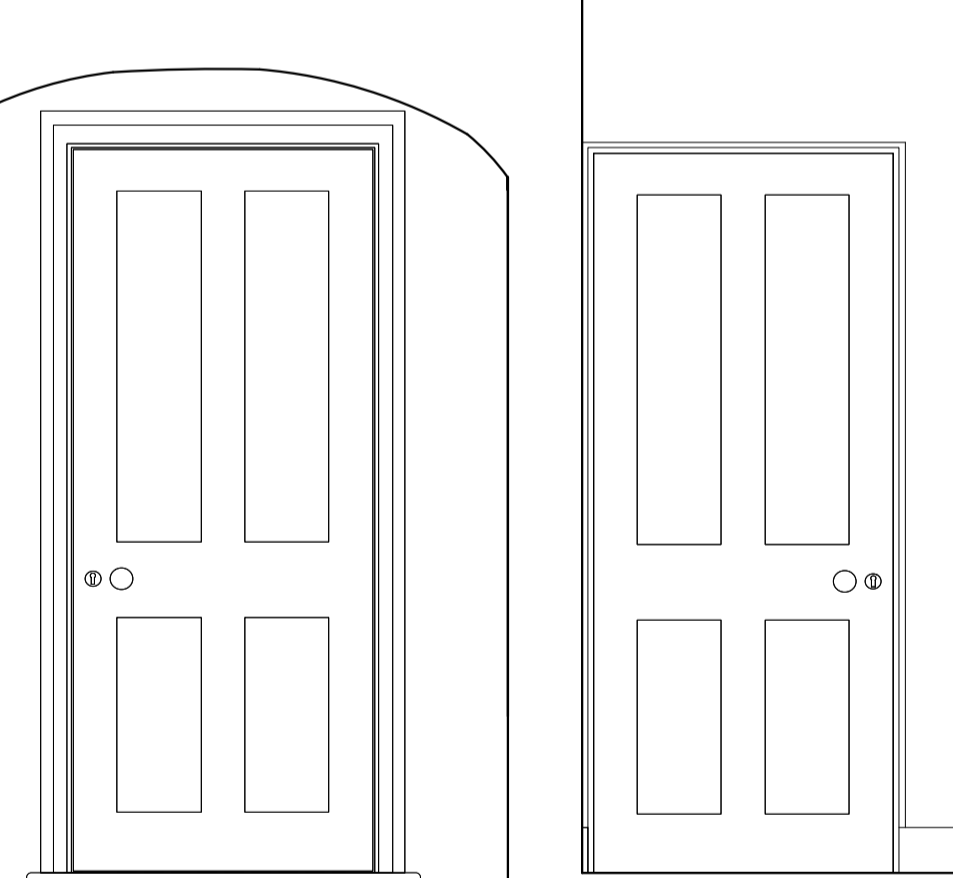


METER VAULT/ SOUTH STORE

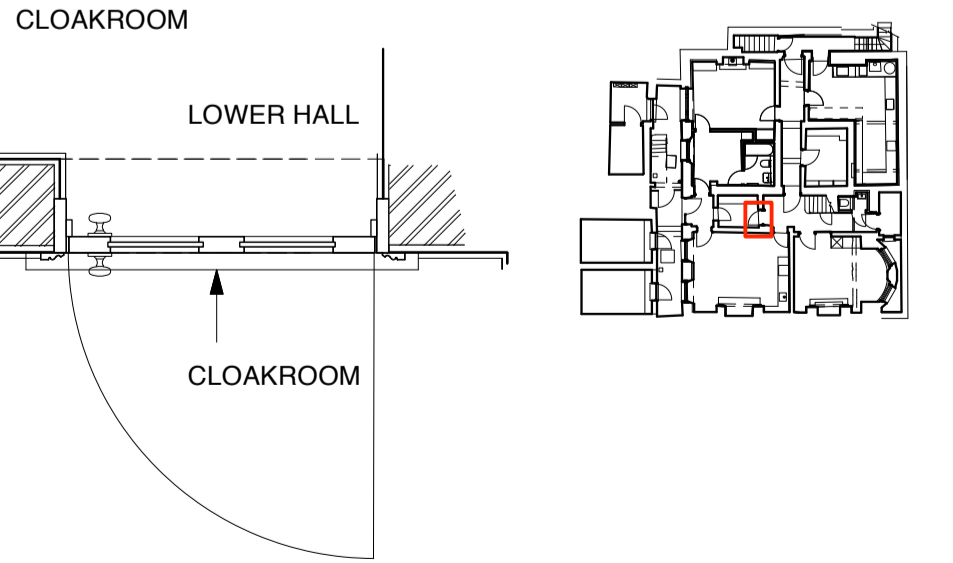


DB29

CLOAKROOM
NEW 4-PANELLED DOOR LEAF WITHOUT BEADS WITH SUPALUX SANDWICH TO PANELS TO ACHIEVE FD30
NEW IRONMONGERY
PAINT FINISH



CLOAKROOM LOWER HALL



Lisa Shell architects
25th Floor, 25 Abchurch Lane, London EC4N 3DF
www.lisashellarchitects.co.uk

7 THE GROVE, HIGHGATE, LONDON N6 6JU

NEW & ALTERED INTERNAL BASEMENT DOORS SHEET 2
GRO7 / CO-P / 202

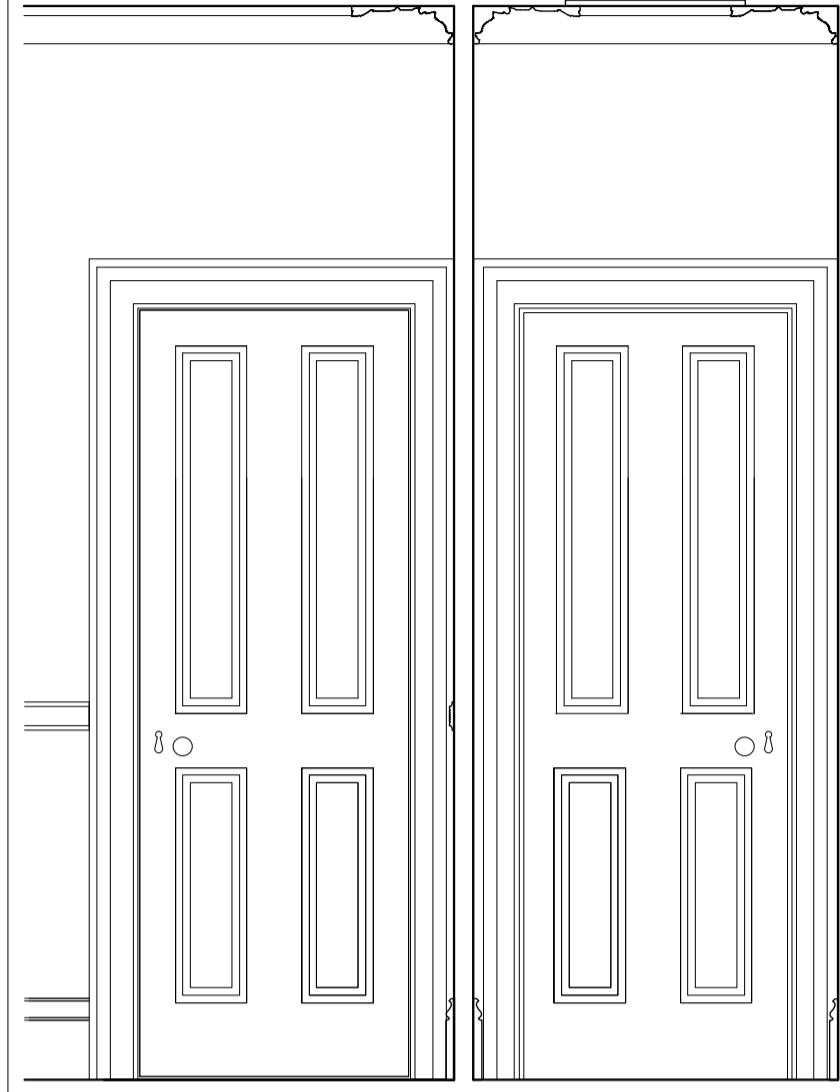
1:20/5 @ A1; 1:10/2.5 @ DE
DO NOT SCALE FROM THIS DRAWING
PREFER ALL DISCREPANCIES TO ARCHITECT

REVISIONS/ ISSUE
01/06/2023
ISSUE TO PLANNING
FOR DOC3: DETAIL

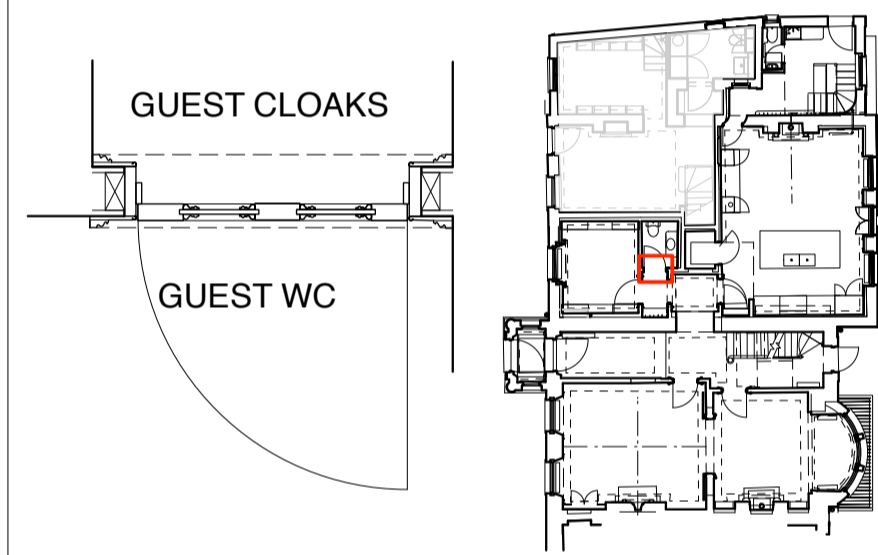
NEW & ALTERED INTERNAL GROUND FLOOR DOORS

DG04

QUEST WC
REUSE EXISTING PANELED BEADED DOOR LEAF FROM WC DG10. INCREASE IN WIDTH AND HEIGHT TO SUIT NEW LININGS, STOPS AND ARCHITRAVES TO MATCH DG03, NEW IRONMONGERY, PAINT FINISH

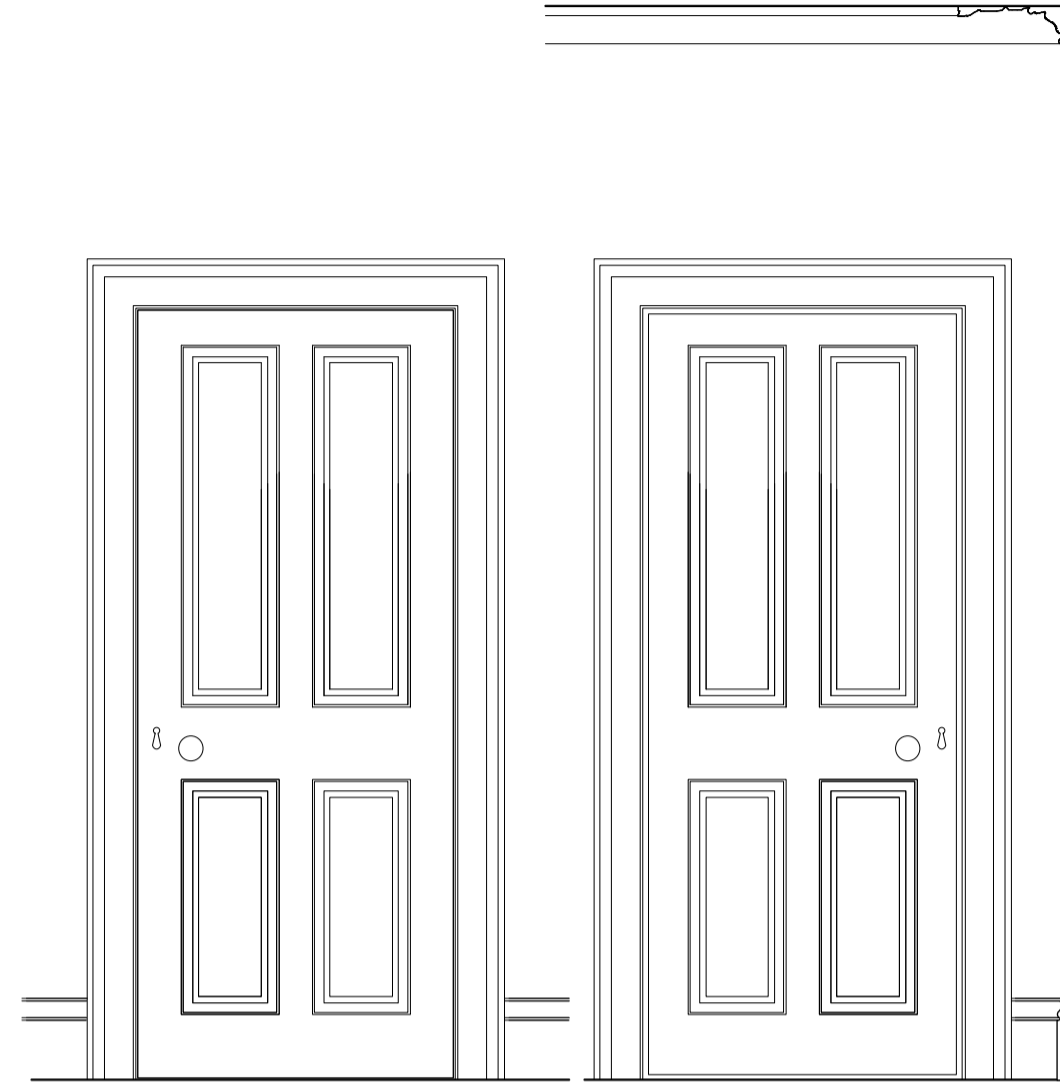


GUEST WC GUEST CLOAKS

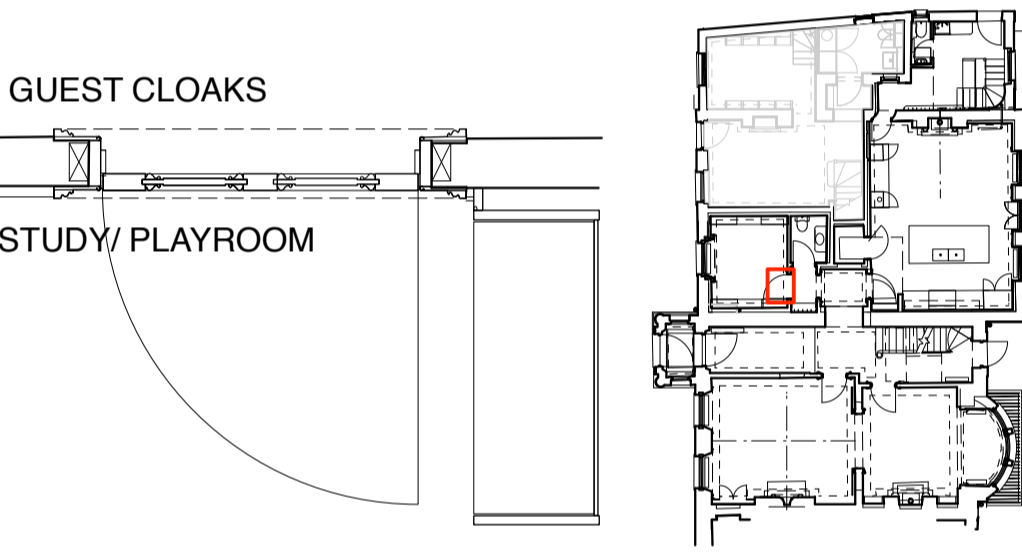


DG05

STUDY/ PLAYROOM
REUSE EXISTING PANELED BEADED DOOR LEAF FROM KITCHEN DG03. UPGRADE TO FD30 NEW LININGS, STOPS AND ARCHITRAVES TO MATCH DG03, NEW IRONMONGERY, PAINT FINISH

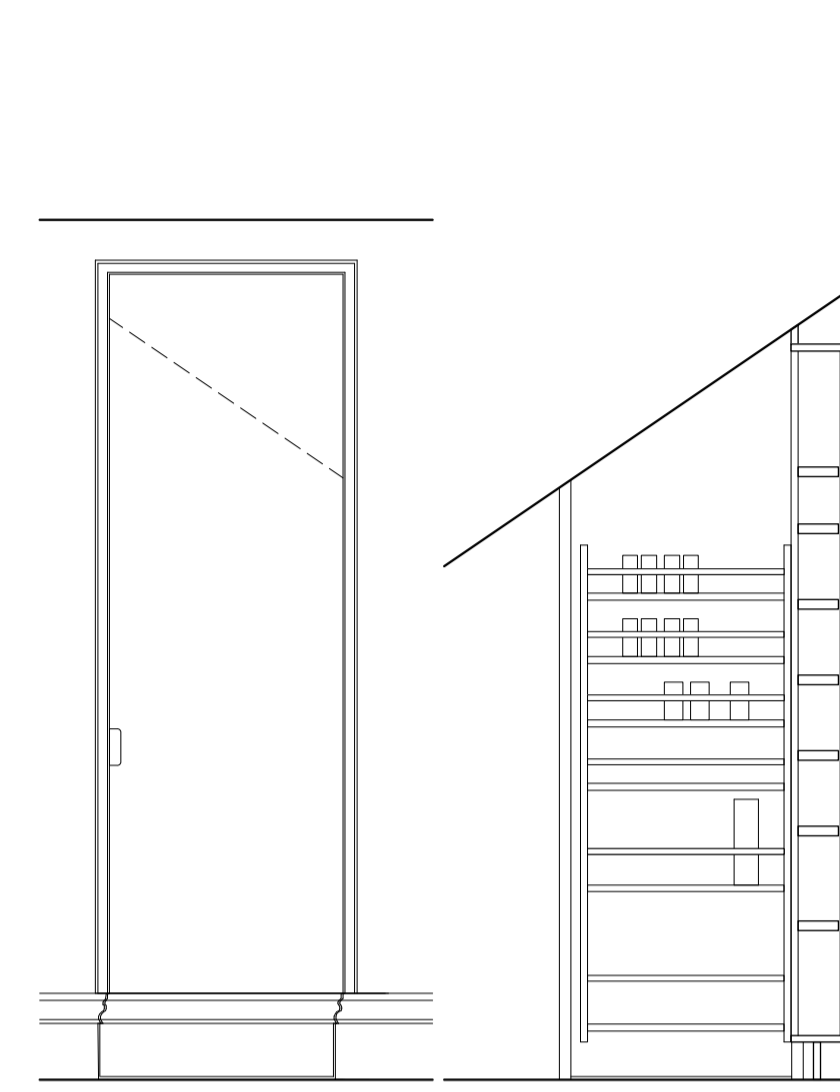


STUDY/ PLAYROOM GUEST CLOAKS

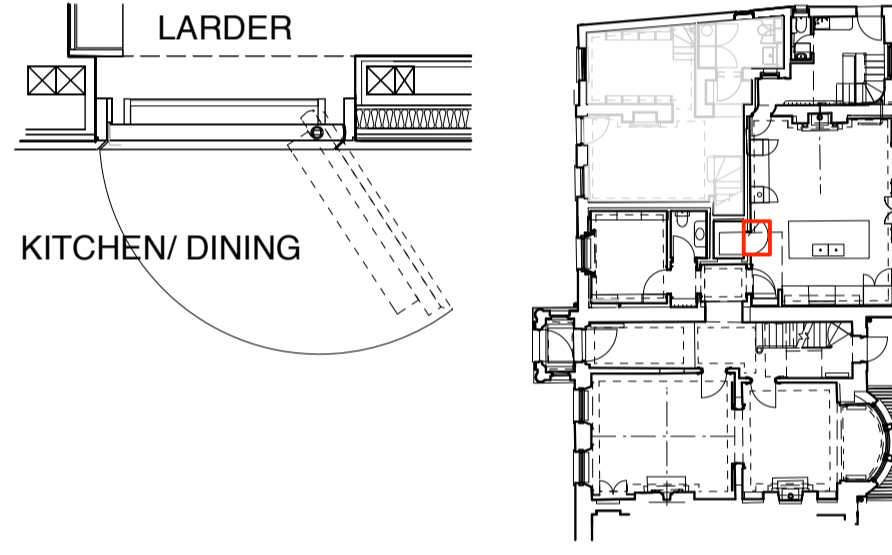


DG07

LARDER
NEW FLUSH SOLID CORE DOOR LEAF WITH REBATED LIPPED EDGES AND PLANTED SKIRTING TO DETAIL. REBATE TO MOULDINGS TO ALLOW OPENING. 32MM THICK LININGS WITH CURVED REBATE. INTERNAL DOOR RACKING WITH FITTED JOINERY. CENTRE HUNG PIVOT SET FLUSH IN FLOOR HEAD. SMALL EDGE PULL. SOLID BRASS. DEAD-FIXING ROLLER LATCH.

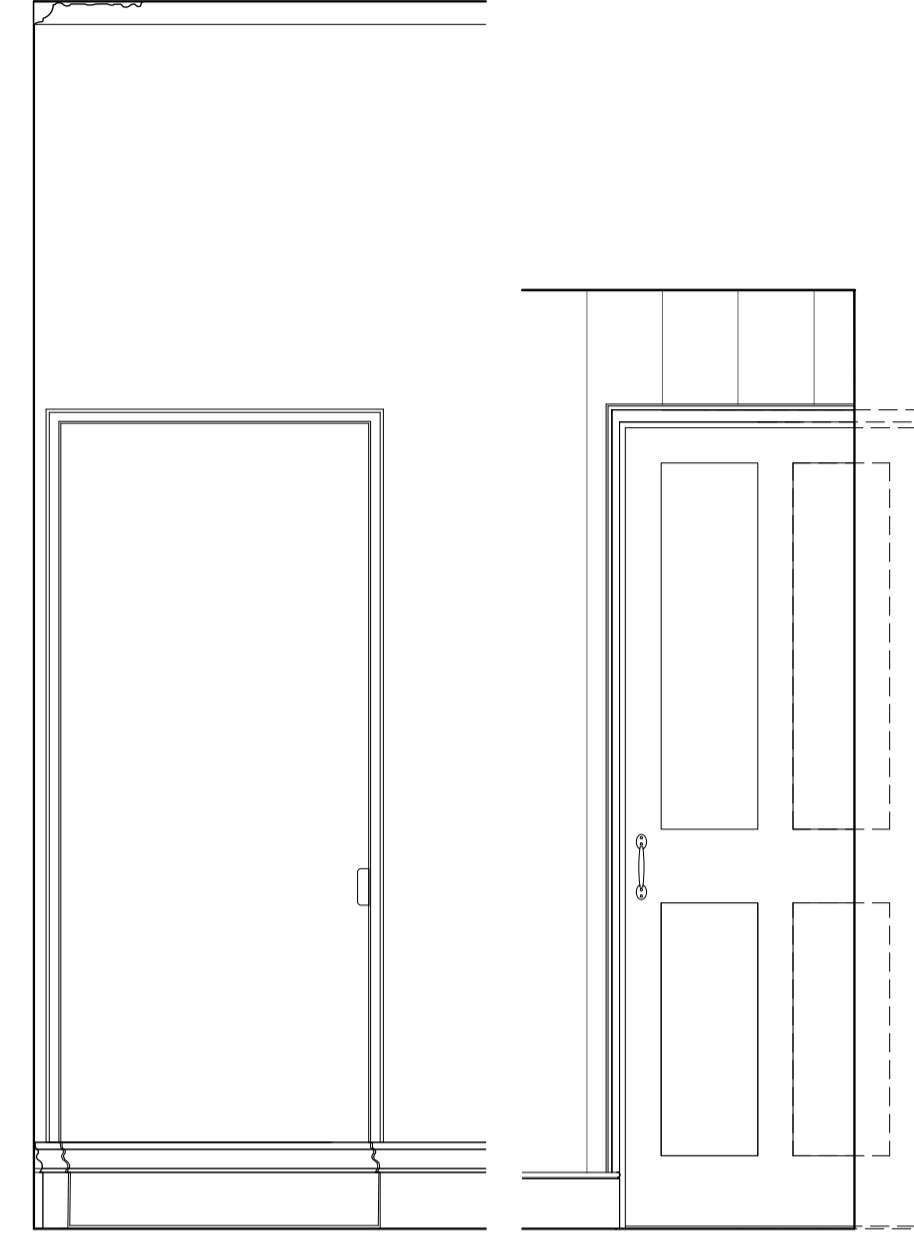


KITCHEN/ DINING LARDER

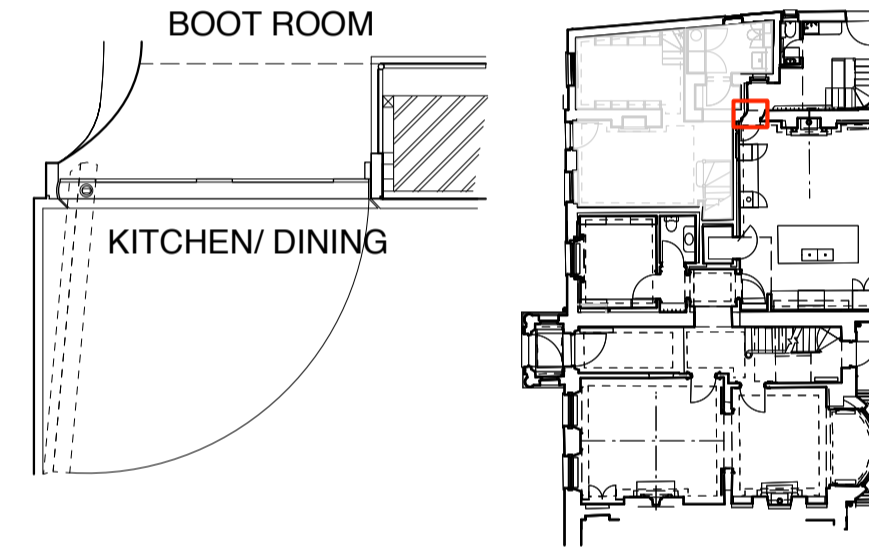


DG13

BOOT ROOM
NEW FLUSH SOLID CORE DOOR LEAF WITH REBATED LIPPED EDGES, PLANTED SKIRTING AND PANELED FRAMING TO DETAIL. 32MM THICK LININGS WITH CURVED REBATE. CENTRE HUNG PIVOT SET FLUSH IN FLOOR HEAD. SMALL EDGE PULL. SOLID BRASS AND PULL HANDLE. DEAD-FIXING ROLLER LATCH.

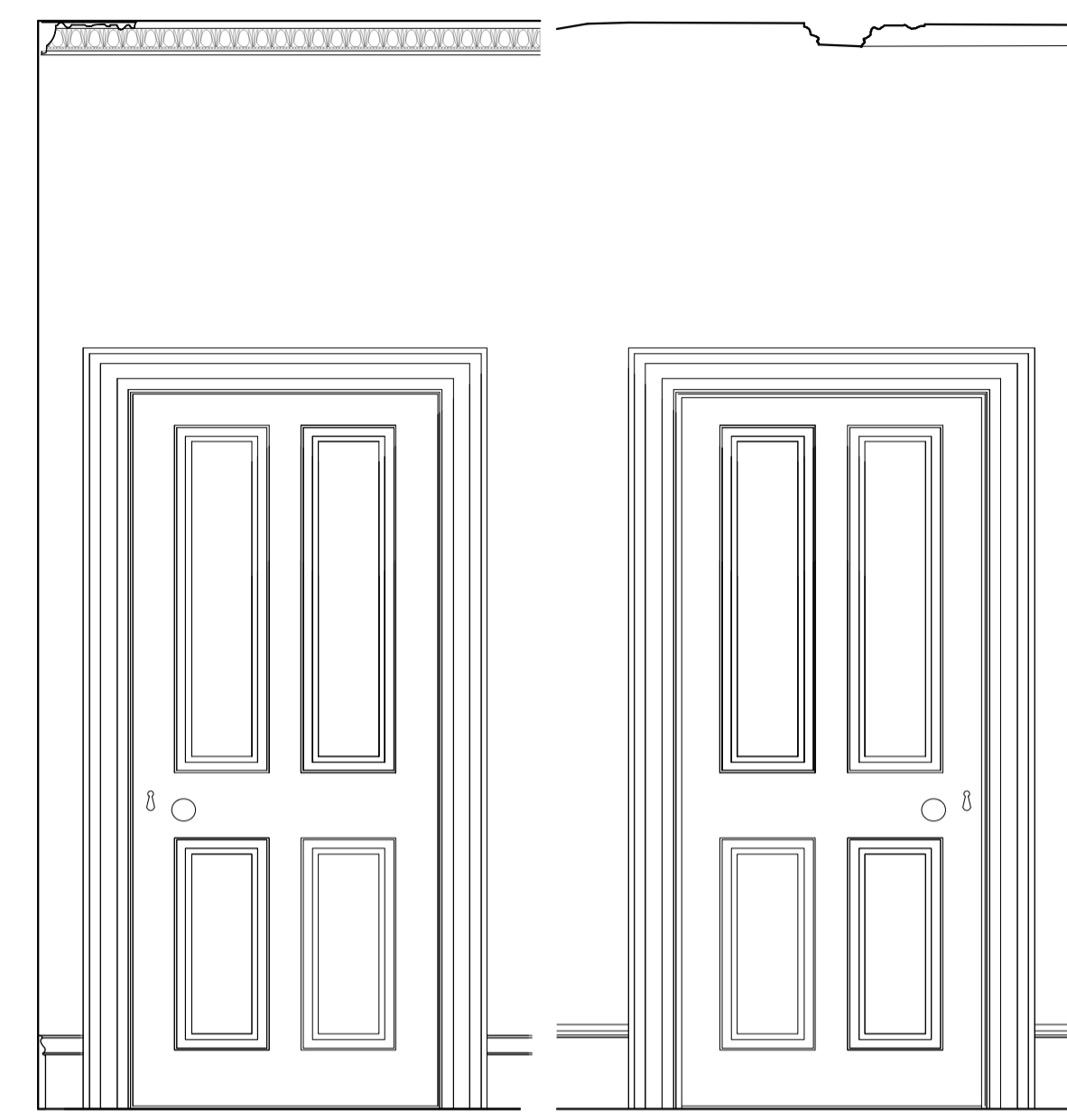


KITCHEN/ DINING BOOT ROOM

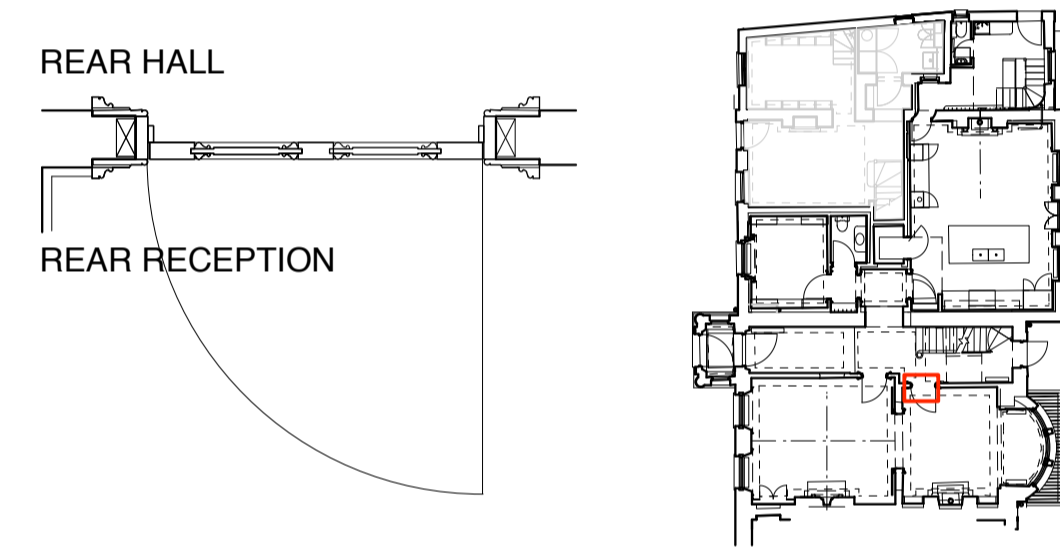


DG19

REAR RECEPTION ROOM
REUSE EXISTING PANELED BEADED DOOR LEAF FROM ORIGINAL FRONT RECEPTION ROOM DG22. UPGRADE TO FD30 NEW LININGS, STOPS AND ARCHITRAVES TO MATCH DG21, NEW IRONMONGERY, PAINT FINISH



REAR RECEPTION REAR HALL

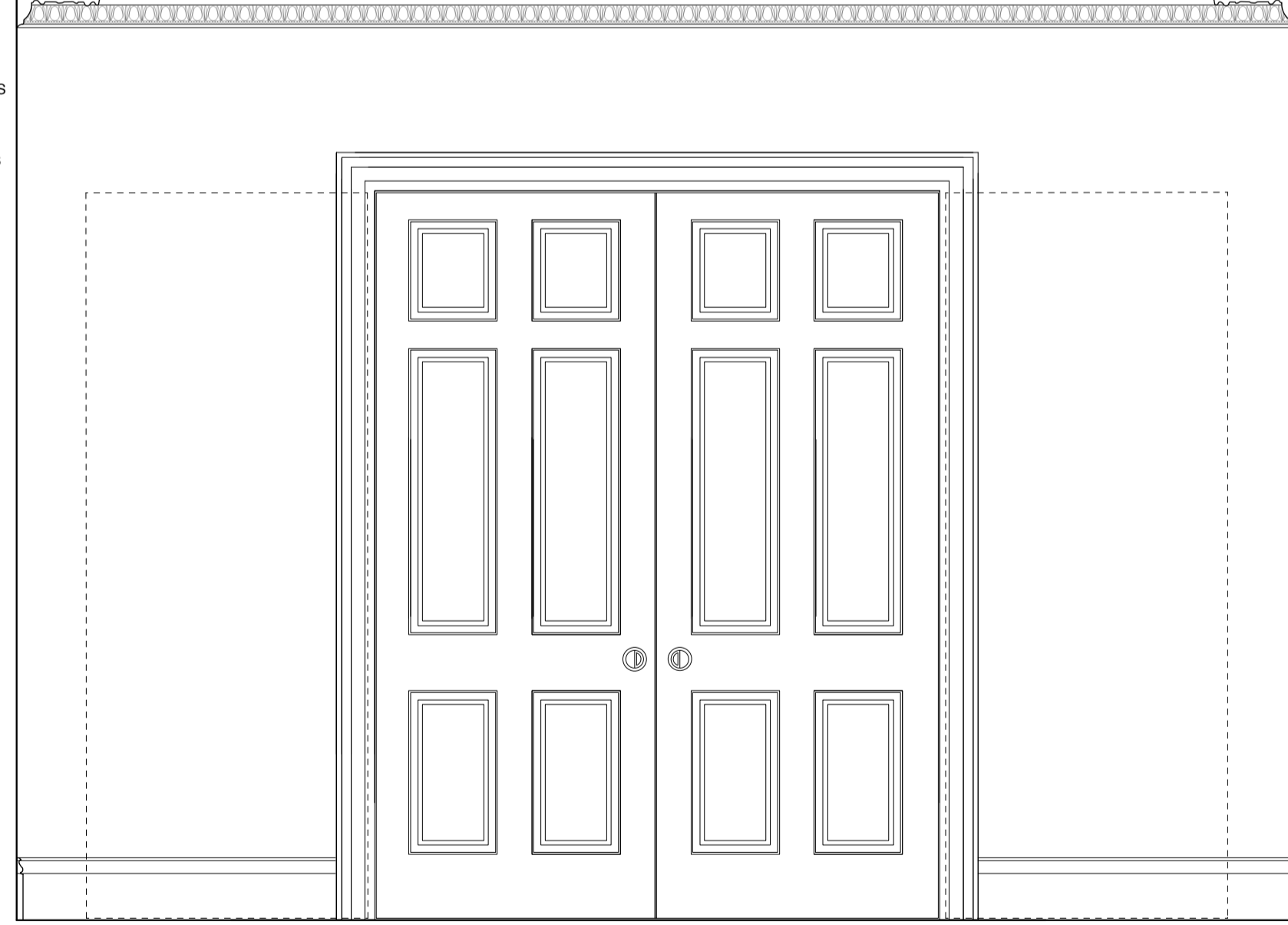


ELEVATION

PLAN LOCATION

DG20

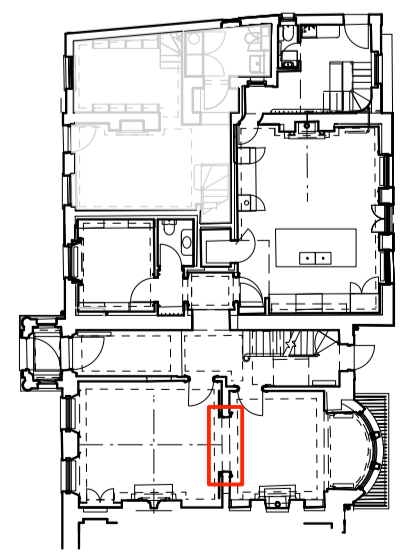
RECEPTION ROOMS
NEW BEADED PANELED DOUBLE DOORS IN NEW OPENING. BEADS TO MATCH EXISTING NON FF. REBATED MEETING STILES. NEW LININGS, STOPS AND ARCHITRAVES TO MATCH EXISTING. PARLAMENT HINGES. FLUSH RING HANDLES.



FRONT RECEPTION ROOM

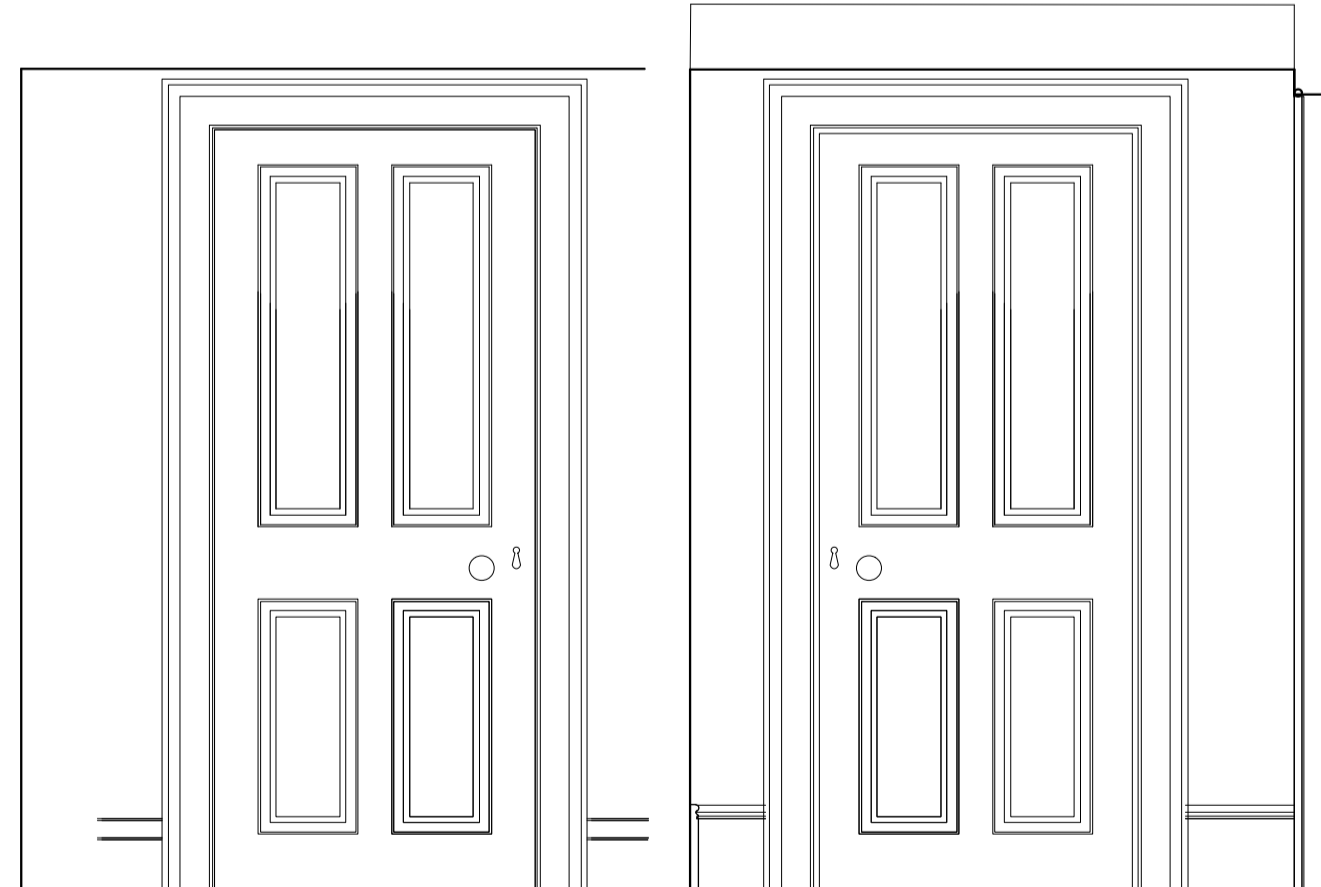
REAR RECEPTION ROOM

FRONT RECEPTION ROOM



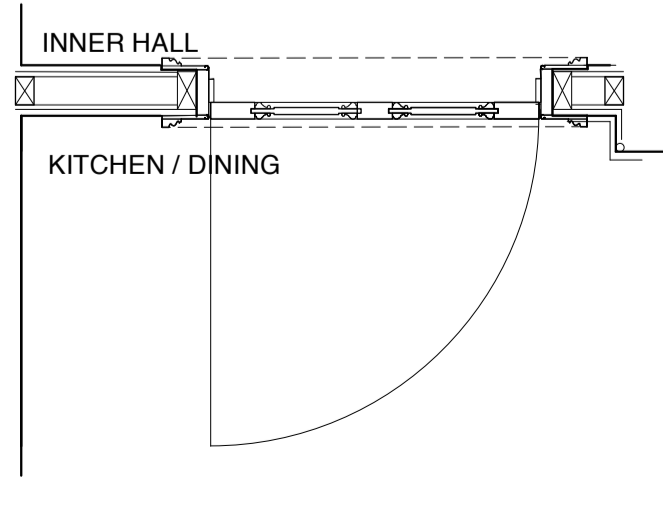
DG23

KITCHEN/ DINING
REUSE EXISTING PANELED BEADED DOOR LEAF FROM KITCHEN DG03. UPGRADE TO FD30 NEW LININGS, STOPS AND ARCHITRAVES TO MATCH DG03, NEW IRONMONGERY, PAINT FINISH



KITCHEN / DINING

INNER HALL

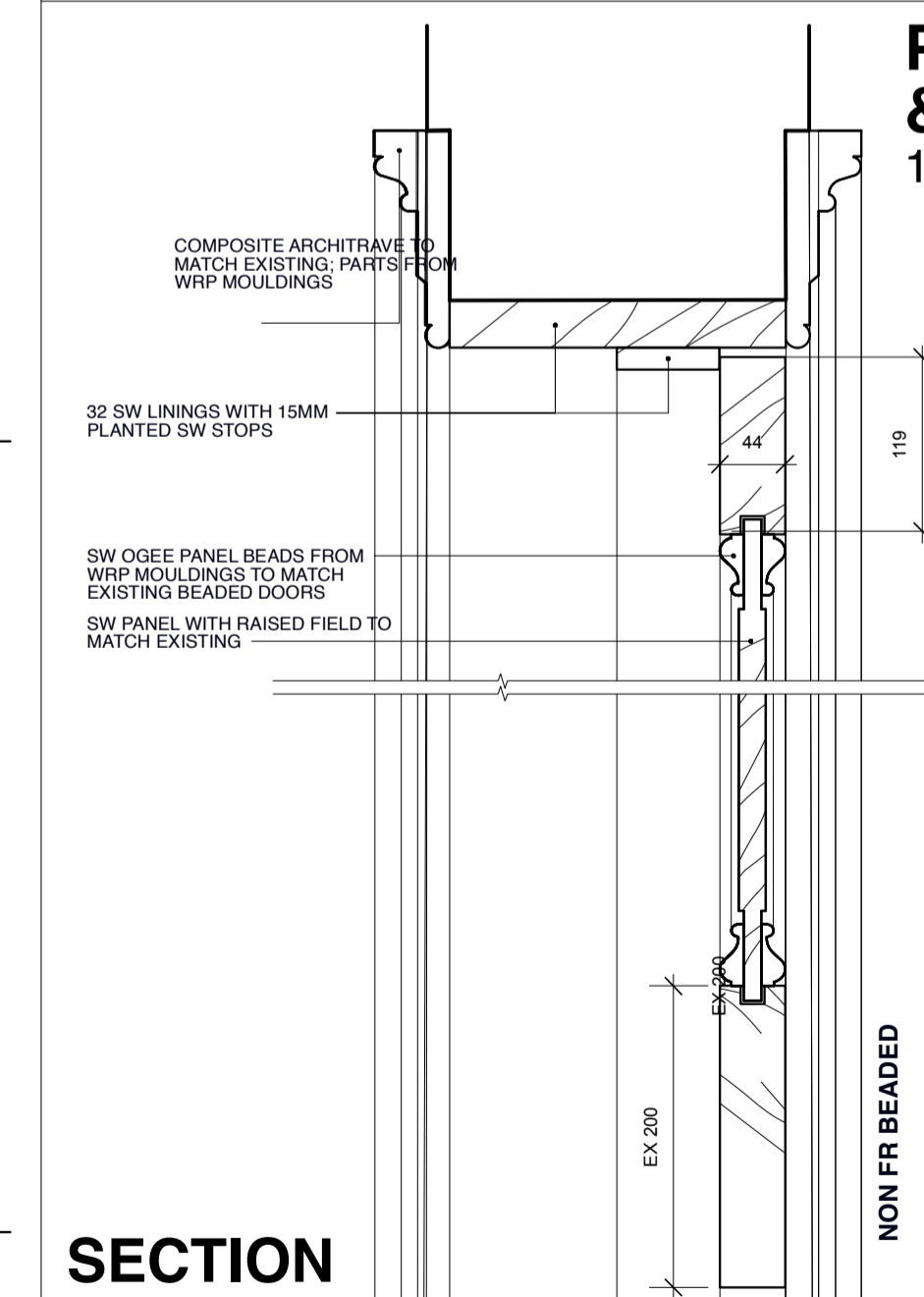


ELEVATION

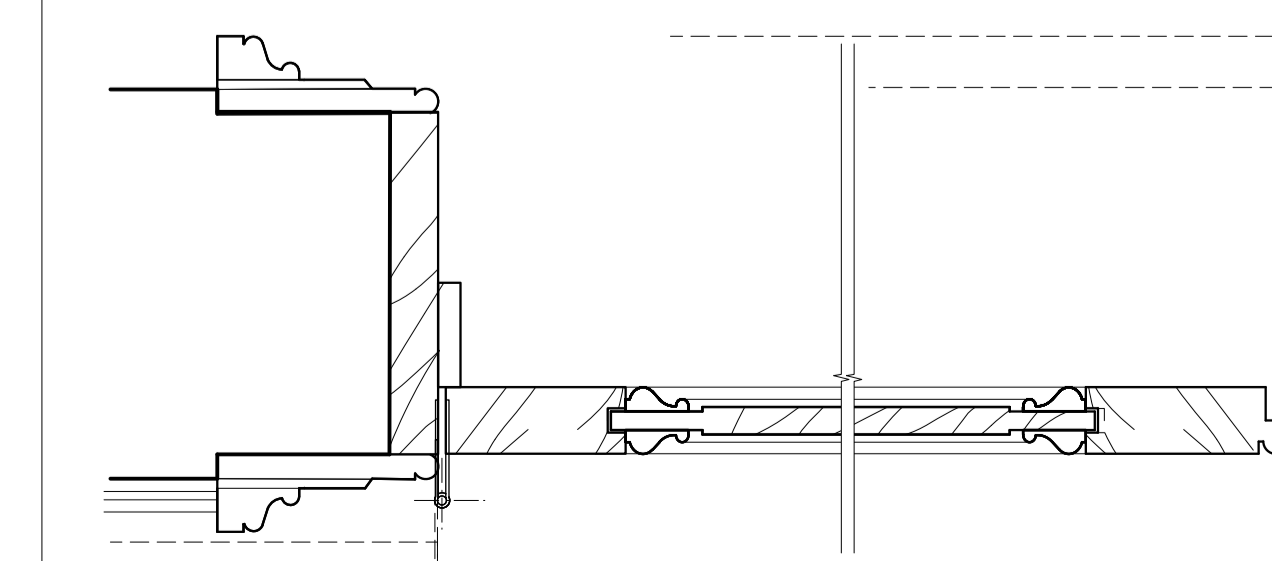
PLAN LOCATION

TYPICAL DETAILS

PANELED DOOR & MOULDINGS 1:5 @ A1



SECTION

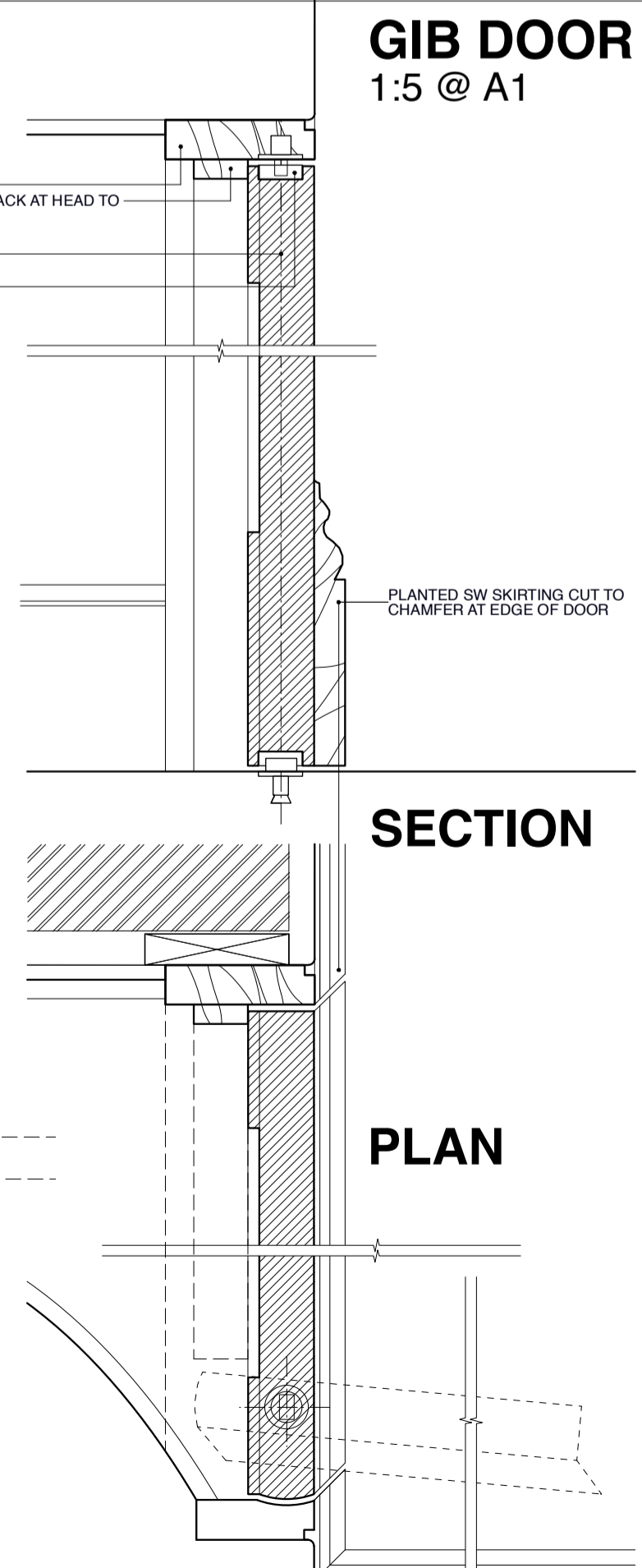


PLAN

REL 7253 Standard Duty Centre Hung Pivot Set

- Centre hung pivot set consisting of a brass plate mounted REL 7253 bottom post and a steel frame mounted REL 7253 top post
- Door thickness minimum 40mm
- Pivot distance 40mm minimum from the jamb in the centre of the paneled door
- Requires a radius to the head edge of the door - 40mm minimum recommended
- Clearance from the bottom edge of the door to the floor adjustable from 5mm to 10mm by varying the depth of the mortise in the bottom rail of the door
- For clearance distance in excess of 10mm consult the site office
- Maximum Load 130kilo

GIB DOOR 1:5 @ A1



SECTION

PLAN

NEW & ALTERED INTERNAL FIRST FLOOR DOORS

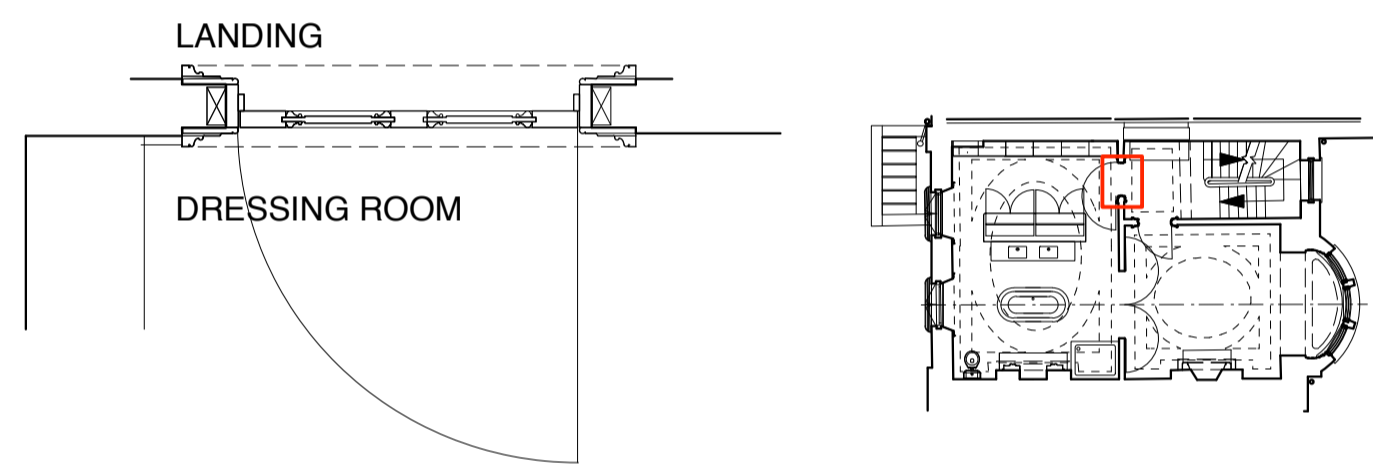
PLAN
LOCATION
ELEVATION

D102
DRESSING ROOM & BATHROOM
RE-USE EXISTING BEADED 4-PANELLED DOOR LEAF D105
UPGRADE TO FDS30
IN EXISTING OPENING
EXISTING LININGS AND STOPS
NEW IRONMONGERY
PAINT FINISH



DRESSING ROOM

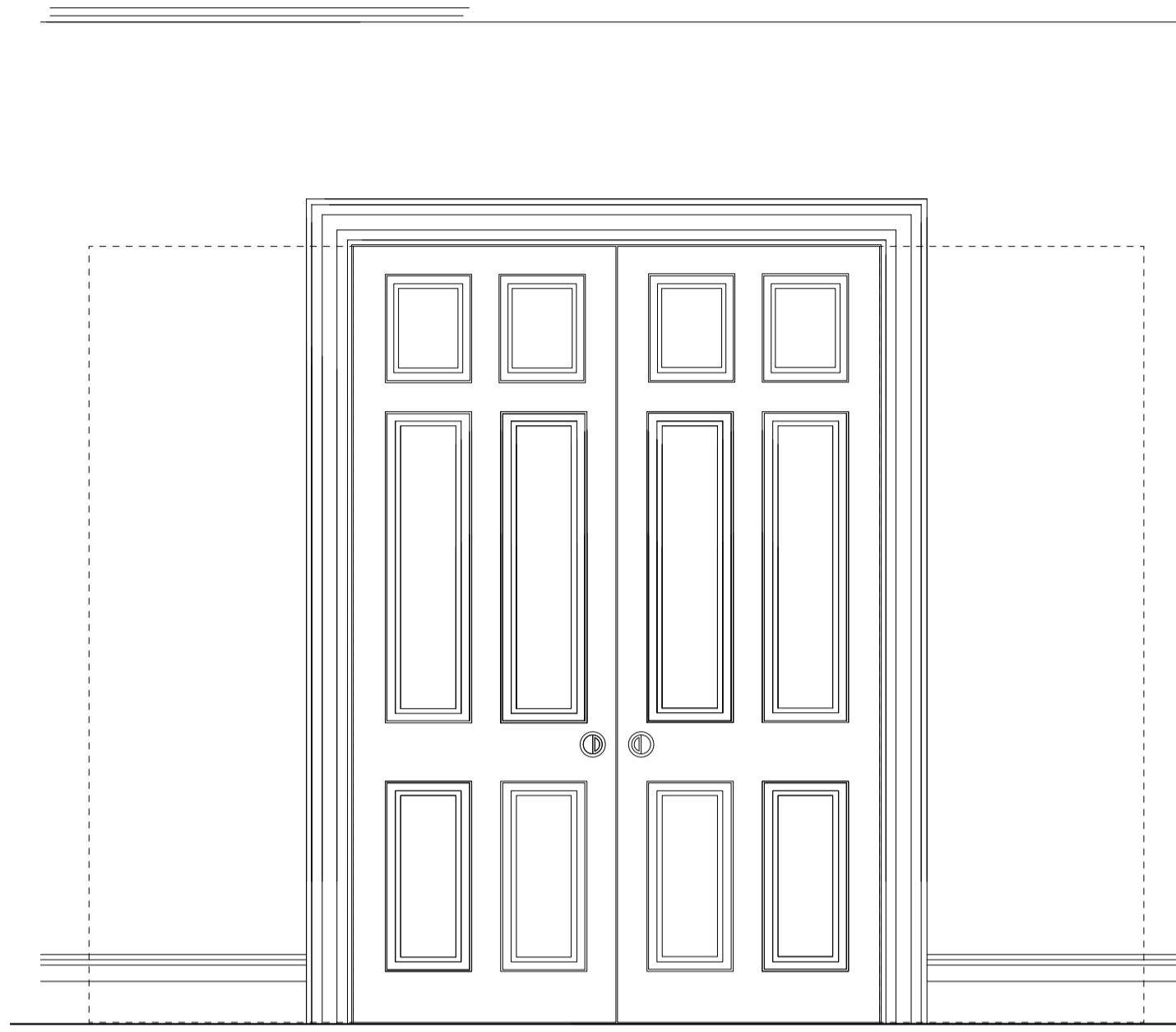
LANDING



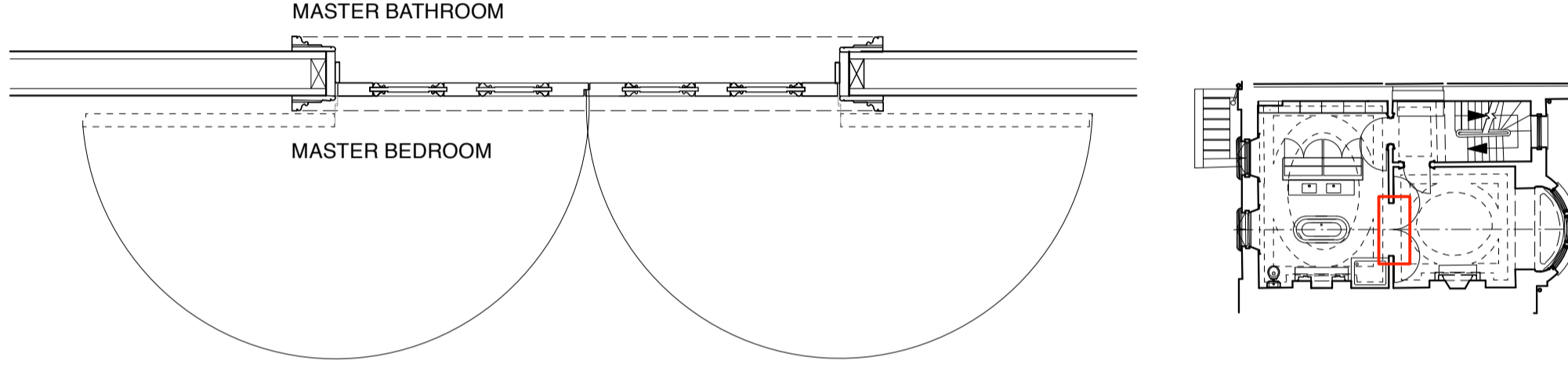
LANDING

DRESSING ROOM

D104
BEDROOM 1
NEW BEADED PANELLED DOUBLE DOORS IN NEW OPENING
BEADS TO MATCH EXISTING
NON FP
REBATED MEETING STILES
NEW LININGS, STOPS AND ARCHITRAVES TO MATCH EXISTING
PARLAMENT HINGES
FLUSH RING HANDLES
REFER TO GR07/CO-P/201 FOR DETAIL



MASTER BEDROOM



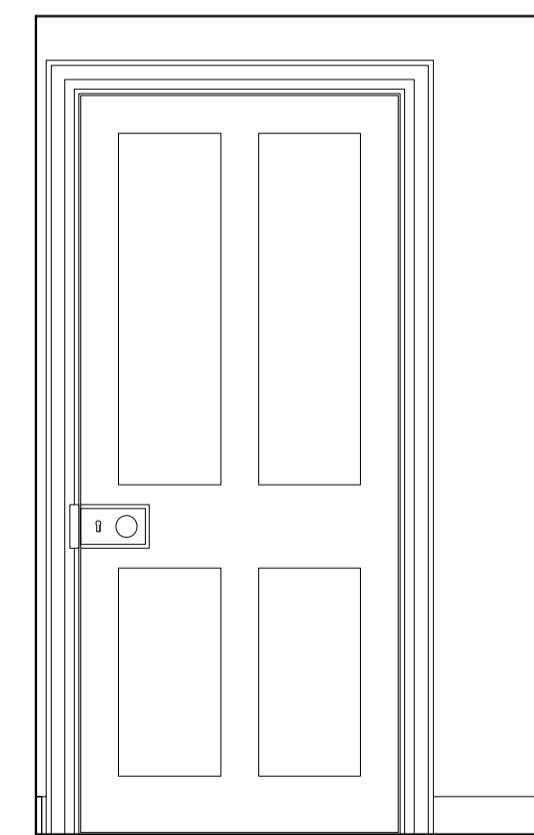
MASTER BATHROOM

MASTER BEDROOM

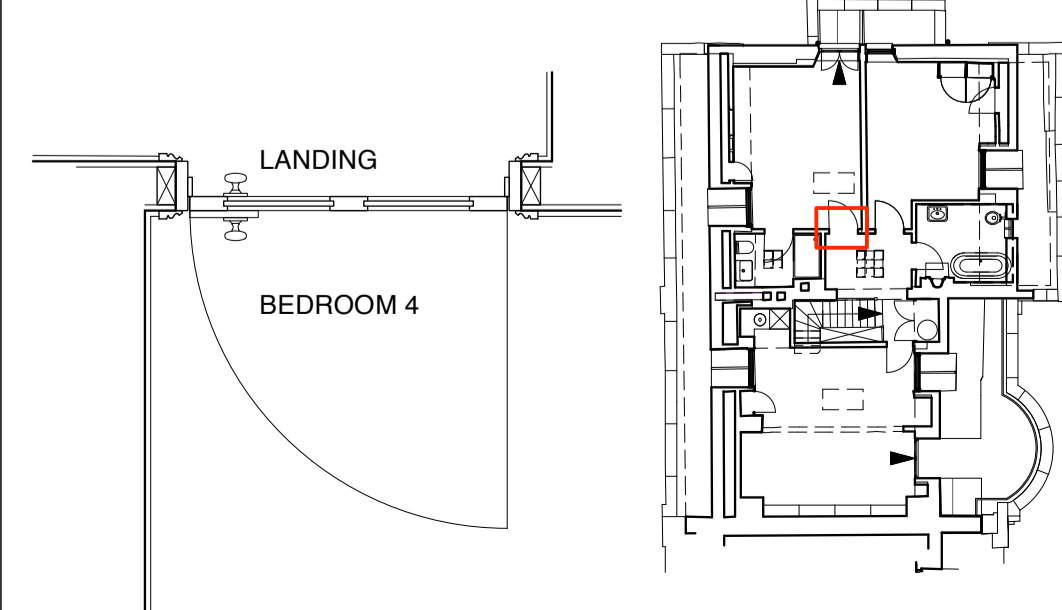
NEW & ALTERED INTERNAL THIRD FLOOR DOORS

PLAN
LOCATION
ELEVATION

D303
BEDROOM 4
NEW UNBEADED 4-PANELLED DOOR LEAF WITH SUPALUX SANDWICH TO
ACHIEVE FDS30
IN NEW OPENING
NEW LININGS AND STOPS
NEW IRONMONGERY
PAINT FINISH
REF DETAIL ON DRAWING GR07/CO-P/201



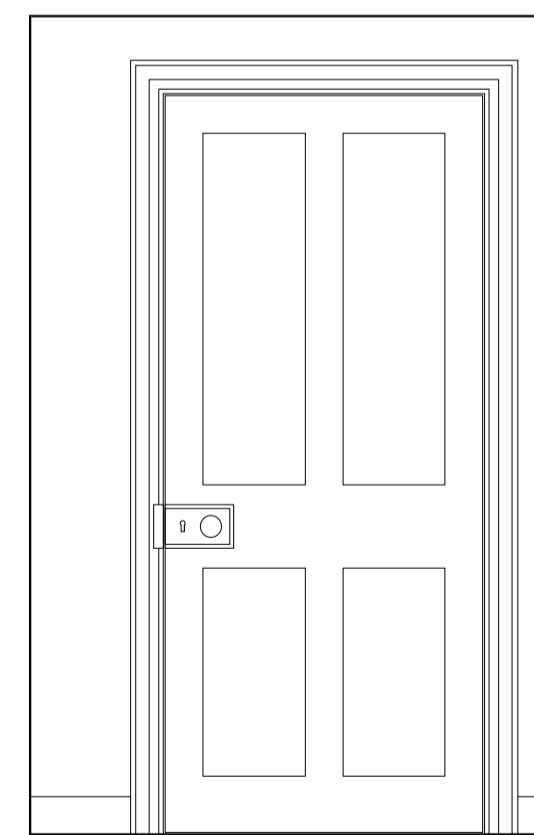
BEDROOM 4



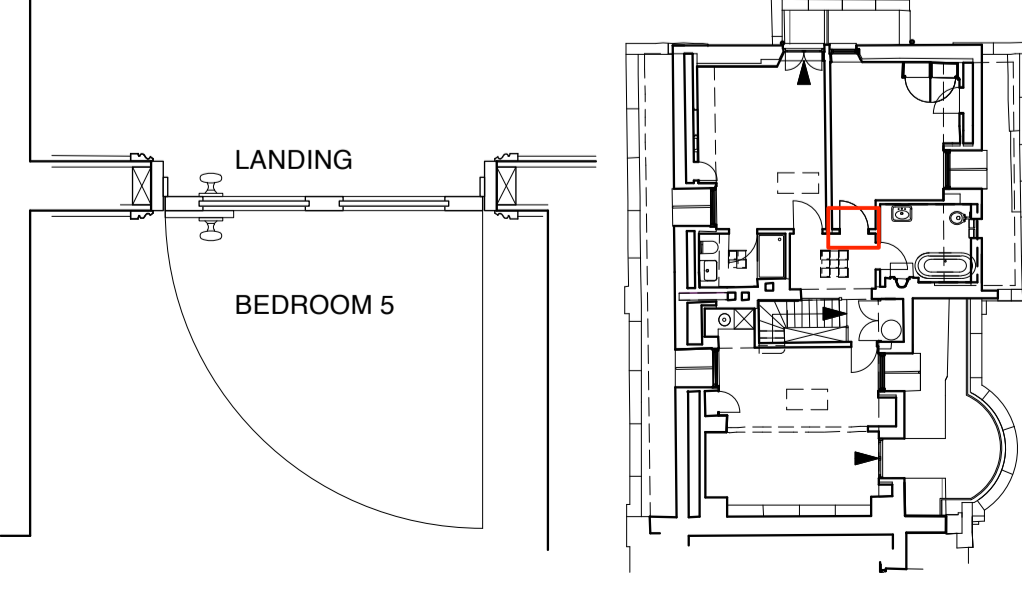
LANDING

BEDROOM 4

D306
BEDROOM 5
NEW UNBEADED 4-PANELLED DOOR LEAF WITH SUPALUX SANDWICH TO
ACHIEVE FDS30
IN NEW OPENING
NEW LININGS AND STOPS
NEW IRONMONGERY
PAINT FINISH
REF DETAIL ON DRAWING GR07/CO-P/201



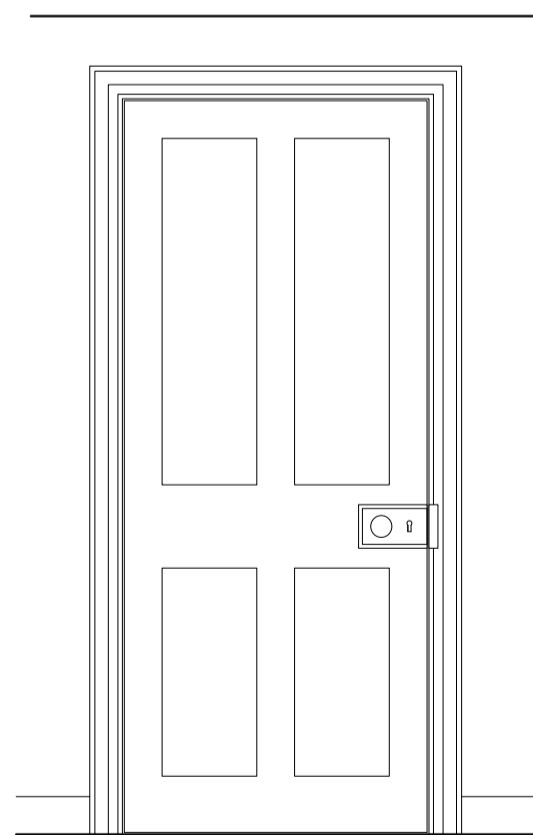
BEDROOM 5



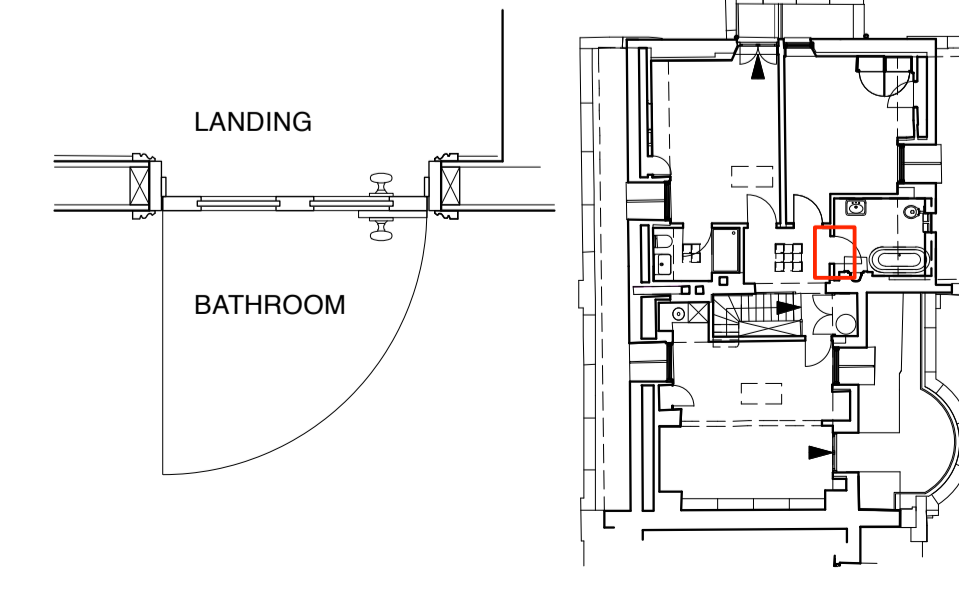
LANDING

BEDROOM 5

D307
BATHROOM
RE-USE EXISTING UNBEADED 4-PANELLED DOOR LEAF D301
IN NEW OPENING
NEW LININGS AND STOPS
NEW IRONMONGERY
PAINT FINISH



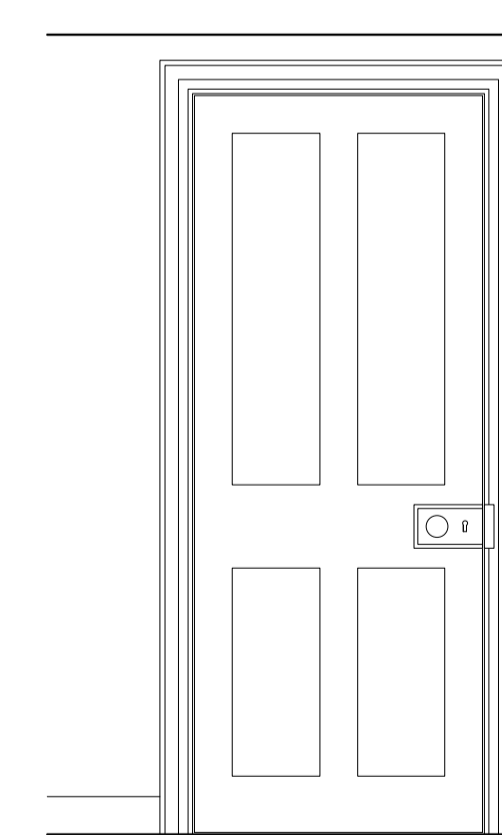
BATHROOM



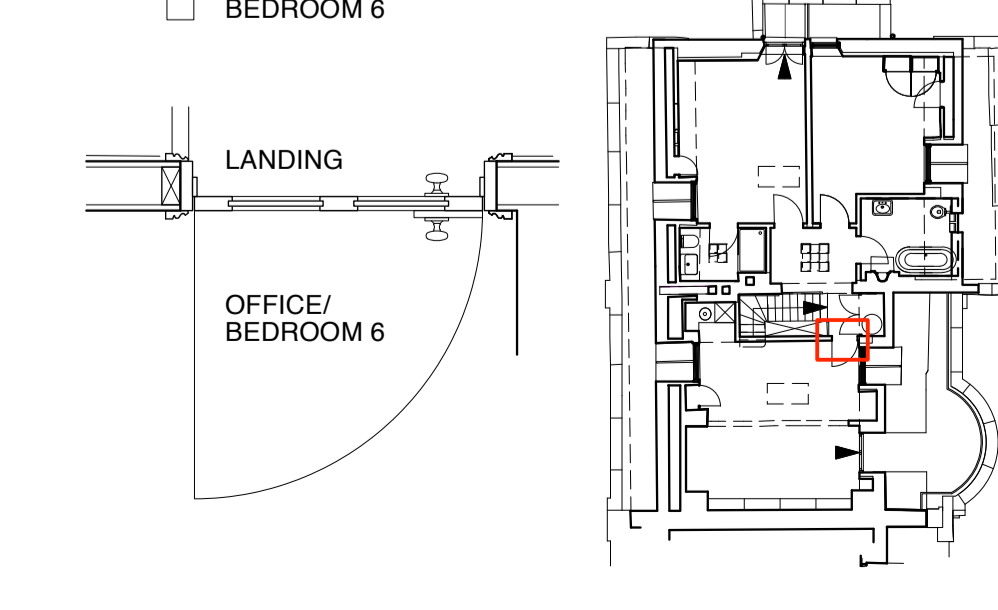
LANDING

BATHROOM

D309
OFFICE/ BEDROOM 6
NEW UNBEADED 4-PANELLED DOOR LEAF WITH SUPALUX SANDWICH TO
ACHIEVE FDS30
IN NEW OPENING
NEW LININGS AND STOPS
NEW IRONMONGERY
PAINT FINISH
REF DETAIL ON DRAWING GR07/CO-P/201



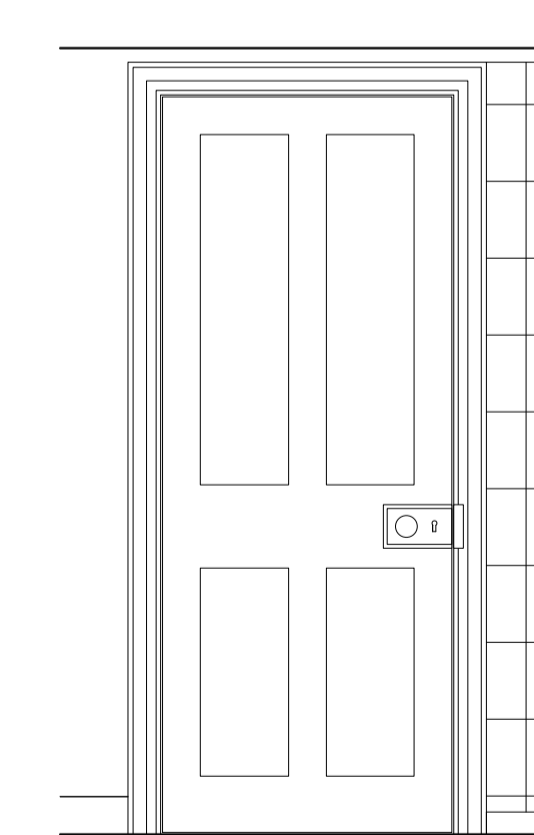
OFFICE/
BEDROOM 6



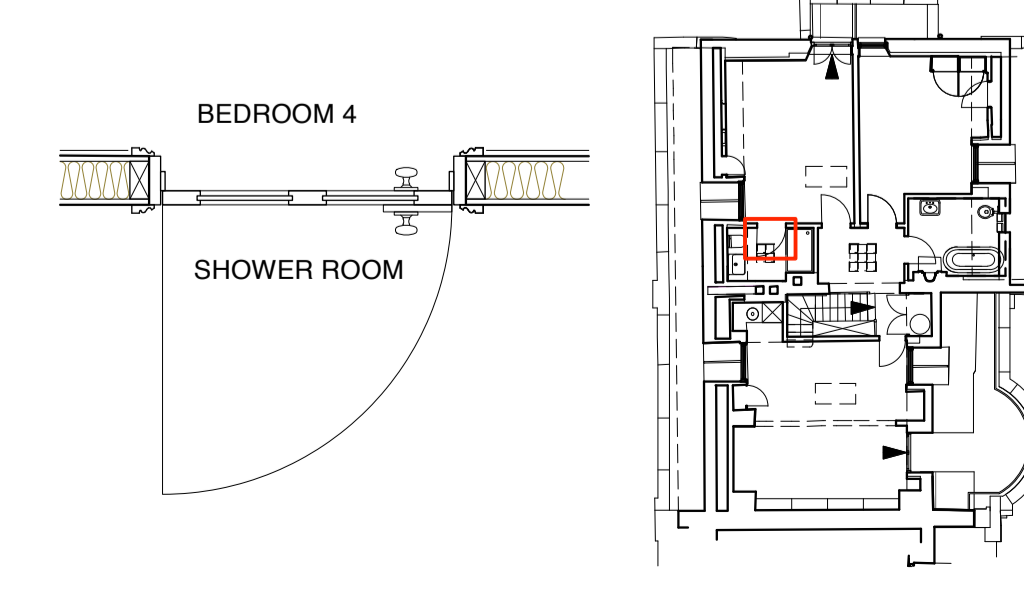
LANDING

OFFICE/
BEDROOM 6

D312
SHOWER ROOM
RE-USE EXISTING UNBEADED 4-PANELLED DOOR LEAF D308
IN NEW OPENING
NEW LININGS AND STOPS
NEW IRONMONGERY
PAINT FINISH



SHOWER ROOM



BEDROOM 4

SHOWER ROOM

Lisa Shell architects
15801 Highgate Road, N6 6JU
02087 600000
www.lisashellarchitects.co.uk

7 THE GROVE, HIGHGATE, LONDON N6 6JU

NEW & ALTERED INTERNAL FIRST & THIRD FLOOR DOORS
GR07 / CO-P / 221

1:20/5 @ A1; 1:10/2.5 @ DE
DO NOT SCALE FROM THIS DRAWING
PREFER ALL DISCREPANCIES TO ARCHITECT

REVISIONS/ISSUE

01/09/2023
ISSUE TO PLANNING
FOR DOC3: DETAIL