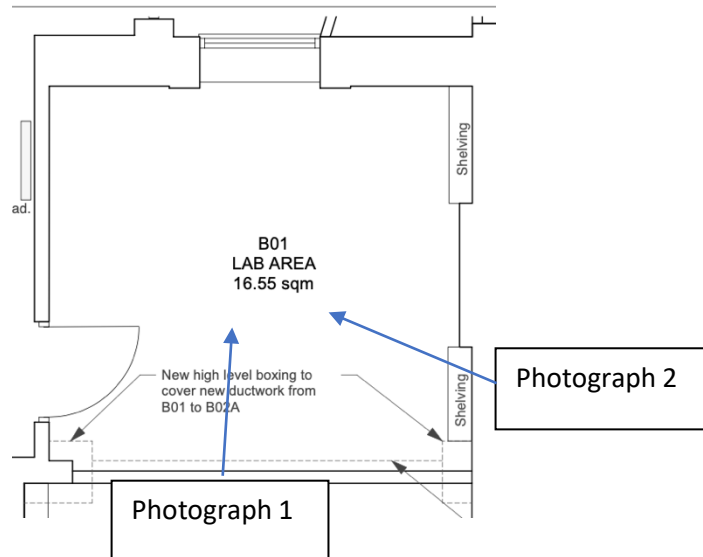


## 49 GORDON SQUARE - SCHEDULE OF PHOTOGRAPHS

### B01 Basement Laboratory



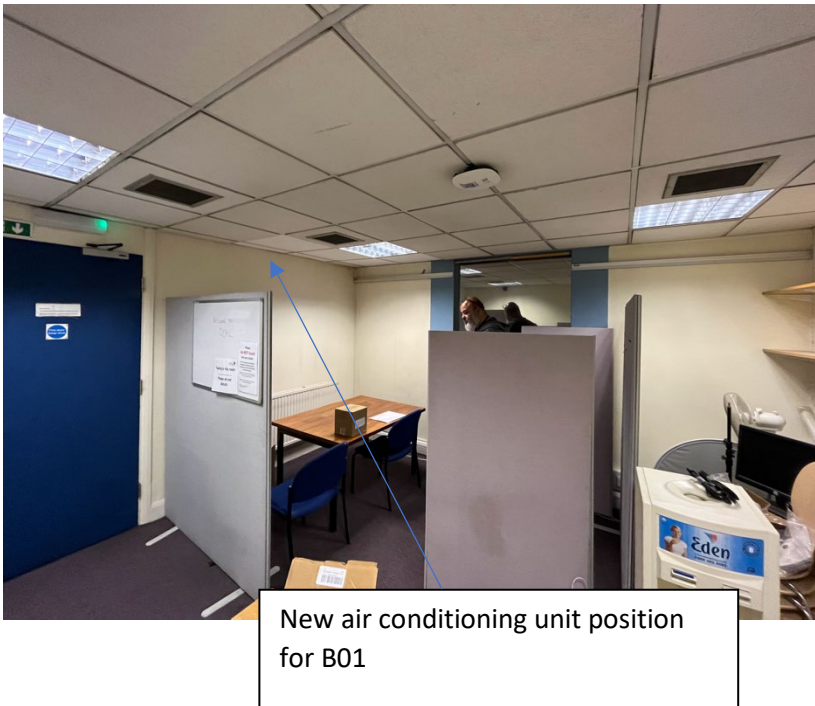
### Photograph 1



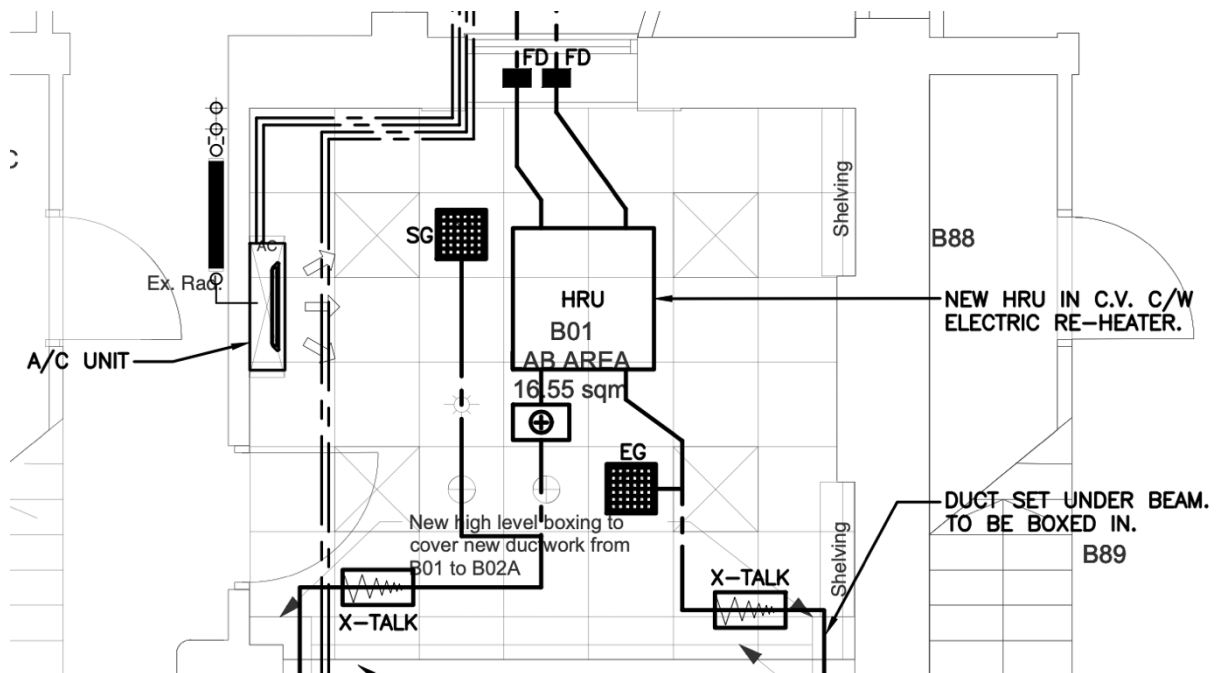
### Scope of works overview:

- New carpet flooring
- Redecorations
- New suspended ceiling and lighting
- Air conditioning

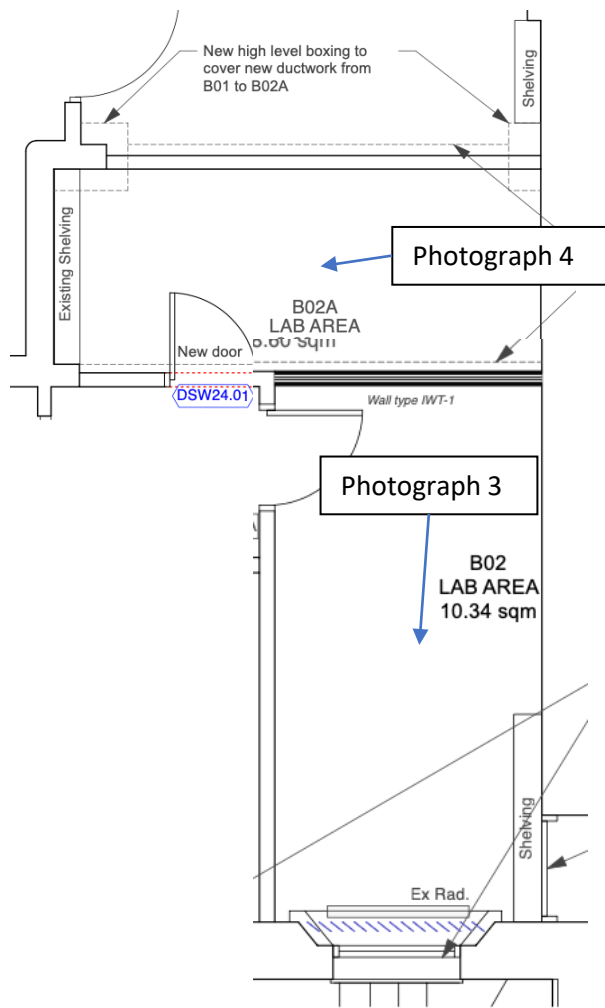
Photograph 2



Extract of Drawing 220593-8611 C2 indicating A/C unit position



## B02/B02A Basement Lab to be divided into 2 No rooms



### Scope of works overview:

- New carpet flooring
- Redecorations
- New lighting
- Air conditioning
- New door
- New partition to split B02 creating additional room B02A

Photograph 3



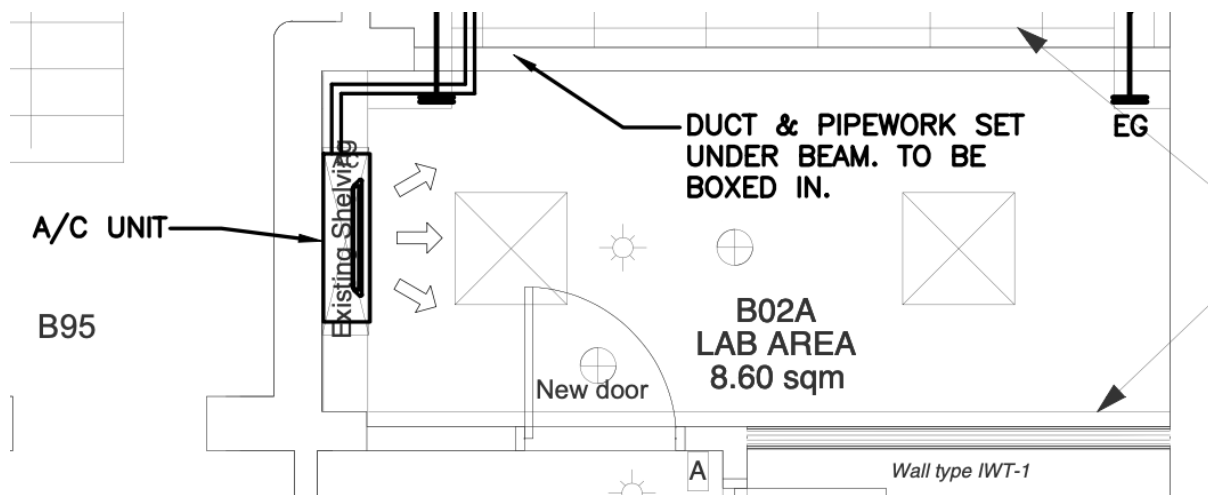
Photograph 4



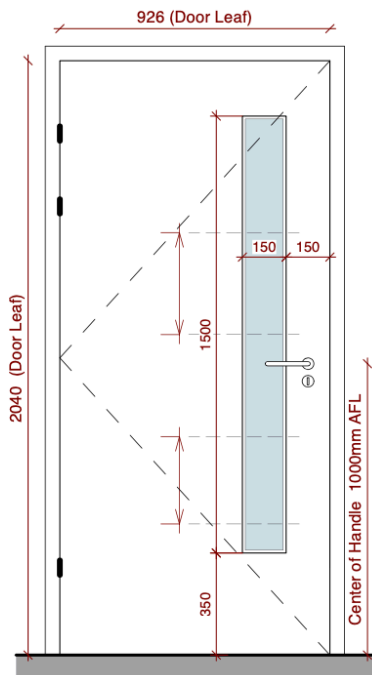
Location for new door to B02A

New air conditioning unit position for B02A

Extract of Drawing 220593-8611 C2 indicating A/C unit, new door position and new partition wall location

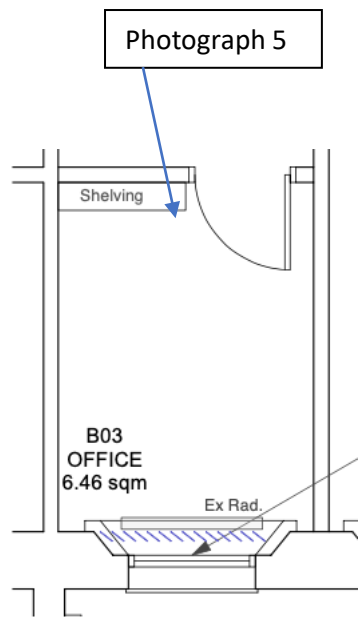


Extract of Drawing 220593(SW24)5200 C1 indicating new door to B02A



**DOOR ELEVATION A**  
(DSW24.01)

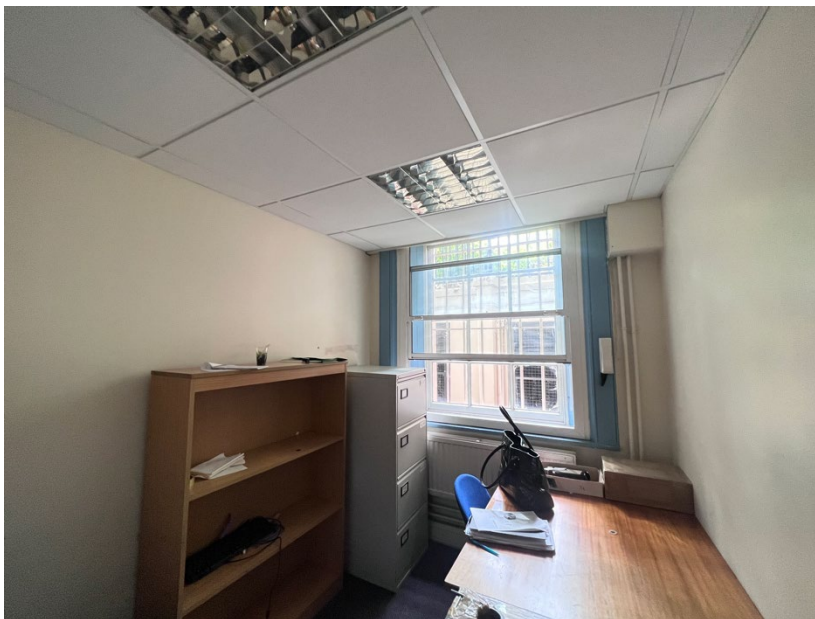
### B03 Basement Office conversion to laboratory



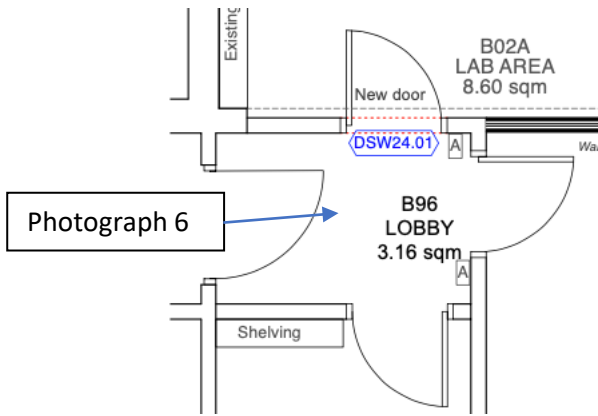
#### Scope of works overview:

- New carpet flooring
- Redecorations
- New lighting
- Sash window overhaul

Photograph 5



### B96 Lobby to B02, B02A and B03



Photograph 6

#### Scope of works overview:

- New carpet flooring
- Redecorations
- New lighting
- New door opening to B02A

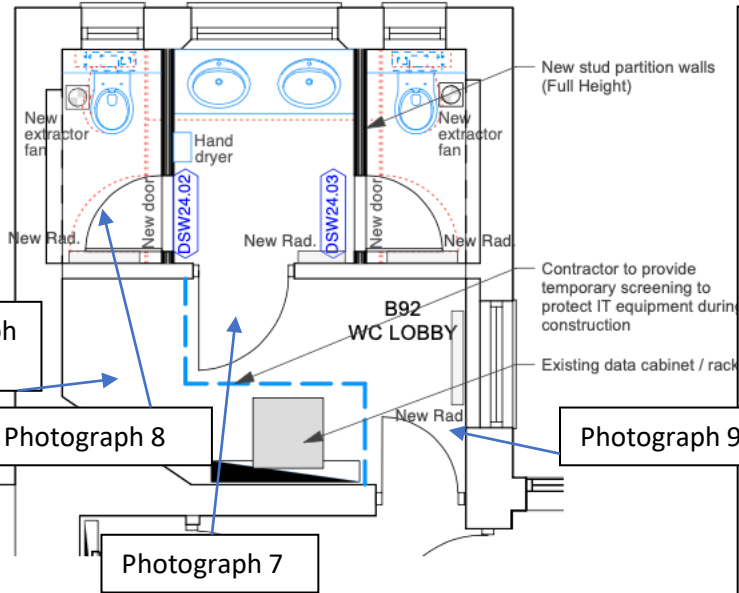
Photograph 6



New door opening to B02A

## B92 WC Lobby and B91 WCs

U



### Scope of works overview:

- New vinyl flooring
- Redecorations and plaster repairs
- New lighting
- New cubicle partitions
- Window pane replacements
- New sanitaryware, mirror, dryers, hooks

PROPOSED FLOOR PLAN - ROOM B91

### Photograph 7





Photograph 8



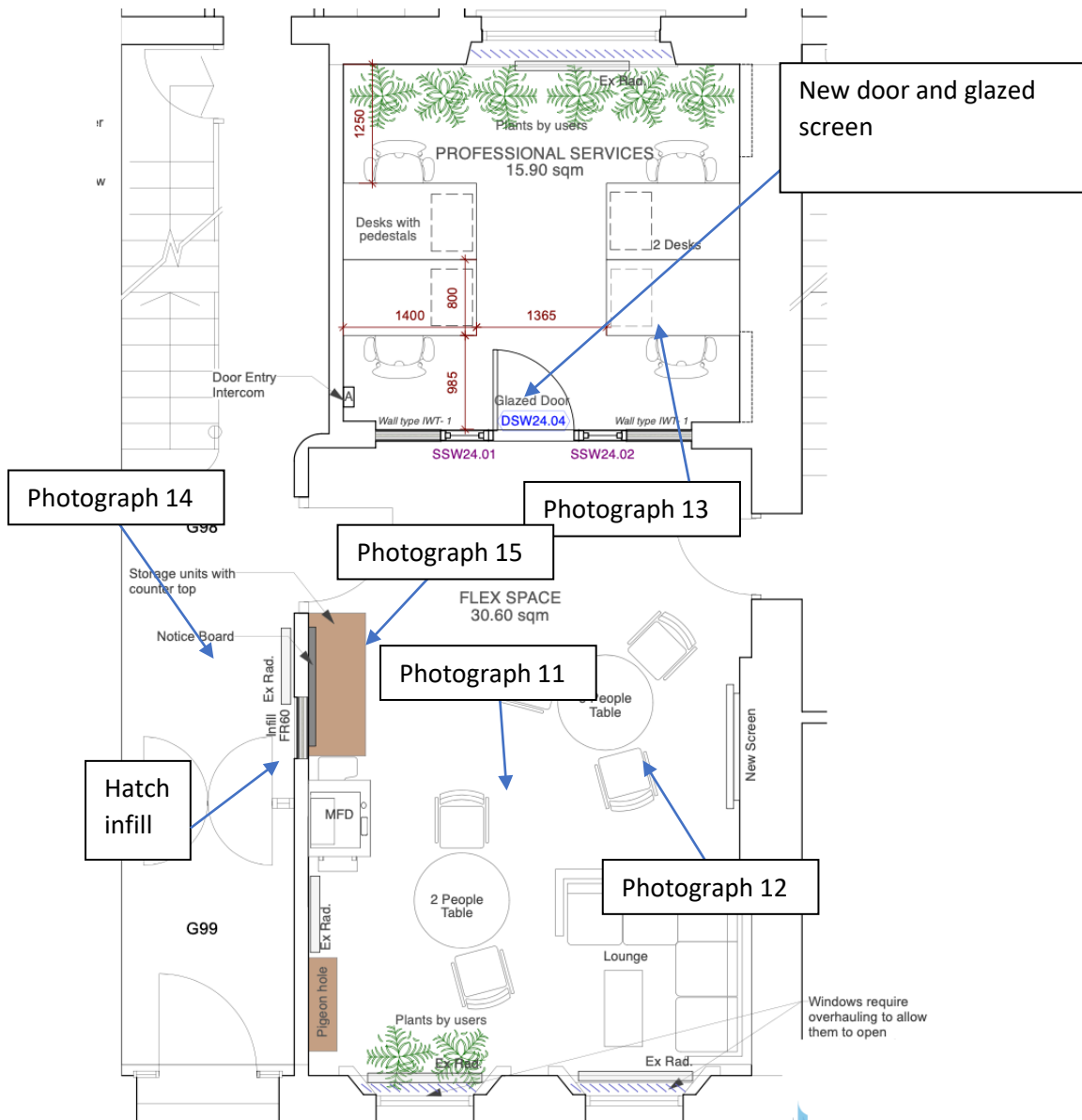
Photograph 9



Photograph 10



## G01 Reception



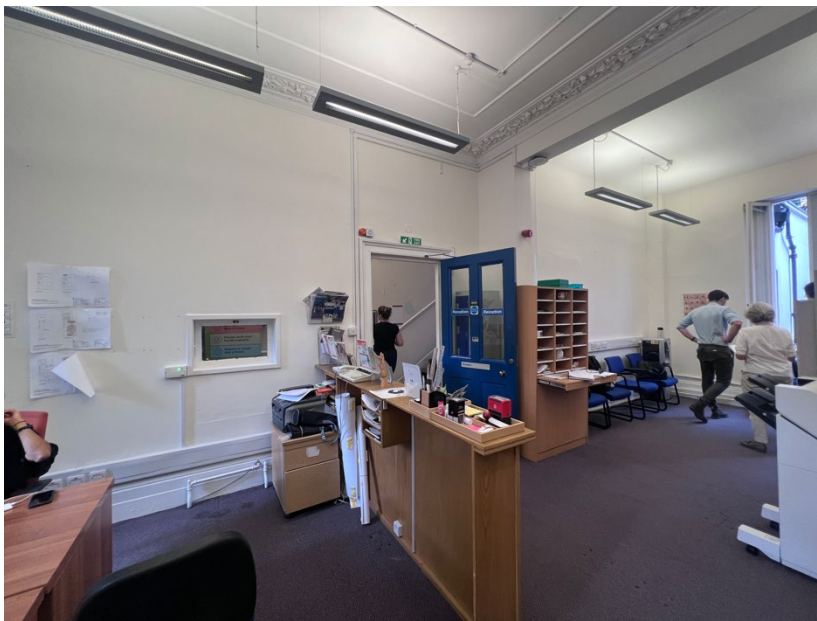
### Scope of works overview:

- New carpet flooring
- Redecorations
- New lighting
- New screen partition, glazed screen and FD30S door
- Infill hatch
- Entrance door access control / intercom
- Sash window overhaul
- Secondary glazing

Photograph 11



Photograph 12



Photograph 13



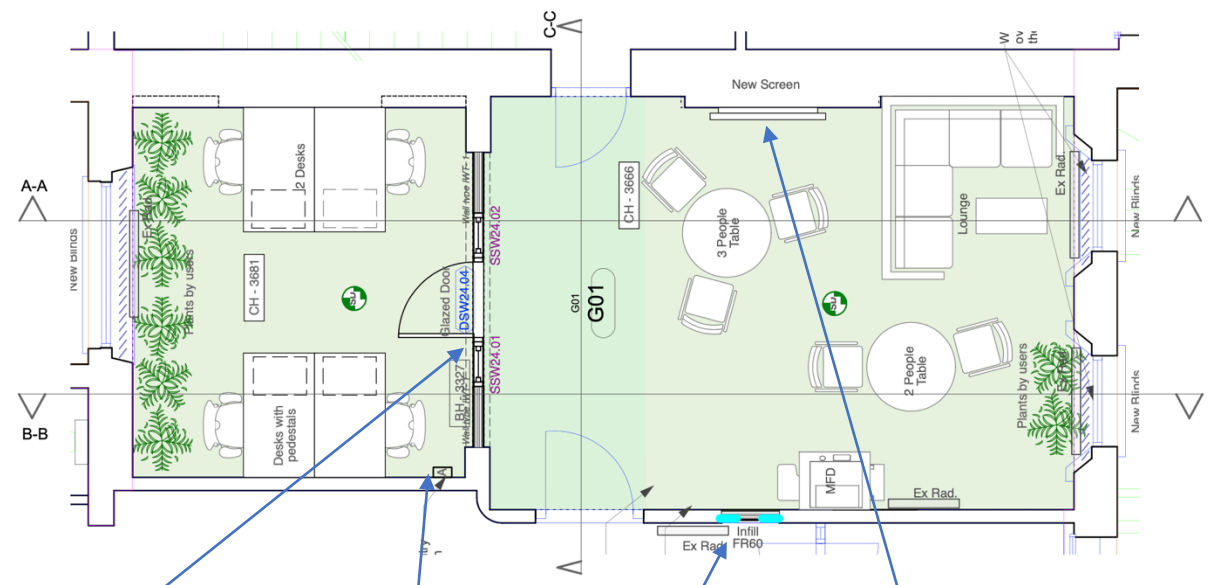
Photograph 14



Photograph 15



Extract of Drawing 220593-2604 P1 showing overall proposed room layout



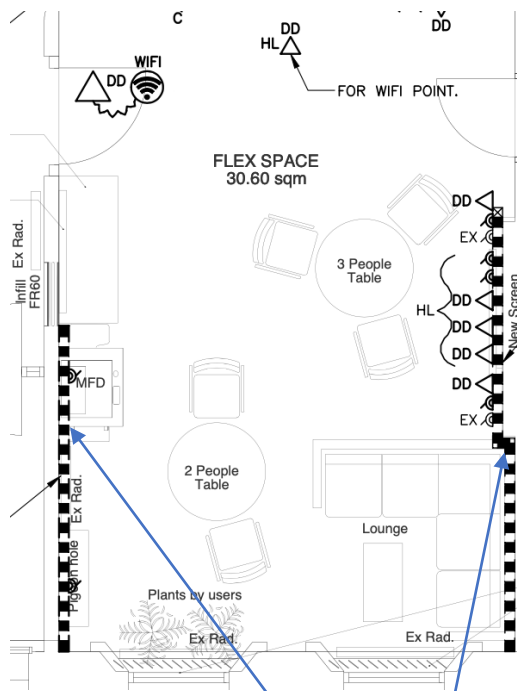
New door and glazed screen

Door entry/intercom

Hatch infill

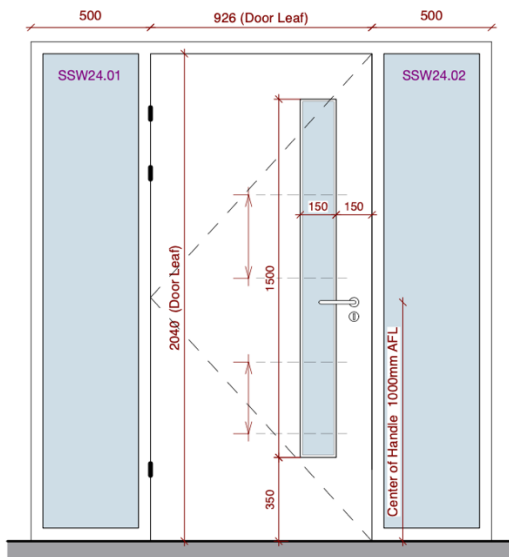
New AV Screen

Extract of Drawing 220593-8671 C2 indicating new trunking to G01 flexible space



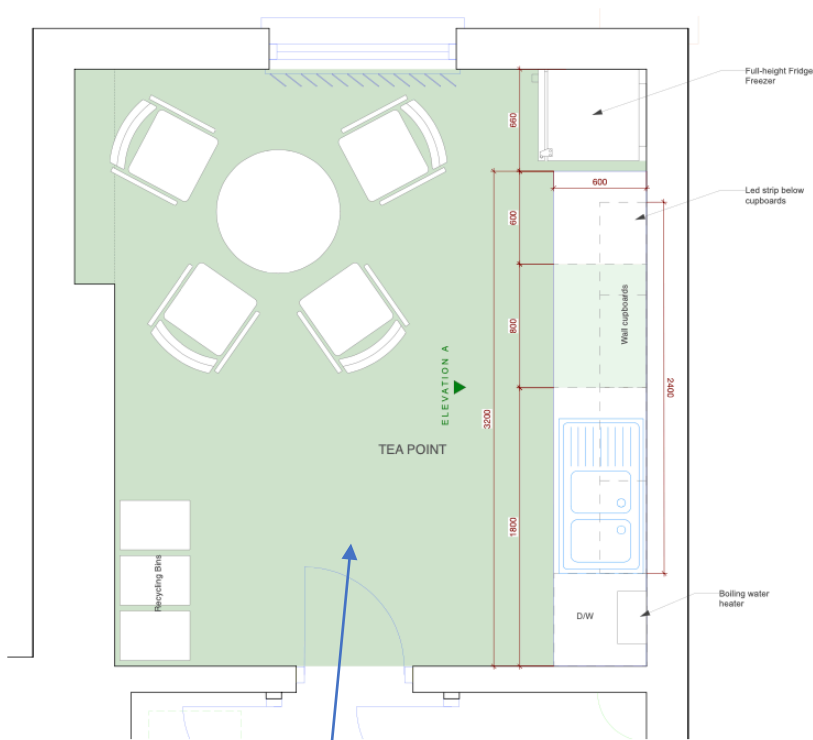
New skirting trunking and socket outlet positions

Extract of Drawing 220593(SW24)5200 C1 indicating new door and glazed screens for Professional Services area within room G01 (Reception)



DOOR ELEVATION C  
(DSW24.04)

## G02 Ground Floor Tea Point



Photograph 16

### Scope of works overview:

- New PVC tiled flooring
- Redecorations
- New lighting
- New kitchenette and extract vent

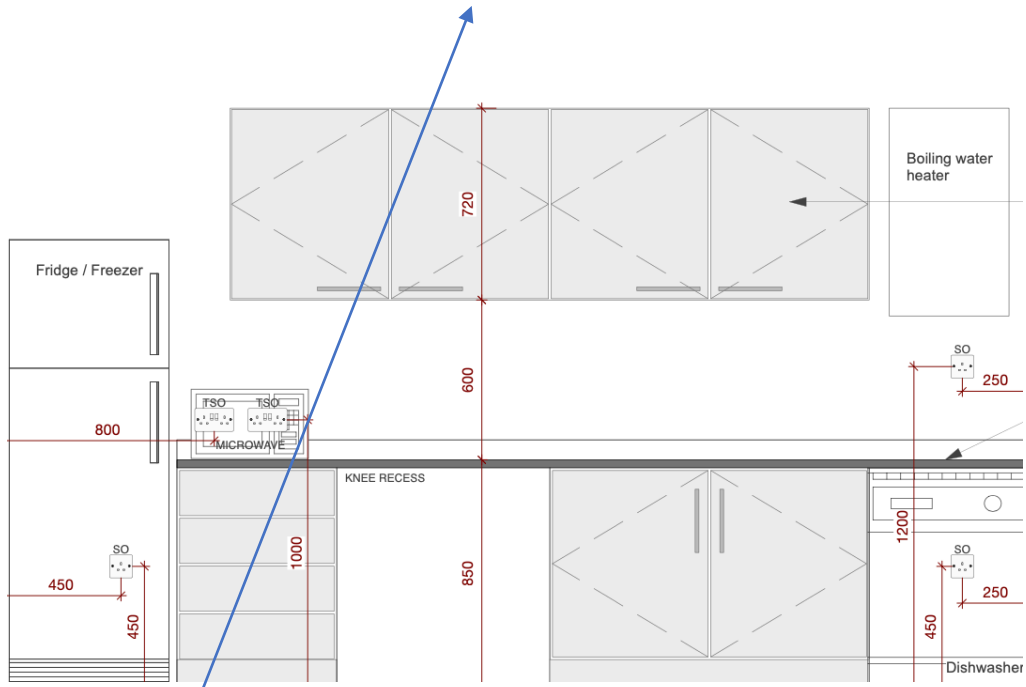
### Photograph 16





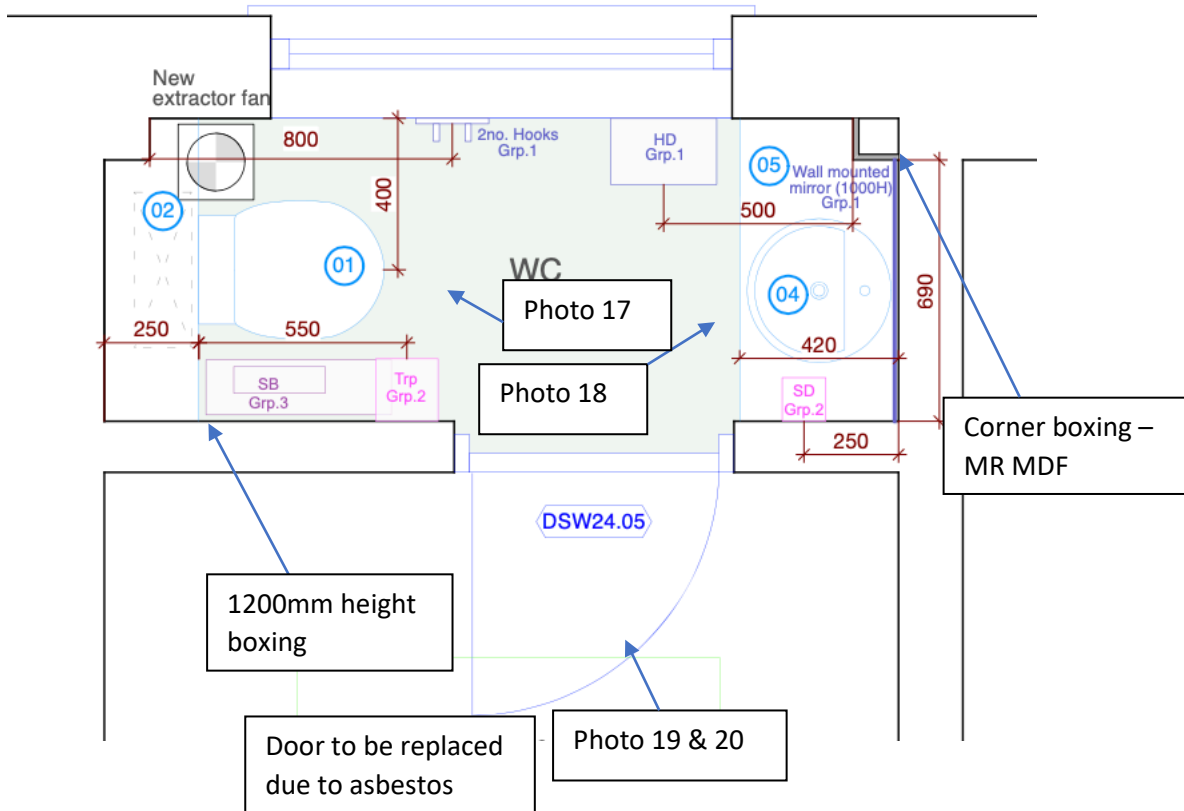
# Extract of Drawing 220593(SW24)2601 C1 elevation of kitchentte to room G02 (Tea Point)

Refer to drawing 220593(SW24)-2501 for ceiling type.



New extract fan position for G02

### 399 WC



#### Scope of works overview:

- New door
- New vinyl flooring
- New services boxing
- Redecorations
- New lighting
- New sanitaryware, mirror, dryer, hooks

Photograph 17



Photograph 18



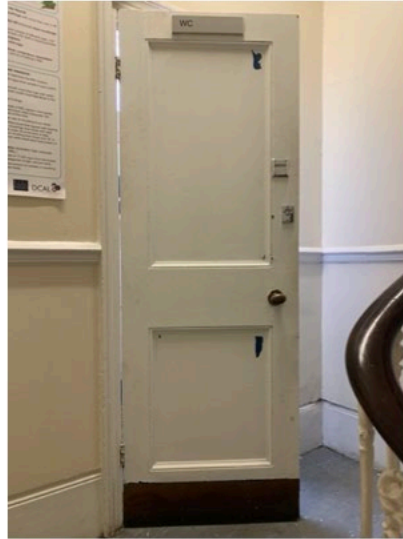
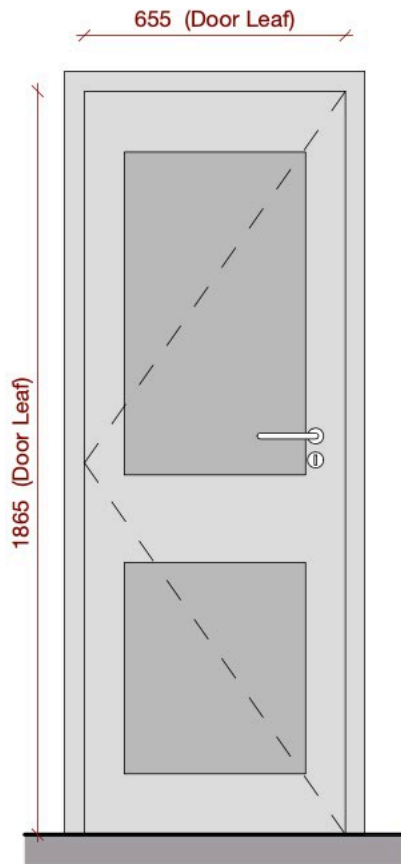
Photograph 19



Photograph 20



Extract of Drawing 220593(SW24)5200 C1 indicating new door to room 399 (WC)



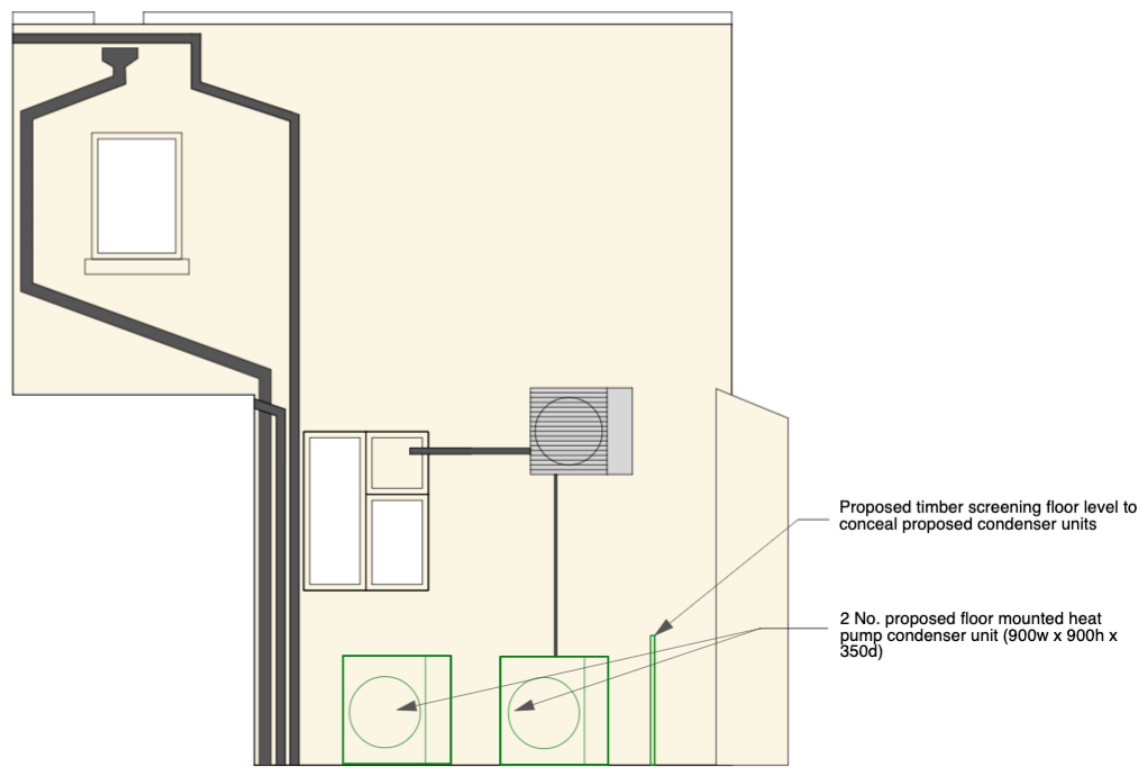
**DOOR ELEVATION D**  
(DSW24.05)

Extract of Drawing 220593(SW24)1105 P1 indicating new ventilation grilles to serve B91 WCs. Also note position of proposed screen serving new condenser units.



Proposed rear elevation section

Extract of Drawing 220593(SW24)1106 P1 indicating new condenser units and timber screening



Photograph 21



New timber screen position

New condenser unit positions

Photograph 22



New condenser unit positions