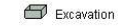


Job No.	Sheet No.	Rev.
20 Crediton Hill		
Drg. Ref.		
Made by Pile Wall - Proppec03-May-2023	Date	Checked Date

Propped Contiguous Pile Wall - Northern Boundary

RAW RESULTS

Legend



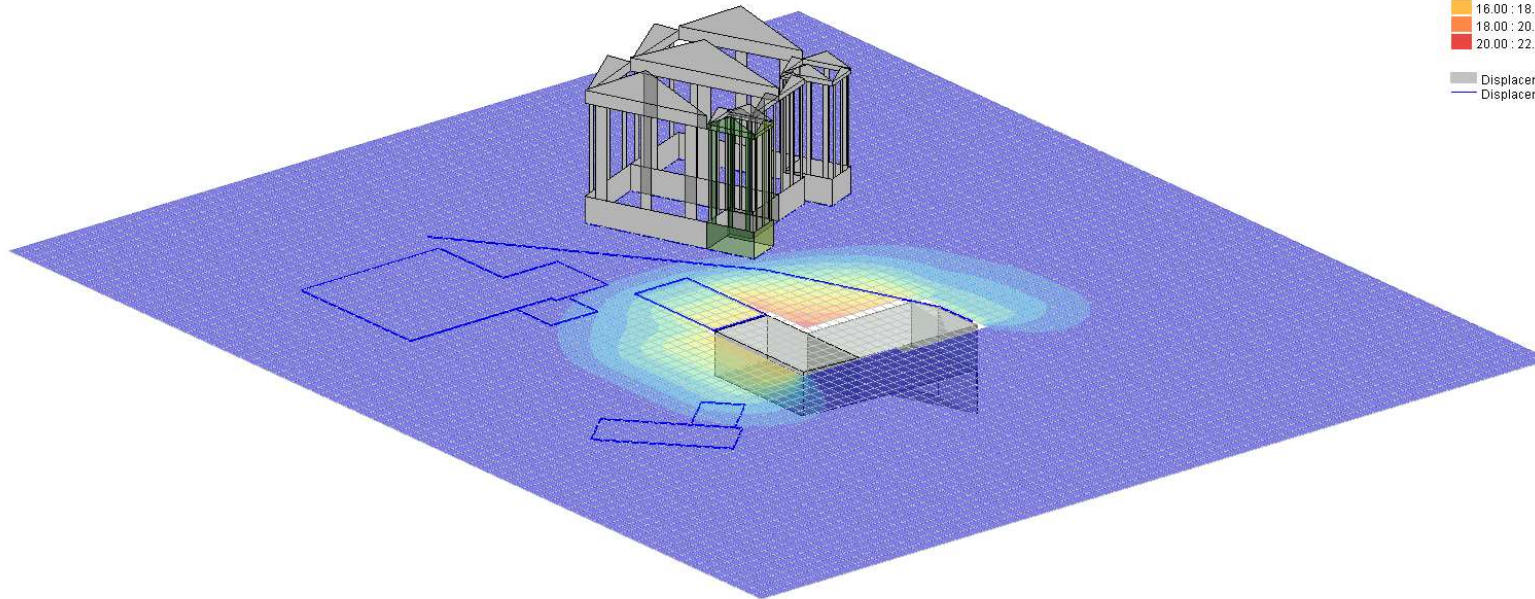
Building Results

- < Sensitivity
- Cat. 0 (Negligible)
- Cat. 1 (Very Slight)
- Cat. 2 (Slight)
- Cat. 3 (Moderate)
- Cat. 4 (Severe)

Displacement - Horizontal

- 0 : 2.000 mm
- 2.000 : 4.000 mm
- 4.000 : 6.000 mm
- 6.000 : 8.000 mm
- 8.000 : 10.000 mm
- 10.000 : 12.000 mm
- 12.000 : 14.000 mm
- 14.000 : 16.000 mm
- 16.000 : 18.000 mm
- 18.000 : 20.000 mm
- 20.000 : 22.000 mm

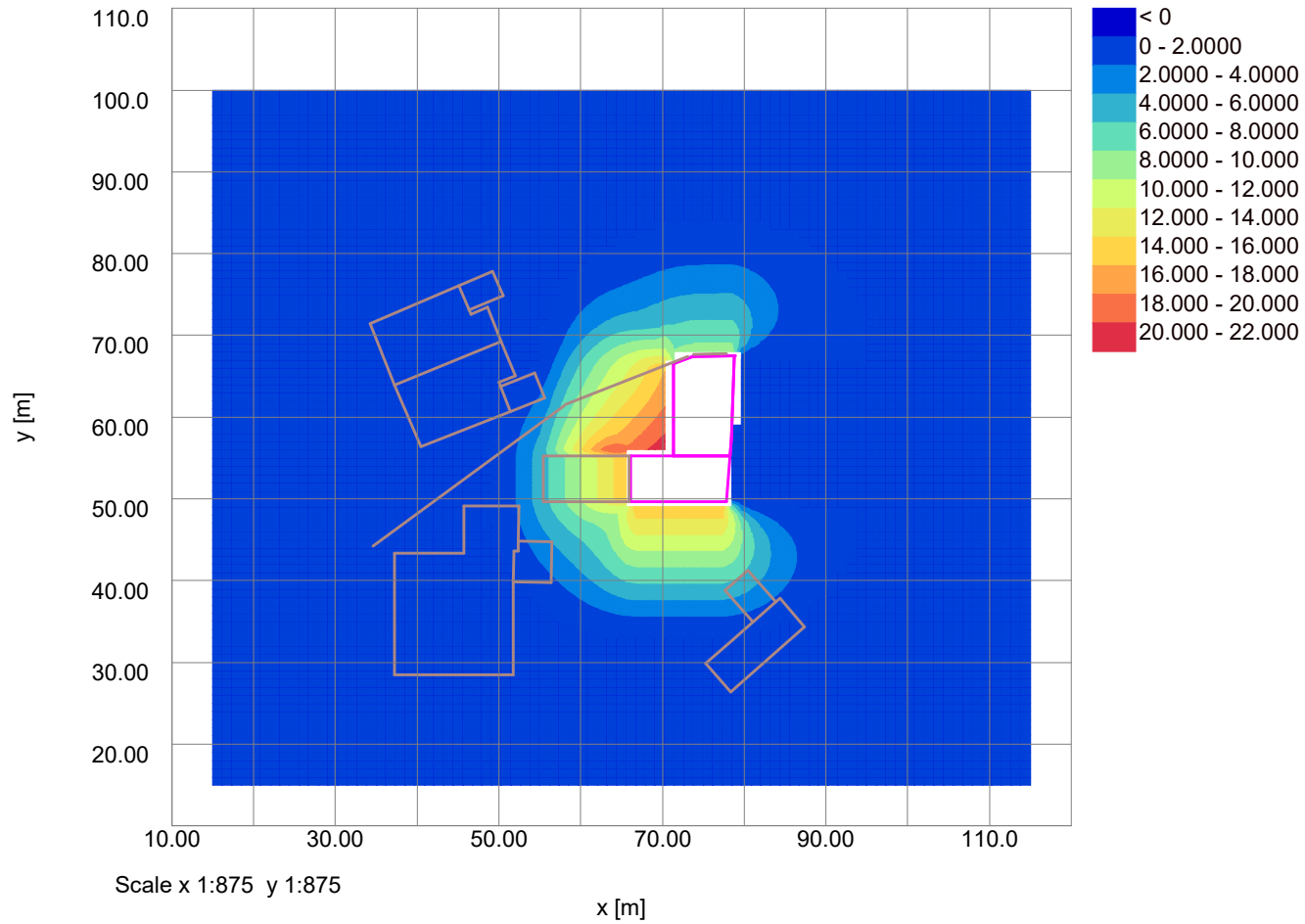
- Displacement Grids
- Displacement Lines



Job No.	Sheet No.	Rev.
20 Crediton Hill		
Drg. Ref.		
Made by Pile Wall - Proppec03-May-2023	Date	Checked Date

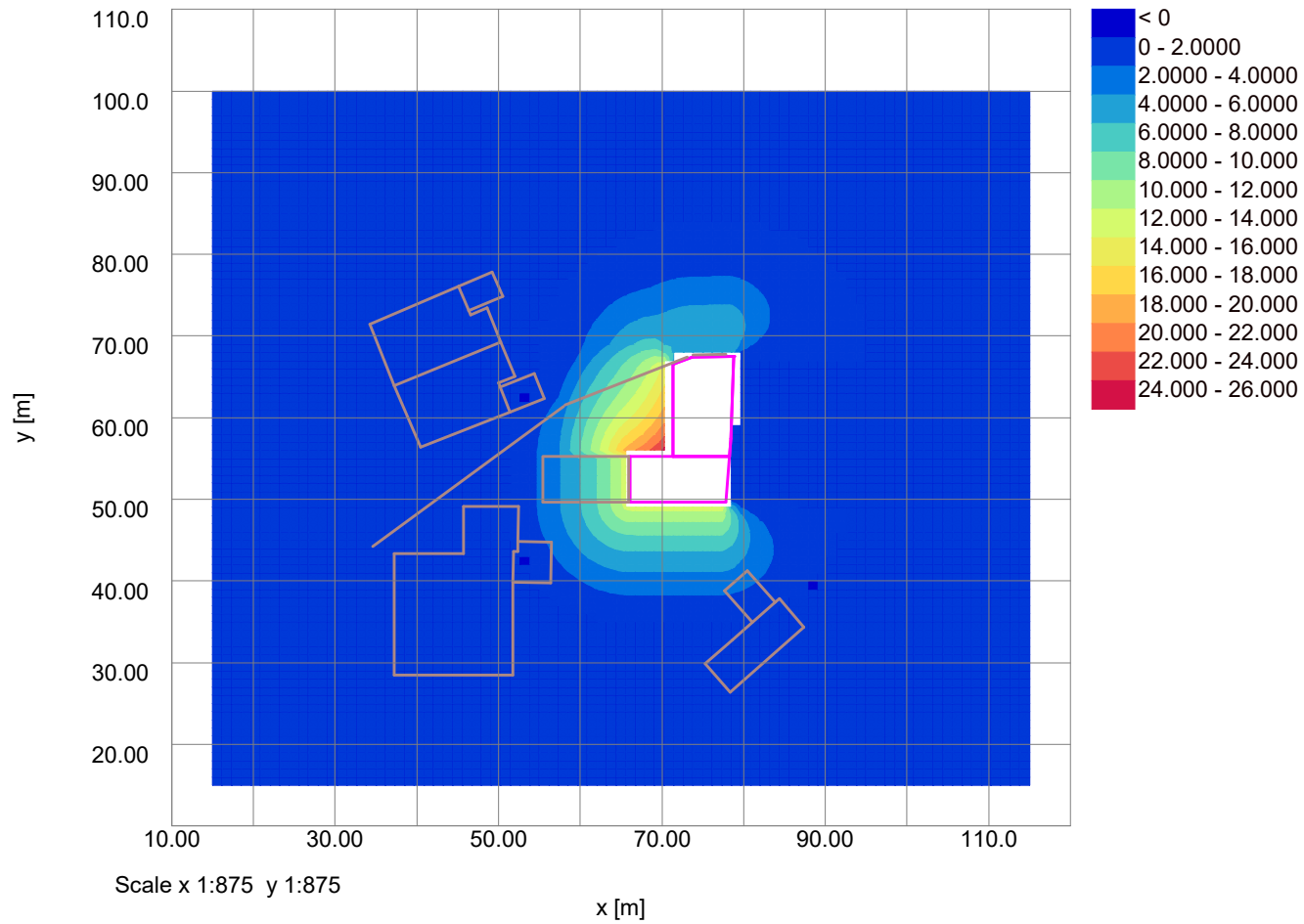
Propped Contiguous Pile Wall - Northern Boundary

Horizontal Displacement Contours: Grid 1 (level 100.000m) Interval 2mm



Job No.	Sheet No.	Rev.
20 Crediton Hill		
Drg. Ref.		
Made by Pile Wall - Proppec03-May-2023	Date	Checked Date

Vertical Settlement Contours: Grid 1 (level 100.000m) (Interval 2mm)



Job No.	Sheet No.	Rev.
20 Crediton Hill		
Drg. Ref.		
Made by	Date 03-May-2023	Checked Date

RAW RESULTS

Legend



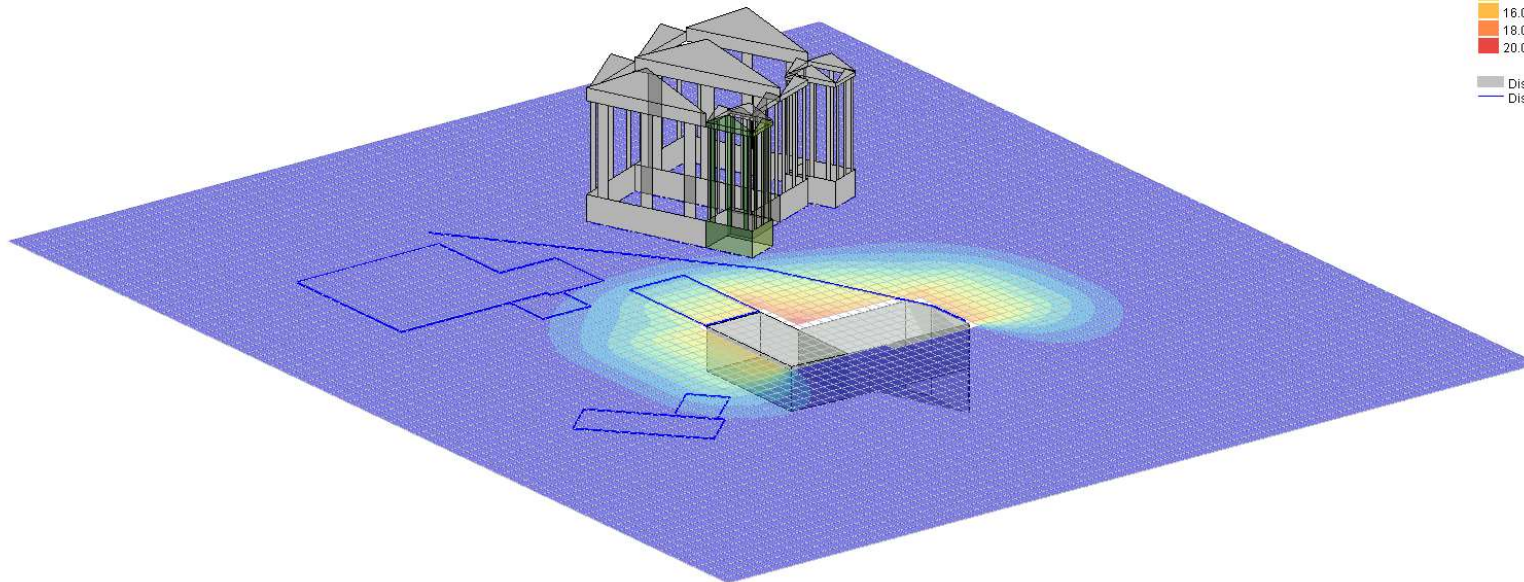
Building Results

- < Sensitivity
- Cat. 0 (Negligible)
- Cat. 1 (Very Slight)
- Cat. 2 (Slight)
- Cat. 3 (Moderate)
- Cat. 4 (Severe)

Displacement - Horizontal

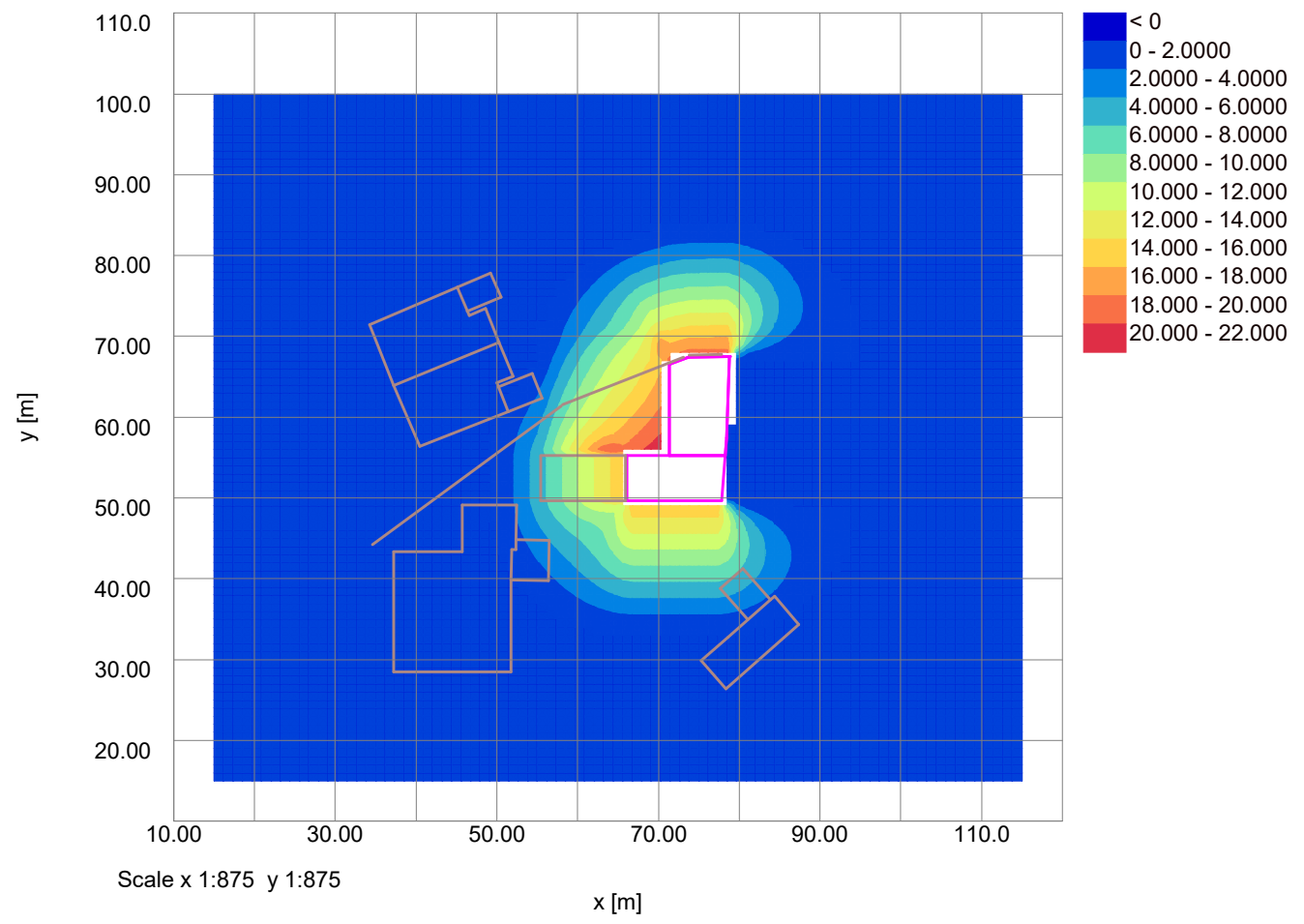
- 0 : 2.000 mm
- 2.000 : 4.000 mm
- 4.000 : 6.000 mm
- 6.000 : 8.000 mm
- 8.000 : 10.000 mm
- 10.000 : 12.000 mm
- 12.000 : 14.000 mm
- 14.000 : 16.000 mm
- 16.000 : 18.000 mm
- 18.000 : 20.000 mm
- 20.000 : 22.000 mm

- Displacement Grids
- Displacement Lines



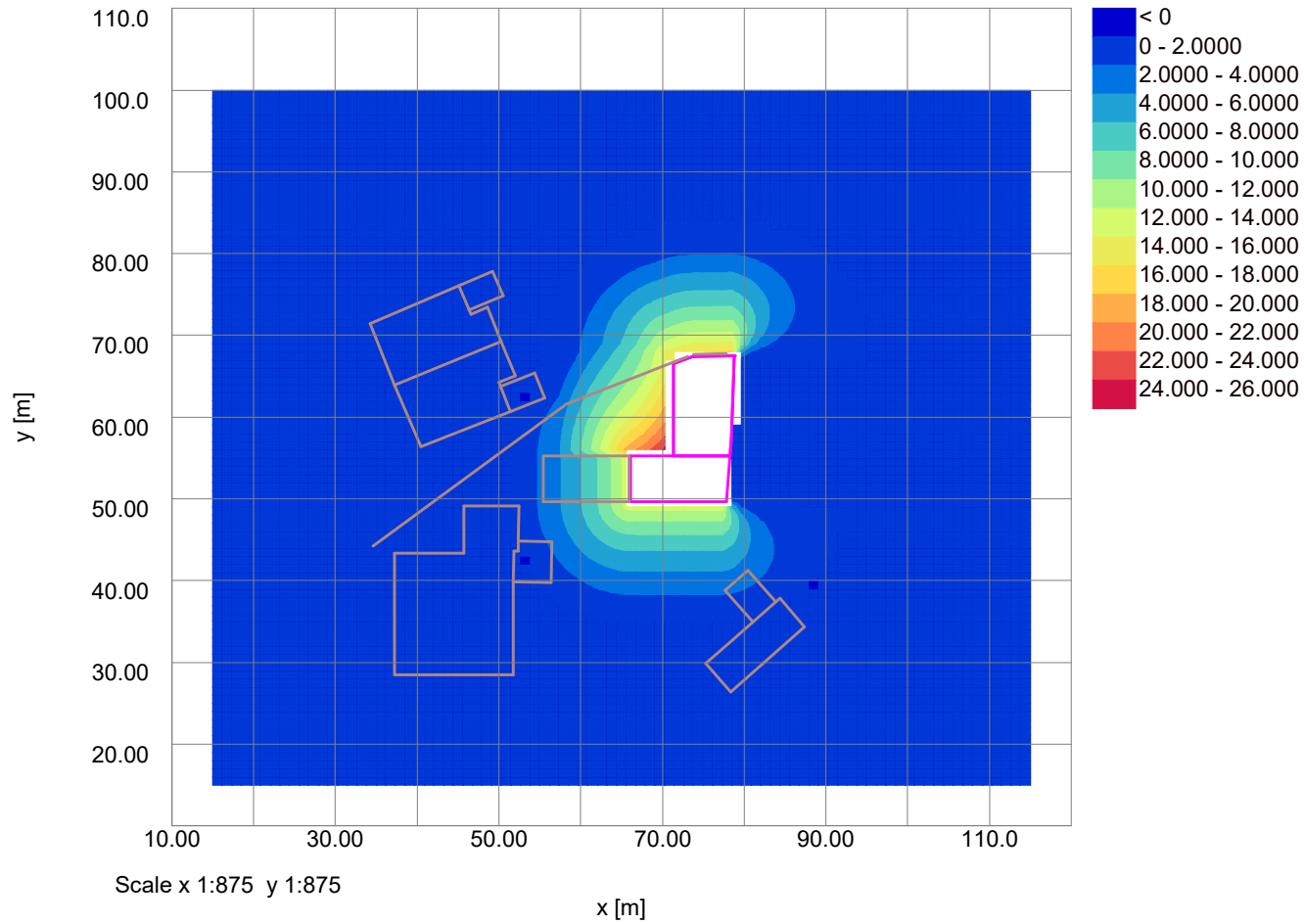
Job No.	Sheet No.	Rev.
20 Crediton Hill		
Drg. Ref.		
Made by	Date	Checked
	03-May-2023	
		Date

Horizontal Displacement Contours: Grid 1 (level 100.000m) Interval 2mm



Job No.	Sheet No.	Rev.
20 Crediton Hill		
Drg. Ref.		
Made by	Date	Checked
	03-May-2023	
		Date

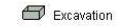
Vertical Settlement Contours: Grid 1 (level 100.000m) (Interval 2mm)



Job No.	Sheet No.	Rev.
20 Crediton Hill		
Drg. Ref.		
Made by	Date 04-May-2023	Checked Date

RAW RESULTS

Legend



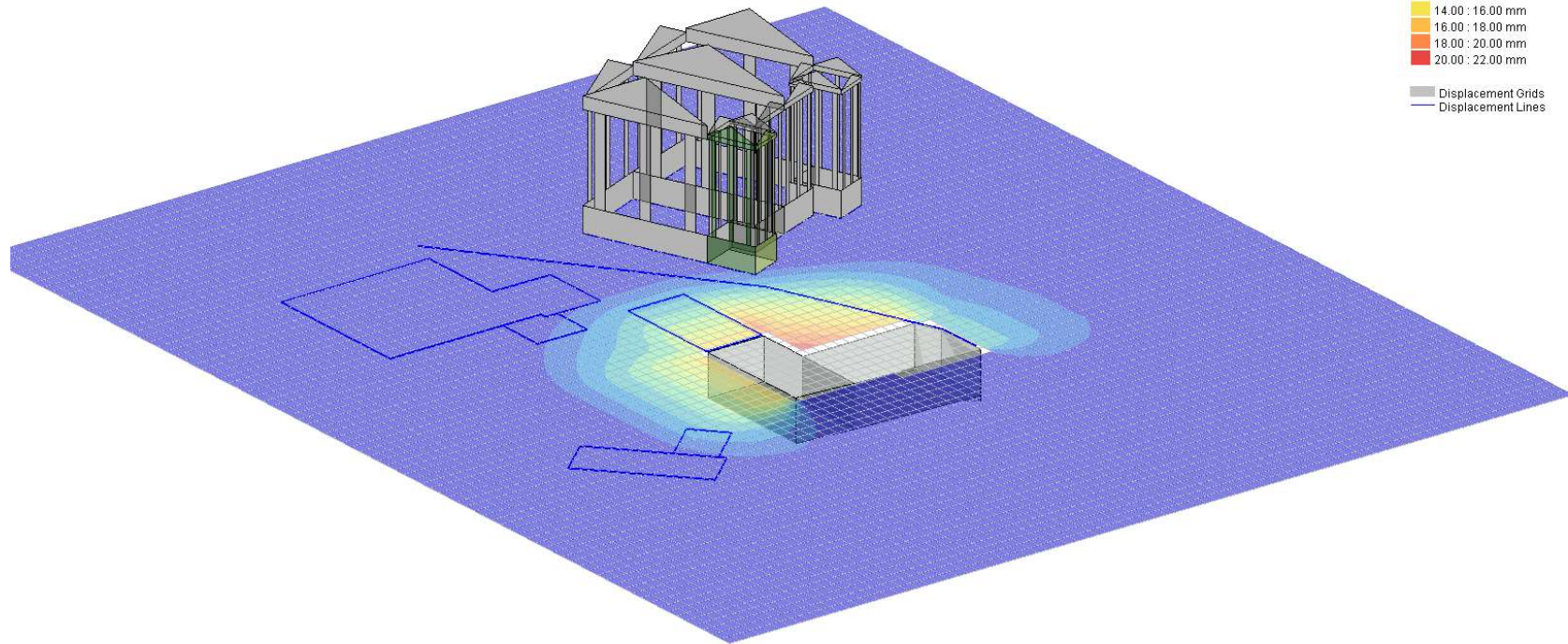
Building Results

- < Sensitivity
- Cat. 0 (Negligible)
- Cat. 1 (Very Slight)
- Cat. 2 (Slight)
- Cat. 3 (Moderate)
- Cat. 4 (Severe)

Displacement - Horizontal

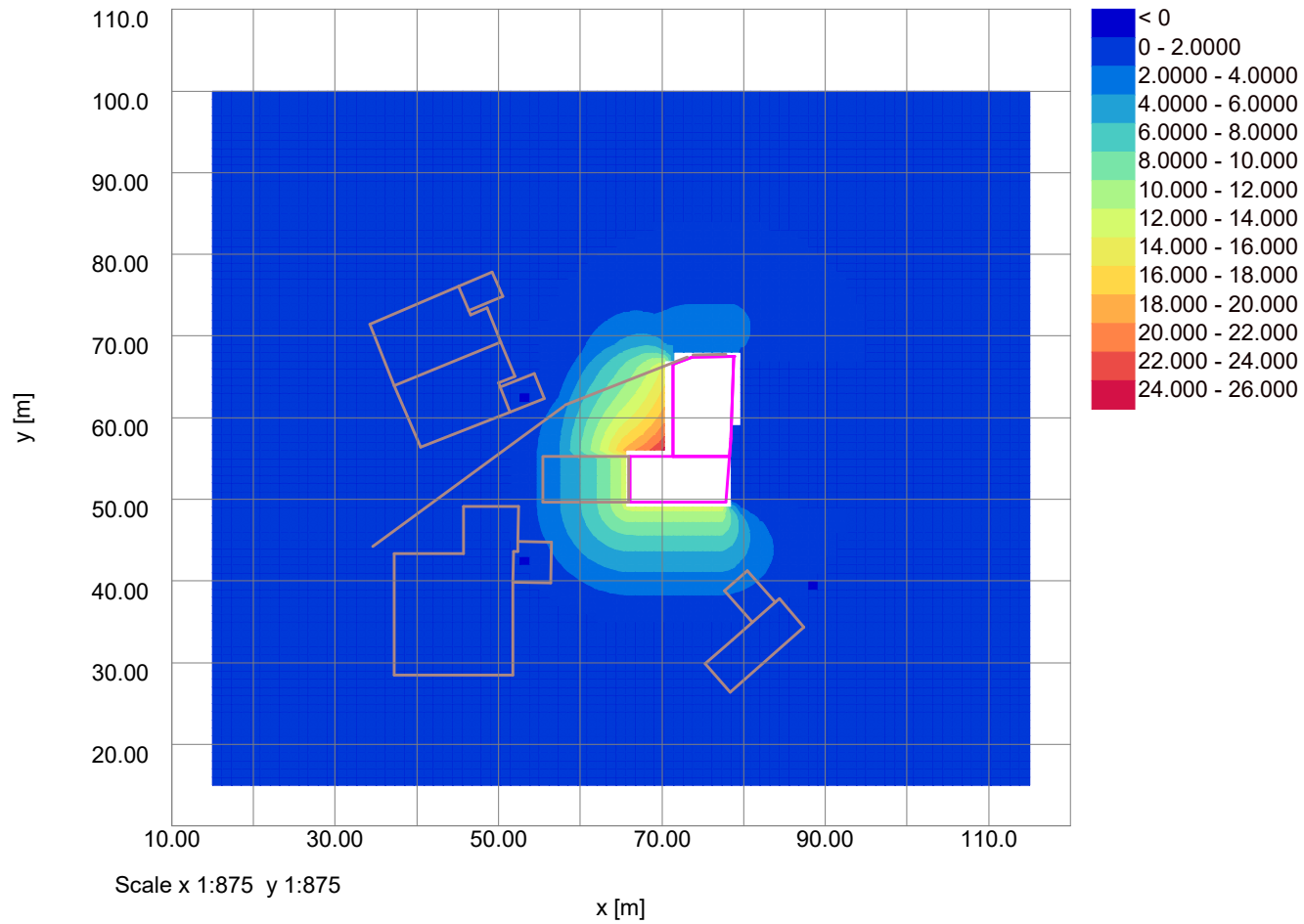
- 0 : 2.000 mm
- 2.000 : 4.000 mm
- 4.000 : 6.000 mm
- 6.000 : 8.000 mm
- 8.000 : 10.000 mm
- 10.000 : 12.000 mm
- 12.000 : 14.000 mm
- 14.000 : 16.000 mm
- 16.000 : 18.000 mm
- 18.000 : 20.000 mm
- 20.000 : 22.000 mm

- Displacement Grids
- Displacement Lines



Job No.	Sheet No.	Rev.
20 Crediton Hill		
Drg. Ref.		
Made by	Date	Checked
	04-May-2023	
		Date

Vertical Settlement Contours: Grid 1 (level 100.000m) (Interval 2mm)



Job No.	Sheet No.	Rev.
20 Crediton Hill		
Drg. Ref.		
Made by	Date	Checked
	04-May-2023	

Horizontal Displacement Contours: Grid 1 (level 100.000m) Interval 2mm

