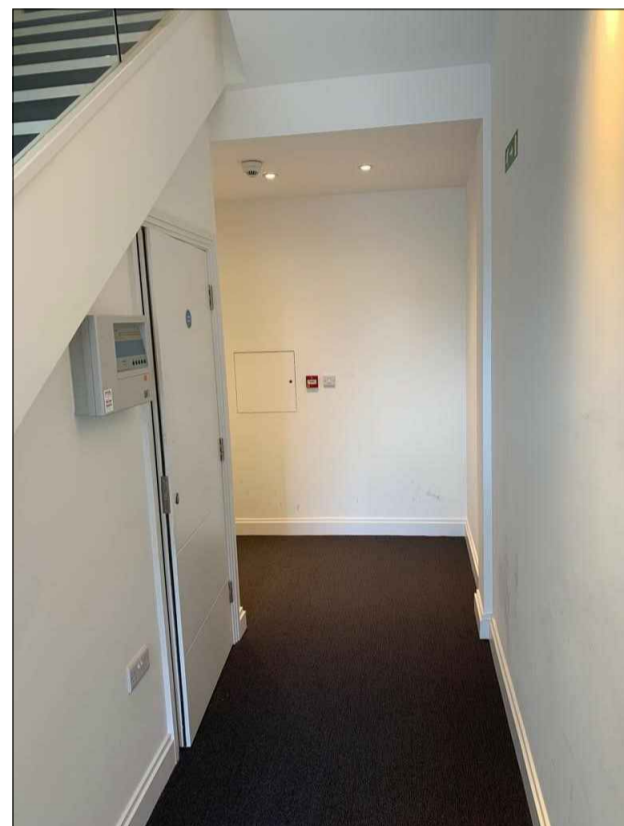
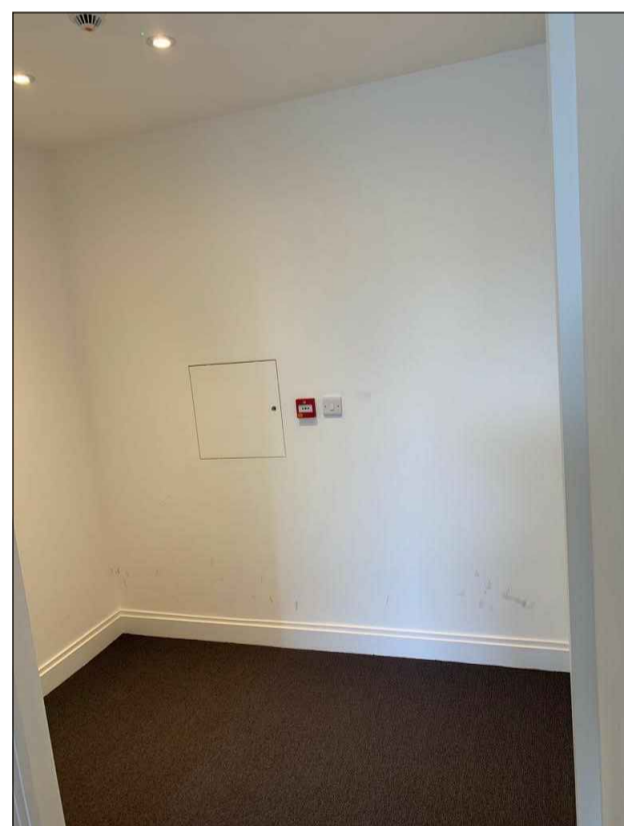


notes:
 Do not scale from this drawing
 All dimensions to be checked on site and any discrepancies reported to the Architect/Contract Administrator before proceeding with the works on site, or off-site fabrication

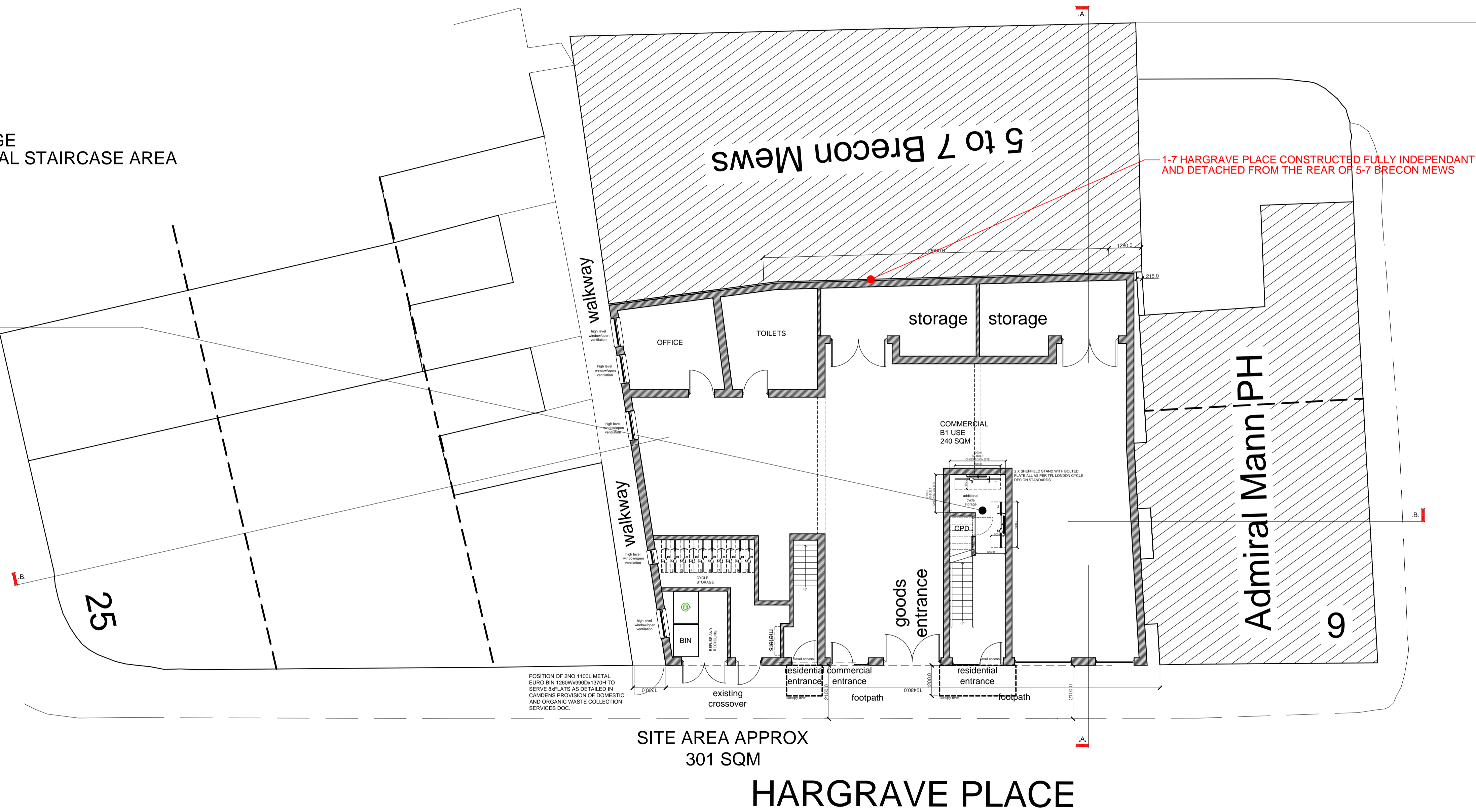
PROPOSED CYCLE STORAGE WITHIN EXISTING COMMUNAL STAIRCASE AREA



VIEW TOWARDS NEW CYCLE STORE AREA



VIEW TOWARDS NEW CYCLE STORE AREA ADDITIONAL 2 CYCLE STORAGE SPACES



SITE AREA APPROX
301 SQM

HARGRAVE PLACE

SITE/GROUND FLOOR PLAN 1:100



SCALE 1:100@A1

For Approval		
B	LAYOUT UPDATED, ADDITIONAL INFO ADDED FOLLOWING COMMENTS FROM PLANNING DEPARTMENT	18.05.22
A	LAYOUT UPDATED, ADDITIONAL INFO ADDED FOLLOWING COMMENTS FROM PLANNING DEPARTMENT	12.05.22
revision	description	date
GENESIS ARCHITECTS LTD 7-26 Margate Road, Stamford Abbots Ware Hertfordshire SG12 8EP T: 01920 877998 F: 01920 877998 E: genesis@gaarchitects.co.uk W: www.genesisarchitects.ltd.uk		
client Hargrave Developments Ltd		
project RESIDENTIAL DEVELOPMENT AT 1-7 HARGRAVE PLACE LONDON N7 0BP		
title PROPOSED SITE/GROUND FLOOR PLAN		
date	scale	drawn
DEC 21	AS SHOWN	IRMB
drawing no	revision	
GAL 358 (PC) 002	B	