

**FIRST FLOOR PLAN -
AEROLITE NATURAL STONE - CLADDING PANEL LAYOUT**
SCALE 1:25

NOTES:
ALL DIMENSIONS IN M.M. UNLESS NOTED

LEGEND

AER-05c1 INDICATES - 27mm THICK AEROLITE MONOLITH CLADDING PANELS (7mm STONE SUPPORTED BY A 20mm THICK ALUMINIUM HONEYCOMBE BACKING) WITH CONCEALED SUPPORT FIXING

| REV | DATE | DESCRIPTION |
|-----|----------|---------------------|
| P1 | 16/01/23 | Issued For Approval |

M & M Contracts Ltd
Venture House
Downshire Way, Bracknell
RG12 1WA

T: +44 (0) 20 3239 0780
E: info@mmcontracts.co.uk
www.mmcontracts.co.uk

Project: 5a Back Lane - Hampstead London
Job Number:
Drawing Title: First Floor Plan
Aerolite Natural Stone - Cladding Panel Layout

Client: Egg Limited

FOR APPROVAL

| | | | |
|-----------------|--------------------------------|------------------|-------|
| Drawn: EM | Date: Jan' 23 | Scale: 1:25 @ A3 | Xref: |
| Reviewed by: DB | Drawing No.: MM-32-CLAD-PL-101 | Rev.: P1 | |

ANG-01
FAB-800

50x30x3mm THICK CONTINUOUS SUPPORT ANGLE FIXED ONTO THE FACE OF THE BOARD EITHER SIDE OF THE CILL PANEL WINDOW JAMBS

GUTTER (DETAILS TBC) TO DIVERT WATER RUN-OFF FROM ROOFLIGHT TO DRAIN INTO PLANTERS. *BY OTHERS*

Ti TRACKING ALUMINIUM MID RAIL

HORIZONTAL FIXING CHANNELS SET INTO ULTRALITE CASSETTE (CONTINUOUS)

FASTFRAME - 140mm LONG BRACKET (FF FIX/BR/140 SINGLE (FLEXIBLE POINT BRACKETS) BRACKET FIXED TO VERTICAL 'T' RAILS, BUT NOT EXCEEDING 600 MAX HORIZONTAL CRS & 600 MAX VERTICAL CRS. (CLASS A1 - FIRE RATED) (NOTE: BRACKET SIZES VARY TO SUIT DIFFERENT CLADDING ZONES)

27mm THICK AEROLITE MONOLITH CLADDING (7mm STONE SUPPORTED BY A 20mm THICK ALUMINIUM HONEYCOMBE BACKING) WITH CONCEALED SUPPORT FIXING

FASTFRAME - 140mm LONG BRACKET (FF FIX/BRD/140) DOUBLE (FIXED POINT) BRACKET FIXED TO VERTICAL 'T' RAILS, BUT NOT EXCEEDING 600 MAX HORIZONTAL CRS & 600 MAX VERTICAL CRS. (CLASS A1 - FIRE RATED) (NOTE: BRACKET SIZES VARY TO SUIT DIFFERENT CLADDING ZONES)

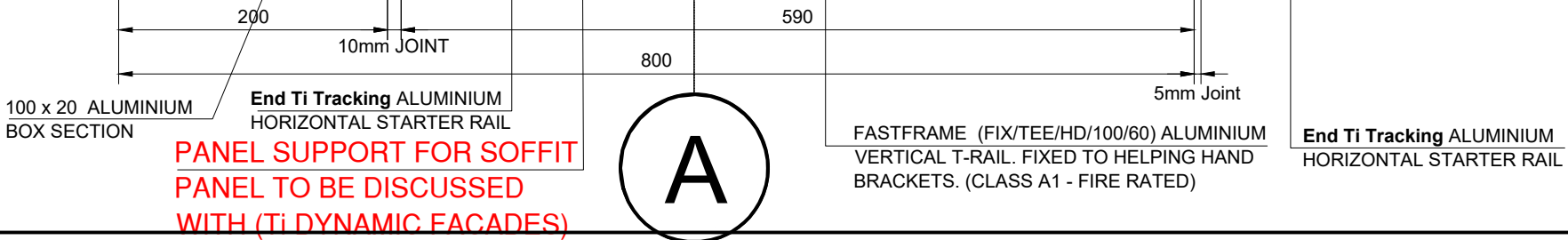
4No Off For Double Brackets) PCF/44/4.8 x 19 FOR FIXING DOUBLE HELPING HAND BRACKETS ON TO THE VERTICAL RAILS. (CLASS A1 - FIRE RATED)

4 x PCF/33/5.5x55 W15 FIXINGS - FIXING (DOUBLE) HELPING HAND BRACKETS TO HORIZONTAL SUPPORT.

HORIZONTAL FIXING CHANNELS SET INTO ULTRALITE CASSETTE (CONTINUOUS)

Ti TRACKING ALUMINIUM MID RAIL

ADDITIONAL CHANNEL SUPPORT REQUIRED TO PROVIDE SUPPORT FOR THE SOFFITS TO BE DISCUSSED



NOTES:
ALL DIMENSIONS IN M.M. UNLESS NOTED

| LEGEND | |
|-----------------|---|
| AER-05c1 | INDICATES - 27mm THICK AEROLITE MONOLITH CLADDING PANELS (7mm STONE SUPPORTED BY A 20mm THICK ALUMINIUM HONEYCOMBE BACKING) WITH CONCEALED SUPPORT FIXING |

| REV | DATE | DESCRIPTION |
|-----|----------|---------------------|
| P1 | 16/01/23 | Issued For Approval |



M & M Contracts Ltd
Venture House
Downshire Way, Bracknell
RG12 1WA
T: +44 (0) 20 3239 0780
E: info@mmcontracts.co.uk
www.mmcontracts.co.uk

| | | |
|---------------------------------|--------------------------------|-----------------|
| Project | Job Number | Client |
| 5a Back Lane - Hampstead London | | Egg Limited |
| FOR APPROVAL | | |
| Drawn: EM | Date: Jan' 23 | Scale: 1:5 @ A3 |
| Reviewed by: DB | Drawing No. MM-32-CLAD-DET-607 | Rev. P1 |

| | | |
|---------------------------------|--------------------------------|-----------------|
| Project | Job Number | Client |
| 5a Back Lane - Hampstead London | | Egg Limited |
| FOR APPROVAL | | |
| Drawn: EM | Date: Jan' 23 | Scale: 1:5 @ A3 |
| Reviewed by: DB | Drawing No. MM-32-CLAD-DET-607 | Rev. P1 |

FASTFRAME (FIX/TEE/HD/100/60) ALUMINIUM
VERTICAL T-RAIL. FIXED TO HELPING HAND
BRACKETS. (CLASS A1 - FIRE RATED)

12mm WBP PLY SHEATHING
BY OTHERS

FASTFRAME - 80mm LONG BRACKET (FF FIX/BR/80 SINGLE
(FLEXIBLE POINT BRACKETS) BRACKET FIXED TO VERTICAL
'T' RAILS, BUT NOT EXCEEDING 600 MAX HORIZONTAL CRS &
600 MAX VERTICAL CRS. (CLASS A1 - FIRE RATED) (NOTE:
BRACKET SIZES VARY TO SUIT DIFFERENT CLADDING ZONES)

GUTTER (DETAILS TBC) TO DIVERT WATER RUN-OFF FROM
ROOFLIGHT TO DRAIN INTO PLANTERS. **BY OTHERS**

Ti-Tracking Rail

Ti TRACKING ALUMINIUM MID RAIL

HORIZONTAL FIXING CHANNELS SET INTO
ULTRALITE CASSETTE (CONTINUOUS)

FASTFRAME - 140mm LONG BRACKET (FF FIX/BR/140 SINGLE (FLEXIBLE POINT
BRACKETS) BRACKET FIXED TO VERTICAL 'T' RAILS, BUT NOT EXCEEDING
600 MAX HORIZONTAL CRS & 600 MAX VERTICAL CRS. (CLASS A1 - FIRE
RATED) (NOTE: BRACKET SIZES VARY TO SUIT DIFFERENT CLADDING ZONES)

27mm THICK AEROLITE MONOLITH CLADDING (7mm STONE
SUPPORTED BY A 20mm THICK ALUMINIUM HONEYCOMBE
BACKING) WITH CONCEALED SUPPORT FIXING

FASTFRAME - 140mm LONG BRACKET (FF FIX/BRD/140) DOUBLE (FIXED
POINT) BRACKET FIXED TO VERTICAL 'T' RAILS, BUT NOT EXCEEDING 600
MAX HORIZONTAL CRS & 600 MAX VERTICAL CRS. (CLASS A1 - FIRE RATED)
(NOTE: BRACKET SIZES VARY TO SUIT DIFFERENT CLADDING ZONES)

4No Off For Double Brackets) PCF/44/4.8 x 19 FOR
FIXING DOUBLE HELPING HAND BRACKETS ON TO
THE VERTICAL RAILS. (CLASS A1 - FIRE RATED)

4 x PCF/33/5.5x55 W15 FIXINGS - FIXING (DOUBLE)
HELPING HAND BRACKETS TO HORIZONTAL SUPPORT.

HORIZONTAL FIXING CHANNELS SET INTO
ULTRALITE CASSETTE (CONTINUOUS)

Ti TRACKING ALUMINIUM MID RAIL

40x60x2mm x 60mm LONG SUPPORT
BRACKET FIXED TO VERTICAL RAIL ON
EITHER ENDS OF THE PANE AT JOINTS

ANG-02
FAB-800

**ADDITIONAL CHANNEL
SUPPORT REQUIRED TO
PROVIDE SUPPORT FOR THE
SOFFITS TO BE DISCUSSED**

100 x 20 ALUMINIUM
BOX SECTION

End Ti Tracking ALUMINIUM
HORIZONTAL STARTER RAIL

**PANEL SUPPORT FOR SOFFIT
PANEL TO BE DISCUSSED
WITH (Ti DYNAMIC FACADES)**

A

FASTFRAME (FIX/TEE/HD/100/60) ALUMINIUM
VERTICAL T-RAIL. FIXED TO HELPING HAND
BRACKETS. (CLASS A1 - FIRE RATED)

End Ti Tracking ALUMINIUM
HORIZONTAL STARTER RAIL

NOTES:

ALL DIMENSIONS IN M.M. UNLESS NOTED

LEGEND

AER-05c1

INDICATES - 27mm THICK AEROLITE
MONOLITH CLADDING PANELS (7mm
STONE SUPPORTED BY A 20mm THICK
ALUMINIUM HONEYCOMBE BACKING)
WITH CONCEALED SUPPORT FIXING

| REV | DATE | DESCRIPTION |
|-----|----------|---------------------|
| P1 | 16/01/23 | Issued For Approval |



M & M Contracts Ltd
Venture House
Downshire Way, Bracknell
RG12 1WA

T: +44 (0) 20 3239 0780
E: info@mmcontracts.co.uk
www.mmcontracts.co.uk

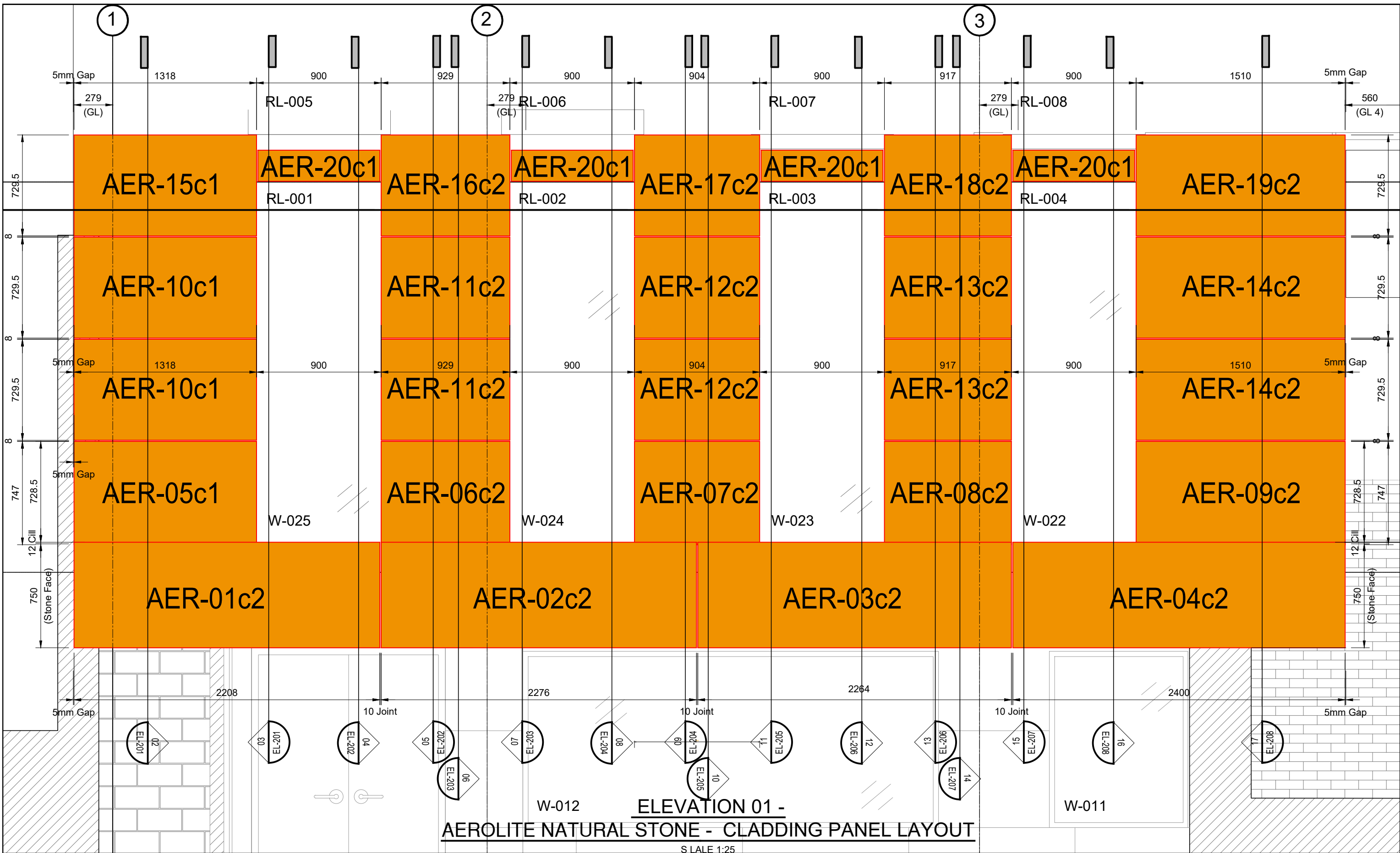
Project Job Number
5a Back Lane - Hampstead London

Drawing Title
Typical Vert Sec Thru Bottom Of Wall-
Aerolite Natural Stone Cladding

Client
Egg Limited

FOR APPROVAL

| | | | |
|-------------------|-----------------------------------|-----------------|-------|
| Drawn: EM | Date: Jan' 23 | Scale: 1:5 @ A3 | Xref: |
| Reviewed by DB | Drawing No. MM-32-CLAD-DET-605 | Rev. P1 | |



**ELEVATION 01 -
AEROLITE NATURAL STONE - CLADDING PANEL LAYOUT**
SCALE 1:25

NOTES:
ALL DIMENSIONS IN M.M. UNLESS NOTED

LEGEND

AER-05c1 INDICATES - 27mm THICK AEROLITE MONOLITH CLADDING PANELS (7mm STONE SUPPORTED BY A 20mm THICK ALUMINIUM HONEYCOMBE BACKING) WITH CONCEALED SUPPORT FIXING

| REV | DATE | DESCRIPTION |
|-----|----------|---------------------|
| P1 | 16/01/23 | Issued For Approval |

M & M Contracts Ltd
Venture House
Downshire Way, Bracknell
RG12 1WA

T: +44 (0) 20 3239 0780
E: info@mmcontracts.co.uk
www.mmcontracts.co.uk

Project: 5a Back Lane - Hampstead London
Job Number:
Drawing Title: Elevation 01
Aerolite Natural Stone - Cladding Panel Layout - Sheet 1

Client: Egg Limited

FOR APPROVAL

| | | | |
|-----------------|--------------------------------|------------------|-------|
| Drawn: EM | Date: Jan '23 | Scale: 1:25 @ A3 | Xref: |
| Reviewed by: DB | Drawing No.: MM-32-CLAD-EL-200 | Rev.: P1 | |

A

HOT AIR WELD
BY OTHERS

18mm WPB PLY
BY OTHERS

**PANEL SUPPORT FOR
PARAPET PANEL TO BE
DISCUSSED WITH (Ti
DYNAMIC FACADES)**

ARMOURPLAN PVC COATED METAL

Ti TRACKING ALUMINIUM MID RAIL

HORIZONTAL FIXING CHANNELS SET INTO
ULTRALITE CASSETTE (CONTINUOUS)

50mm TREATED TIMBER FRAMING ZONE FIXED TO STEEL PLATE
BY OTHERS.

50mm KINGSPAN K112 INSULATION BOARD
BY OTHERS

12mm WPB PLY SHEATHING
BY OTHERS

**End Ti Tracking ALUMINIUM
HORIZONTAL STARTER RAIL**

2mm THICK x 75mm WIDE CONTINUOUS FLAT
PLATE FIXED TO PARAPET IN OR DER TO
PROVIDE FIXING SUPPORT FOR THE **Ti
TRACKING ALUMINIUM RAIL**

Ti TRACKING ALUMINIUM MID RAIL

FASTFRAME (FIX/TEE/HD/100/60) ALUMINIUM VERTICAL T-RAIL.
FIXED TO HELPING HAND BRACKETS. (CLASS A1 - FIRE RATED)

27mm THICK AEROLITE MONOLITH CLADDING (7mm STONE
SUPPORTED BY A 20mm THICK ALUMINIUM HONEYCOMBE
BACKING) WITH CONCEALED SUPPORT FIXING

FASTFRAME - 80mm LONG BRACKET (FF FIX/BR/80 SINGLE
(FLEXIBLE POINT BRACKETS) BRACKET FIXED TO VERTICAL
'T' RAILS, BUT NOT EXCEEDING 600 MAX HORIZONTAL CRS &
600 MAX VERTICAL CRS. (CLASS A1 - FIRE RATED) (NOTE:
BRACKET SIZES VARY TO SUIT DIFFERENT CLADDING ZONES)

2 x PCF/33/5.5x35 W15 FIXINGS - FIXING
(SINGLE) HELPING HAND BRACKETS
TO HORIZONTAL SUPPORT.

NOTES:

ALL DIMENSIONS IN M.M. UNLESS NOTED

LEGEND

AER-05c1

INDICATES - 27mm THICK AEROLITE
MONOLITH CLADDING PANELS (7mm
STONE SUPPORTED BY A 20mm THICK
ALUMINIUM HONEYCOMBE BACKING)
WITH CONCEALED SUPPORT FIXING

| REV | DATE | DESCRIPTION |
|-----|----------|---------------------|
| P1 | 16/01/23 | Issued For Approval |



M & M Contracts Ltd

Venture House
Downshire Way, Bracknell
RG12 1WA

T: +44 (0) 20 3239 0780
E: info@mmcontracts.co.uk
www.mmcontracts.co.uk

Project

Job Number

Client

5a Back Lane - Hampstead London

Egg Limited

Drawing Title

Typical Vert Sec Thru Parapet Of
Wall - Aerolite Natural Stone Cladding

FOR APPROVAL

| | | | |
|-----------------|--------------------------------|-----------------|-------|
| Drawn: EM | Date: Jan' 23 | Scale: 1:5 @ A3 | Xref: |
| Reviewed by: DB | Drawing No. MM-32-CLAD-DET-606 | Rev. P1 | |

TYVEK FIRE CURB HOUSEWRAP - BREATHER MEMBRANE ON FACE OF BOARD (LAPPED & TAPED @ JOINTS: 100mm HORIZONTALLY & 150mm VERTICALLY) LAPPED OVER EPDM AT JAMB & HEAD LOCATIONS, ALSO TAPED ONTO BOARD EDGE TO ACHIEVE AIR & WATER TIGHTNESS.

PCF/33/5.5x55 W15 - FIXING VERTICAL SUPPORT RAIL TO HORIZONTAL SUPPORT RAIL.

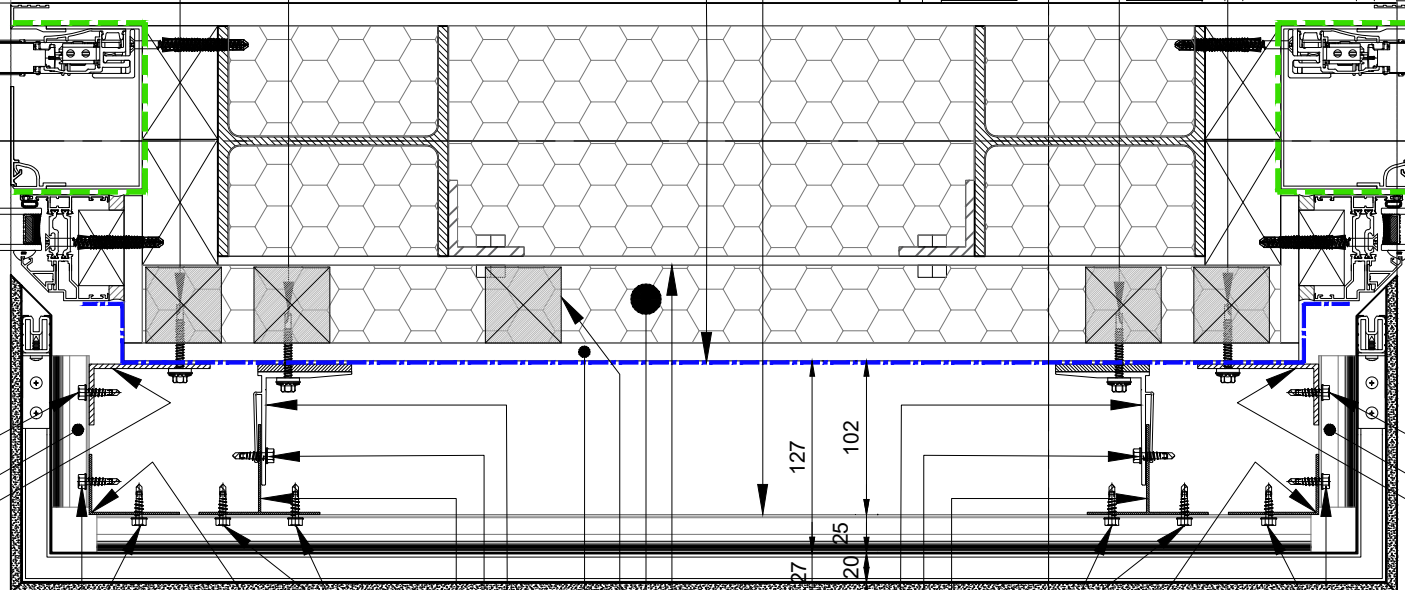
4 x PCF/33/5.5x35 W15 FIXINGS - FIXING (DOUBLE) or 2 x PCF/33/5.5x35 W15 FIXINGS - FIXING (SINGLE) HELPING HAND BRACKETS TO HORIZONTAL SUPPORT.

PCF/33/5.5x55 W15 - FIXING VERTICAL SUPPORT RAIL TO HORIZONTAL SUPPORT RAIL.

4 x PCF/33/5.5x35 W15 FIXINGS - FIXING (DOUBLE) or 2 x PCF/33/5.5x35 W15 FIXINGS - FIXING (SINGLE) HELPING HAND BRACKETS TO HORIZONTAL SUPPORT.

End Ti Tracking ALUMINIUM HORIZONTAL RAIL WITH SAFETY MOVEMENT GASKET

A



SFS SX3 or RIVETS FIXED AT VERTICAL RAIL

2 No SFS SX3 or RIVETS

6mm STEEL PLATE BOLTED TO STEEL FRAME TO S.E DETAILS **BY OTHERS.**

2 No SFS SX3 or RIVETS

SFS SX3 or RIVETS FIXED AT VERTICAL RAIL

End Ti Tracking ALUMINIUM HORIZONTAL RAIL WITH SAFETY MOVEMENT GASKET

FASTFRAME - (FIX/ANG/HD/40/60) ALUMINIUM VERTICAL L-RAIL. SUPPORT AT CORNER. (CLASS A1 - FIRE RATED)

FASTFRAME - (FIX/ANG/HD/40/60) ALUMINIUM VERTICAL L-RAIL. SUPPORT AT CORNER. (CLASS A1 - FIRE RATED)

End Ti Tracking ALUMINIUM HORIZONTAL RAIL WITH SAFETY MOVEMENT GASKET

ANG-01a
FAB-805

40x80x3mm THICK CONTINUOUS (STRUCTURAL GRADE ALUMINIUM 5251) SUPPORT ANGLE BRACKET RAIL (FIXED TO EVERY HORIZONTAL SUPPORT VERTICALLY) ON THE WALL TO PROVIDE SUPPORT FOR THE JAMB. (Dead Load Bracket To be In The Middle To Be Taken By Two Fixings And The Rest Of Brackets To Have Holea Being Oversized To Allow For Thermal Movement)

MIN 2 No SFS SX3 or RIVETS FIXED SYMMETRICALLY AT EACH VERTICAL RAIL

FASTFRAME (FIX/TEE/HD/100/60) ALUMINIUM VERTICAL T-RAIL. FIXED TO HELPING HAND BRACKETS. (CLASS A1 - FIRE RATED)

50mm KINGSPAN K112 INSULATION BOARD **BY OTHERS**

MIN 2 No SFS SX3 or RIVETS FIXED SYMMETRICALLY AT EACH VERTICAL RAIL

FASTFRAME (FIX/TEE/HD/100/60) ALUMINIUM VERTICAL T-RAIL. FIXED TO HELPING HAND BRACKETS. (CLASS A1 - FIRE RATED)

40x80x3mm THICK CONTINUOUS (STRUCTURAL GRADE ALUMINIUM 5251) SUPPORT ANGLE BRACKET RAIL (FIXED TO EVERY HORIZONTAL SUPPORT VERTICALLY) ON THE WALL TO PROVIDE SUPPORT FOR THE JAMB. (Dead Load Bracket To be In The Middle To Be Taken By Two Fixings And The Rest Of Brackets To Have Holea Being Oversized To Allow For Thermal Movement)

2No OFF (For Single & 4No Off For Double Brackets) PCF/44/4.8 x 19 FOR FIXING SINGLE & DOUBLE HELPING HAND BRACKETS ON TO THE VERTICAL RAILS. (CLASS A1 - FIRE RATED)

50mm TREATED TIMBER FRAMING ZONE FIXED TO STEEL PLATE **BY OTHERS.**

2No OFF (For Single & 4No Off For Double Brackets) PCF/44/4.8 x 19 FOR FIXING SINGLE & DOUBLE HELPING HAND BRACKETS ON TO THE VERTICAL RAILS. (CLASS A1 - FIRE RATED)

FASTFRAME - 80mm LONG BRACKET (FF FIX/BR/80 SINGLE (FLEXIBLE POINT BRACKETS) or (FF FIX/BRD/80) DOUBLE (FIXED POINT) BRACKET FIXED TO VERTICAL 'L' & 'T' RAILS, BUT NOT EXCEEDING 600 MAX HORIZONTAL CRS & 600 MAX VERTICAL CRS. (CLASS A1 - FIRE RATED) (NOTE: BRACKET SIZES VARY TO SUIT DIFFERENT CLADDING ZONES)

12mm WBP PLY SHEATHING **BY OTHERS**

FASTFRAME - 80mm LONG BRACKET (FF FIX/BR/80 SINGLE (FLEXIBLE POINT BRACKETS) or (FF FIX/BRD/80) DOUBLE (FIXED POINT) BRACKET FIXED TO VERTICAL 'L' & 'T' RAILS, BUT NOT EXCEEDING 600 MAX HORIZONTAL CRS & 600 MAX VERTICAL CRS. (CLASS A1 - FIRE RATED) (NOTE: BRACKET SIZES VARY TO SUIT DIFFERENT CLADDING ZONES)

27mm THICK AEROLITE MONOLITH CLADDING (7mm STONE SUPPORTED BY A 20mm THICK ALUMINIUM HONEYCOMBE BACKING) WITH CONCEALED SUPPORT FIXING

3

NOTES:

ALL DIMENSIONS IN M.M. UNLESS NOTED

LEGEND

AER-05c1

INDICATES - 27mm THICK AEROLITE MONOLITH CLADDING PANELS (7mm STONE SUPPORTED BY A 20mm THICK ALUMINIUM HONEYCOMBE BACKING) WITH CONCEALED SUPPORT FIXING

| REV | DATE | DESCRIPTION |
|-----|----------|---------------------|
| P1 | 16/01/23 | Issued For Approval |



M & M Contracts Ltd

Venture House
Downshire Way, Bracknell
RG12 1WA

T: +44 (0) 20 3239 0780
E: info@mmcontracts.co.uk
www.mmcontracts.co.uk

Project

Job Number

Client

5a ack Lane - Hampstead London

Egg Limited

Drawing Title

Typical Jamb Detail - Aerolite Natural Stone Cladding - Sheet 3

FOR APPROVAL

| | | | |
|-----------------|--------------------------------|-----------------|-------|
| Drawn: EM | Date: Jan' 23 | Scale: 1:5 @ A3 | Xref: |
| Reviewed by: DB | Drawing No: MM-31-CLAD-DET-602 | Rev: P1 | |