

Refer to ARP3-FAB-ZZ-00-DR-L-903004 & Refer to ARP3-FAB-ZZ-00-DR-L-903007

Refer to ARP3-FAB-ZZ-00-DR-L-903003 & Refer to ARP3-FAB-ZZ-00-DR-L-903006

- Mix 5 - Rain Garden
- 18 No. Allium 'Christophii' 2.5% 9cm
 - 18 No. Allium 'Silver Spring' 2.5% 9cm
 - 19 No. Artemisia ludoviciana 'Silver Queen' 6% 2L
 - 18 No. Baptisia australis 5.5% 2L
 - 27 No. Carex morrowii 'Ice Dance' 10% 2L
 - 18 No. Echinacea purpurea 'White Swan' 5.5% 2L
 - 19 No. Gaura lindheimeri 'Whirling Butterflies' 6% 2L
 - 18 No. Iris sibirica 'Ottawa' 2.5% 9cm
 - 8 No. Libertia grandiflora 2.5% 2L
 - 6 No. Miscanthus sinensis 'Kleine Fontane' 3% 2L
 - 9 No. Panicum virgatum 'Northwind' 5% 2L
 - 21 No. Rudbeckia fulgida sullivantii 'Goldsturm' 6.5% 2L
 - 19 No. Salvia nemorosa 'Caradonna' 6% 2L
 - 32 No. Sedum spectabile 'Herbstfreude' 10% 2L
 - 32 No. Sesleria autumnalis 10% 2L
 - 3 No. Stipa gigantea 1.5% 9cm
 - 27 No. Stipa tenuissima 'Pony Tails' 10% 2L
 - 16 No. Verbena bonariensis 5% 2L
- Total = 328 No.

- Mix 5 - Rain Garden
- 40 No. Allium 'Christophii' 2.5% 9cm
 - 40 No. Allium 'Silver Spring' 2.5% 9cm
 - 42 No. Artemisia ludoviciana 'Silver Queen' 6% 2L
 - 39 No. Baptisia australis 5.5% 2L
 - 60 No. Carex morrowii 'Ice Dance' 10% 2L
 - 39 No. Echinacea purpurea 'White Swan' 5.5% 2L
 - 42 No. Gaura lindheimeri 'Whirling Butterflies' 6% 2L
 - 40 No. Iris sibirica 'Ottawa' 2.5% 9cm
 - 18 No. Libertia grandiflora 2.5% 2L
 - 12 No. Miscanthus sinensis 'Kleine Fontane' 3% 2L
 - 20 No. Panicum virgatum 'Northwind' 5% 2L
 - 46 No. Rudbeckia fulgida sullivantii 'Goldsturm' 6.5% 2L
 - 42 No. Salvia nemorosa 'Caradonna' 6% 2L
 - 70 No. Sedum spectabile 'Herbstfreude' 10% 2L
 - 70 No. Sesleria autumnalis 10% 2L
 - 6 No. Stipa gigantea 1.5% 9cm
 - 60 No. Stipa tenuissima 'Pony Tails' 10% 2L
 - 35 No. Verbena bonariensis 5% 2L
- Total = 721 No.

- Mix 3 - Purple
- 8 No. Aquilegia vulgaris 'Black Barlow' 15% 20-30cm 2L
 - 9 No. Bergenia cordifolia 'Purpurea' 20% 2L
 - 8 No. Geranium 'Rozanne' 15% 20-30cm 2L
 - 3 No. Hebe 'Red Edge' 10% 25-30cm 3L
 - 7 No. Polystichum setiferum 15% 20-30cm 2L
 - 3 No. Sarcococca hookeriana var. humilis 10% 25-30cm 3L
 - 8 No. Vinca major 15% 20-30cm 2L
- Total = 46 No.

- 49 No. Calamagrostis x arutiflora 'Karl Foerster' 3L
- 11 No. Skimmia japonica 'Rubella' 30-40cm 3L

- Mix 2 - White
- 8 No. Anemone x hybrida 'Honorine Jobert' 15% 20-30cm 2L
 - 7 No. Asplenium scolopendrium 15% 20-30cm 2L
 - 8 No. Liriope muscari 'Monroe White' 15% 20-30cm 2L
 - 9 No. Luzula nivea 20% 2L
 - 8 No. Pachysandra terminalis 'Green Carpet' 15% 20-30cm 2L
 - 3 No. Pittosporum tenuifolium 'Golf Ball' 10% 25-30cm 3L
 - 3 No. Sarcococca hookeriana var. humilis 10% 25-30cm 3L
- Total = 46 No.

- Mix 1 - Blue
- 11 No. Brunnera macrophylla 'Jack Frost' 15% 20-30cm 2L
 - 12 No. Carex morrowii 'Ice Dance' 20% 2L
 - 9 No. Dryopteris erythrosora 15% 20-30cm 2L
 - 4 No. Hebe rakaiensis 10% 25-30cm 3L
 - 11 No. Liriope muscari 'Big Blue' 15% 20-30cm 2L
 - 4 No. Sarcococca hookeriana var. humilis 10% 25-30cm 3L
 - 11 No. Vinca minor 15% 20-30cm 2L
- Total = 62 No.

- Mix 3 - Purple
- 9 No. Aquilegia vulgaris 'Black Barlow' 15% 20-30cm 2L
 - 10 No. Bergenia cordifolia 'Purpurea' 20% 2L
 - 9 No. Geranium 'Rozanne' 15% 20-30cm 2L
 - 4 No. Hebe 'Red Edge' 10% 25-30cm 3L
 - 8 No. Polystichum setiferum 15% 20-30cm 2L
 - 4 No. Sarcococca hookeriana var. humilis 10% 25-30cm 3L
 - 9 No. Vinca major 15% 20-30cm 2L
- Total = 53 No.

- Mix 2 - White
- 15 No. Anemone x hybrida 'Honorine Jobert' 15% 20-30cm 2L
 - 13 No. Asplenium scolopendrium 15% 20-30cm 2L
 - 15 No. Liriope muscari 'Monroe White' 15% 20-30cm 2L
 - 17 No. Luzula nivea 20% 2L
 - 15 No. Pachysandra terminalis 'Green Carpet' 15% 20-30cm 2L
 - 6 No. Pittosporum tenuifolium 'Golf Ball' 10% 25-30cm 3L
 - 6 No. Sarcococca hookeriana var. humilis 10% 25-30cm 3L
- Total = 87 No.

- Mix 1 - Blue
- 13 No. Brunnera macrophylla 'Jack Frost' 15% 20-30cm 2L
 - 14 No. Carex morrowii 'Ice Dance' 20% 2L
 - 11 No. Dryopteris erythrosora 15% 20-30cm 2L
 - 5 No. Hebe rakaiensis 10% 25-30cm 3L
 - 13 No. Liriope muscari 'Big Blue' 15% 20-30cm 2L
 - 5 No. Sarcococca hookeriana var. humilis 10% 25-30cm 3L
 - 13 No. Vinca minor 15% 20-30cm 2L
- Total = 74 No.

- Mix 3 - Purple
- 8 No. Aquilegia vulgaris 'Black Barlow' 15% 20-30cm 2L
 - 9 No. Bergenia cordifolia 'Purpurea' 20% 2L
 - 8 No. Geranium 'Rozanne' 15% 20-30cm 2L
 - 3 No. Hebe 'Red Edge' 10% 25-30cm 3L
 - 7 No. Polystichum setiferum 15% 20-30cm 2L
 - 3 No. Sarcococca hookeriana var. humilis 10% 25-30cm 3L
 - 8 No. Vinca major 15% 20-30cm 2L
- Total = 46 No.

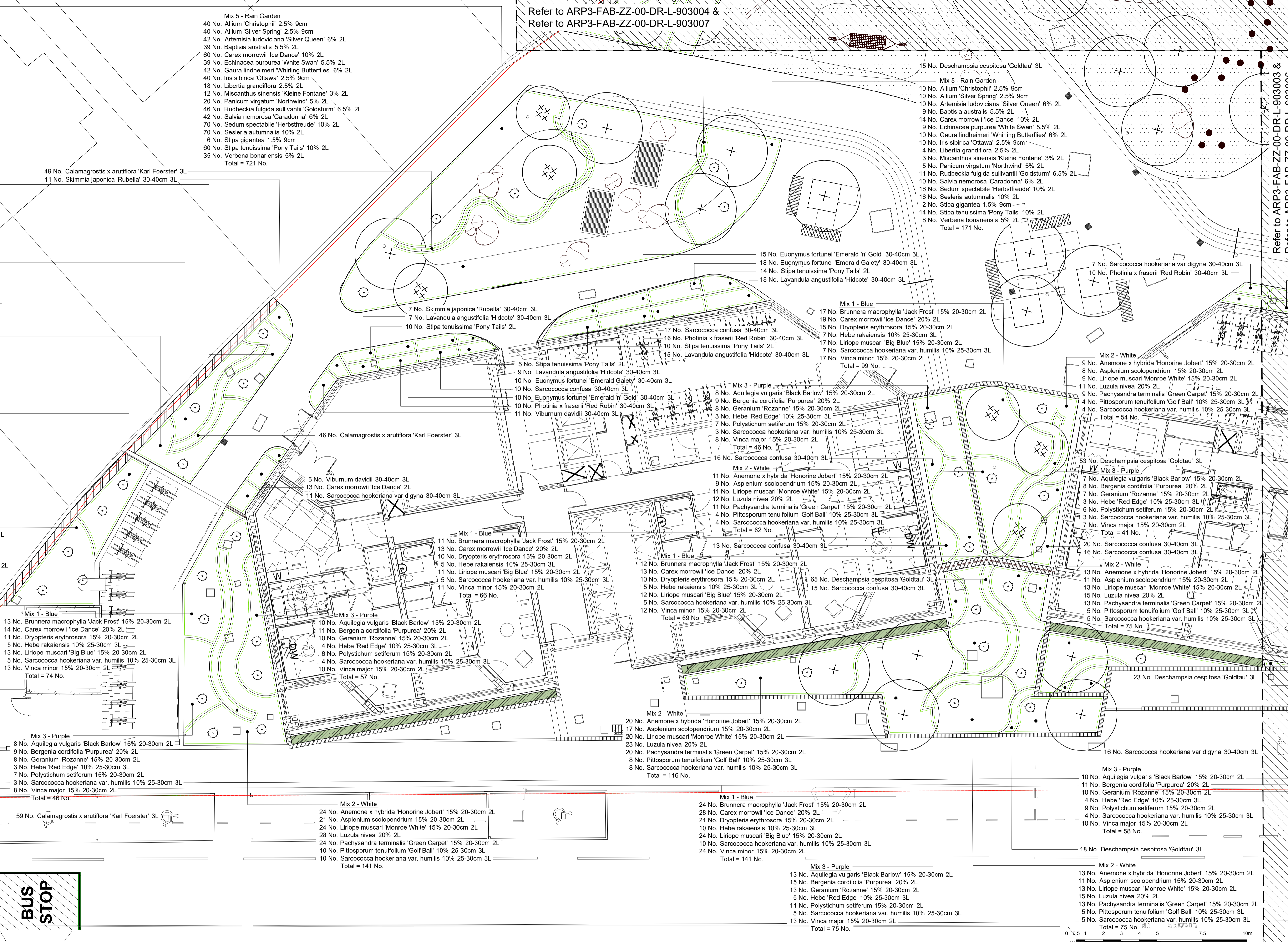
- Mix 3 - Purple
- 13 No. Brunnera macrophylla 'Jack Frost' 15% 20-30cm 2L
 - 14 No. Carex morrowii 'Ice Dance' 20% 2L
 - 11 No. Dryopteris erythrosora 15% 20-30cm 2L
 - 5 No. Hebe rakaiensis 10% 25-30cm 3L
 - 13 No. Liriope muscari 'Big Blue' 15% 20-30cm 2L
 - 5 No. Sarcococca hookeriana var. humilis 10% 25-30cm 3L
 - 13 No. Vinca minor 15% 20-30cm 2L
- Total = 74 No.

- Mix 3 - Purple
- 8 No. Aquilegia vulgaris 'Black Barlow' 15% 20-30cm 2L
 - 9 No. Bergenia cordifolia 'Purpurea' 20% 2L
 - 8 No. Geranium 'Rozanne' 15% 20-30cm 2L
 - 3 No. Hebe 'Red Edge' 10% 25-30cm 3L
 - 7 No. Polystichum setiferum 15% 20-30cm 2L
 - 3 No. Sarcococca hookeriana var. humilis 10% 25-30cm 3L
 - 8 No. Vinca major 15% 20-30cm 2L
- Total = 46 No.

- Mix 3 - Purple
- 13 No. Brunnera macrophylla 'Jack Frost' 15% 20-30cm 2L
 - 14 No. Carex morrowii 'Ice Dance' 20% 2L
 - 11 No. Dryopteris erythrosora 15% 20-30cm 2L
 - 5 No. Hebe rakaiensis 10% 25-30cm 3L
 - 13 No. Liriope muscari 'Big Blue' 15% 20-30cm 2L
 - 5 No. Sarcococca hookeriana var. humilis 10% 25-30cm 3L
 - 13 No. Vinca minor 15% 20-30cm 2L
- Total = 74 No.

- Mix 3 - Purple
- 8 No. Aquilegia vulgaris 'Black Barlow' 15% 20-30cm 2L
 - 9 No. Bergenia cordifolia 'Purpurea' 20% 2L
 - 8 No. Geranium 'Rozanne' 15% 20-30cm 2L
 - 3 No. Hebe 'Red Edge' 10% 25-30cm 3L
 - 7 No. Polystichum setiferum 15% 20-30cm 2L
 - 3 No. Sarcococca hookeriana var. humilis 10% 25-30cm 3L
 - 8 No. Vinca major 15% 20-30cm 2L
- Total = 46 No.

- Mix 3 - Purple
- 13 No. Brunnera macrophylla 'Jack Frost' 15% 20-30cm 2L
 - 14 No. Carex morrowii 'Ice Dance' 20% 2L
 - 11 No. Dryopteris erythrosora 15% 20-30cm 2L
 - 5 No. Hebe rakaiensis 10% 25-30cm 3L
 - 13 No. Liriope muscari 'Big Blue' 15% 20-30cm 2L
 - 5 No. Sarcococca hookeriana var. humilis 10% 25-30cm 3L
 - 13 No. Vinca minor 15% 20-30cm 2L
- Total = 74 No.

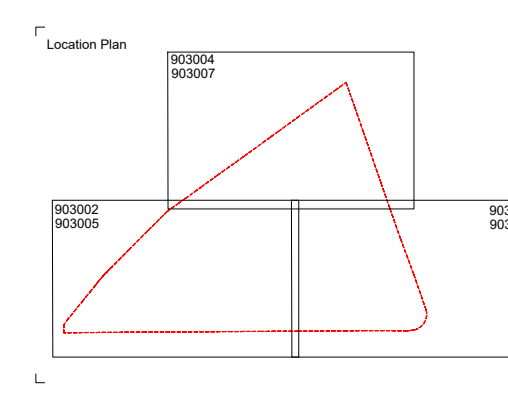


Copyright 2017. All rights reserved. All Open Data is Crown copyright and database right 2017.

| Rev | Date | By | Check | Description |
|-----|----------|----|-------|---|
| 1 | 19.05.23 | JN | JN | STAGE 4A ISSUE - SALVAGED BENCH AND SCULPTURE REMOVED |
| 2 | 21.01.23 | JN | JN | STAGE 4A ISSUE |

External References: D2857-FAB-X-LANDSCAPE-PLANTING-GA

- Drawing Information
- ARP3-FAB-ZZ-00-SH-L-903000 Soft Landscape Specification Notes
 - ARP3-FAB-ZZ-00-SH-L-903001 Detailed Planting Schedule
 - ARP3-FAB-ZZ-00-DR-L-903002 Detailed Planting Plan - Sheet 1 of 6 - Trees, Hedges & Specimens
 - ARP3-FAB-ZZ-00-DR-L-903003 Detailed Planting Plan - Sheet 2 of 6 - Trees, Hedges & Specimens
 - ARP3-FAB-ZZ-00-DR-L-903004 Detailed Planting Plan - Sheet 3 of 6 - Trees, Hedges & Specimens
 - ARP3-FAB-ZZ-00-DR-L-903005 Detailed Planting Plan - Sheet 4 of 6 - Groundcover & Matrix Mixes
 - ARP3-FAB-ZZ-00-DR-L-903006 Detailed Planting Plan - Sheet 5 of 6 - Groundcover & Matrix Mixes
 - ARP3-FAB-ZZ-00-DR-L-903007 Detailed Planting Plan - Sheet 6 of 6 - Groundcover & Matrix Mixes



fabik landscape architects
 10 Lennox Street | Abbots | Hampshire | GU24 1HG
 T: 01429 392350 | E: info@fabik.com | W: www.fabik.com

Project: **Abbey Area Phase 3**
 Drawing Title: **Detailed Planting Plan - Sheet 4 of 6**
 Client: **Wates**

Issue of Issue: **ISSUED FOR TENDER**
 Drawn By: **JN** | Checked By: **DY** | Drawn Date: **1:100 @ A1** | Date of First Issue: **Jan 1 2023**

Project Number: **D2857** | Drawing Number: **ARP3-FAB-ZZ-00-DR-L-903005** | Revision: **P02**