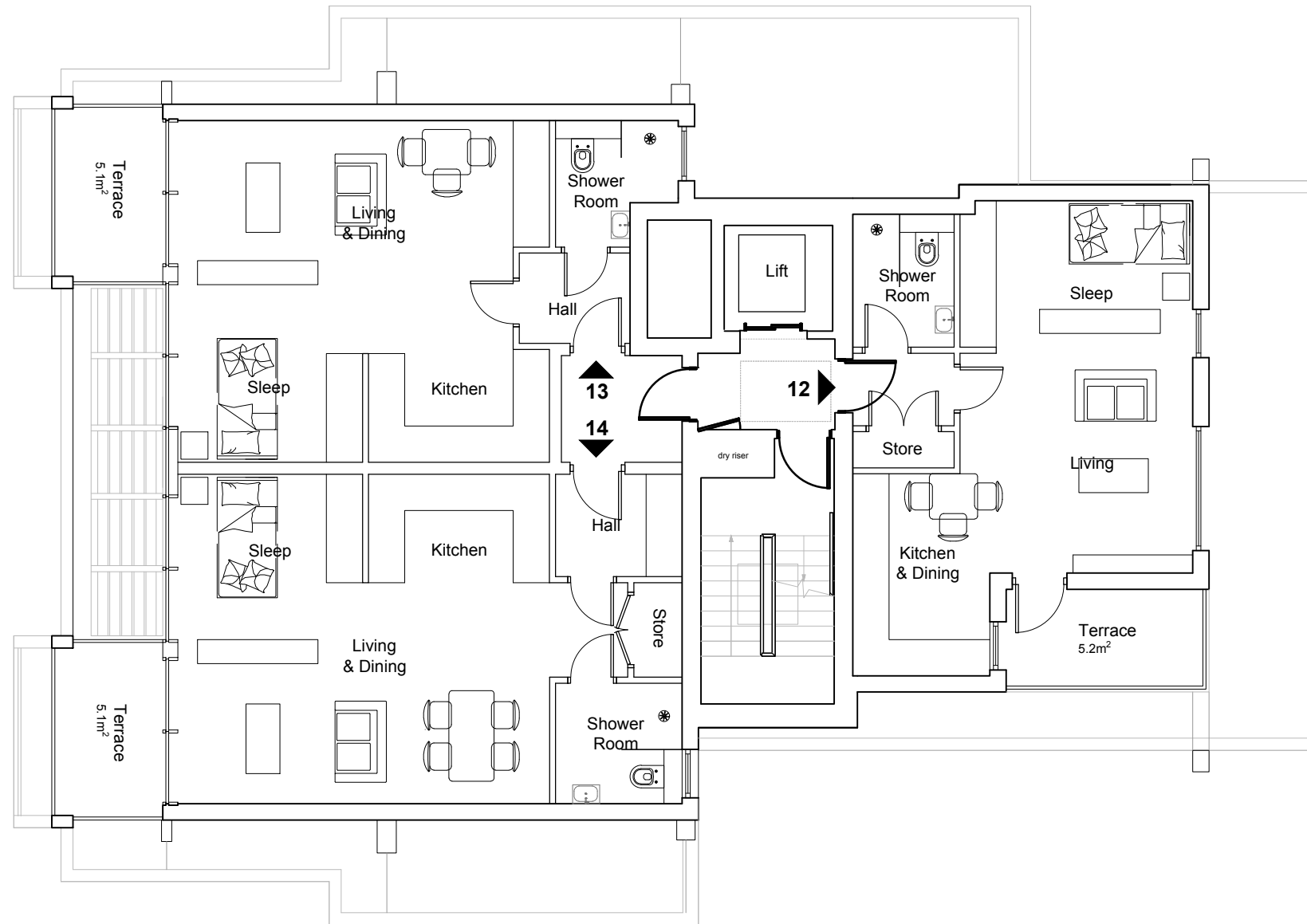


**Notes:**

Subject to a full measured survey  
Subject to Structural Engineers survey and Design



**Accommodation Schedule**

- Unit 12 - 38m<sup>2</sup> - 1-bed/1-person flat
- Unit 13 - 41m<sup>2</sup> - 1-bed/1-person flat
- Unit 14 - 46m<sup>2</sup> - 1-bed/1-person flat



**523 FINCHLEY ROAD - PROPOSED FOURTH FLOOR PLAN**

