

DISCHARGE OF CONDITIONS 20 ETON VILLAS, LONDON

Planning Ref: 2022/0017/P

Enlargement of existing dormer windows to front and rear elevations, and installation of rooflights to side elevation, alteration to the front boundary treatment, the front and rear patio areas and alterations to windows on flank elevation.

DISCHARGE OF CONDITIONS - 2022/0017P

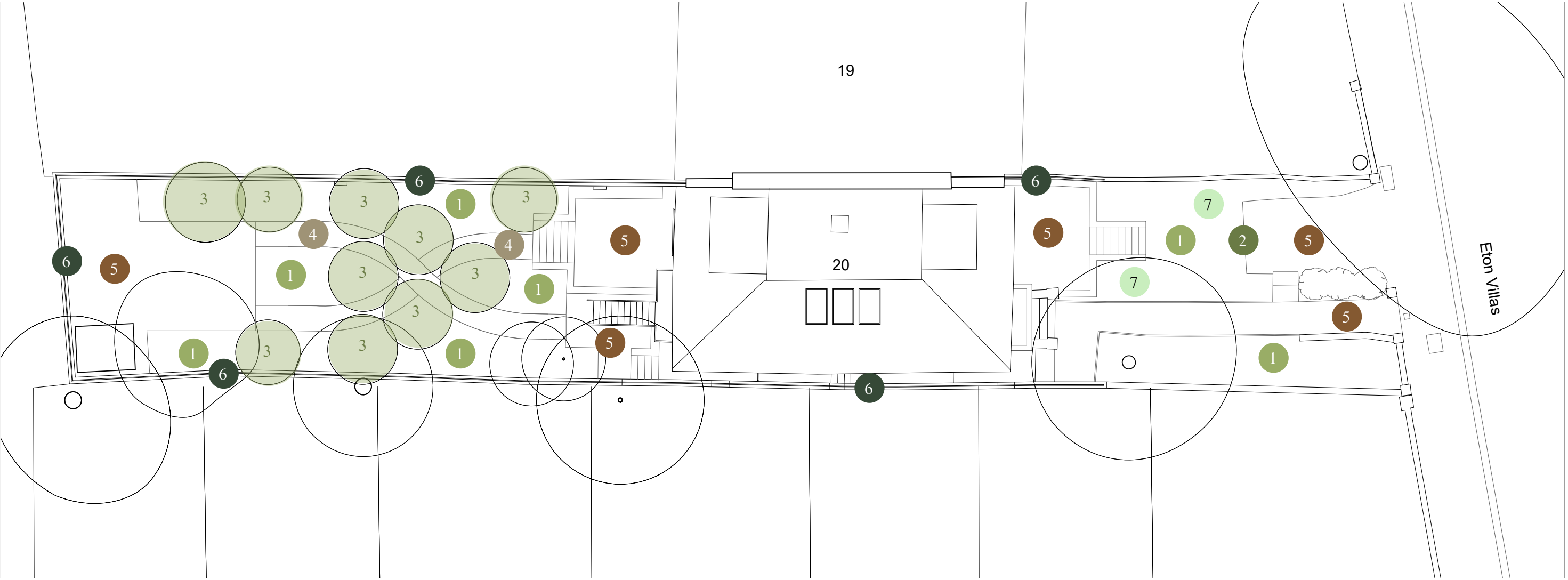
The following document along with the attached drawings shows details and further information of proposed renovation works at 20 Eton Villas.

This document seeks to discharge Condition No. 4 relating to application ref 2022/0017P:

Condition No. 4

Prior to relevant part of work begun, full details of hard and soft landscaping and means of enclosure of all un-built, open areas, to include front and rear gardens have been submitted to and approved by the local planning authority in writing.

Condition No. 4 - Details of hard and soft landscaping, front and rear gardens



- 1

01. Planting
Herbaceous planting and shrubs
- 2

02. Pleached Trees
Used to define garden zones
- 3

03. Trees
New trees to be added
- 4

04. Hoggins Path
Crushed Sand pathway
- 5

05. Stone Paving
e.g. Buff York Stone
- 6

06. Trellis
Timber trellace
- 7

07. Lawn

Soft Landscaping



Herbaceous planting and shrubs



Pleached Trees



Trees

Hard Landscaping



Hoggins Path (crushed sand)
Permeable



Stone Paving (Buff York Stone, to match existing)

Trellis



Trellis colour TBC