

Please note that information used to produce these drawings is based on measured survey supplied by others; Heritage Architecture cannot be held responsible for any inaccuracies that may exist. Please do not scale from the drawings. All dimensions should be verified on site. Any inconsistencies should be reported to the project architect.

Drawing to be read in conjunction with the Heritage and Design & Access Statement by Heritage Architecture Ltd. 2023 and datasheets in Appendices.

Any dimensions detailed in this drawing are in millimeters.

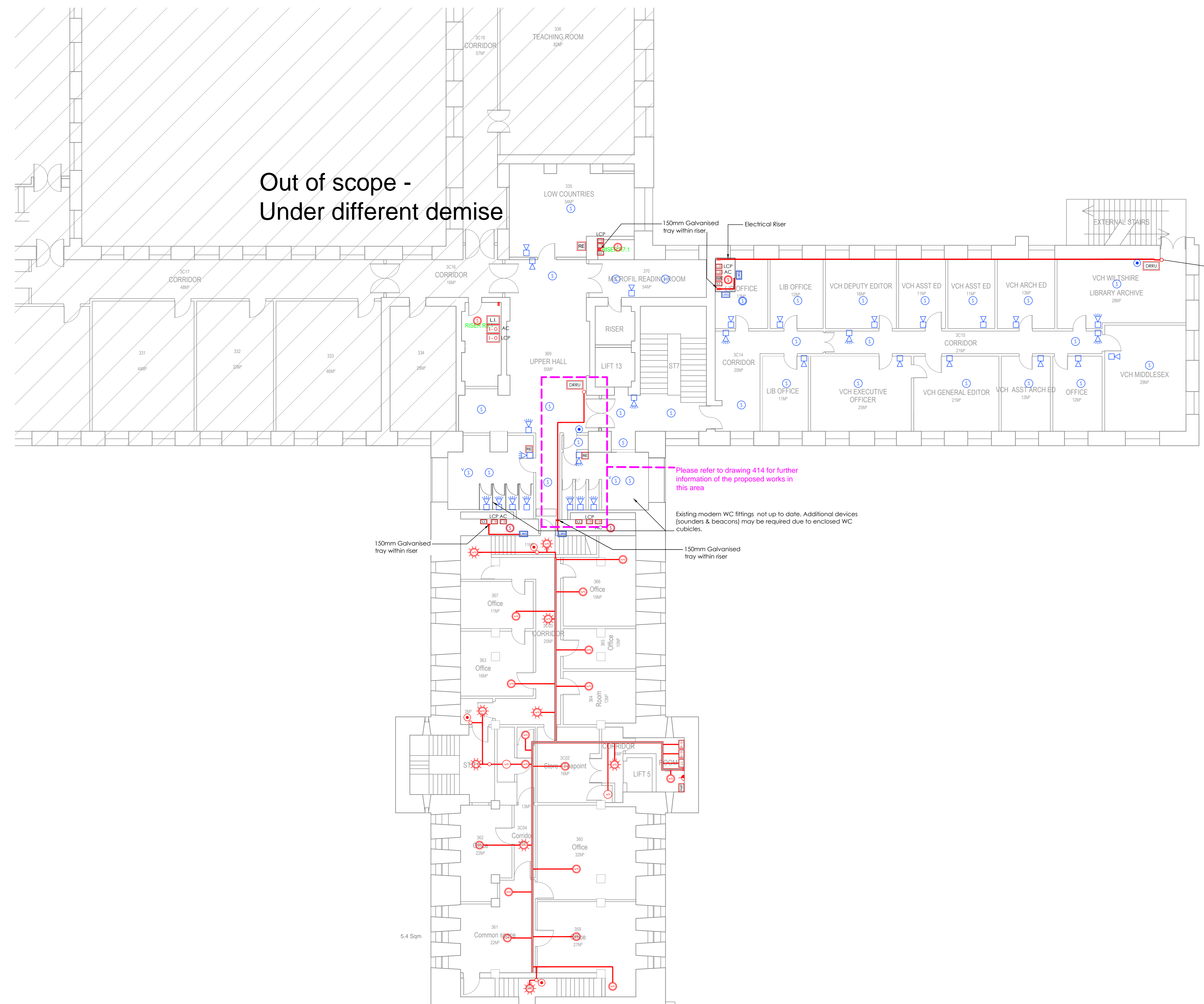
The drawings are protected by copyright. All copyrights with Heritage Architecture Ltd and Anslow Partnership.

Notes

- This drawing is an Outline Design showing the relative location of the proposed devices. The final locations of the proposed devices are subject to the final assessment to be carried out by the specialist contractors once listed building consent has been granted.
- If the proposal materially differs from the outline design included here, a new LBC application will be submitted. Additional details can be provided as a Discharge of Condition if required.
- This drawing indicates design intent only and shall not be used as an installation or working drawing.
- All colour finishes to all fire alarm accessories will depend on the final manufacturer (based on tender process), but will be minimally visually intrusive and in keeping with the general colour scheme of the background space.
- Existing routes and penetrations will be utilised wherever feasible. Where new routes/penetrations are required these have been highlighted in green. Please refer to associated drawings as noted for detailed markups on photographs (included within submitted drawings).
- The proposed Fire Alarm System classification is L2.
- The system shall be designed, installed, tested and commissioned in accordance with the following standards: BS5839-1:2017, BS5839-6:2013, BS5839-8:2013, BS729-1:2008 and LPS1014. Issue 5 requirements for Certified Fire Detection and Alarm Systems.

SYMBOL LEGEND

- Ceiling-mounted Wireless Devices:**
- Smoke Detector
 - Heat Detector
- Wall-mounted Wireless Devices:**
- Manual call point
 - Sounder & Flashing Beacon
 - Sounder
 - Fire Alarm Interface:
 - AC - Access Control
 - AV - Audio Visual
 - FS - Fire Shutter
- Ceiling-mounted Hardwired Devices:**
- Smoke Detector
 - Combined Smoke Detector & Sounder
 - Combined Smoke Detector, Sounder & Flashing Beacon
 - Heat Detector
 - Combined Heat Detector & Sounder
- Wall-mounted Hardwired Devices:**
- Fire Alarm Panel
 - Fire Alarm Repeater Panel
 - Manual call point
 - Sounder & Flashing Beacon
 - Wall mounted sounder
 - Fire Alarm interface
 - AC - Access Control
 - FS - Fire Shutter
 - BMS - Building Management System
 - SS - Sprinkler System
 - MFD - Motorised Fire Dumper
 - LCP - Lighting Control Panel
 - AV - Audio Visual
 - RT - Retail Units
 - V - Void
 - 13A Unswitched fused connection unit with neon indicator
 - Fire Alarm Panel (Secure mains voltage safety isolator with safety key switch)
 - Loop Isolator
 - Loop-Powered Wireless Gateway (for wireless devices)
- Wall-mounted Refuge Devices:**
- Disabled Refuge Remote Unit
 - Disabled Refuge Master Panel
 - Remote Lamp Buzzer
- Surface-mounted cables/conduits:**
- 25/32mm Galvanised Conduit from Ceiling surface mounted and fixed to a Steel Box (For Fire Alarm Detectors, Call Points, Electrical accessories etc.)
 - 25/32mm 1 way Stop-end Galvanised Conduit Box
 - 25/32mm Galvanised Conduit run to surface back steel boxes, stop end box etc.
 - 150mm Galvanised tray within riser.



Out of scope - Under different demise

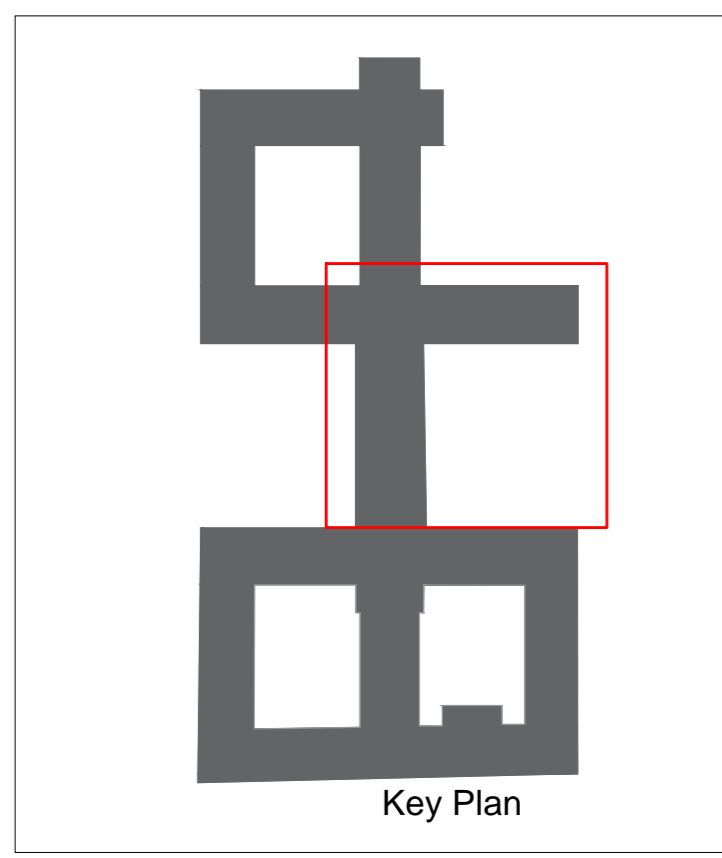
The proposed DRRU will replace an existing device. Existing power supply and cabling infrastructure will be retained and utilised for the proposals.

This drawing is only indicative. Exact location of proposed conduit will be subject to inspections carried out by the contractor.

Please refer to drawing 414 for further information of the proposed works in this area

Existing modern WC fittings: not up to date. Additional devices (sounders & beacons) may be required due to enclosed WC cubicles.

FOR CONTINUATION REFER TO DRAWING 310



JOB TITLE
Senate House Library
University of London

DRAWING TITLE
FIRE ALARM SYSTEM LAYOUT (Proposed)
THIRD FLOOR - TOWER & NORTH BLOCK

JOB No DWG No REV
N2865 311 A

DRAWN BY CHECKED BY SCALE (BAU) DATE
DYT NS 1:100 MAY/23

STEPHEN LEVRANT HERITAGE ARCHITECTURE

62 British Grove, London, W4 2NL
E-mail: info@heritagearchitecture.co.uk T: 020 8748 5501

The Anslow Partnership
Consulting Engineers

1st Floor
John Stow House
18 Benet Walk
London, EC3A 7JB
Telephone: (020) 7533 2030
email: info@anslowpartnership.co.uk