

Please note that information used to produce these drawings is based on measured survey supplied by others; Heritage Architecture cannot be held responsible for any inaccuracies that may exist. Please do not scale from the drawings. All dimensions should be verified on site. Any inconsistencies should be reported to the project architect.

Drawing to be read in conjunction with the Heritage and Design & Access Statement by Heritage Architecture Ltd. 2023 and datasheets in Appendices.

Any dimensions detailed in this drawing are in millimeters.

The drawings is protected by copyright. All copyrights with Heritage Architecture Ltd and Anslow Partnership.

NOTES

1. The information contained in this drawing is provided by the University of London, showing the existing fire alarm as installed by BBC between 2009 and 2015.
2. Locations of existing conduits/ electrical routes in the building are based on the best estimate, where they are concealed by later finishes/ ducting.
3. All existing Fire Alarm devices are proposed to be removed. The proposed removal of existing devices and associated cables do not include demolition of historic fabric.
4. Any cabling embedded in a wall or ceiling will be left in situ to minimise potential intervention to the historic fabric. Only external cabling and associated fixings will be fully removed.

SYMBOL LEGEND

Ceiling-mounted Hardwired Devices (proposed to remove):

- SD Fire Alarm Smoke Detector
- HD Fire Alarm Heat Detector
- SD/SB Smoke Detector with Base Sounder
- HD/SB Heat Detector with Base Sounder
- SD/S Smoke Detector with Base Sounder
- HD/S Heat Detector with Base Sounder

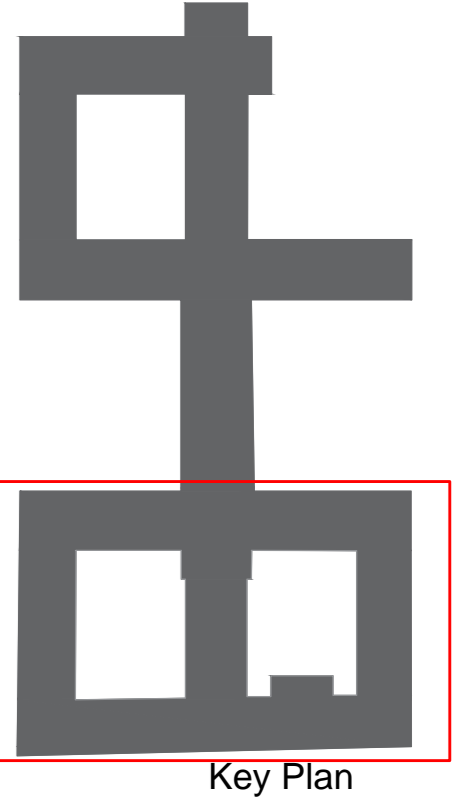
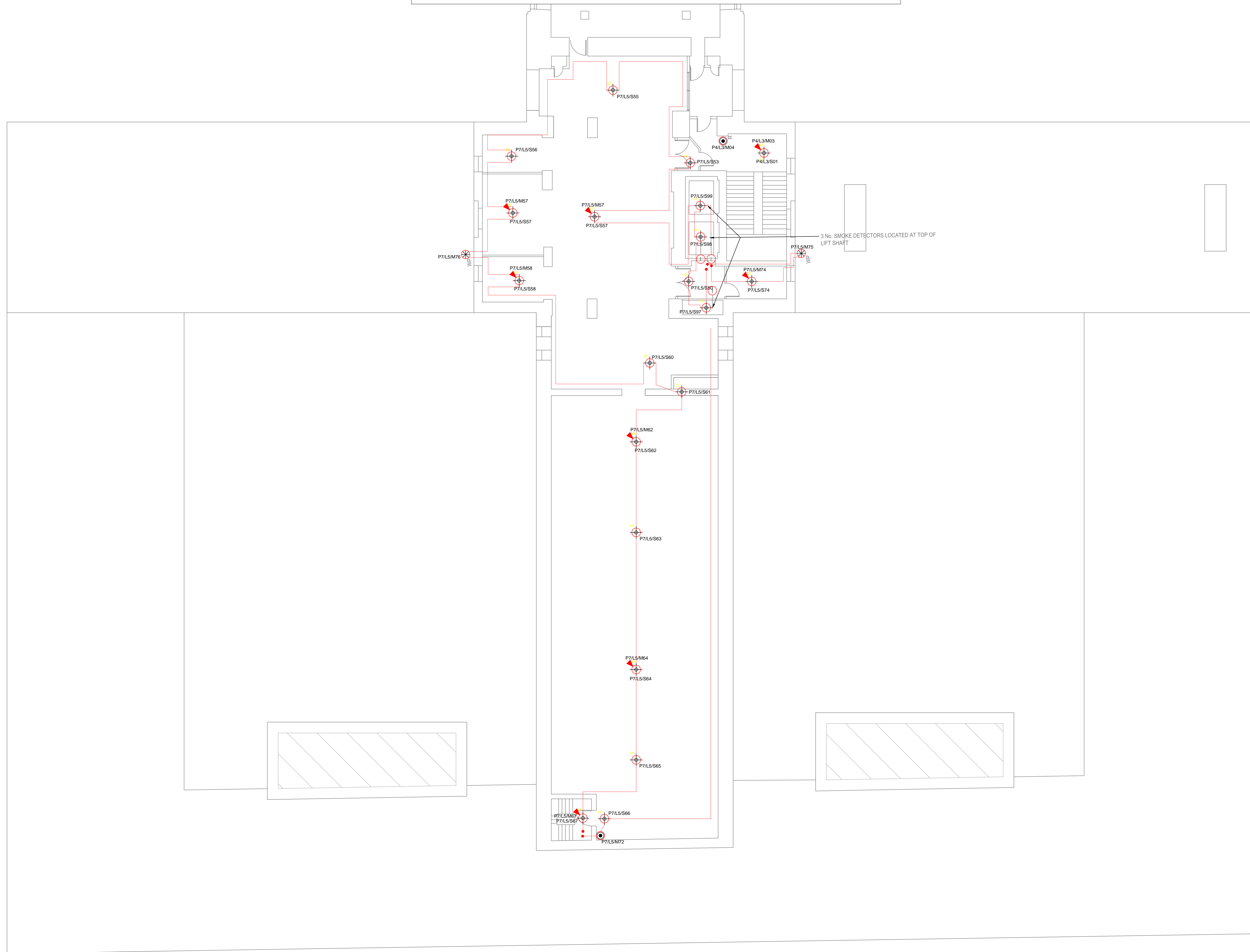
Wall-mounted Wireless Devices (proposed to remove):

- MANUAL CALL POINT
- SOUNDER UNIT WITH LED BEACON
- FIRE ALARM INTERFACE UNIT
- TR BEAM DETECTION TRANSMITTER
- BEAM DETECTION RECEIVER
- DOOR HOLD OPEN DEVICE
- FIRE ALARM SLAVE PANEL

Surface-mounted cables/conduits (proposed to remove):

- CABLES/ CONDUITS

FOR CONTINUATION REFER TO DRAWING 117



JOB TITLE
Senate House Library
University of London

DRAWING TITLE
FIRE ALARM SYSTEM LAYOUT (As Existing)
SIXTH FLOOR - SOUTH BLOCK

JOB No	DWG No	REV
N2865	116	A
DRAWN BY	CHECKED BY	SCALE (B/A0)
DYT	NS	1:100
		DATE
		MAY/23



© British Grove, London, W4 2NL
E-mail: info@heritagearchitecture.co.uk T: 020 8748 5501

The Anslow Partnership
Consulting Engineers

1st Floor
John Snow House
18 Bevis Works
London, EC3A 7JH
Telephone: (20) 7533 2000
email: info@tapconsulting.co.uk