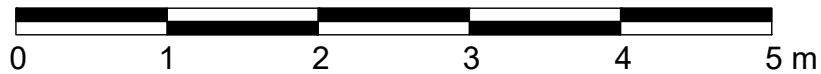
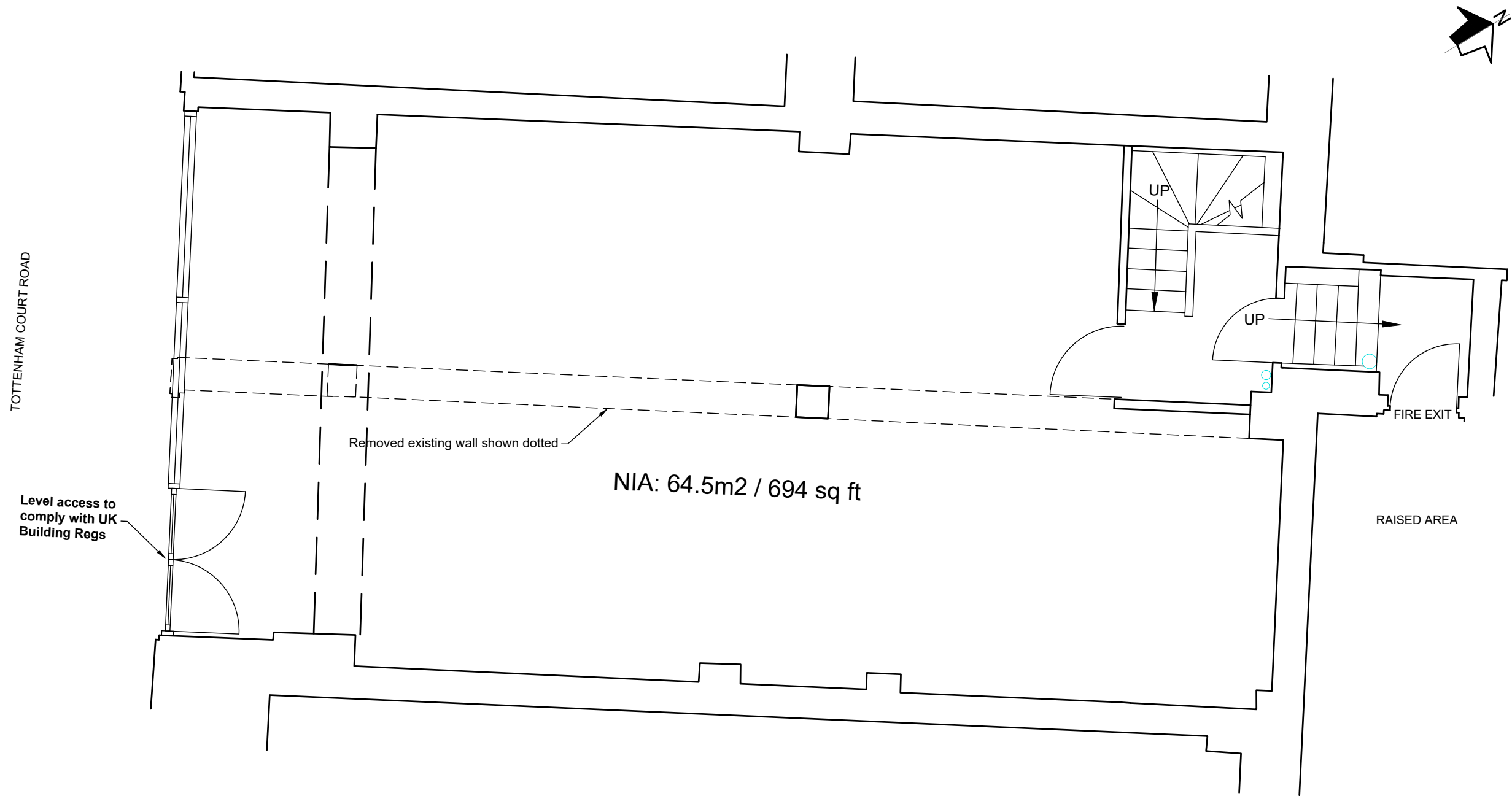


PLANNING

- NOTES
- DO NOT SCALE FROM THIS DRAWING.
  - ALL DIMENSIONS MUST BE CHECKED ON SITE.
  - ALL RIGHTS RESERVED, NO REPRODUCTION IN ANY MATERIAL FORM IS PERMITTED WITHOUT CONSENT.
  - THIS DRAWING IS COPYRIGHT OF CUMMING-GROUP



SCALE BAR 1:50

client  
CHESHIRE WEST AND CHESTER COUNCIL  
C/O PATRIZIA UK LTD

1 Fellmongers Path, Tower  
Bridge Road, London SE1 3LY  
Tel : 020 7029 3888.  
E: [info@cumming-group.com](mailto:info@cumming-group.com)  
[www.cumming-group.com](http://www.cumming-group.com)



title  
NEW COMBINED UNIT  
PROPOSED GROUND FLOOR PLAN

project  
154 - 162 TOTTENHAM COURT ROAD

P1	PLANNING ISSUE	21.04.23	AS
REV	DESCRIPTION	DATE	BY
drawing no. 1341-200-604		revision P1	checked SC
drawn AS	date 21-04-2023		

scales  
1:50 @ A3