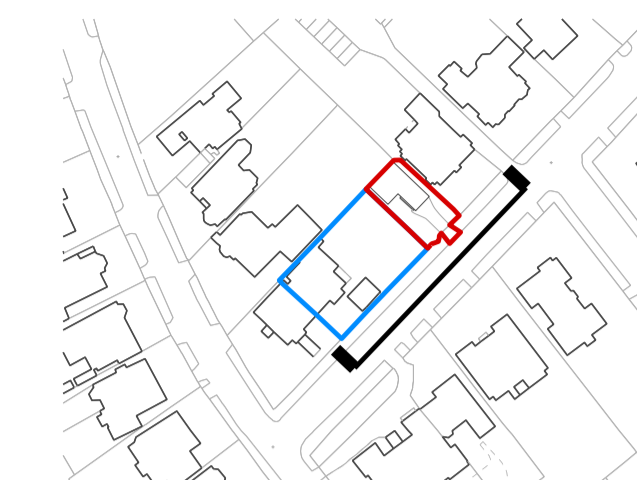
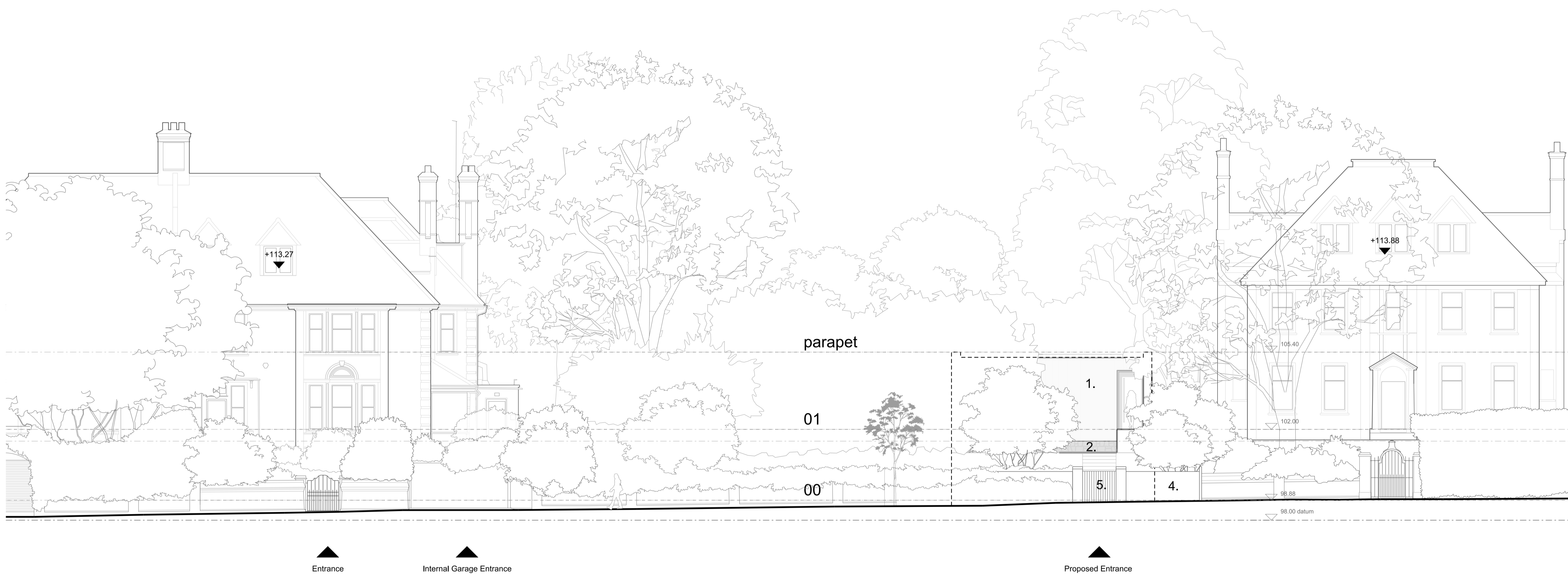


General Notes
 The drawing is copyright of Vabel LTD. All rights reserved. No reproduction in any material form is permitted without consent. Do not scale from this drawing. All dimensions are in mm unless stated otherwise. Dimensions, levels, sizes and location of particulars are to be verified by the contractor on site prior to engaging in works. This drawing may incorporate information from other professionals. Vabel LTD cannot accept responsibility for the integrity and accuracy of such information.



Materials

1. Matt black, textured timber cladding
2. Rough cut Limestone walling stone
3. Dark brown/bronze powder coated aluminium windows and doors
4. Brickwork wall and piers to match existing along the street
5. Black painted steel entrance gate
6. Dark brown/bronze textured powder coated aluminium entrance door with bronze handle
7. Dark brown textured powder coated roof capping
8. Wire fence with dense planting
9. Existing Timber fence retained/ reinstated
10. Existing red brickwork wall with blue brick base plinth



| Rev | Date | Reason for Issue | Chk |
|-----|----------|------------------|-----|
| P01 | 07/05/23 | Planning | NE |

← 1a Templewood Avenue | No. 1 Templewood Avenue | No. 3 Templewood Avenue →

1 South East Street Elevation
 04_100

VABEL
 LONDON

531 Highgate Studios, 53-79 Highgate Road, London NW5 1TL
 Tel +44 (0)20 7183 6405 Email contact@vabel.co.uk

Project
 1 Templewood Avenue

Title
 South East Street Elevation
 Proposed

| Date | Scale @ A1 | Drawn | Checked |
|----------|------------|-------|---------|
| 07/04/23 | 1:100 | BB | NE |

Status
 Planning

| Drawing Number | Revision |
|----------------|----------|
| 1705_PL_04_120 | P01 |