

# Drainjoint

## A Permeable Paving Solution





# Drainjoint

## A Permeable Paving Solution



Drainjoint permeable paving is easy to install and can be used with many different materials. Removing the need for pavers to carry nibs or extensions and avoiding the requirement for large, unsightly aggregate joints, the system preserves the beauty of the paving material.

Drainjoint allows for any material to be laid as a permeable paving system, be it natural stone, clay or concrete, and it can accommodate any paving size (not just those designed for a 6mm aggregate joint). The product is designed to be sustainable, cost-effective and easy to install.

No aggregate joints mean no continuous maintenance or rattling of blocks. No rattling reduces the potential for surface failure and eradicates the need for expensive rejointing.

Paving can be cleaned with a standard mechanical sweeper and, as Drainjoint is non-degradable and does not absorb water, there is no potential for freeze-thaw damage.

### Key Technical Features:

- Permeable infiltration joint
- Suitable for pedestrian and vehicular uses
- DEFRA compliant design service
- Paving can be laid to 'no falls'
- Does not require additional surface drainage
- Using graded bedding material to BS EN 12620 : 2002

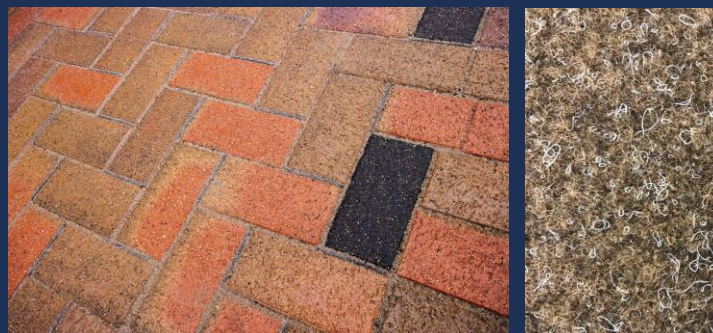
### Development:

DrainJoint was developed with the intention to create something which would:

- Be easy to implement
- Have little or no maintenance requirements
- Be a cost-effective solution

### Cost reduction:

- Capacity of sewers can be reduced when developing new residential areas
- Costs of construction
- Maintenance costs
- No special maintenance is needed
- Drainjoint can be used with all kinds of paving materials and sizes



### Traditional Permeable paving products:

- Only available in concrete or clay
- Only available in restricted sizes – 105mm x 210mm
- Frequent maintenance – replacement of aggregate in joints