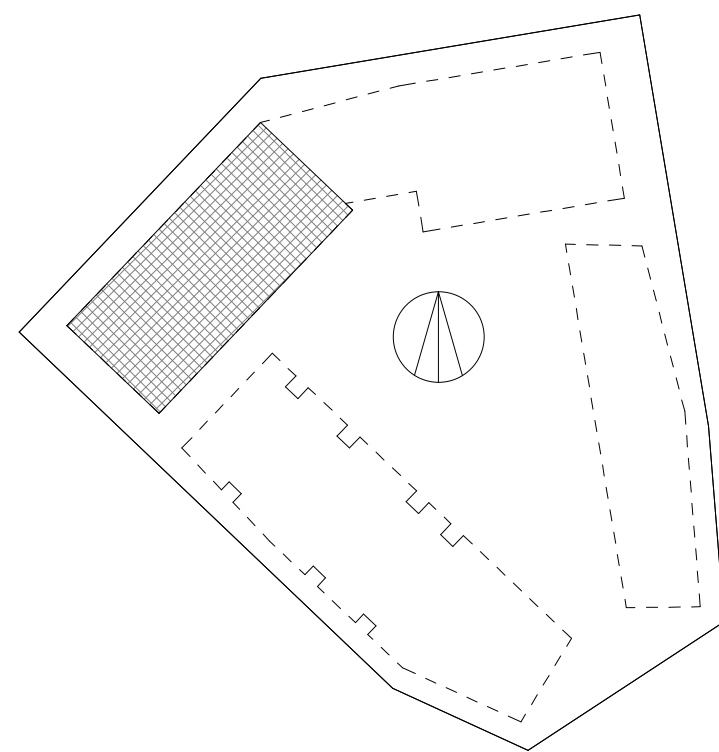


DO NOT SCALE DIMENSIONS OF THIS DRAWING.  
CHECK ALL DIMENSIONS ON SITE BEFORE FABRICATION.  
FINAL COORDINATION AND CHECKS ARE RESPONSIBILITY OF THE SITE TEAM  
TO SUIT CONDITIONS AND TOLERANCES BEFORE ANY INSTALLATION.  
REPORT ALL ERRORS OR OMISSIONS TO MIDGARD LIMITED.  
THIS DRAWING IS PROTECTED UNDER COPYRIGHT AND SHALL NOT BE  
REPRODUCED IN PART OR WHOLE WITHOUT PRIOR EXPRESSED  
PERMISSION OF MIDGARD LIMITED.

## KEY PLAN



## GENERAL NOTES

- THIS DRAWING SHOULD BE READ IN CONJUNCTION WITH FIRE CONSULTANTS REPORTS & SPECIFICATIONS
- EMERGENCY LIGHTING DESIGN TO MEET BS5266 REQUIREMENTS IN LINE WITH FIRE CONSULTANTS FIRE STRATEGY REPORT & M&E CONSULTANTS REPORTS & SPECIFICATIONS
- FIRE ALARMS, SOUNDERS, SMOKE & HEAT DETECTORS TO BE IN ACCORDANCE WITH FIRE & M&E CONSULTANTS REPORTS & SPECIFICATIONS
- CAVITY BARRIERS REQUIRED AROUND OPENINGS & COMPARTMENT LINE LOCATIONS
- SPRINKLERS WITHIN APARTMENTS TO BE DESIGNED & INSTALLED IN ACCORDANCE WITH SPRINKLER SUBCONTRACTORS DRAWINGS & SPECIFICATIONS

## MEANS OF DETECTION AND WARNING:

- LD1: All flats incorporate open-plan layouts, therefore a Grade D2 LD1 fire alarm and fire detection system in accordance with BS 5839-6:2019 is to be installed
- L2: An L2 detection and alarm system, in line with the recommendations of BS 5839-1:2017, is provided throughout W0.
- The retail unit alarm systems will be provided as part of the fit out for the units. An L2 detection and alarm system, in accordance with BS 5839-1:2017 should be provided in the retail units as a minimum.
- Due to the potential for sleeping occupants in the creche, it is recommended that an L2 detection and alarm system, in line with the recommendations of BS 5839-1:2017, is provided throughout W3.
- L5: The common corridors within the residential accommodations and communal areas at Ground Floor of W1 incorporate an L5 fire detection and alarm system in accordance with BS 5839-1:2017.

-Sounders to conform with BS 5839-1 requirements.

C04	AV	02.02.23	AM	UPDATES TO FIRE STRATEGY PLANS
C03	AV	31.01.23	AM	FIRE SIGNAGE LEGEND REVISED / FIRE SIGNS UPDATED / FIRE ESCAPE ROUTES UPDATED
C02	ID	05.01.23	AM	LAYOUT GENERALLY ADJUSTED / MDS COMMENTS APPLIED / DRAWING TITLE UPDATED AS PER PROTOCOL
C01	VS	16.11.21	AM	GENERAL NOTES UPDATED / MINOR AMENDMENTS
P01	BH	26.10.21	AM	FIRST ISSUE FOR STAGE 5 / GENERAL AMENDMENTS

REV	BY	DATE	CHK	DESCRIPTION
STATUS				

## FOR CONSTRUCTION

CONTRACTOR

Midgard Ltd

PROJECT

King's Cross Central Zone W

CLIENT

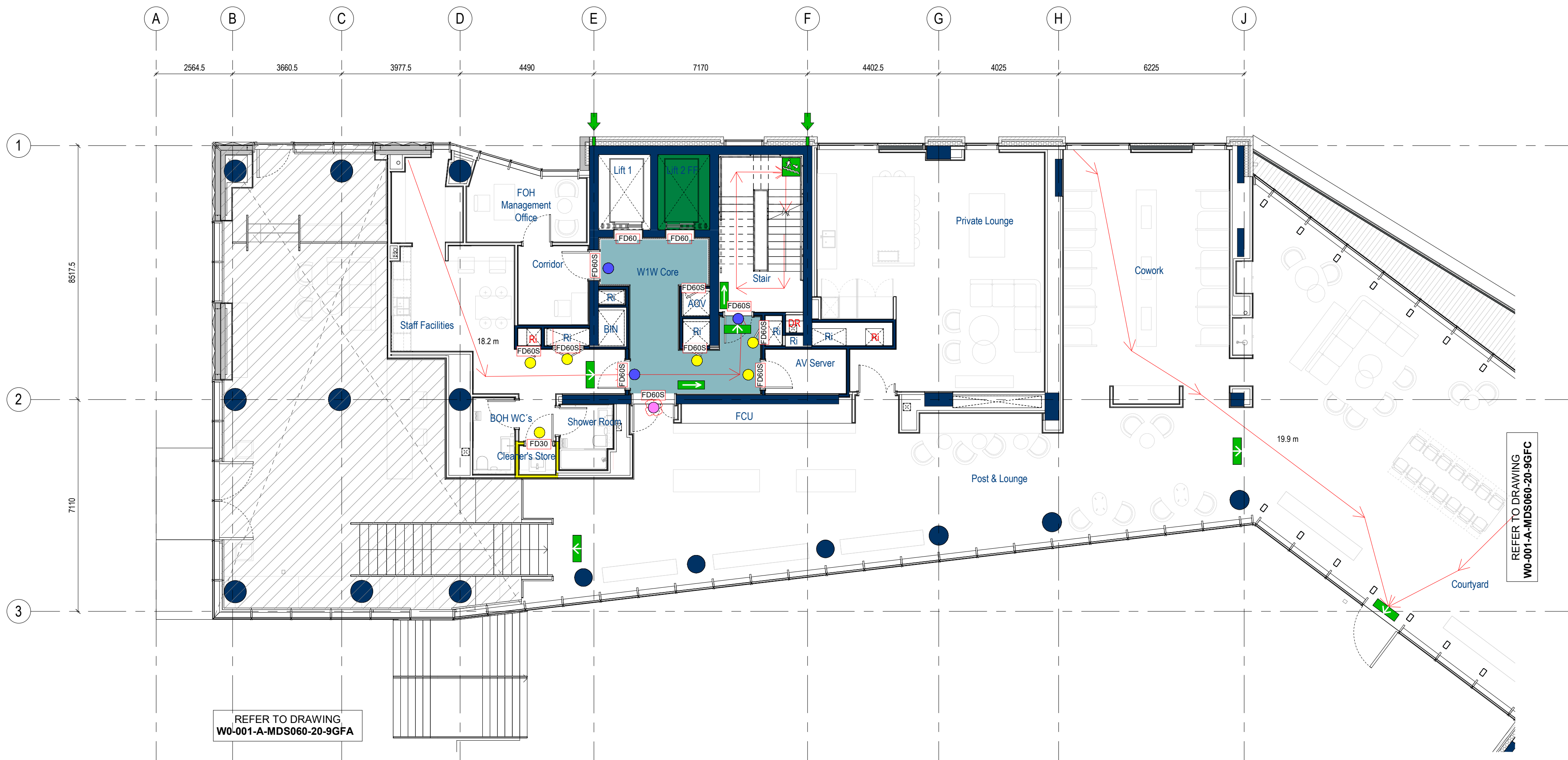
Argent LLP

DRAWING TITLE

Block W0 - Fire Strategy  
Ground Floor - Part B

DATE CREATED	DATE AMENDED	SCALE
10.03.20	02.02.23	1 : 100 @A1
DRAWN BY	AMENDED BY	CHECKED
VC	AV	AM

DRAWING NO & REVISION  
KXC-TRI-W0-001-A-MDS060-20-9GFB-C04



## LEGEND

	MEANS OF ESCAPE IN CASE OF FIRE- ESCAPE ROUTE (MOE)		EL	EVACUATION LIFT
	ESCAPE TRAVEL DISTANCE FLATS			INLET SHAFT
	30 MIN FIRE RESISTANT CONSTRUCTION			WET RISER
	60 MIN FIRE RESISTANT CONSTRUCTION			DRY RISER
	90 MIN FIRE RESISTANT CONSTRUCTION			LIFE SAFETY EQUIPMENT RISER
	120 MIN FIRE RESISTANT CONSTRUCTION			DRY RISER INLET / WET RISER INLET
	240 MIN FIRE RESISTANT CONSTRUCTION			AUTOMATIC OPENING VENT
	DENOTES VENTILATED LOBBY SERVED BY A MECHANICAL SMOKE VENTILATION SYSTEM			DOOR WITH 30min FIRE PROTECTION
	VENTILATED SPACE AS REQUIRED BY FIRE STRATEGY			DOOR WITH 60min FIRE PROTECTION
	UNVENTILATED LOBBY			SMOKE SEALED DOOR WITH 30min FIRE PROTECTION
	FIRE FIGHTING LIFT			SMOKE SEALED DOOR WITH 60min FIRE PROTECTION

## FIRE SIGNAGE

	MANDATORY SIGN (FIRE DOOR KEEP LOCKED SHUT), SIGNAGE TO MEET RECOMMENDATION OF BS5499-PART 5
	MANDATORY SIGN "BOTH SIDES" (FIRE DOOR KEEP SHUT), SIGNAGE TO MEET RECOMMENDATION OF BS5499-PART 5
	MANDATORY SIGN "BOTH SIDES" (AUTOMATIC FIRE DOOR KEEP CLEAR), SIGNAGE TO MEET RECOMMENDATION OF BS5499-PART 5
	SAFE CONDITION SIGN-GREEN (FIRE EXIT) WITH ARROW UP, SIGNAGE TO MEET RECOMMENDATION OF BS5499-PART 4. POWER ILLUMINATED
	SAFE CONDITION SIGN-GREEN (FIRE EXIT) WITH ARROW LEFT-RIGHT (DOUBLE SIDED SIGN), SIGNAGE TO MEET RECOMMENDATION OF BS5499-PART 4. POWER ILLUMINATED
	SAFE CONDITION SIGN-GREEN (FIRE EXIT) WITH MAN UP/DOWN AND ARROW LEFT-RIGHT (DOUBLE SIDED SIGN) SIGNAGE TO MEET RECOMMENDATION OF BS5499-PART4. PHOTO LUMINESCENT

## MEANS OF WARNING

	APARTMENT WITH OPEN-PLAN LAYOUT. APARTMENT PROVIDED WITH FIRE ALARM AND DETECTION SYSTEM IN ACCORDANCE WITH BS5839 PART 6
	DOOR(S) TO BE PROVIDED WITH POSITIVE SELF CLOSING DEVICE(S) AND SIGNS TO BOTH FACES WORDED "FIRE DOOR - KEEP SHUT" IN WHITE LETTERING ON BLUE BACKGROUND
	VISION PANEL OF CLEAR FIRE RESISTING GLAZING TO BE PROVIDED IN A FIRE RESISTING DOOR OR PARTITION. THE PERIOD OF FIRE RESISTANCE TO BE APPROPRIATE TO THE FIRE RESISTANCE OF THE DOOR/PARTITION IN WHICH IT IS FIXED.