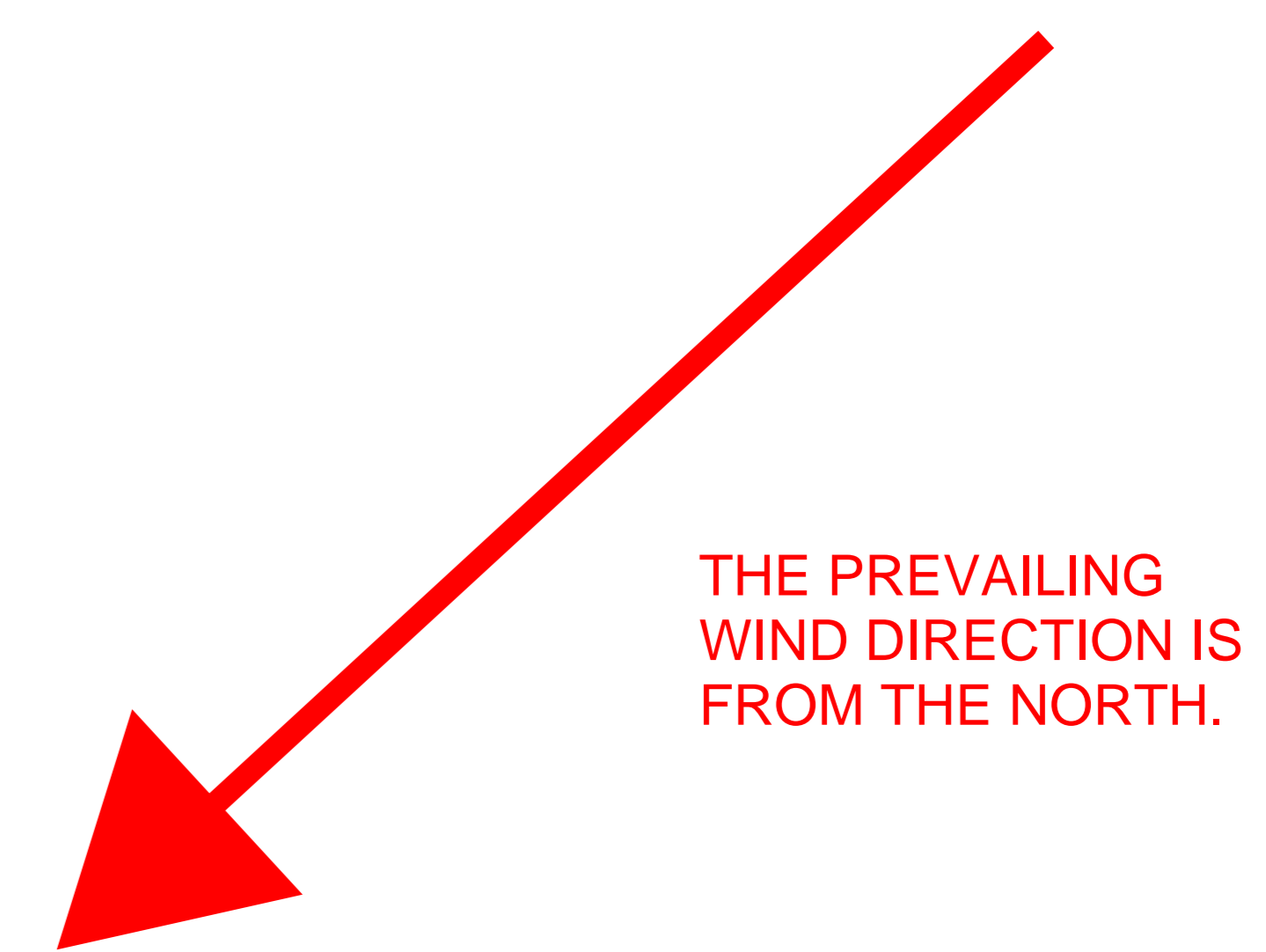
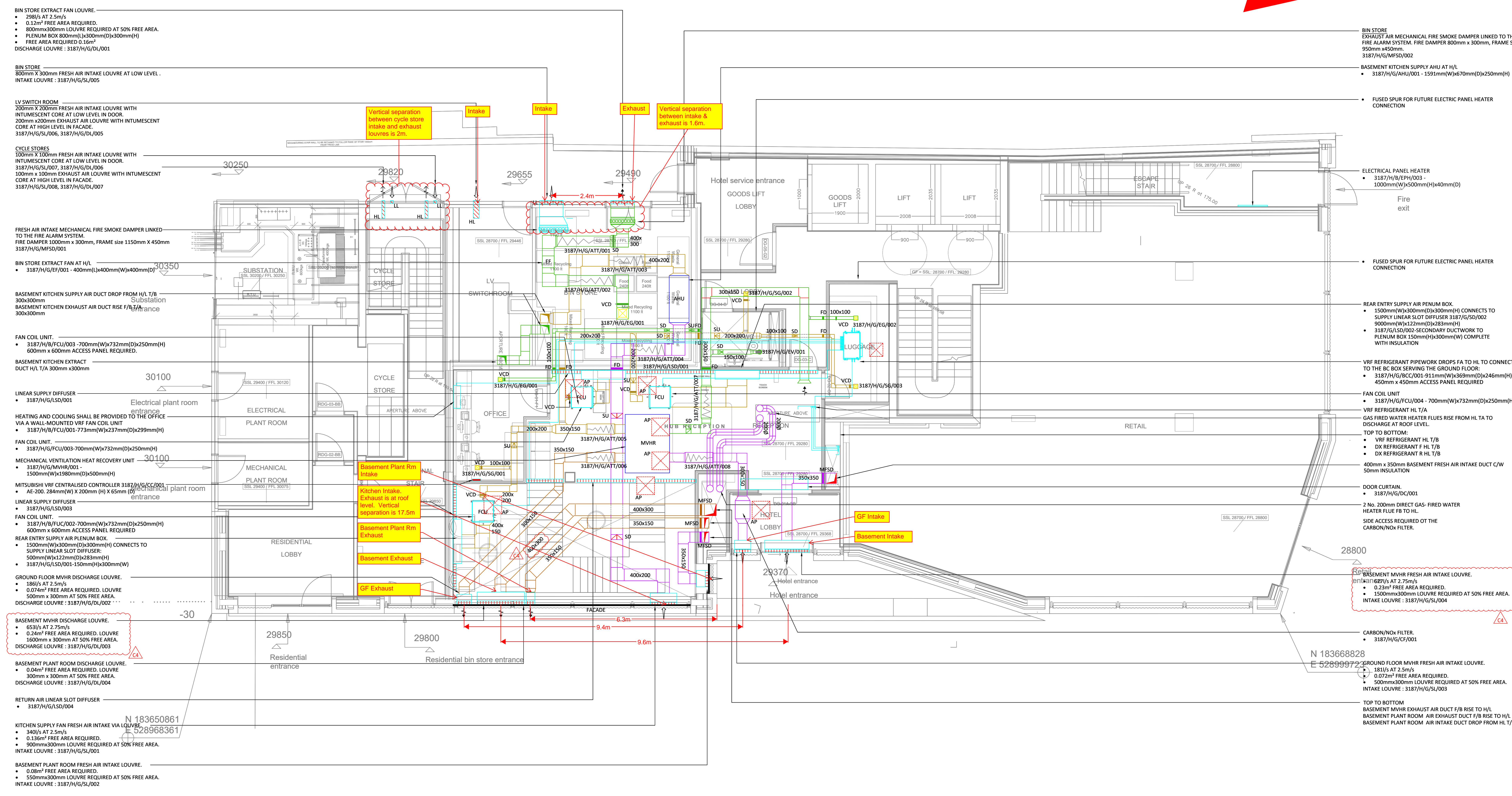


- NOTES:**
- THIS DRAWING MUST NOT BE USED FOR CONSTRUCTION OR INSTALLATION PURPOSES UNLESS EXPRESSLY STATED.
 - ALL INFORMATION AND LAYOUT ON THIS DRAWING IS SUBJECT TO SITE DIMENSION CHECKS. DO NOT SCALE FROM THIS DRAWING ALWAYS WORK TO NOTED DIMENSIONS.
 - ALL DIMENSIONS ARE IN MILLIMETERS UNLESS NOTED OTHERWISE.
 - ALL DIMENSIONS MUST BE VERIFIED ON SITE BEFORE COMPLETING SHOP DRAWINGS OR SETTING OUT THE WORKS.
 - THIS DRAWING IS TO BE READ IN CONJUNCTION WITH ALL RELEVANT ARCHITECTS, STRUCTURAL ENGINEERS, MEP CONSULTANT DRAWINGS AND SPECIFICATIONS.
 - ANY DISCREPANCIES BETWEEN DRAWINGS AND SPECIFICATION OR RELATED DOCUMENT, THE ENGINEER SHALL BE NOTIFIED IN WRITING FOR VERIFICATION OF DISCREPANCY.



THE PREVAILING WIND DIRECTION IS FROM THE NORTH.



- BIN STORE EXTRACT FAN LOUVRE.**
- 2981/5 AT 2.5m/s
 - 0.12m² FREE AREA REQUIRED.
 - 800mmx300mm LOUVRE REQUIRED AT 50% FREE AREA.
 - PLENUM BOX 800mm(L)x300mm(D)x300mm(H)
 - FREE AREA REQUIRED 0.16m²
 - DISCHARGE LOUVRE : 3187/H/G/DI/001
- BIN STORE**
- 800mm X 300mm FRESH AIR INTAKE LOUVRE AT LOW LEVEL .
INTAKE LOUVRE : 3187/H/G/SI/005
- LV SWITCH ROOM**
- 200mm X 200mm FRESH AIR INTAKE LOUVRE WITH INTUMESCENT CORE AT LOW LEVEL IN DOOR.
200mm x 200mm EXHAUST AIR LOUVRE WITH INTUMESCENT CORE AT HIGH LEVEL IN FACADE.
3187/H/G/SI/006, 3187/H/G/DI/005
- CYCLE STORES**
- 100mm X 100mm FRESH AIR INTAKE LOUVRE WITH INTUMESCENT CORE AT LOW LEVEL IN DOOR.
3187/H/G/SI/007, 3187/H/G/DI/006
100mm x 100mm EXHAUST AIR LOUVRE WITH INTUMESCENT CORE AT HIGH LEVEL IN FACADE.
3187/H/G/SI/008, 3187/H/G/DI/007
- FRESH AIR INTAKE MECHANICAL FIRE SMOKE DAMPER LINKED TO THE FIRE ALARM SYSTEM.**
- FIRE DAMPER 1000mm x 300mm, FRAME size 1150mm X 450mm
3187/H/G/MFS/001
- BIN STORE EXTRACT FAN AT H/L**
- 3187/H/G/EF/001 - 400mm(L)x400mm(W)x400mm(D)
- BASMENT KITCHEN SUPPLY AIR DUCT DROP FROM H/L T/B**
- 300x300mm
BASMENT KITCHEN EXHAUST AIR DUCT RISE F/A/B
300x300mm
- FAN COIL UNIT.**
- 3187/H/B/FCU/003 - 700mm(W)x732mm(D)x250mm(H)
600mm x 600mm ACCESS PANEL REQUIRED.
- BASMENT KITCHEN EXTRACT**
- DUCT H/L T/A 300mm x 300mm
- LINEAR SUPPLY DIFFUSER**
- 3187/H/G/LS/001
- HEATING AND COOLING SHALL BE PROVIDED TO THE OFFICE VIA A WALL-MOUNTED VRF FAN COIL UNIT**
- 3187/H/B/FCU/001-773mm(W)x237mm(D)x299mm(H)
- FAN COIL UNIT.**
- 3187/H/G/FCU/003-700mm(W)x732mm(D)x250mm(H)
- MECHANICAL VENTILATION HEAT RECOVERY UNIT**
- 3187/H/G/MVHR/001 - 1500mm(W)x1980mm(D)x500mm(H)
- MITSUBISHI VRF CENTRALISED CONTROLLER 3187/H/G/CC/001**
- AE-200 284mm(W) X 200mm (H) X 65mm (D)
- LINEAR SUPPLY DIFFUSER**
- 3187/H/G/LS/003
- FAN COIL UNIT.**
- 3187/H/B/FCU/002-700mm(W)x732mm(D)x250mm(H)
600mm x 600mm ACCESS PANEL REQUIRED
- REAR ENTRY SUPPLY AIR PLENUM BOX.**
- 1500mm(W)x300mm(D)x300mm(H) CONNECTS TO SUPPLY LINEAR SLOT DIFFUSER
 - 500mm(W)x122mm(D)x283mm(H)
 - 3187/H/G/LS/001-150mm(H)x300mm(W)
- GROUND FLOOR MVHR DISCHARGE LOUVRE.**
- 1861/5 AT 2.5m/s
 - 0.074m² FREE AREA REQUIRED. LOUVRE 500mm x 300mm AT 50% FREE AREA.
 - DISCHARGE LOUVRE : 3187/H/G/DI/003
- BASMENT MVHR DISCHARGE LOUVRE.**
- 6531/5 AT 2.75m/s
 - 0.24m² FREE AREA REQUIRED. LOUVRE 1600mm x 300mm AT 50% FREE AREA.
 - DISCHARGE LOUVRE : 3187/H/G/DI/003
- BASMENT PLANT ROOM DISCHARGE LOUVRE.**
- 0.04m² FREE AREA REQUIRED. LOUVRE 300mm x 300mm AT 50% FREE AREA.
 - DISCHARGE LOUVRE : 3187/H/G/DA/004
- RETURN AIR LINEAR SLOT DIFFUSER**
- 3187/H/G/LS/004
- KITCHEN SUPPLY FAN FRESH AIR INTAKE VIA LOUVRE**
- 3401/5 AT 2.5m/s
 - 0.136m² FREE AREA REQUIRED.
 - 900mmx300mm LOUVRE REQUIRED AT 50% FREE AREA.
 - INTAKE LOUVRE : 3187/H/G/SI/001
- BASMENT PLANT ROOM FRESH AIR INTAKE LOUVRE**
- 0.08m² FREE AREA REQUIRED.
 - 150mmx300mm LOUVRE REQUIRED AT 50% FREE AREA.
 - INTAKE LOUVRE : 3187/H/G/SI/002

- BIN STORE EXHAUST AIR MECHANICAL FIRE SMOKE DAMPER LINKED TO THE FIRE ALARM SYSTEM.**
- FIRE DAMPER 800mm x 300mm, FRAME SIZE 950mm x 450mm.
3187/H/G/MFS/002
- BASMENT KITCHEN SUPPLY AHU AT H/L**
- 3187/H/G/AHU/001 - 1591mm(W)x670mm(D)x250mm(H)
- FUSED SPUR FOR FUTURE ELECTRIC PANEL HEATER CONNECTION**
- ELECTRICAL PANEL HEATER**
- 3187/H/B/EPH/003 - 1000mm(W)x500mm(H)x40mm(D)
- Fire exit**
- FUSED SPUR FOR FUTURE ELECTRIC PANEL HEATER CONNECTION**
- REAR ENTRY SUPPLY AIR PLENUM BOX.**
- 1500mm(W)x300mm(D)x300mm(H) CONNECTS TO SUPPLY LINEAR SLOT DIFFUSER 3187/G/SD/002
 - 900mm(W)x122mm(D)x283mm(H)
 - 3187/G/LS/002-SECONDARY DUCTWORK TO PLENUM BOX 150mm(H)x300mm(W) COMPLETE WITH INSULATION
- VRF REFRIGERANT PIPEWORK DROPS FA TO HL TO CONNECT TO THE BC BOX SERVING THE GROUND FLOOR:**
- 3187/H/G/BCC/001-911mm(W)x369mm(D)x246mm(H)
 - 450mm x 450mm ACCESS PANEL REQUIRED
- FAN COIL UNIT**
- 3187/H/G/FCU/004 - 700mm(W)x732mm(D)x250mm(H)
- VRF REFRIGERANT HL T/A**
- GAS FIRED WATER HEATER FLUES RISE FROM HL TA TO DISCHARGE AT ROOF LEVEL.**
- TOP TO BOTTOM:**
- VRF REFRIGERANT HL T/B
 - DX REFRIGERANT H/L T/B
 - DX REFRIGERANT R HL T/B
- 400mm x 350mm BASMENT FRESH AIR INTAKE DUCT C/W 50mm INSULATION**
- DOOR CURTAIN.**
- 3187/H/G/DC/001
- 2 No. 200mm DIRECT GAS- FIRED WATER HEATER FLUE FB TO HL.**
- SIDE ACCESS REQUIRED OT THE CARBON/NOx FILTER.**
- BASMENT MVHR FRESH AIR INTAKE LOUVRE.**
- 1811/5 AT 2.75m/s
 - 0.23m² FREE AREA REQUIRED.
 - 1500mmx300mm LOUVRE REQUIRED AT 50% FREE AREA.
 - INTAKE LOUVRE : 3187/H/G/SI/004
- CARBON/NOx FILTER.**
- 3187/H/G/CF/001
- GROUND FLOOR MVHR FRESH AIR INTAKE LOUVRE.**
- 1811/5 AT 2.5m/s
 - 0.072m² FREE AREA REQUIRED.
 - 500mmx300mm LOUVRE REQUIRED AT 50% FREE AREA.
 - INTAKE LOUVRE : 3187/H/G/SI/003
- TOP TO BOTTOM**
- BASMENT MVHR EXHAUST AIR DUCT F/B RISE TO H/L**
- BASMENT PLANT ROOM AIR EXHAUST DUCT F/B RISE TO H/L**
- BASMENT PLANT ROOM AIR INTAKE DUCT DROP FROM HL T/B**

Revision	Description	Date
C4	CCF003 & CCF004	09.04.21
C3	REVISED FOR CONTRACT ISSUE	23.12.20
C2	DRAWING REVISED TO SUIT THE ARCHITECTS LAYOUT	20.11.20
C1	CONTRACT ISSUE	31.07.20
T3	STAGE 4 COORDINATION WITH REVISED DRAINAGE	01:04:20
T2	STAGE 4 TENDER ISSUE	22.11.19
T1	STAGE 4 TENDER ISSUE	25.10.19
P1	PRELIMINARY ISSUE	28.08.19

CONTRACT

PSH. www.pshconsulting.co.uk

London Office
4th Floor, Alto Tower,
90 Stamford Street,
London, SE1 9LQ
T: 0203 029 3840
E: info@pshconsulting.co.uk

Wokingham Office
6 Alexandra Court,
Wokingham
Berkshire, RG40 2SL
T: 0148 977 4747
E: info@pshconsulting.co.uk

Architect:
MORRIS + COMPANY

Client:
DEMAR HOLDINGS

Project:
115 - 119 CAMDEN HIGH STREET

Title:
GROUND MECHANICAL SERVICES DUCTWORK LAYOUT

Drawn	Chkd/Appd	Date
JTC	MB	21.08.19
Drawn File:	3187-PSH-H-00-DR-M-7001 DWG	Scale: 1:50@A0
Drawn Number:	3187-PSH-H-00-DR-M-7001	Rev: C4

DELANCEY STREET

