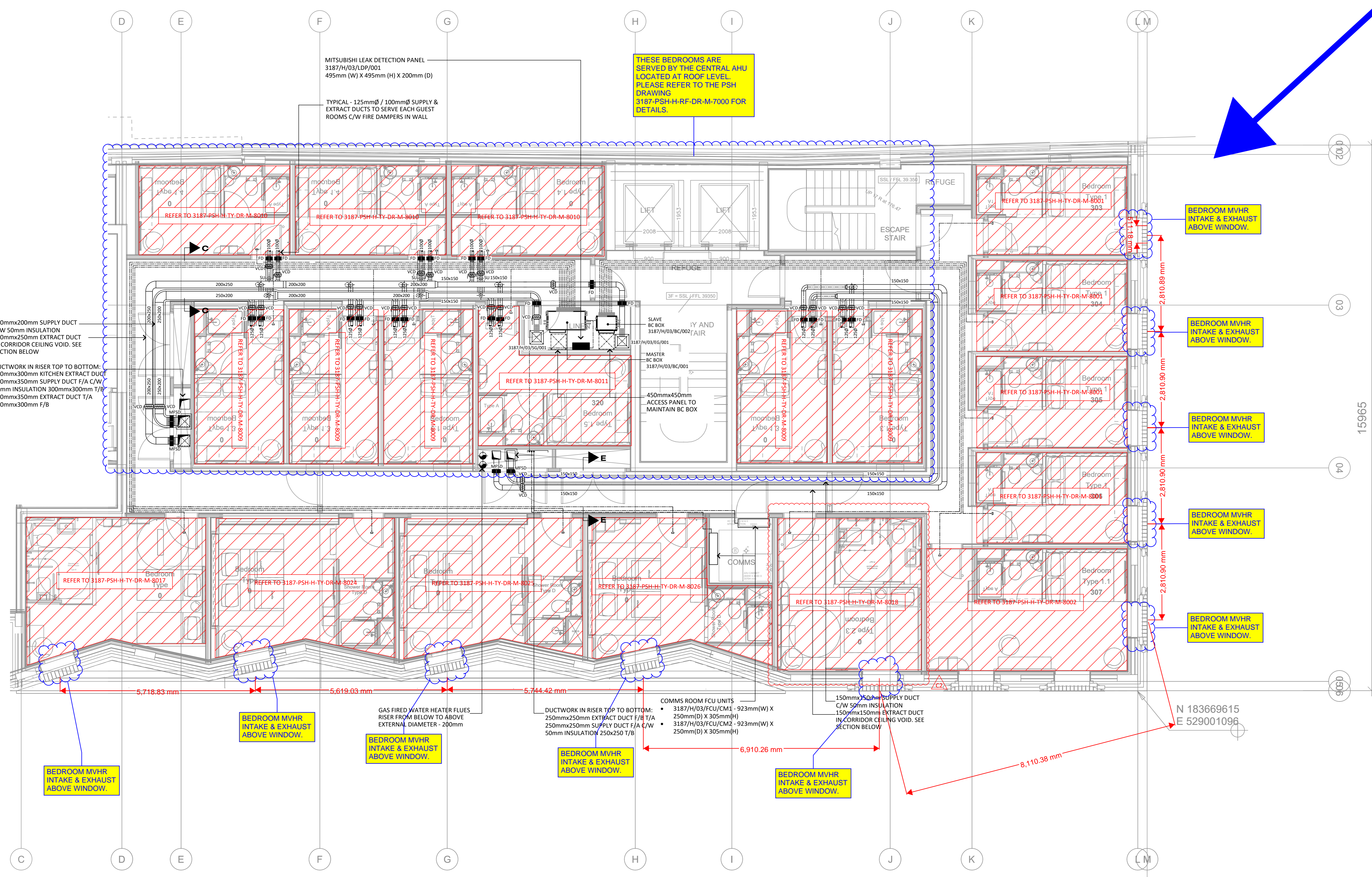
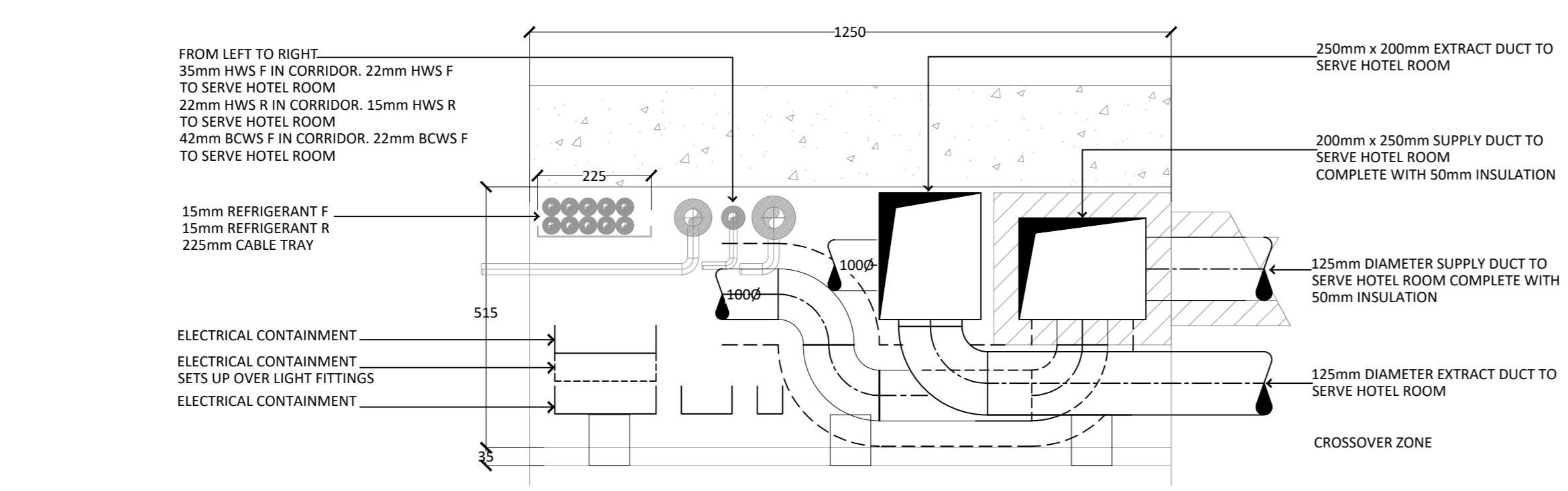


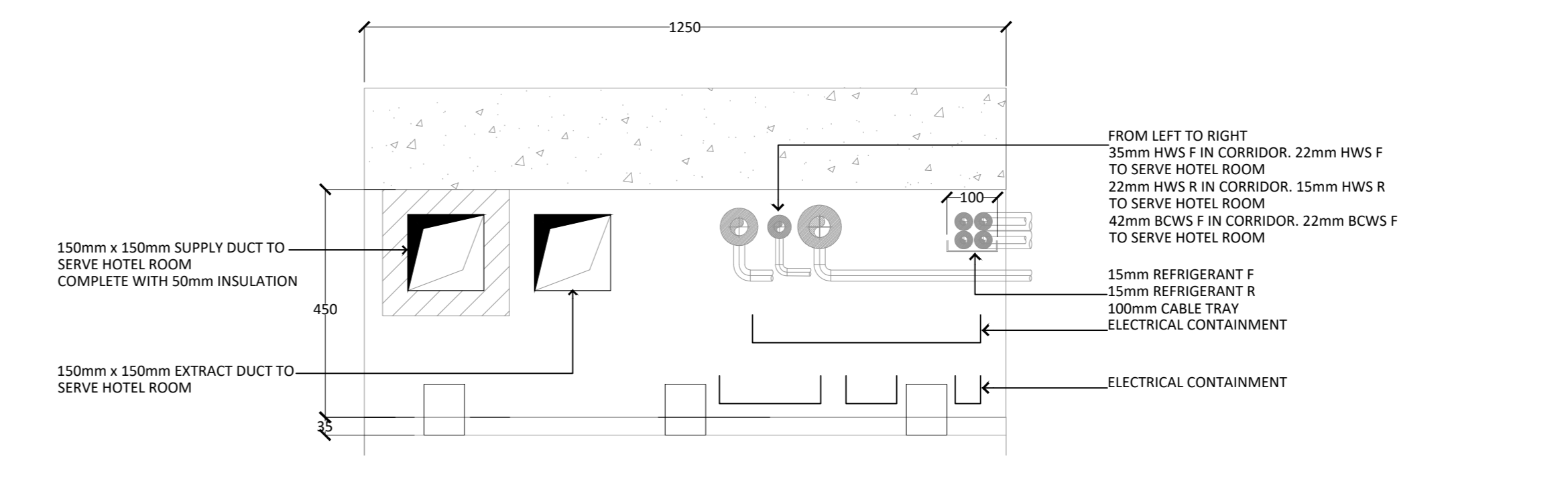
- NOTES:
- THIS DRAWING MUST NOT BE USED FOR CONSTRUCTION OR INSTALLATION PURPOSES UNLESS EXPRESSLY STATED.
 - ALL INFORMATION AND LAYOUT ON THIS DRAWING IS SUBJECT TO SITE DIMENSION CHECKS. DO NOT SCALE FROM THIS DRAWING ALWAYS WORK TO NOTED DIMENSIONS.
 - ALL DIMENSIONS ARE IN MILLIMETERS UNLESS NOTED OTHERWISE.
 - ALL DIMENSIONS MUST BE VERIFIED ON SITE BEFORE COMPLETING SHOP DRAWINGS OR SETTING OUT THE WORKS.
 - THIS DRAWING IS TO BE READ IN CONJUNCTION WITH ALL RELEVANT ARCHITECTS, STRUCTURAL ENGINEERS, MEP CONSULTANT DRAWINGS AND SPECIFICATIONS.
 - ANY DISCREPANCIES BETWEEN DRAWINGS AND SPECIFICATION OR RELATED DOCUMENT, THE ENGINEER SHALL BE NOTIFIED IN WRITING FOR VERIFICATION OF DISCREPANCY.
 - ALL SERVICES PENETRATIONS THROUGH FIRE RATED PARTITIONS SHALL BE SLEEVED AND FIRE STOPPED.
 - ALL DUCTWORK SHALL BE FIRE RATED FOR STABILITY AND INTEGRITY.
 - REFRIGERANT PIPEWORK SHALL DISTRIBUTE WITHIN CORRIDOR CEILING VOIDS ON GALVANIZED STEEL CABLE TRAY.



THE PREVAILING WIND DIRECTION IS FROM THE NORTH.



SECTION C-C (1:10)



SECTION E-E (1:10)

Revision	Description	Date
C2	DRAWING REVISED TO SUIT THE ARCHITECTS LAYOUT	20.11.20
C1	CONTRACT ISSUE	31.07.20
T2	STAGE 4 TENDER ISSUE	22.11.19
T1	STAGE 4 TENDER ISSUE	25.10.19
P1	STAGE 3 - PRELIMINARY ISSUE	16.08.19

Drawing Status

CONTRACT

PSH. www.pshconsulting.co.uk

London Office
4th Floor, Alto Tower,
30 Stamford Street,
London, SE1 9LQ
T: 0203 029 3840
E: info@pshconsulting.co.uk

Wokingham Office
6 Alexandra Court,
Wokingham,
Berkshire, RG40 2SL
T: 0118 977 4747
E: info@pshconsulting.co.uk

Architect:
MORRIS + COMPANY

Client:
DEMAR HOLDINGS

Project:
115 - 119 CAMDEN HIGH STREET

Title:
THIRD FLOOR MECHANICAL SERVICES DUCTWORK LAYOUT

Drawn:	Chkd/Appd:	Date:
CDL	MB	21.04.19
File:	3187-PSH-H-03-DR-M-7009 DWG	Scale:
Drawing Number:	3187-PSH-H-03-DR-M-7009	Rev:
		C2

