

St Pancras Commercial Centre
Planning Condition Discharge Report, Conditions 06 and 07
Accessible Dwellings – Part II
May 2023



St Pancras Commercial Centre
Planning Condition Discharge Report, Conditions 06 and 07
Accessible Dwellings – Part II
May 2023

Document Control

Revision A 13.04.2023

Revision B 26.04.2023

Revision C 09.05.2023

2.0 Market Apartment Building

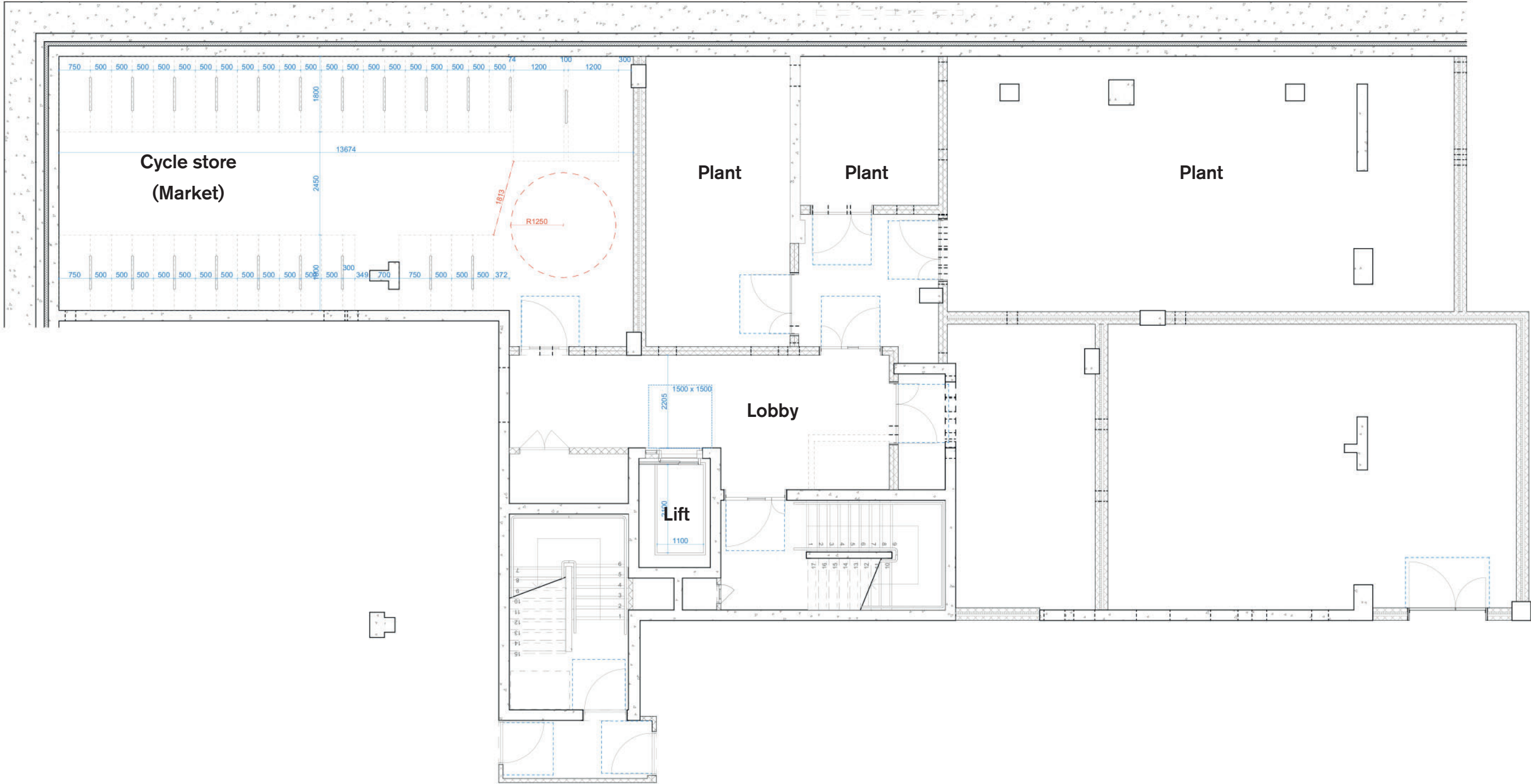
2.1 Introduction

The approach to meeting the requirements of part M of the building regulations is described in Part I of the report. This report contains drawings of the proposed Market apartment building.

2.2 Apartment types

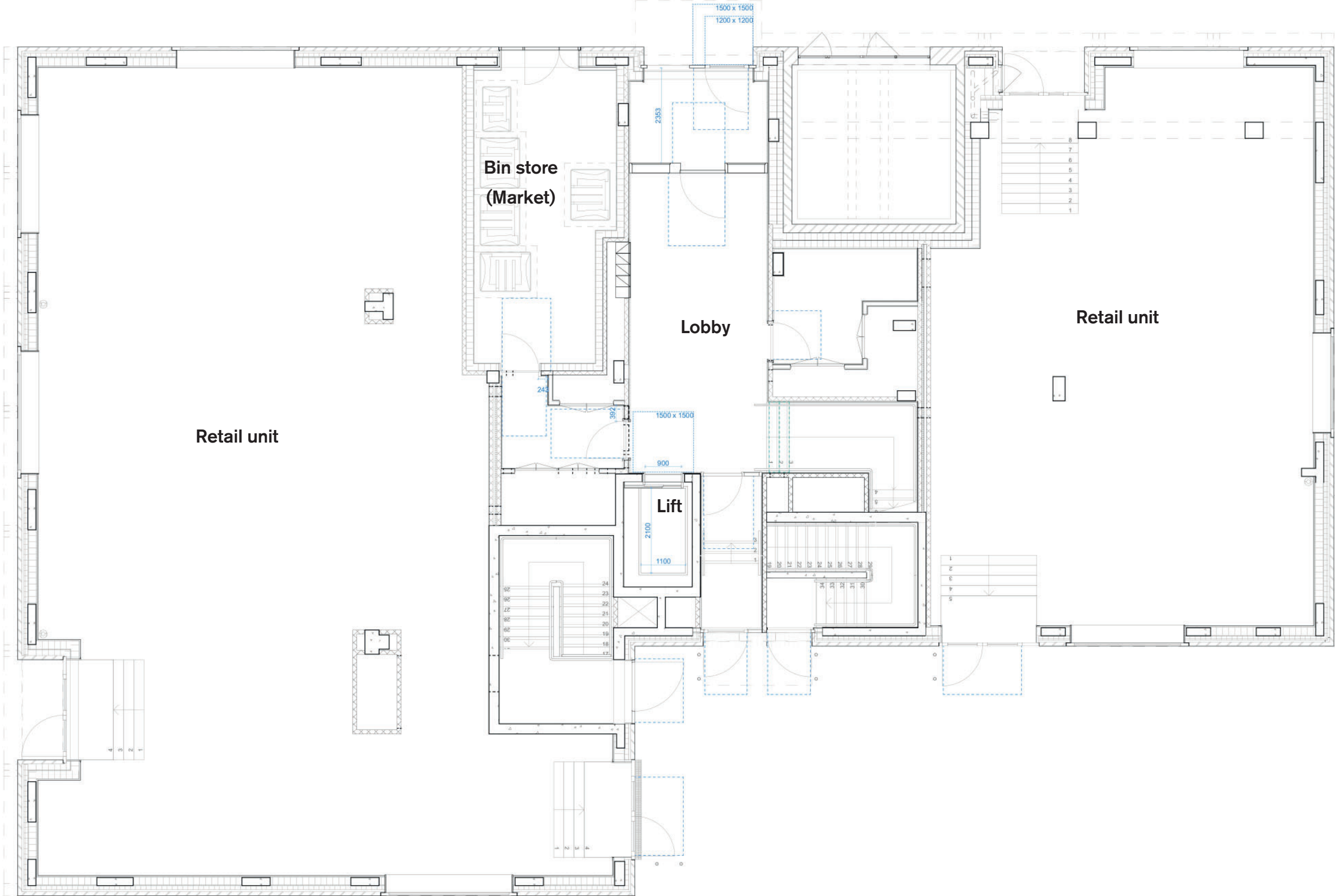
The following apartment types are described in the drawings that follow:

Market	Type	Apartments
Standard	Type	Apartments
M4(2)	MA	M_01_01, M_02_01, M_03_01, M_04_01
M4(3)	MB	M_01_02
M4(2)	MC	M_02_02, M_03_02
M4(2)	MD	M_01_03, M_02_03, M_03_03
M4(2)	ME	M_01_04, M_02_04, M_03_04, M_04_03
M4(2)	MF	M_01_05, M_02_05, M_03_05, M_04_04
M4(2)	MG	M_04_02

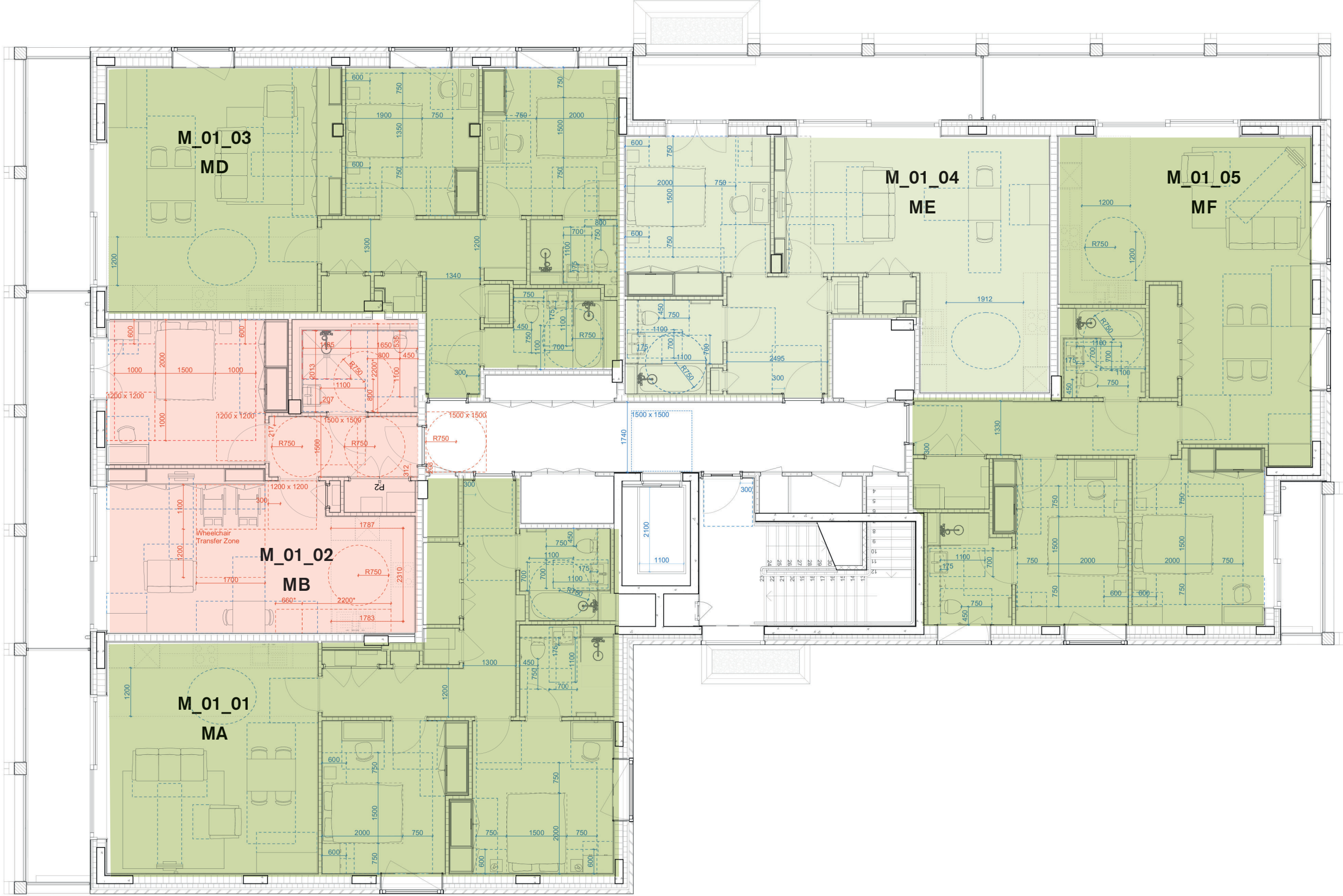


Market building basement plan

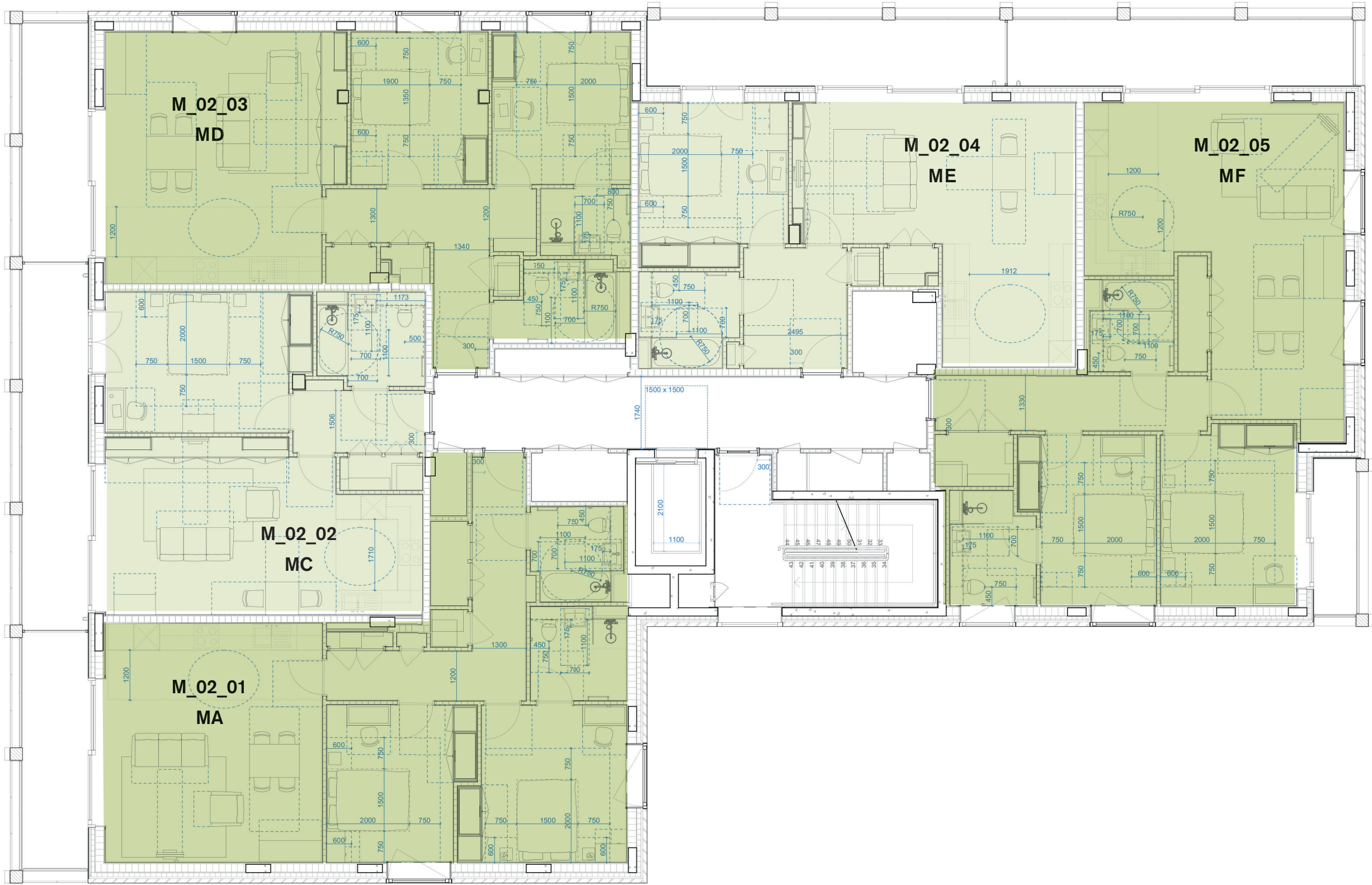
0m 1m 2m 3m 4m 5m



Market building ground floor plan



Market building first floor plan



Market building second floor plan