



NEW RED VINYL TRANSFER ON UPPER WINDOWS

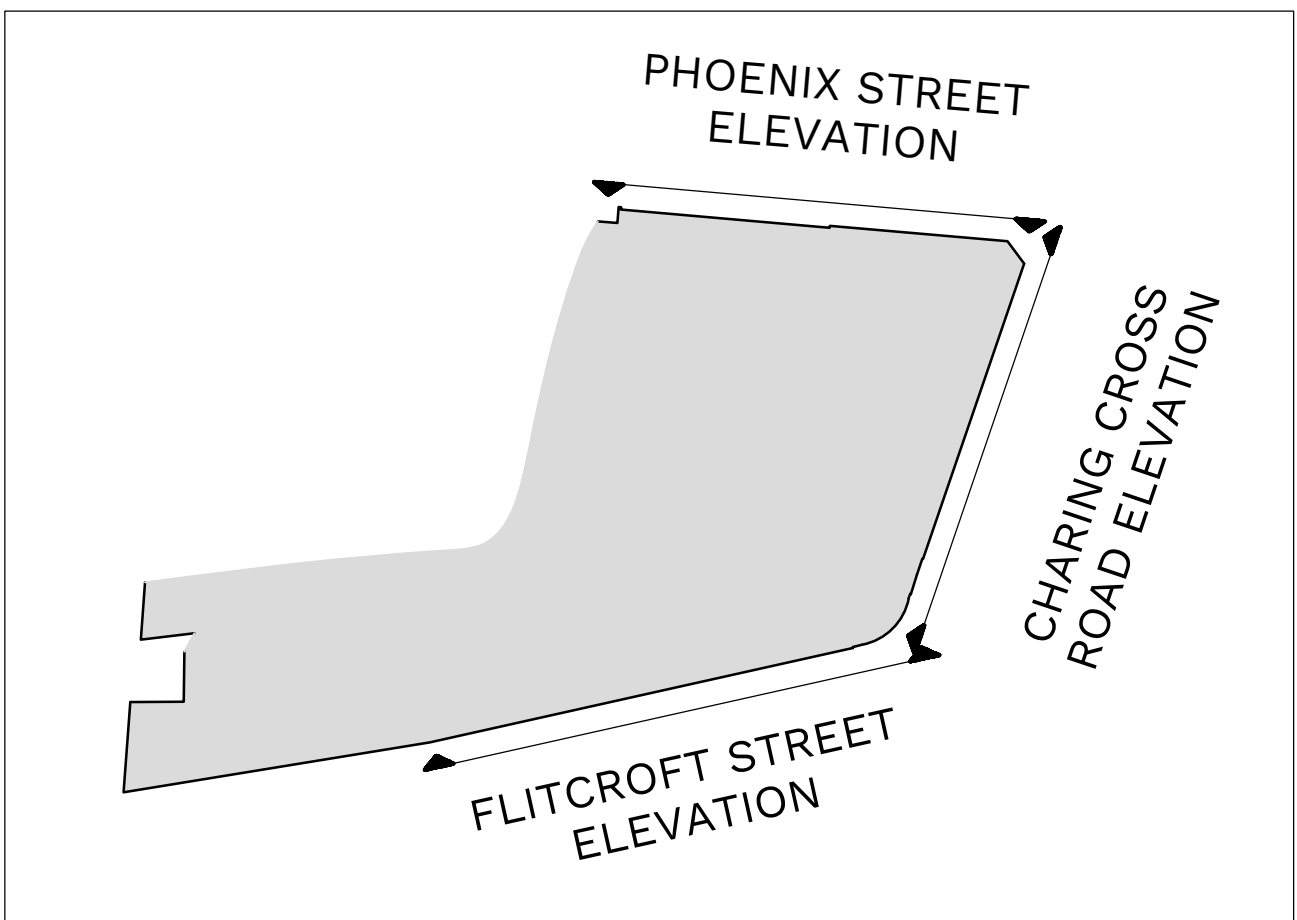
EXISTING BANNER BOXES WITH NEW SHOW RELATED ADVERTISEMENT 3D FIGURES WITH HALO LIGHT BEHIND

NEW NEON LETTERING TO EXISTING PROJECTING SIGN (ON THIS SIDE ONLY) WITH NEW SHOW RELATED ADVERTISEMENT

NEW 3D BUILT ILLUMINATED LETTER LIGHT BOXES SUPPORTED ON BLACK PAINTED BACKING BOARD SCREWED TO EXISTING HORIZONTAL ALUMINIUM BARS WITH NEW SHOW RELATED ADVERTISEMENT

EXISTING POSTER BOXES WITH NEW SHOW RELATED ADVERTISEMENT

PROPOSED FLITCROFT STREET ELEVATION
(SCALE 1:50 AT A1)




DO NOT SCALE THIS DRAWING.

Original Drawing Size A1

Notes

Rev.	Date	Description	By
---	---	---	---



CHARTERED STRUCTURAL ENGINEERS

Issuing Office
204 Bolton Road, Walkden
Manchester, M28 3BN
TEL: 0161 790 4404

Client
NEWMAN DISPLAYS LTD.

Project
PHOENIX THEATRE,
LONDON- STRANGER
THINGS SIGNAGE

Drawing Title
PROPOSED FLITCROFT
STREET ELEVATION

Scale	Date	Drawn	Checked	Passed
AS SHOWN	MAY 2023	GT	---	---

Drawing No.
3622-005

PLANNING