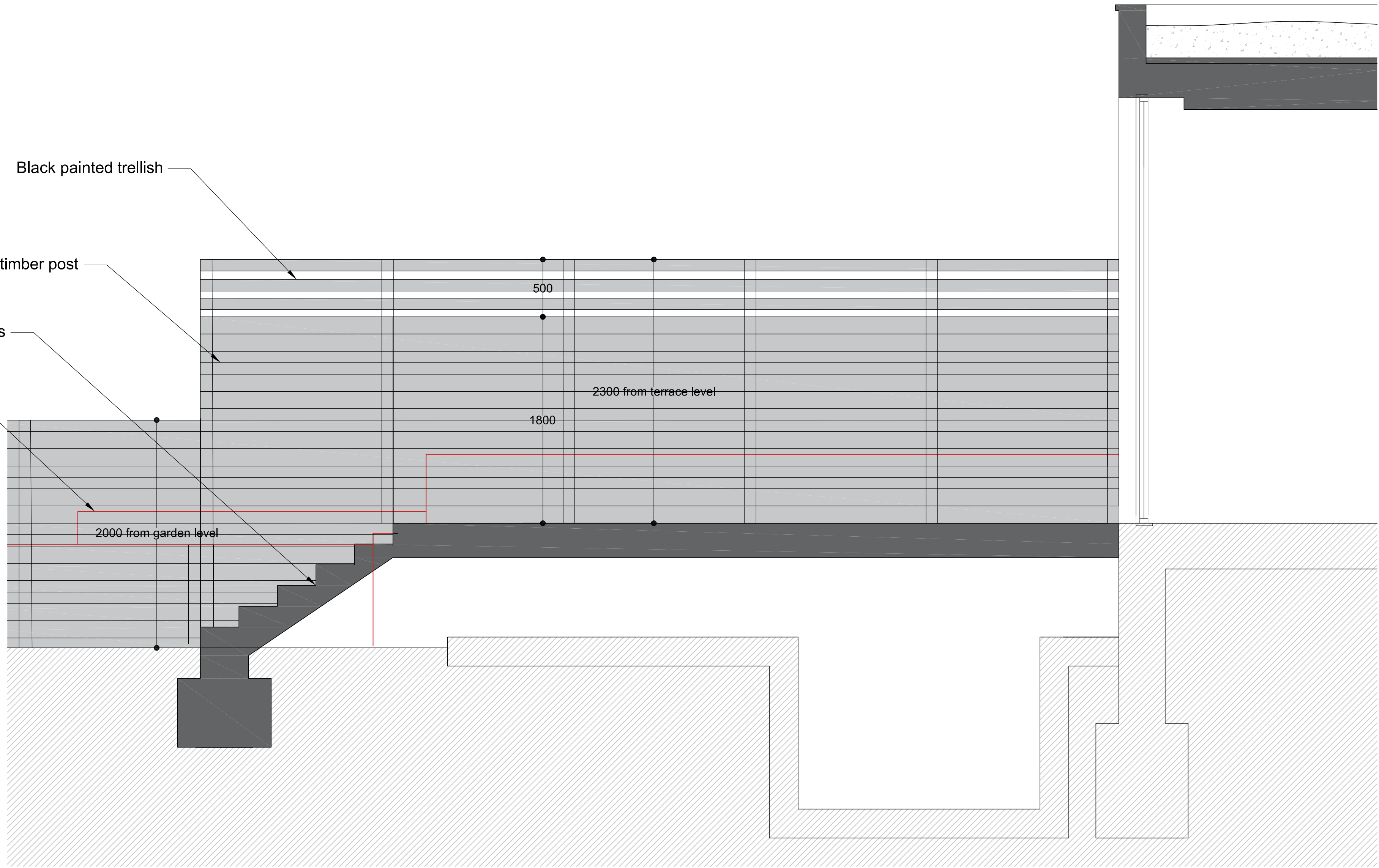


Black painted trellish

Black painted timber screen alternating 6" and 2" slats in pairs fixed to timber post

Steps for garden access

Existing brick boundary wall to be retained



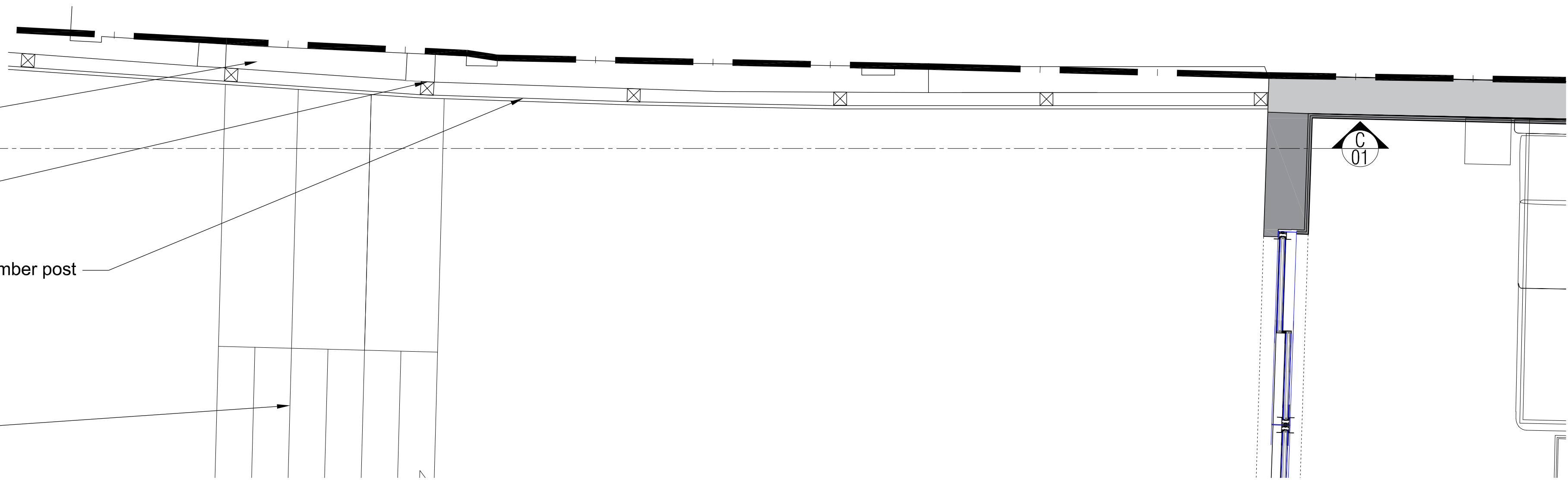
Section CC
01

Existing brick boundary wall to be retained

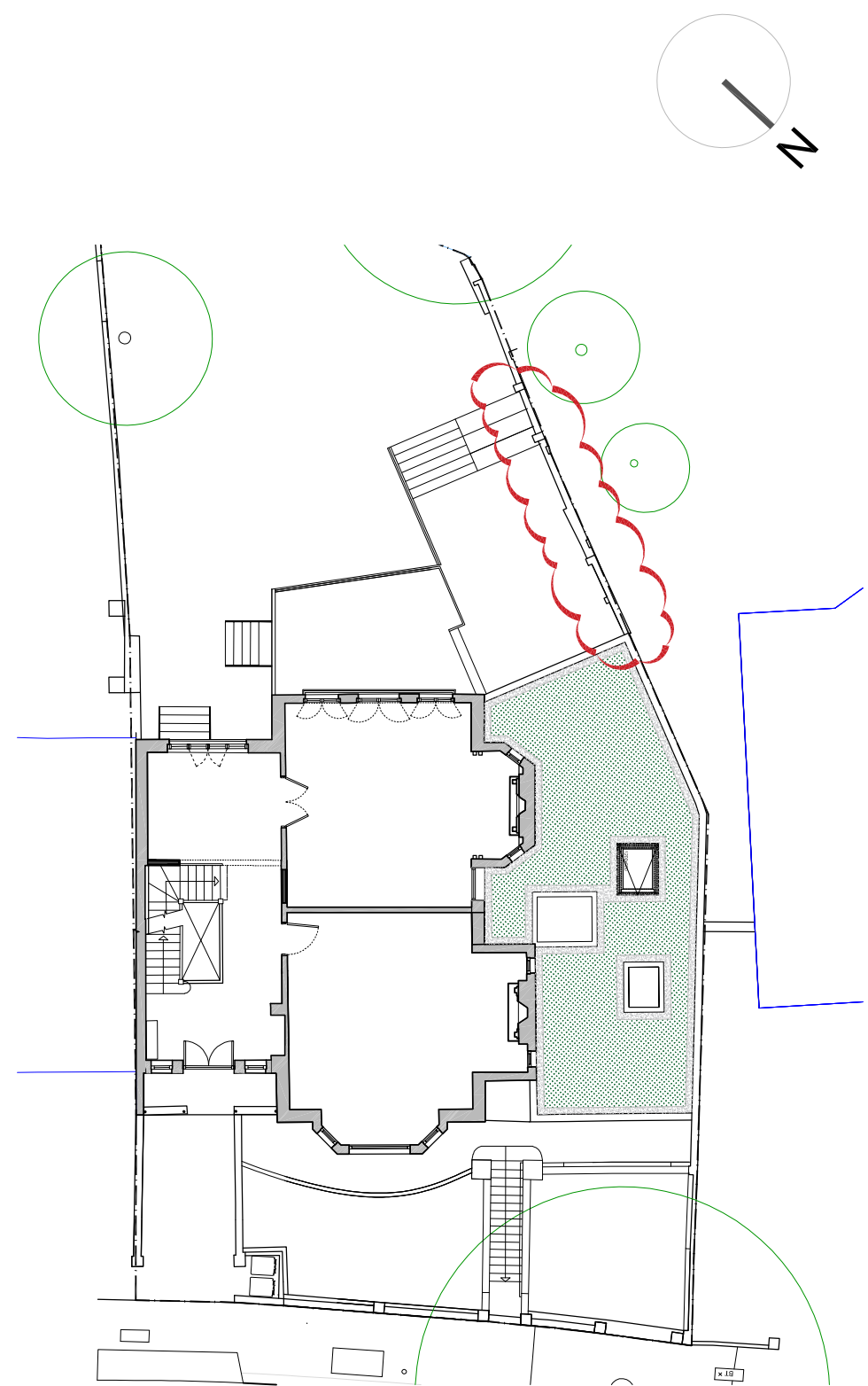
Timber fence post

Black painted timber screen alternating 6" and 2" slats in pairs fixed to timber post

Steps for garden access



Plan
02



KEY PLAN
00

NOTES			
• Dimensions govern.			
• All dimensions are given in millimetres (mm) unless otherwise noted.			
• All dimensions shall be verified on site before proceeding with the work contractor before construction and fabrication commences.			
• Workmanship and materials to be accordance with the relevant current British Standard Codes of Practice and the Local Authorities requirements.			
• During construction the contractor shall be responsible for maintaining the structure in a stable condition.			
• These drawings are to be read in conjunction with all other contract documentation and other consultants documentation.			
• If in doubt, ask!			

PL	17-05-2023	For planning	JG
Rev	Date	Reason for Issue	ch'd

ambigram architects

Studio 2.04, 60 Gray's Inn Road
London WC1X 8AQ

© Copyright 2021

www.ambigramarchitects.com

info@ambigramarchitects.com

ambigram architects ltd

31 Redington Rd

31 Redington Road
London NW3 7QY

Project

Proposed Screen detail - Condition 6

Title

aa_2120	JP	PL-
Job number	Drawn	Revision
June 2021		
Date	1:50_@A1	
AA-A2120_S_P-3002	1:100_@A3	
Drawing no	Scale	