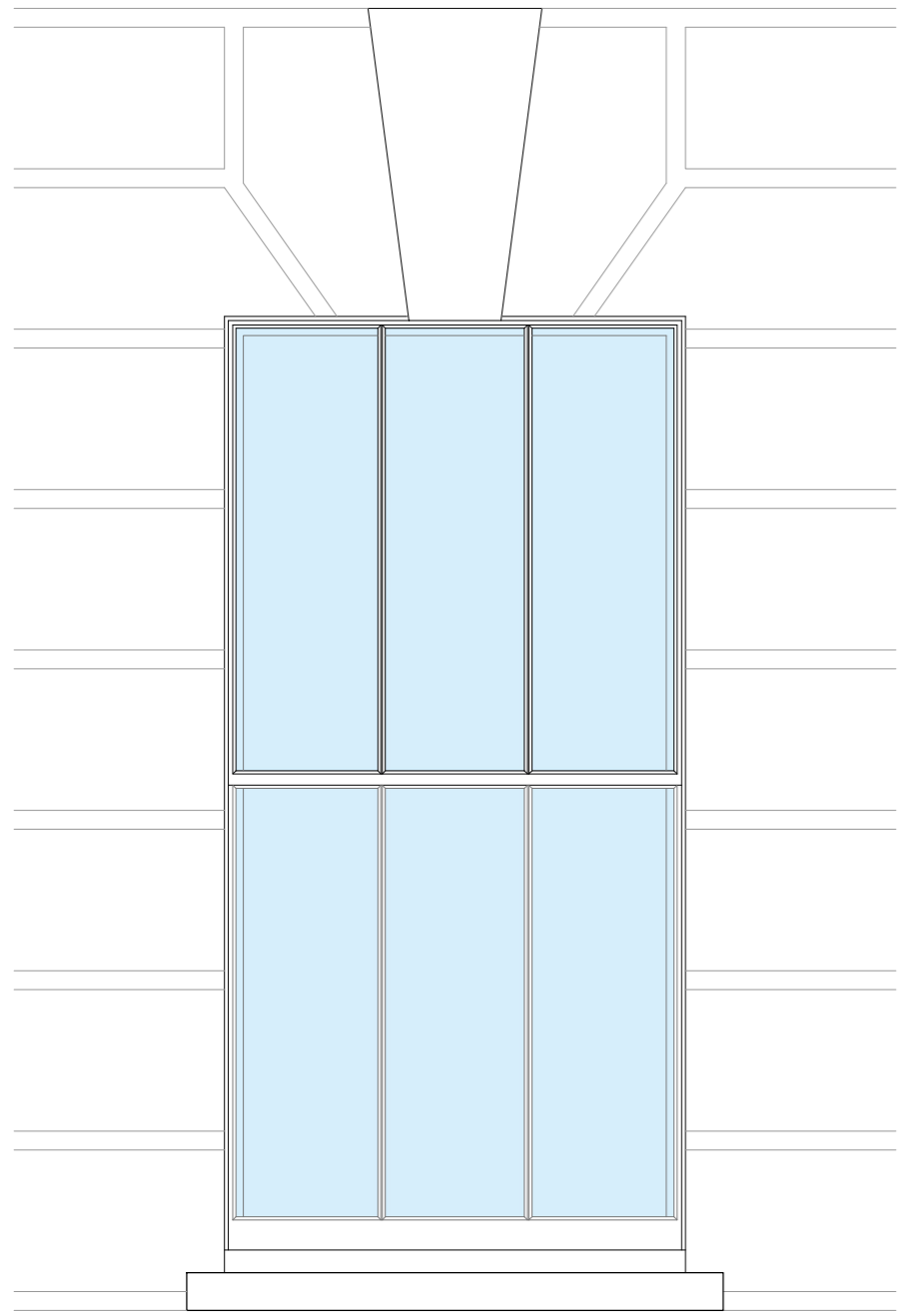
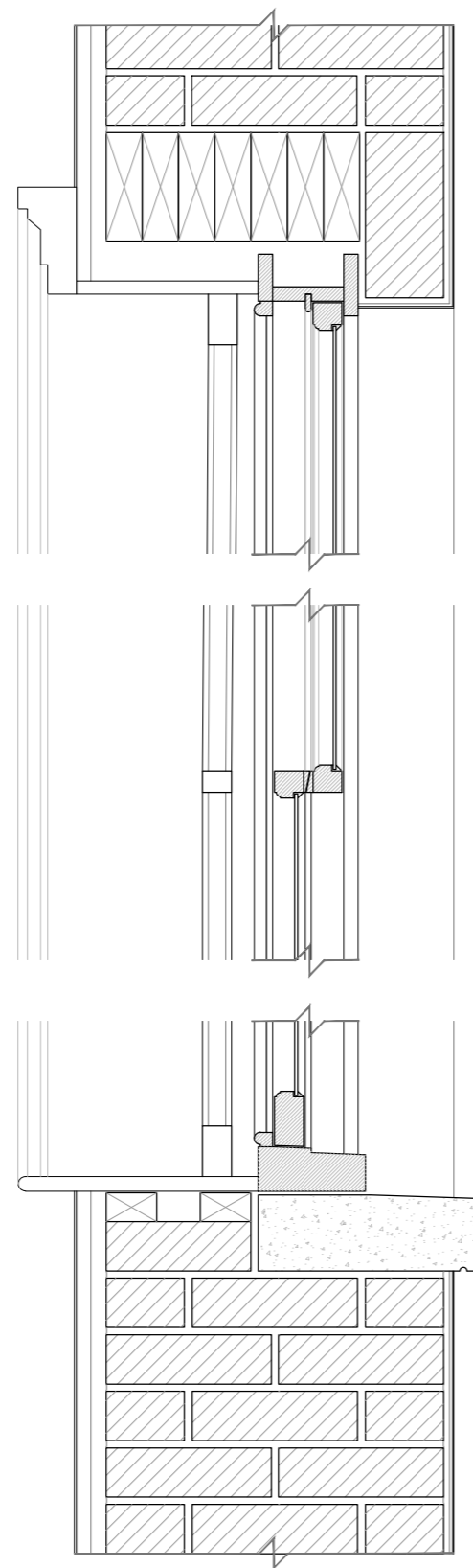


See A32003 for location of proposed secondary glazing system

Typical existing window - ground, second & third floors

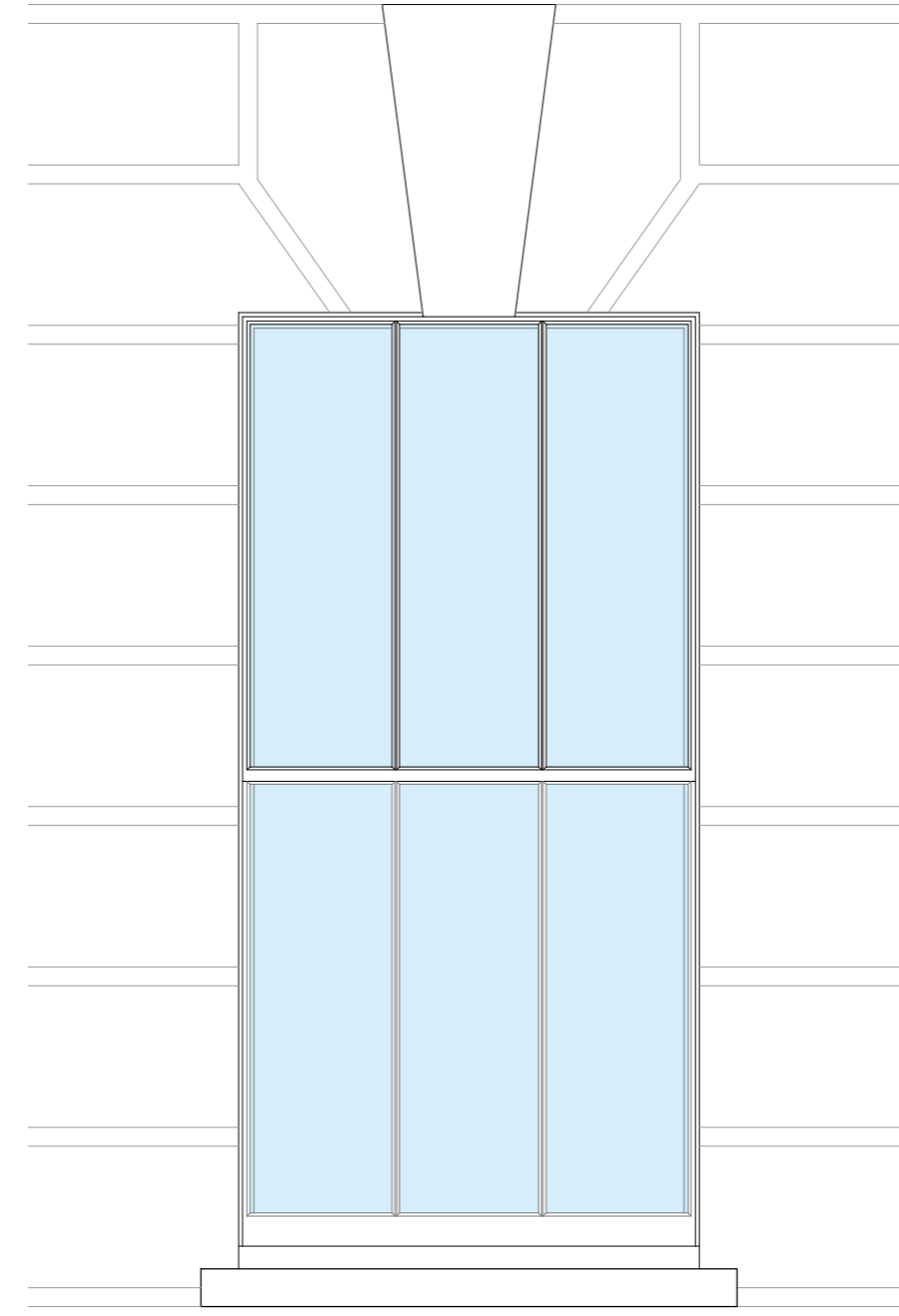


Typical Elevation
1:20

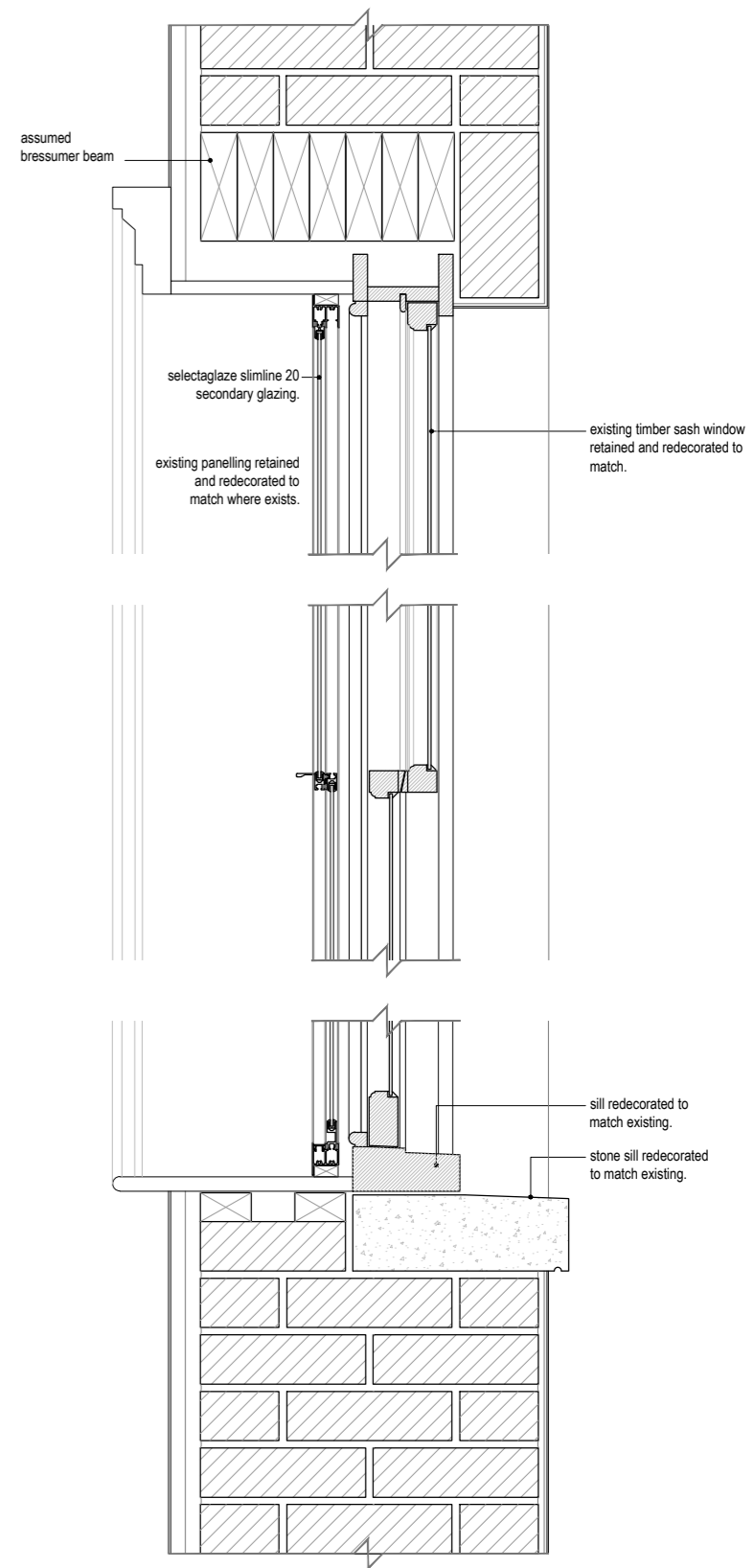


Typical Section
1:10

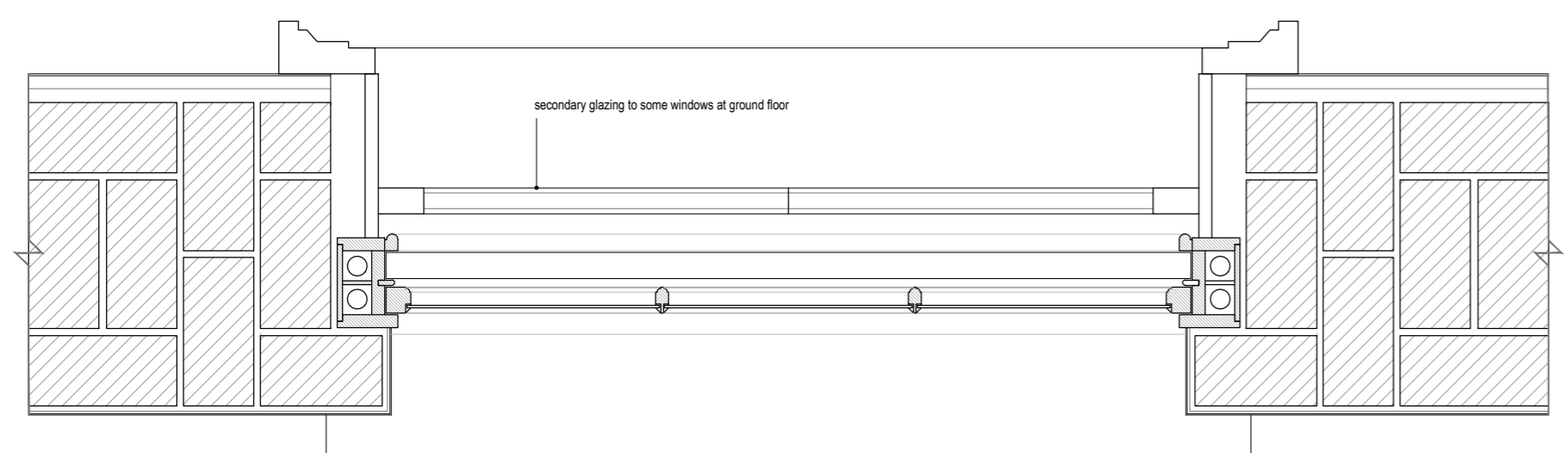
Typical proposed secondary glazing - ground, second & third floors



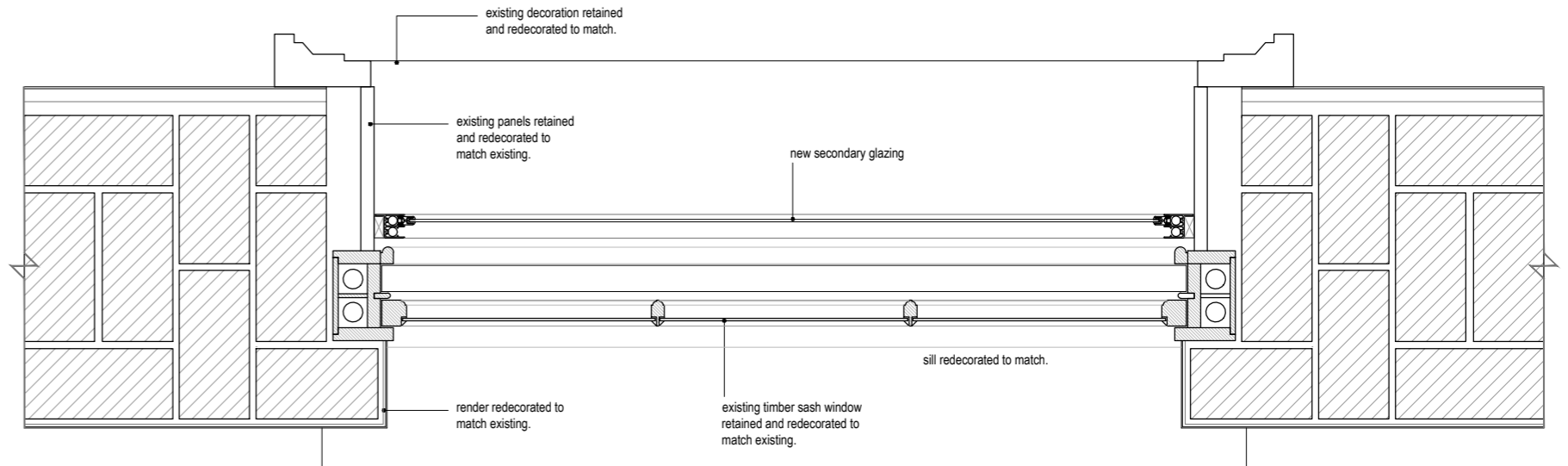
Typical Elevation
1:20



Typical Section - Selectagaze slimline 20 details
1:10

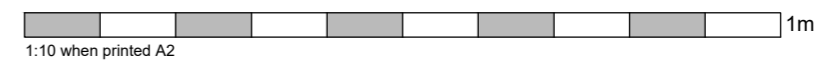


Typical Plan
1:10



Typical Plan
Selectagaze slimline 20 details
1:10

<p>Unit 126, The Light bulb, 1 Filament Walk, SW18 4GQ 0203 142 7472 www.atelieradb.com</p>	Project:	Zetter Hotel 2-7 Montague Street, WC1B 5BP					Rev: Date: By: Description:				
	Drawing Title:	Proposed Secondary Glazing Details - Ground, Second and Third Floors									
	Drawing No:	10202A32001	Rev:	-	Scale:	1:10/20	Date:	07.03.2023	Drawn:	gd	Status:



All dimensions shown should be checked on site and discrepancies reported to the Architect prior to construction. Do not scale from this drawing. Designs are not coordinated with engineer projects. Copyright Atelierdb.