



Condition Discharge

Johnson
Terraces

ARAX PROPERTIES

5 St Cross Street

Johnson Building

Application Ref : 2021/4246/P Condition 5



Planting Proposal

For the suitability of the plants for the site we have identified the following site conditions: shaded conditions and more defended from the wind.

Festuca (Blue Fescue)



Festuca is a low-lying ornamental grass that is low maintenance and adds a very nice dynamic texture and unique colour to the planter bed. This plant was selected for both patios as it is wind tolerant, has a light range of sun to full sun, it is an evergreen perennial, meaning it will be green throughout the year (will bloom in the early summer) and will only need to be replaced every 3-5 years, and is drought tolerant and it thrives in a confined environment (ie a planter box as opposed to an open garden).

Liriope



Liriope is a tough and hardy evergreen perennial that blooms purple or pink flowers in autumn. When not in bloom the plant appear to look like grasses which aligns with the aesthetic of the planting plan, but when they're in bloom the flowers will be a nice seasonal addition. This plant was selected for the partially shaded areas on the two patios. It is a drought tolerant plant which will be suitable for the summer. These plants are also well suited for containers.

For the suitability of the plants for the site we have identified the following site conditions: shaded conditions and more defended from the wind.

Black mondo grass



Black Mondo grass is a unique perennial due to its dark purple almost black shade. It was selected for its colour to add a dynamic pop to the Boho Chic theme. It is a suitable plant for the shaded areas particularly on the lower patio as that is more shaded. They are suitable for containers, however, grow slower in containers which can be beneficial for maintain a desired aesthetic and balance with the other plants. Black Mondo grass is also drought tolerant once established which will be good for the summer months.

Purple Moor Grass



Purple Moor Grass is a deciduous perennial that gives a very tall and fine stem which is perfect for adding height to the planter. It will bloom in late summer, early autumn. It is suitable for both patios as it is a full sun to partial shaded plant and is tolerant to wind conditions. It is tolerant to containers.

For the suitability of the plants for the site we have identified the following site conditions: shaded conditions and more defended from the wind.

Feathered Reed grass



Feathered reed grass was selected due to common looks to hair grass. It is a tidy and upright perennial that does not flop through the season. Feathered reed grass was selected as it thrives in containers, is wind and drought tolerant and is suitable for both patios as it can be in the full sun or partial shade.

Pineleaf Penstemon



The pineleaf penstemon is an evergreen dwarf plant that blooms in late spring throughout the summer. It was selected due to its bold coloured flowers and overall appearance that compliment the grasses. It is suitable as it is suitable in full sun conditions and is drought tolerant once established. This plant thrives in containers and they have a thick stem so are suitable for windy conditions.

For the suitability of the plants for the site we have identified the following site conditions: shaded conditions and more defended from the wind.

Phormium Tenax



Phormium Tenax is a hardy ornamental evergreen grass. It is suitable for exposed or sheltered conditions and can be positioned in full sun or partial shaded environments making it ideal for both patios. This plant comes in a variety of colours which makes it ideal to use in several different areas in the patio. This plant thrives in containers and is drought tolerant which is ideal for the summer.

Trachycarpus Fortunai



Trachycarpus Fortunai is an evergreen palm with a thick trunk making it hardy for windier conditions however it will be best used on the lower patio only so it can receive some shelter from colder winds in the winter. It thrives in containers which is ideal for a patio and is great in full sun or partial shaded areas.



Trachycarpus, varigated Phormium
Tenax, Pineleaf Penstenom:



Trachycarpus, Black Mondo, Blue
Fescue and purple Phormium
Tenax:



Blue Fescue, Feathered
Reed Grass, Purple Moor
Grass:



Liriope, Black Mondo,
purple and varigated
Phormium Tenax:



Supplementary Planting Scheme



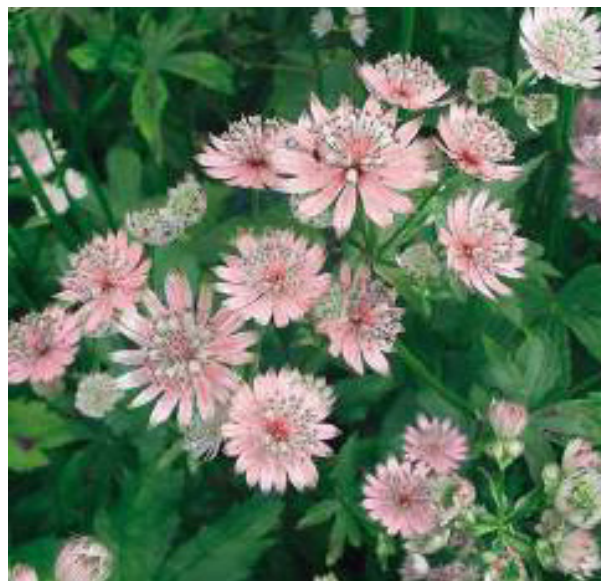
All the plants selected for this scheme are pollinators which is a significant reason for why we selected each of them. In addition, we did decide to proceed with a more flowering and colourful scheme compared to the first stage which was primarily grasses based. Please see reasoning for each individual plant here

Achillea 'Moonshine'



This plant was selected as it is very tolerant to many different growing conditions. It performs well in most soil and exposures and prefers sunny or shady locations. This plant creates a very interesting texture in the garden as it forms flat looking clusters which will provide some depth to the planting scheme. Furthermore, this plant is also very low maintenance and grows well around other plants.

Astrantia major 'Rosa'



Another low maintenance plant, the Astrantia major is herbaceous perennial and was selected as it features a very long blooming period and can have flowers from late spring up until fall in the best occasions – this is ideal as it extends the plant's capability as a pollinator plant. It grows well in containers and pots and can be in a variety of sun conditions from full sun to dappled shade which makes it a great and flexible plant for our scheme. These plants thrive around competition which is ideal for the presented planting scheme.

additional planting to be installed

Supplementary Planting Scheme



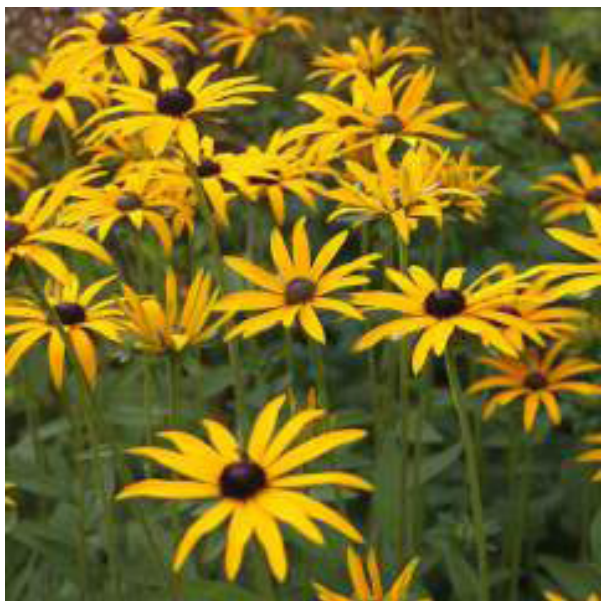
All the plants selected for this scheme are pollinators which is a significant reason for why we selected each of them. In addition, we did decide to proceed with a more flowering and colourful scheme compared to the first stage which was primarily grasses based. Please see reasoning for each individual plant here

Salvia Viridis



Low maintenance plant that can be either an annual, biannual or perennial. It is ideal for flower beds and is great in dense planting schemes where they might be situated under other plants – which will likely be the case in this dynamic scheme, making this plant ideal. It is generally trouble free when it comes to pests and is good in sheltered or exposed environments which is great for the roof top. They prefer full sun conditions, so we need to keep that in mind when placing.

Rudbeckia fulgida var.



This perennial blooms in mid to late summer and lasts into the fall providing a splash of colour later in the growing season, which again adds to the seasonality of the scheme, and prolongs the effectiveness of using these plants as pollinators. This plant can be planted in either shaded or exposed conditions, in full or partial sun, making it very flexible to use around the scheme. This plant is drought tolerant which is ideal for dryer summers and thrives in planter boxes and containers.

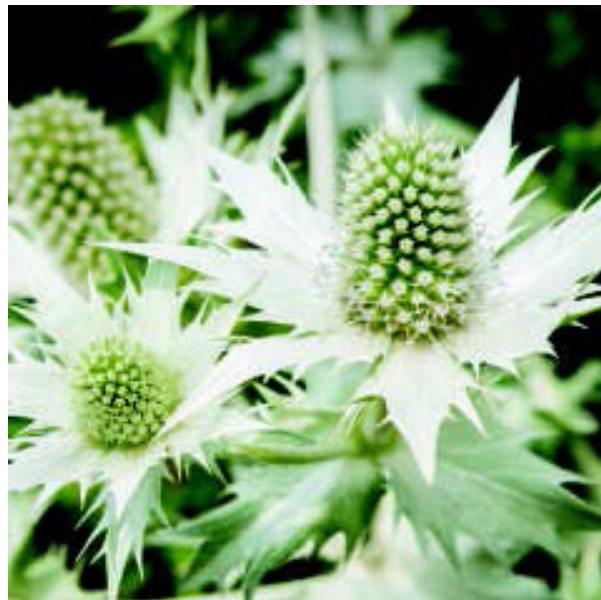
additional planting to be installed

Supplementary Planting Scheme



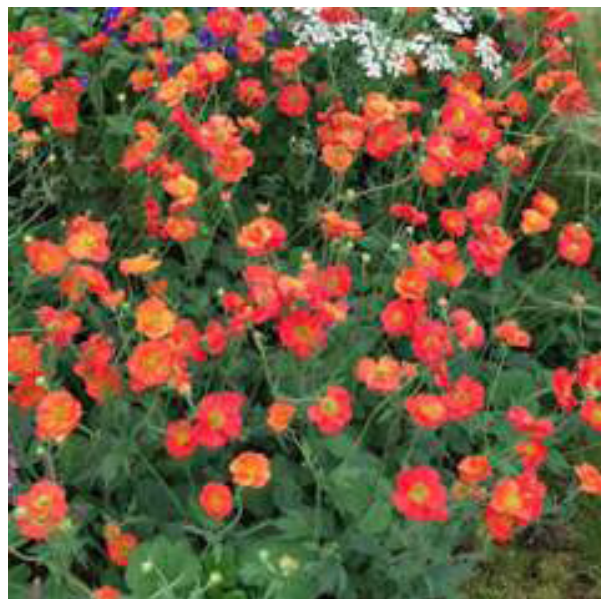
All the plants selected for this scheme are pollinators which is a significant reason for why we selected each of them. In addition, we did decide to proceed with a more flowering and colourful scheme compared to the first stage which was primarily grasses based. Please see reasoning for each individual plant here

Eryngium giganteum



This perennial was selected due to its tolerance in exposed conditions. This plant will be utilized in more exposed parts of the patio because it also prefers full sun conditions. Another unique part of this plant is that the flower heads remain on the plants over winter and thus provide an interest to planters in the winter, which provides a sense of seasonality to the planting.

Geum Scarlet Tempest

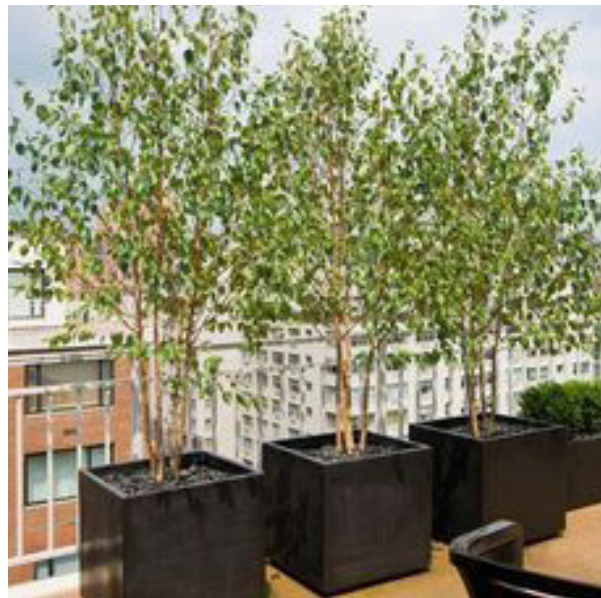


This plant is great as it brings the red back in from the first scheme, again unifying the two phases. In addition, this plant flowers twice, once in the early spring and again in the late summer into fall, increasing its benefits as a pollinator and serving as an interesting feature in the garden. This plant is a low maintenance perennial which can be planted in sunny to shady environments.

additional planting to be installed

All the plants selected for this scheme are pollinators which is a significant reason for why we selected each of them. In addition, we did decide to proceed with a more flowering and colourful scheme compared to the first stage which was primarily grasses based. Please see reasoning for each individual plant here

Pleached Silver Birch *Betula Utilis Jacquemontii*



Betula Utilis Jacquemontii, or as it is better known as, Silver Birch, is popular for its stark white bark and good autumn colour. In fact, this deciduous tree is one of the most sought-after birch varieties precisely for the dramatic display it creates in the landscape and year-round interest it offers.

Silver birch received the prestigious Award of Garden Merit by the Royal Horticultural Society for its exceptional qualities including famed resilience. This is a tree native to the Himalayas, so its no surprise that it is fully hardy in the United Kingdom and able to withstand extreme winter temperatures.

Nepeta 'Florina'



Nepeta 'florina' is an aromatic perennial that is very drought resistant and can be grown in shady or sunny conditions. It is an ideal plant for containers and enjoys being planted under larger shrubs. It grows well in mixed gardens which fits well with this scheme and can grow in sunny or shady, sheltered, or exposed conditions.

Planting Scheme - Planters



To fit a tree of this size we want a planter at least 70cm in diameter. The orb is slightly larger as the opening is smaller and must be taken into consideration (therefore have an overall larger diameter). Both planters are bulky and sturdy enough to hold the **larger 2-3m trachycarpus tree**. All planters within the design scope are to be flexible and can be moved if necessary.



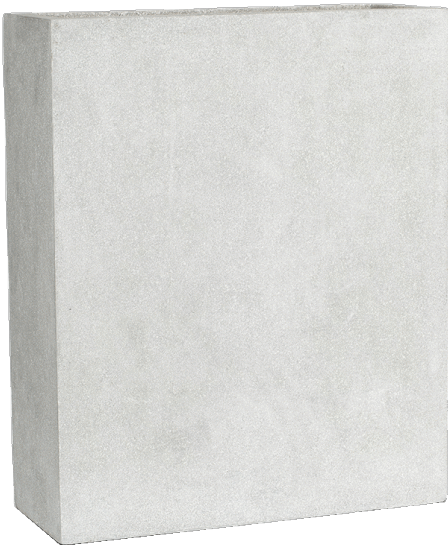
Type 1



750mm(dia) x
600mm(H)

Type 3

1000mm(L) x
400mm(w) x
900mm(h)



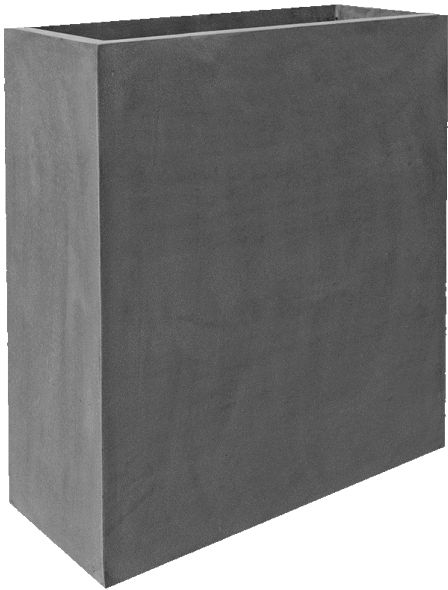
Type 2



870mm(dia) x
750mm(H)

Type 4

720mm(L) x
300mm(w) x
760mm(h)



For the longer troughs, we will need to piece together multiple individual planters, to achieve the intended length. See below two more streamlined planters of the same brand of those above to ensure a consistent material, look and feel. In addition, we have included a natural wooden planter as a feature planter which may be a nice addition used in only one or two moments around the space to compliment the other wooden accents on the patios. All troughs within the design scope are to be flexible and can be moved if necessary.

Type 5

720mm(L) x
300mm(w) x
760mm(h)



Additional plant pots selected to complement the initial planting scheme

Type 6

650mm(dia) x
700mm(H)

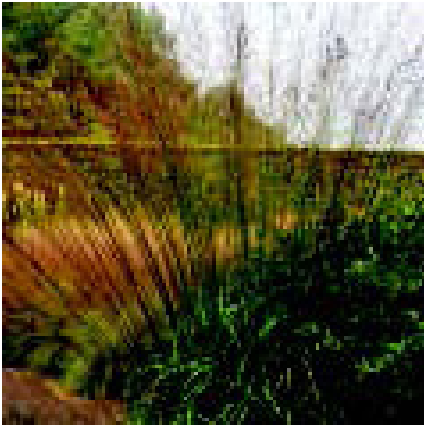


Type 7

700mm(dia) x
720mm(H)



Complete Planting Scheme - Mood Board



mixed planter / planting look & feel reference image



Overall look & feel for initial planting scheme, complemented by the supplementary planting scheme now proposed.



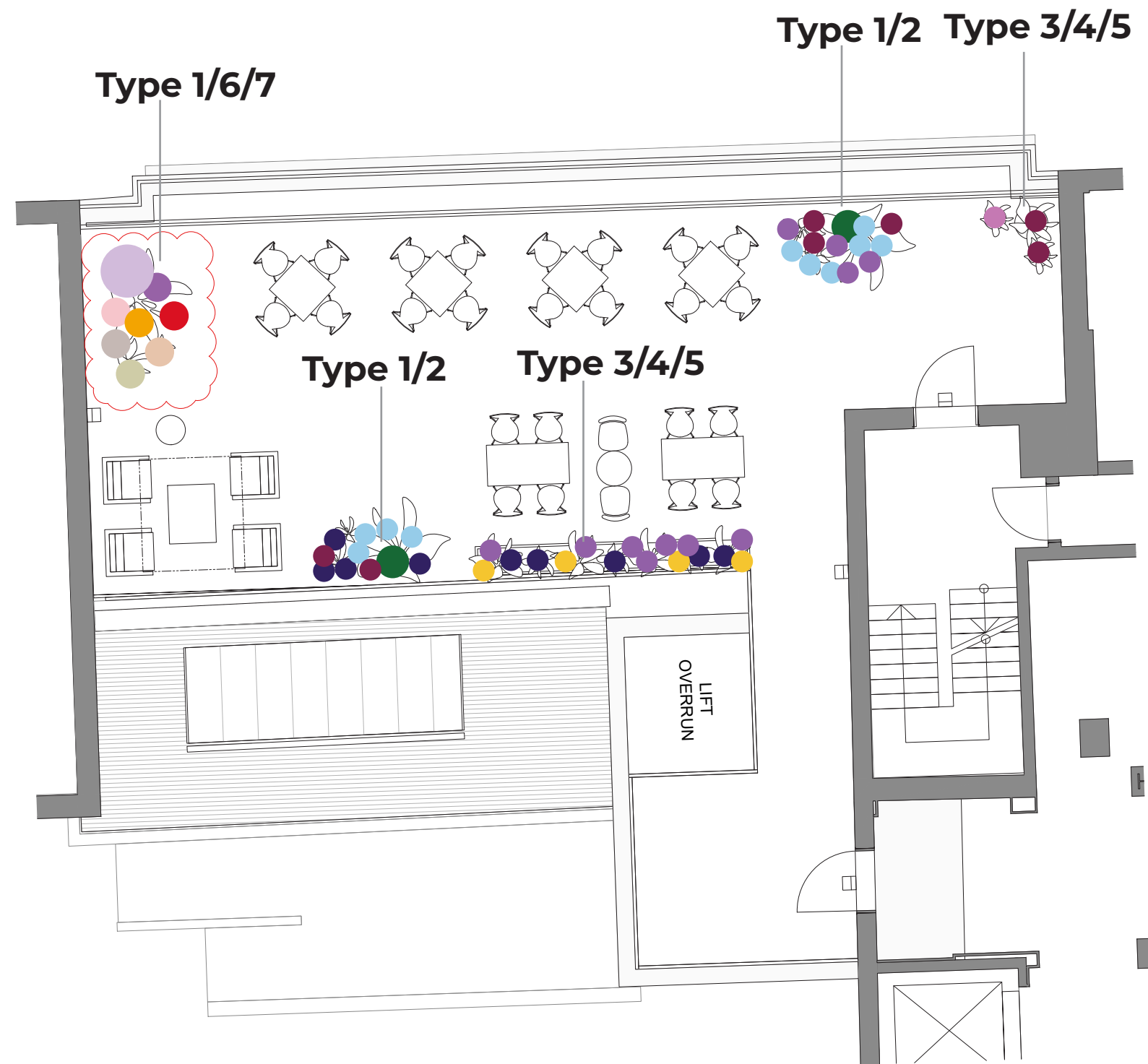
Planting Scheme - 5 St. Cross Street



KEY (original specification)

- Trachycarpus Fortunai
- Black Mondo
- Blue Fescue
- Feathered Reed Grass
- Liriope
- Phormium Tenax
- Purple Moor Grass
- Pineleaf Penstemon

additional planting to be installed clouded on plan



KEY (supplementary specification)

- Salvia Viridis
- Astrantia major 'Rosa Lee'
- Eryngium giganteum
- Rudbeckia fulgida var.
- Silver Birch
- Geum Scarlet Tempest
- Nepeta 'Florina'
- Calamagrostis x acutiflora

